



1998

ADVENTURER®



1998 ADVENTURER

Our new Adventurer widebody slideouts haven't stopped growing since we introduced them.

For the second year running, our Adventurer slideouts are leading the pack as our best sellers. And as usual, we've added enough exciting features to impress any motor home enthusiast. Several of this year's floorplans come with the exclusive StoreMore™ Slideout System, offering an expansive storage compartment, nearly 12 feet in length, that slides out with the room extension for easier access without having to sacrifice storage space. There are also a wealth of floorplan options, and every model is a widebody basement design. Besides offering plenty of space, the Adventurer boasts convenience-minded benefits like an available driver's door, one-piece fiberglass roof with ducted air conditioning, and belt-line exterior compartment doors with single handle paddle latches for easy opening. You'll also appreciate the available Mobile Theater Sound System. From end to end, the Adventurer epitomizes comfort.



35WP This generous lounge/dinette slideout looks even larger thanks to the airy, contemporary feel of its White Granite cabinetry. The free-standing coffee table can be stored under the couch to add space when traveling or entertaining guests.



32WQ This lounge area features an available overhead entertainment center. A fold-up table behind the passenger's chair offers a comfortable setting for a game of chess (if you can keep your opponent from napping in their recliner).



30WQ This available extendible table with a self-storing leaf features two swiveling chairs and roomy overhead storage compartments.



34WA This inviting side aisle floorplan offers a two-door bath that can be accessed from the aisle of the coach or the bedroom. After a day of driving, swiveling captain's and passenger's chairs lend themselves to visiting with friends.



35WP The pleasant White Granite cabinetry in this bedroom brightens up the space. A throw pillow and coordinated window treatments add a touch of class. Spacious cabinets above the bed and storage under the bed offer seemingly endless storage space, while handy shirt closets on either side of the bed keep clothes nice and neat.



34WA An in-line galley puts every kitchen item within easy reach. Dual sink covers add valuable counter space, and generously sized cabinets offer plenty of room for storage.



35WP The roomy bathroom offers ample cabinet space, a lit vanity and a bright, frosty white skylight to let natural light into the shower area.



35WP The impressive **STOREMORE** Slideout System on most of our Adventurer slideouts gives you extra living space without sacrificing storage space. The compartments are generously sized, well-lit, and move with the room itself, offering easy access to stored gear.

1998 ADVENTURER SPECIFICATIONS

1998 ADVENTURER	30WQ	32WQ	33WQ □	34WA	34WQ-P	35WP	37WW
Length	30'9"	32'4"	33'6"	34'10"	34'3"	35'	37'7"
Exterior Height w/AC - Chevrolet/Ford/Freightliner*	11'8"/11'9"/NA	11'9"/11'9"/NA	NA/11'8"/NA	11'9"/11'9"/NA	NA/NA/11'9"	11'9"/11'8"/NA	NA/11'7"/NA
Exterior Width ^Δ	8'5.5"	8'5.5"	8'5.5"	8'5.5"	8'5.5"	8'5.5"	8'5.5"
Interior Height	6'8"	6'8"	6'8"	6'8"	6'8"	6'8"	6'8"
Interior Width	8'5"	8'5"	8'5"	8'5"	8'5"	8'5"	8'5"
Exterior Storage	124.5 cu. ft.	137 cu. ft.	107 cu. ft.	162 cu. ft.	103.6 cu. ft.	137.4 cu. ft.	132.7 cu. ft.
Fuel Capacity (gal.) - Chevrolet/Ford/Freightliner	75/75/NA	75/75/NA	NA/75/NA	75/75/NA	NA/NA/90	75/75/NA	NA/75/NA
Fresh Water Capacity w/Heater	85 gal.	85 gal.	76 gal.	85 gal.	92 gal.	69 gal.	69 gal.
Holding Tank Capacity - Black/Gray	55/56 gal.	49/50 gal.	55/53 gal.	57/50 gal.	40/53 gal.	40/50 gal.	55/50 gal.
LP Capacity [∅]	28 gal.	28 gal.	28 gal.	28 gal.	39 gal.	28 gal.	28 gal.
GVWR - Chevrolet	16,500 lbs.	16,500 lbs.	NA	16,500 lbs.	NA	16,500 lbs.	NA
GVWR - Ford	17,000 lbs.	17,000 lbs.	17,000 lbs.	17,000 lbs.	NA	17,000 lbs.	20,000 lbs.
GVWR - Freightliner	NA	NA	NA	NA	20,700 lbs.	NA	NA
Wheelbase	190"	208"	216"	228"	228"	216"	228" + Tag

S Standard
O Optional

AUTOMOTIVE

	30WQ	32WQ	33WQ	34WA	34WQ-P	35WP	37WW
Chassis - Chevrolet 7.4L Vortec V-8 @ 290-HP, 124-amp. alternator, anti-lock brake system	S	S		S		S	
Chassis - Ford 7.5L V-8 @ 245-HP, 130-amp. alternator	O	O	S	O		O	S
Chassis - Freightliner Cummins B5.9L turbo diesel @ 230-HP, engine block heater, exhaust brake ready, 100-amp. alternator, Allison MD3060 6-speed transmission, air brakes					S		
Front shocks*/steering stabilizer package - Chevrolet only	O	O		O		O	
Suspension (air) - tag axle							S
Tires (radial) - w/spare	S	S	S	S	S	S	S

DRIVER CONVENIENCES

	30WQ	32WQ	33WQ	34WA	34WQ-P	35WP	37WW
3-point retracting seat belts w/4-position adjustable D-loop (drv./frt. pass.) - seats w/reclining high-back design, hinged armrests, lumbar support, swivel/slide pedestal, lap belts in selected areas	S	S	S	S	S	S	S
12-V electrical supply/lighter	S	S	S	S	S	S	S
Battery charge control - dual, automatic	S	S	S	S	S	S	S
Battery charger (solar) - wiring prep	S	S	S	S	S	S	S
Battery charger (solar) - 10-watt	O	O	O	O	O	O	O
Battery disconnect - auxiliary	S	S	S	S	S	S	S
Cabinet - center console					S		
Carpeted floor mats, map pocket(s)	S	S	S	S	S	S	S
Convenience tray	S	S	S	S		S	S
Cruise control, start circuit - auxiliary	S	S	S	S	S	S	S
Curtain w/track - front wrap-around	S	S	S	S	S	S	S
Defroster* - fans, aux. 2-speed	O	O	O	O	O	O	O
Driver's door	O	O	O	O	O	O	O
Fog lamps	O	O	O	O	O	O	O
Heating/air conditioning	S	S	S	S	S	S	S
Hood release - exterior key locks	S	S	S	S	S	S	S
Leather seats - driver & passenger, leather insert w/vinyl surround	O	O	O	O	O	O	O
Map light, sunvisors	S	S	S	S	S	S	S
Mirrors (rear view) - exterior, low mounted, includes convex element	S	S	S	S	S	S	S
Mirrors (rear view) - exterior, low mounted, electric w/remote & defrost	O	O	O	O	O	O	O
Rear view monitor system - cable ready	S	S	S	S	S	S	S
Rear view monitor system - video/one-way audio	O	O	O	O	O	O	O
Service light - driver's side, exterior	S	S	S	S	S	S	S
Steering - power assisted w/tilt wheel	S	S	S	S	S	S	S

S Standard
O Optional

	30WQ	32WQ	33WQ	34WA	34WQ-P	35WP	37WW
Storage cabinet - (front & side overheads)	S	S	S	S	S	S	S
Window shades (2) - roller, light filtering	S	S	S	S	S	S	S
Windows (driver/passenger) - sliding, w/screens	S	S	S	S	S	S	S
Windshield wipers (intermittent)	S	S	S	S	S	S	S
Work station - pull-out, pass. side, dash	O	O	O	O	O	O	O
ENTERTAINMENT							
Antenna (radio) - roof-mounted, flex. rubber	S	S	S	S	S	S	S
C.B. prep kit* - antenna, coax wiring, 12-V power connection	O	O	O	O	O	O	O
Entertainment center (patio)* - DC receptacle, 110-V outlet, TV jack, radio antenna, AM/FM radio w/cassette or CD player, speakers (2), table, locking door,	O	O	O	O	O	O	O
Inverter* - 110-V for TV/VCR, 130-watt	O	O	O	O	O	O	O
Satellite system pre-wiring - roof	S	S	S	S	S	S	S
Satellite system - digital [∅]	O	O	O	O	O	O	O
Sound system - deluxe, amplifier, 6 speakers	O	O	O	O	O	O	O
Stereo power switch - main or aux. battery	S	S	S	S	S	S	S
Stereo (cab) - AM/FM/cassette w/speakers (4)	S	S	S	S	S	S	S
Stereo w/CD player (cab) - AM/FM w/speakers (4)	O	O	O	O	O	O	O
TV* (13" color) w/remote - located in bedroom	O	O	O	O	O	O	O
TV, front (19" color) w/remote - switching system	O	O	O	O	O	O	O
TV, front (19" color) & VCR w/remotes - switching system, cabinet exchange	O	O	O	O	O	O	O
TV enhancement package - antenna (amplified), DC receptacles (2), interior jacks (2), coax wiring, cable input, TV shelf or stand	S	S	S	S	S	S	S
SLIDEOUT							
Slideout room (driver's side)* - switch located on instrument panel, cover			S		S	O	S
Overhead cabinets* - mirror & wainscoting w/chair rail					S	O	S
INTERIOR							
Cabinets - wood doors	S	S	S	S	S	S	S
Carpeting w/pad - stain resistant	S	S	S	S	S	S	S
Ceiling lights, courtesy lights (2)	S	S	S	S	S	S	S
Ceiling vent* - non-powered, lounge, galley, bedroom	S	S	S	S	S	S	S
Ceiling vent - powered, bathroom	S	S	S	S	S	S	S
Ceiling vent - powered ventilator fan, galley (lounge 30WQ)	O	O	O	O	O	O	O
Clock - decorator style	S	S	S	S	S	S	S
Coffee table* - (avail. only w/slideout on 35WP)					S	O	S
Color themes (interior) - choice of Madison (blue), Mink (taupe), Picasso (neutral), Silversage (green)	S	S	S	S	S	S	S

S Standard
O Optional

	30WQ	32WQ	33WQ	34WA	34WQ-P	35WP	37WW
Day/nighter pleated blinds - lounge; dining & bedroom	O	O	O	O	O	O	O
Lamp(s)* - decorator style, in lounge		S	S	S			
Picture* - framed		S				S	
Throw pillows (2)	S	S	S	S	S	S	S
Wardrobe - mirrored door(s), carpeted floor, drawers* (NA on 32WQ, 33WQ, 35WP), light, clothes rod, shelf (NA on 34WQ-P)	S	S	S	S	S	S	S
Washer/dryer combination*							O
Windows - tinted	S	S	S	S	S	S	S
Windows* - dual glazed, thermo-insulated	O	O	O	O	O	O	O
GALLEY							
Coffee maker*	O	O	O	O	O	O	O
Decorative light - dinette					S	S	S
Flip-up countertop extension	S						
Flooring (vinyl)	S	S	S	S	S	S	S
Galley rail	S	S					
Hutch				S			
Microwave/convection oven - touch control	O	O	O	O	O	O	O
Microwave oven - touch control	S	S	S	S	S	S	S
Pantry - slideout w/adjustable shelves, locking	S		S		S	S	S
Range hood - powered vent, fan switch, generator hourmeter gauge, light & switch	S	O	S	S	S	S	S
Range top - 3-burners w/storage drawers below, range cover	O	O	O	O	O	O	O
Range w/large glass-doored oven - 3-burners, range cover	S	S	S	S	S	S	S
Refrig./freezer - large, double-door	S	S	S	S	S	S	S
Refrig./freezer - large, double-door w/icemaker			O	O	O	O	O
Refrig./freezer* - side-by-side w/icemaker			O		O	O	O
Sink (double) - stainless steel, recessed w/countertop covers, single control faucet	S	S	S	S	S	S	S
Spice rack			S				
Storage drawers - below dinette seats	S	S	S	S	S	S	S
Table & chairs (4)*	O	O	O	O	O	O	O
Water purification system	O	O	O	O	O	O	O
BEDROOM							
Bedsread(s), pillows, pillow shams, throw pillow(s)	S	S	S	S	S	S	S
Hamper*							S
Headboard* - padded fabric					S		
Lamp(s) - decorator style, wall-mounted	S	S	S	S	S	S	S
Mattress(es) - innerspring w/non-slip mat, access to storage below, gas springs	S	S	S	S	S	S	S
Mirror					S		
BATHROOM							
Flooring (vinyl)	S	S	S	S	S	S	S
Hamper		S			S	S	
Lavatory cabinet	S	S	S	S	S	S	S
Linen cabinet	S	S	S		S	S	S
Magazine rack	S	S					S
Makeup lights (3) - 2 sets on 37WW	S			S			S
Makeup lights (4)		S	S		S	S	
Medicine cabinet - mirrored door				S			
Medicine cabinet - wooden doors	S	S	S		S	S	S
Mirror - wall-mounted	S	S	S		S	S	S
Shower/tub - shower head	S	S	S	S	S	S	S
Shower door - pleated (glass on 37WW)	S	S	S	S	S	S	S
Sink - oval, w/ledge back	S	S	S	S	S	S	S
Skylight & shower light	S	S	S	S	S	S	S
Tissue holder	S	S	S	S	S	S	S
Toilet w/sprayer & foot pedal - porcelain	S	S	S	S	S	S	S
Towel bar(s)	S	S	S		S	S	S
Towel rack - 3 rods, built into bath door	S	S	S	S	S	S	
Towel ring(s)		S	S	S	S		
EXTERIOR							
Awning rail	S	S	S	S	S	S	S

□ Available December 1997. * Not all options available in combination. See dealer for details. NA Not Available.

• The height of each model is based on the curb weight of a typically equipped unit on the standard chassis. The actual height of your vehicle may vary by as much as 2" depending on chassis or equipment variations.

△ The Adventurer floorplans feature a widebody design - over 96" In making your purchase decision, you should be aware that some states restrict access on some or all state roads to 96" in body width. Before making your purchase decision, you should confirm the road usage laws in the states of interest to you.

◇ Capacities shown are tank manufacturer's listed water capacity (W.C.). Actual filled LP capacity is 80% of listing due to safety shut-off required on tank.

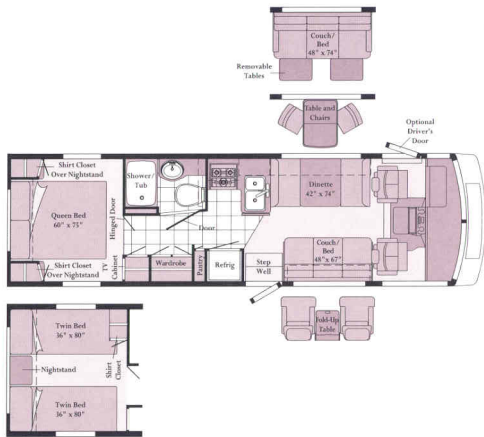
∞ TV satellite system options do not include programming activation or receiver. Quality reception is only available in the lower 48 States.

Winnebago Industries' continuing program of product improvement makes specifications, equipment, model availability and prices subject to change without notice. Comparisons to other motor homes are based on the most recent information available.

S Standard
O Optional

	30WQ	32WQ	33WQ	34WA	34WQ-P	35WP	37WW
Awning* patio	O	O	O	O	O	O	O
Bumpers - rustproof, front: steel reinforced, rear: formed aluminum	S	S	S	S	S	S	S
Entrance door w/screen door - latch & deadbolt locks, electric steps	S	S	S	S	S	S	S
Holding tanks (heated compartment)	S	S	S	S	S	S	S
Ladder/mud flaps - rear	S	S	S	S	S	S	S
Outlet - 110-V, curbside	S	S	S	S	S	S	S
Porch light - w/interior switch	S	S	S	S	S	S	S
Sewer hose & storage compartment	S	S	S	S	S	S	S
Storage compartments - heated rear storage compartment (NA 34WA), locks, gas struts, single paddle latch, lights	S	S	S	S	S	S	S
Tire tools - wrench, leverage bar, hoist rod	S	S	S	S	S	S	S
Trailer towing package w/Class II hitch	S	S	S	S	S	S	S
Trailer wiring extension	S	S	S	S	S	S	S
Trunk* - access to underbed storage (NA w/twin bed option)	S	S	S			S	
Undercoating*	O	O		O	O	O	
Wash station - water pump switch	S	S	S	S	S	S	S
Water fill door - lockable, water tank drain	S	S	S	S	S	S	S
Wheel covers	S	S	S	S	S	S	S
Wheel liners - stainless steel	O	O	O	O	S	O	O
SYSTEMS							
30-amp. power cord	S	S	S	S	S	S	S
50-amp. power cord*		O	O	O	O	O	O
Air conditioning pre-wiring - roof	S	S	S	S	S	S	S
Air-conditioner - roof, 14,800-BTU	O						
Air-conditioners - roof, front/rear: 13,500/13,500-BTU		O	O	O	O	O	O
Automatic changeover switch - shoreline/generator	S	S	S	S	S	S	S
Batteries (2) - deep cycle RV	S	S	S	S	S	S	S
City water hook-up	S	S	S	S	S	S	S
Electrical control center - 110-V AC/12-V DC, 15-amp. battery charger, 45-amp. conv., DC automotive fuses, ac circuit breakers	S						
Electrical distribution system - breaker panels, 45-amp. converter/charger		S	S	S	S	S	S
Furnace - ducted in floor, 35,000-BTU	S	S					
Furnace - ducted in floor, 40,000-BTU			S	S	S	S	S
Generator prep kit - fuel line (NA 34WQ-P), 12-V wiring	S	S	S	S	S	S	S
Generator* - 4,000-watt, gas	O						
Generator* - 5,000 or 6,500-watt, gas		O	O	O		O	O
Generator* - 6,500-watt LP or 7,500-watt diesel					O		
Hydraulic leveling jacks* - front & rear	O	O	S	O	S	O	S
LP tank - permanent mount w/gauge	S	S	S	S	S	S	S
Monitor panel - water, holding & LP tank levels, battery condition gauge, water heater ignition switch w/pilot indicator light, water pump switch, located in galley	S	S	S	S	S	S	S
Water heater - 6-gal., electronic ignition			S		S		
Water heater (motoraid) & rear auto. heater	S	S		S		S	S
Rear automotive heater			S				
Water heater winterization by-pass valve	S	S	S	S	S	S	S
Water pump (demand) - accumulator tank	S	S	S	S	S	S	S
Water system winterizing valve	S	S	S	S	S	S	S
SAFETY							
3-point retracting seat belts (drv./frt. pass.)	S	S	S	S	S	S	S
Assist handle* - interior & exterior	S	S	S	S	S	S	S
Assist strap - interior	S	S	S	S	S	S	S
Carbon monoxide detector/alarm	S	S	S	S	S	S	S
Fire extinguisher (10-B.C.)	S	S	S	S	S	S	S
Ground fault interrupter	S	S	S	S	S	S	S
High mount brake light	S	S	S	S	S	S	S
Lap belts - in selected areas	S	S	S	S	S	S	S
LP leak detector/smoke detector/alarm	S	S	S	S	S	S	S
Windshield - laminated safety glass mounted in steel, window escape	S	S	S	S	S	S	S

OUR POPULAR ADVENTURER MODEL FEATURES A VARIETY OF FLOORPLANS



30WQ

- New floorplan for 1998.
- Widebody basement design.
- L-shaped galley.
- Queen or twin bed option.
- Numerous floorplan options.



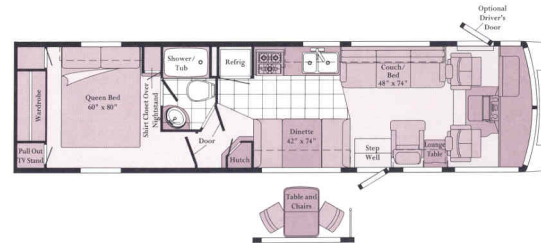
32WQ

- Widebody basement design.
- Queen or twin bed option.
- Numerous floorplan options.



33WQ

- New floorplan for 1998. (Available December 1997.)
- Lounge/galley slideout model.
- StoreMore™ Slideout System.
- Widebody basement design.
- Spacious split bath area.



34WA

- Widebody basement design.
- Large rear wardrobe.
- Spacious private bedroom.
- Side aisle floorplan.



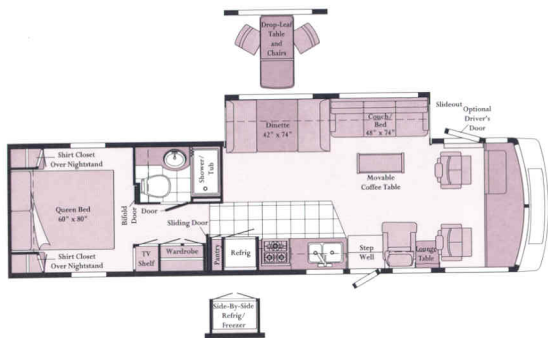
Our high standards

made us one of the first motor home manufacturers to earn the title "Qualified Vehicle Modifier," identifying us as a leader among companies who build on Ford chassis.



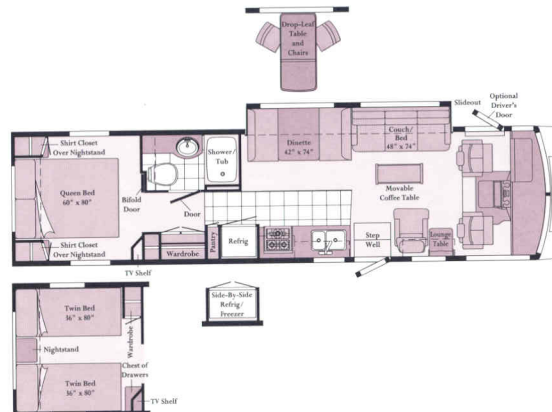
Standard Vinyl Flooring

TAILORED TO FIT YOUR LIFESTYLE.



34WQ-P

- Diesel pusher.
- Widebody basement design.
- Lounge/dinette slideout model.
- Numerous floorplan options.



35WP with slideout.

- New floorplan for 1998.
- Widebody basement design.
- Available lounge/dinette slideout.
- StoreMore™ Slideout System.



35WP

- New floorplan for 1998.
- Widebody basement design.
- Queen or twin bed option.
- Numerous floorplan options.



37WW

- Widebody basement design.
- Lounge/dinette slideout model.
- StoreMore™ Slideout System.
- Spacious bath with large wardrobe.

Widebody designs are over 96" wide. Some states restrict access on some or all state roads to 96." You should confirm the road usage laws in the states of interest to you.
 Note: Dimensions shown are for sleeping space only, and dashed lines denote overhead storage areas.

ADVENTURER INTERIORS

Mink
with Waterford Oak



Madison
with White Granite



Every motor home interior is stitched, constructed, sanded and stained with care in our factory by our own employees. We even perform extensive wear tests to ensure long-lasting durability. This concept is called Home Comfort Design, and it gives us complete control over the fit and finish of the final product. We take great pride in offering you high-quality, handcrafted living spaces to match your lifestyle.

Picasso
with White Granite



Silversage
with Waterford Oak



All interior decor choices are available with either Waterford Oak or White Granite cabinetry.

EXTERIOR VALANCE PANELS



Champagne

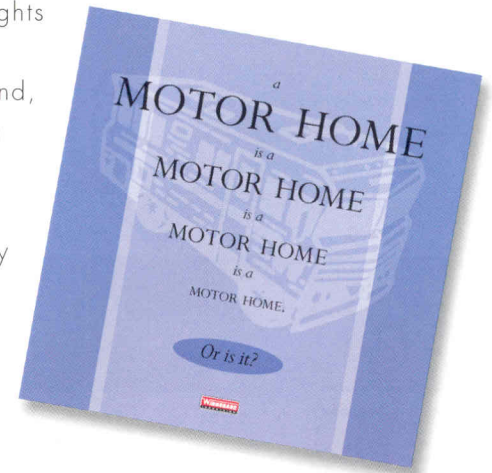


Wintergreen

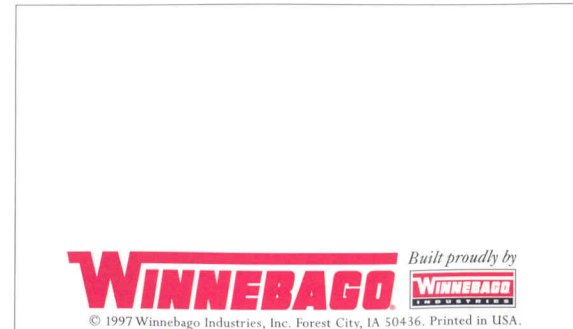
This year's exterior lower body panels are Champagne, suggested with Mink and Madison interiors; and Wintergreen, suggested with Picasso and Silversage. However, you are free to order either exterior color, regardless of your interior choice.

Ask for the new Winnebago Industries buyer's guide and discover why all motor homes are not created equal.

The process of buying a motor home can be intimidating, even if you're a veteran. And in a market saturated with flashy first impressions, the true signs of quality are often hard to spot. So this year we put together a user-friendly guide to help you make some educated observations as you compare Winnebago Industries motor homes to the competition. It explains our uniquely superior on-site manufacturing processes, highlights the importance of meeting (and exceeding) industry standards and, best of all, it's free. Use it as a reference tool when shopping around, or familiarize yourself with some key safety and quality considerations. Ask for the guide next time you visit your Winnebago Industries dealer, and upgrade your motor home buying savvy.



Visit us at www.winnebagoind.com



Seat belts are your most important hookup. Always buckle up.