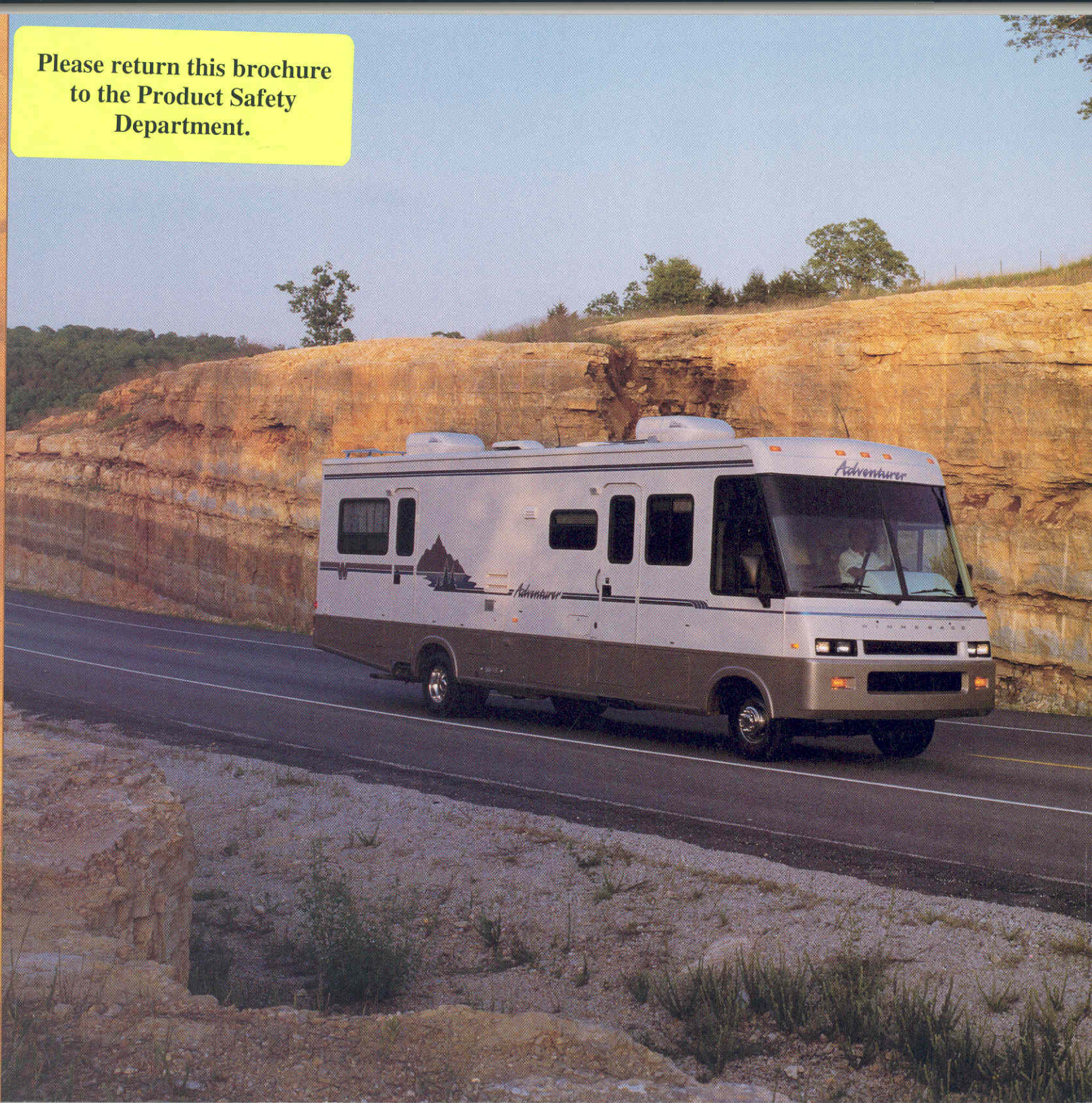


Adventurer

WINNEBAGO®

Please return this brochure
to the Product Safety
Department.



The Only Thing Left Behind Is The Competition.

The 1993 Adventurer® pulls way ahead of the competition when it comes to the things that make basement motor homes such a pleasure.

For starters, the convenience is top notch. The abundant exterior storage sits at a comfortable height for loading and comes with unobstructed pass-throughs. Climate, plumbing and automotive systems are designed to be the easiest to use. Even in the details — like cabinetry designed to be easily reached but never in the way — you can tell convenience was a priority.

Nothing's lacking in comfort either, as Winnebago's exclusive Home Comfort Design process helps to create a terrific home. All Adventurer interiors are bright and spacious. For those who like even more room, check out the new 37RW model — the longest Adventurer ever built.

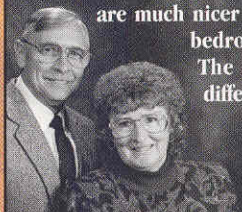
And in an Adventurer, you always arrive in style. The impeccably dressed Adventurer has a sleek front, a smooth, crowned roof and an elegant touch of graphics. Inside and out, Adventurer's style surpasses any other basement motor home you'll see.

Best of all, the Adventurer is very affordably priced. All the more incentive to leave the competition behind.

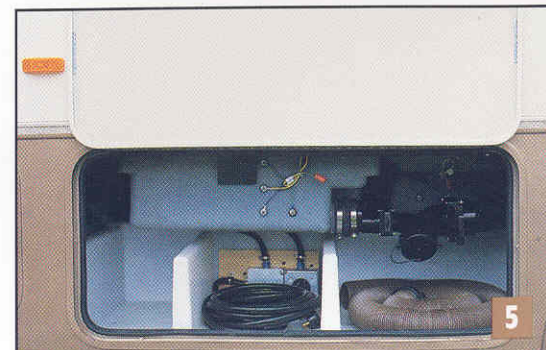
Model 34RQ featured throughout brochure, except where noted.



"We looked at lots of other motor homes including LaSalle's, Coachmen and Bounder. We bought the Adventurer over the Bounder because of the looks, the bigger window, more of a designer interior — the materials are much nicer on the couch and the bedroom was more homey. The design made a lot of difference."

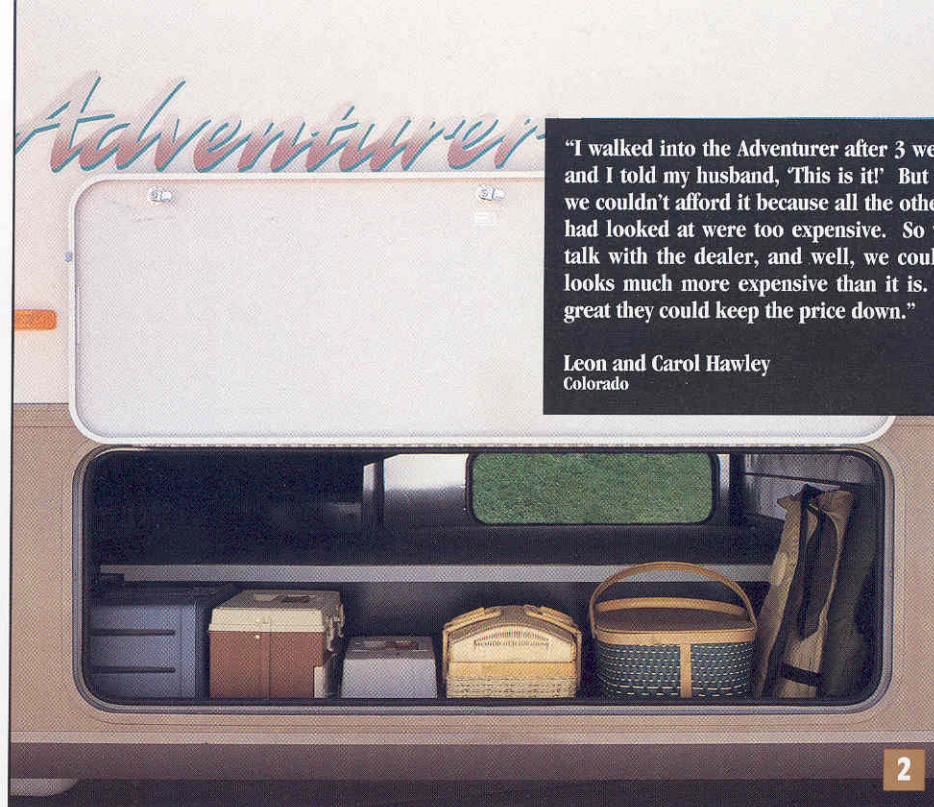


Leon and Carol Hawley
Colorado





1



"I walked into the Adventurer after 3 weeks of looking, and I told my husband, 'This is it!' But we figured that we couldn't afford it because all the other bus styles we had looked at were too expensive. So we sat down to talk with the dealer, and well, we could afford it. It looks much more expensive than it is. I think it was great they could keep the price down."

Leon and Carol Hawley
Colorado

2

1 The front end curves gracefully into smooth Thermo-Panel® sidewalls. New graphics, radial tires and TV antenna system are standard on every model. Optional wheel liners are shown.

2 Expansive, pass-through storage bay with wide, radius-cornered opening and weather-sealed door. Features floor lining, light, holdup catches, and dual locks.

3 Sweeping, tinted windshield and large side windows for excellent visibility. Full-width engine hood, quad headlights, recessed running lights and low mounted wipers.

4 Pull-out shower, a standard feature with its own pump switch.

5 Utility center includes electrical and cable TV connections, as well as conveniently reached holding tank valves. Floor hatch in each section for use with main door closed. Easy-cleaning plastic floor.

6 Single-piece, crowned fiberglass roof won't tear, puncture or deteriorate from sunlight and heat. Comes with a great 10-year limited warranty covering both parts and labor.

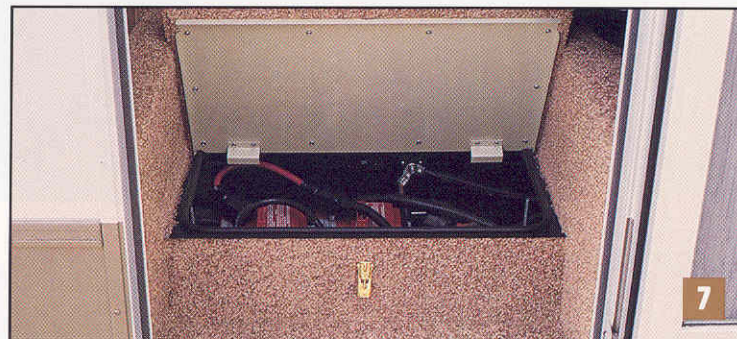
7 Easy-access stepwell compartment houses two powerful 12-volt coach batteries and the engine battery.

8 With AM/FM cassette stereo, TV connections and removable table, the exclusive patio entertainment center is a popular option.

9 A variety of generators between 4,000 and 7,000-watts are available on the Adventurer.



6



7



8



9

Even When It's Standing Still, It's Moving.

The Adventurer is delightful on the road, but there's something equally stirring about it when you stop for the night. Perhaps the satisfaction comes from the abundance of interior space — for storage, to move about, to relax.

In terms of design, the Adventurer has more headroom, more wall-to-wall footage and a single-level floor throughout. Add furniture, and you're suddenly in a motor home that's more inviting than any other. There's a balance of space and style, enhanced by the coordinated fabrics, carpeting and elegant wood tones. The combination of great looks and plenty of room to stretch out makes it the perfect place to unwind.

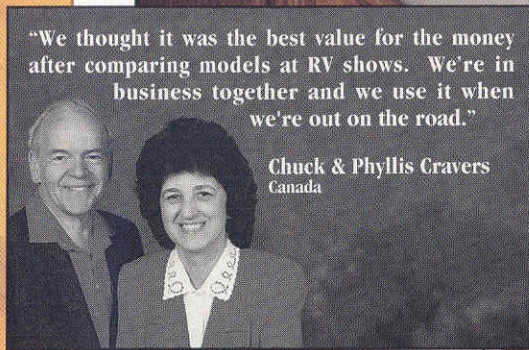
Adventurer also comes loaded with features you won't see elsewhere. Take the galley: A recessed, flush-mounted refrigerator/freezer. Easily reached cupboards and microwave. A central monitor panel. Plus, there's extra cabinet and drawer space, a standard spice rack and a larger sink.

Exclusive features continue throughout. The storage is deeper and more abundant. There's extra mirror space and makeup lights. An optional home-style dinette. Wood divider doors. And the list goes on.

That's a lot to take into account. Space. Comfort. Exclusive features. It's no wonder the Adventurer is moving more people than ever before.

"We thought it was the best value for the money after comparing models at RV shows. We're in business together and we use it when we're out on the road."

Chuck & Phyllis Cravers
Canada



1



2



3



1 Deep overhead cabinets with adjustable shelving, etched-mirrors and solid oak doors. Convertible sofa and dinette. Under-seat dinette storage drawers. Padded vinyl headliner for a quiet ride. Fabrics treated with Scotchgard™ Protector. Stain-free carpet with pad.

2 The 34RA side aisle layout offers a unique bathroom arrangement, a large, walk-in mirrored closet and a handy storage hutch.

3 An ideal use of space — flush-mounted sliding sink cover and easy to reach cabinets and appliances. All features standard except the coffee maker, vinyl flooring and water purification system. Name-brand appliances throughout.

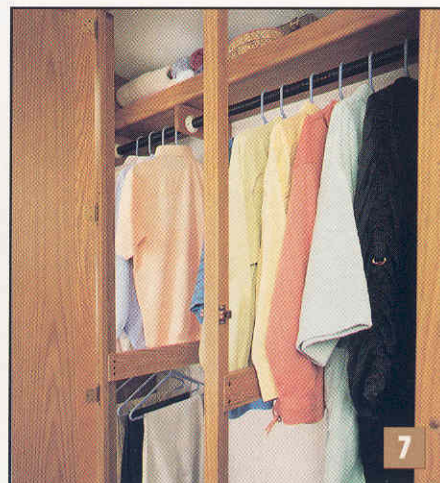
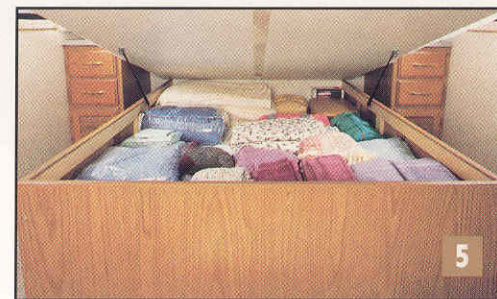
4 Fully coordinated high-line fabrics throughout the bedroom. Tip-out windows with screens. Every feature pictured comes standard.

5 Easily accessed underbed storage accommodates bulky items.

6 Bathroom conveniences include makeup lights, mirrors on medicine cabinet and wall, marine toilet w/sprayer, extra water pump switch, single-piece shower surround with molded shelves, and screened window.

7 Three mirrored doors open to a spacious wardrobe with shelving, drawers and multi-level bars for full-length hanging.

8 Bedroom dresser comes with travel-secure wood drawers and angled TV shelf. Remote control color TV is optional.



Amazing Things Happen When We Push The Possibilities.

The 34RQ Pusher is the rear diesel engine chassis option that takes Adventurer to the next level of performance. The Cummins® engine gives you more torque for better passing power and greater towing capacity. And because it's a diesel engine, you also get exceptional fuel economy and longer engine life with lower "per-mile" costs.

You'll notice the difference right away. The cab is opened up so it's easier to get into the forward seats. Plus, there's a nice absence of engine noise in the cab. For longer touring, you'll also enjoy the larger 90 gallon gas tank.

1 Eliminating the front engine cover provides easier movement in the cab area, an additional under-floor storage well and an oak storage cabinet/beverage tray.

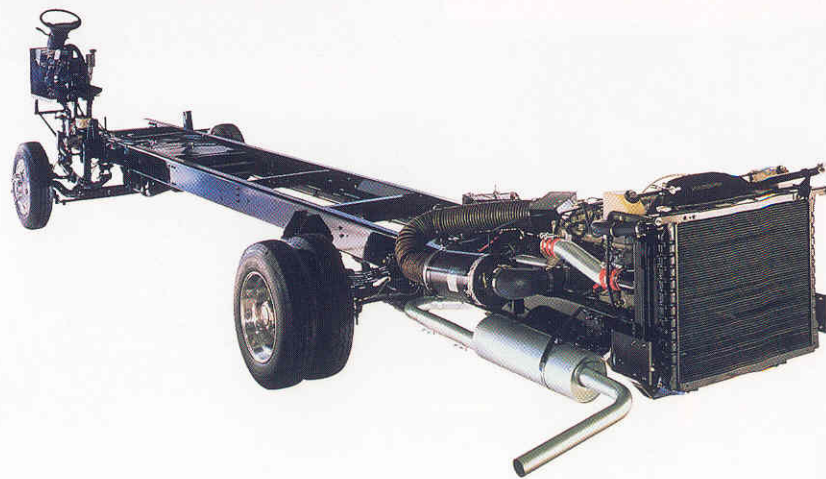
2 Powered by a 5.9L turbo-charged, 190 horsepower after-cooled diesel engine. Diesel's advantage means lower operating costs and increased engine life. Oshkosh® X-Line chassis provides better maneuverability with a wide-track front suspension. Allison AT-542 automatic transmission and 3.31:1 axle ratio for excellent towing and passing power, even uphill.

3 Engine access door swings up for easy maintenance and is fully louvered for maximum air flow.



"Well, I'll tell you, we really like it. This is our fifth motor home, and our first Winnebago. I've always wanted one. You just don't find the same quality in other motor homes. It's a nice outfit, there's just no way around it. I traded a 1990 Cobra Malibu for it. I find the Adventurer Pusher to be superior in every way."

James and Bonnie Levleit
Michigan



Adventurer[®]

WINNEBAGO[®]

**You'll get more into it.
You'll get more
out of it.**

Of course the Adventurer's known for high storage. But that's only half the story. Adventurer has a longer list of standard features than the competition. And thanks to Winnebago's exclusive Home Comfort Design, its liveability makes it your best value in Class A basement motor homes.

So take a closer look. For 1993, we've designed stylish new graphics and added the 37RW (with a rear wardrobe and extra kitchen space) to the three front-engined models and the 34RQ diesel pusher. All Adventurers come with a solid steel foundation, steel cab structure, and an excellent warranty package. With the convenient storage, interior comfort, and all-around style we packed into it, you're sure to get even more out of it.

Structural Highlights.

- Large, wrap-around windshield with extra-wide cab window shade band, firmly mounted in steel with automotive-style adhesives
- Steel cab, cab floor and dash substructure, with solid steel floor riser system welded to chassis
- Steel beam reinforced bumper mounted directly to chassis
- Aluminum underflooring and rear bumper resist corrosion
- Steel appliance tie-down system
- Strong yet light-weight welded aluminum sidewall and roof structure
- Central under-floor furnace duct
- Sound-proof steel generator compartment
- Standard class II hitch mounted to chassis
- Crowned, single-piece fiberglass roof with 10 year warranty

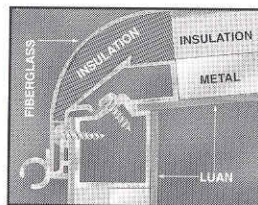


**We're With You
Down The Road.**

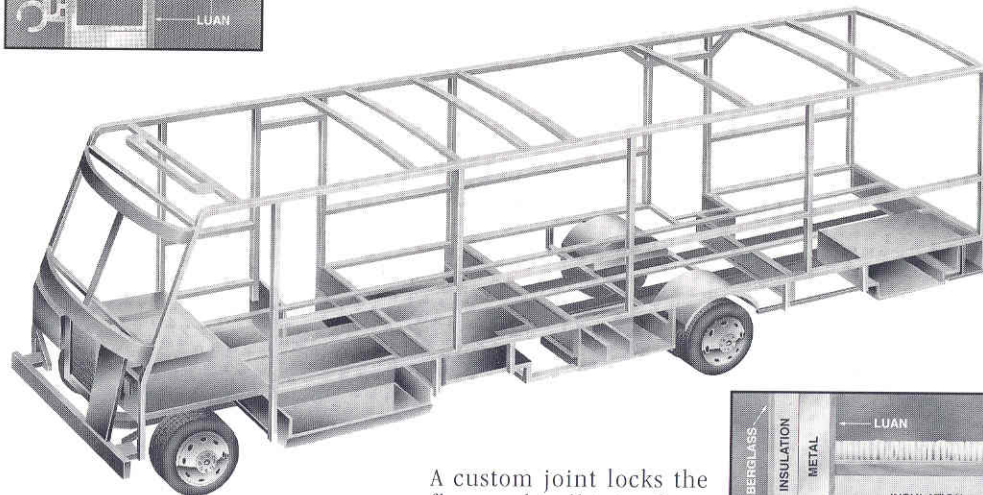
**Model 34RQ
w/Optional Rear Entry**

All 1993 Winnebago motor homes come with the most comprehensive care and warranty package available. The Preferred Care Program gives you on-the-road consultation and emergency service assistance anywhere in the U.S. or Canada, complete

with a 24-hour toll-free hotline, 365 days a year. The Winnebago Customer First Warranty Plan includes extended structural, carpet and fiberglass coverage in addition to the base warranty. The Winnebago care and warranty package is a commitment — we'll be with you down the road.



Our exclusive locking joint system links the roof and sidewalls for strength and stability. The crowned roof surface overlaps the sidewalls for excellent moisture runoff.



A custom joint locks the floor and wall into place, allowing the weight of the sidewall to be supported by the floor structure.

1993 ADVENTURER	32RQ	34RQ	34RA	37RW	34RQ Pusher
Length	32'	34'	34'	37'4"	34'
Exterior Height w/Roof Air					
Chevrolet	11'1"	11'1"	11'1"	11'1"	NA
Ford	11'2"	11'2"	11'2"	11'2"	NA
Oshkosh	NA	NA	NA	NA	11'5"
Exterior Width	8'0"	8'0"	8'0"	8'0"	8'0"
Interior Height	6'8"	6'8"	6'8"	6'8"	6'8"
Interior Width	7'7"	7'7"	7'7"	7'7"	7'7"
Fuel Capacity (Gals.): Chevrolet/Ford	78/75	78/75	78/75	78/75	NA/NA
Oshkosh	NA	NA	NA	NA	90
Fresh Water Capacity (Gals. w/Heater)	106	106	106	106	106
Holding Tank Cap. (Gals.)					
Toilet	69	55	NA	55	55
Toilet/Lav.	NA	NA	69	NA	NA
Shower/Galley	NA	NA	50	NA	NA
Shower/Galley/Lav.	50	50	NA	50	50
LP Capacity (Lbs.)	80	100	100	100	130
GVWR (Lbs.): Chevrolet	16,000	16,000	16,000	18,000	NA
Ford (Optional)	17,000	17,000	17,000	18,000	NA
Oshkosh	NA	NA	NA	NA	18,000
Wheelbase	208"	228"	228"	228" +Tag	228"
Exterior Storage Capacity (Cu. Ft.)	89	106	110	102	106

CHASSIS/ENGINE	32RQ	34RQ	34RA	37RW	Pusher
Chevrolet Chassis: 7.4L 454 V-8 Fuel-Injected Gasoline Engine Automatic Transmission w/Overdrive & Cooler Front Suspension: Independent; Coil Spring w/Aux. Air Spring Rear Suspension: Leaf Spring 630-CCA Battery/105-Amp. Alternator	■	■	■	■	
Chevrolet Gas Shocks (Front)	□	□	□	□	
Chevrolet Auxiliary Air Springs (Rear)	□	□	□	□	
Ford Chassis: 7.5L 460 V-8 Fuel-Injected Gasoline Engine Automatic Transmission w/Overdrive & Cooler Front Suspension: Mono-Beam Axle w/Leaf Spring Rear Suspension: Multi-Leaf Spring 650-CCA Battery/130-Amp. Alternator	□	□	□	□	
Oshkosh Chassis: 5.9L, 190 H.P. Cummins After-Cooled Turbo-Diesel Engine Automatic Transmission w/Overdrive & Cooler Front Suspension: I-Beam w/Leaf Spring Rear Suspension: Leaf Spring 923-CCA Battery/100-Amp. Alternator					■

AUTOMOTIVE/CAB FEATURES	32RQ	34RQ	34RA	37RW	Pusher
Battery Disconnect - Auxiliary	■	■	■	■	■
C.B. Prep Kit - Antenna, Coax wiring, 12-V Power Connection	□	□	□	□	□
Convenience Package - • Beverage Holder Tray, Map Light, Sunvisors w/Map Pockets, Wrap-Around Curtain	■	■	■	■	■

■ Standard □ Optional ➤ Special Feature

AUTOMOTIVE/CAB FEATURES (cont.)	32RQ	34RQ	34RA	37RW	Pusher
Cruise Control	■	■	■	■	■
Defroster Fans (Aux. 2-Speed) w/Switch	□	□	□	□	□
Emergency Start Solenoid w/Dual Battery Switch	■	■	■	■	■
Heating/Air Conditioning - Automotive Blend Air System	■	■	■	■	■
Mirrors (Rearview) - Deluxe Upgrade w/Convex Element	□	□	□	□	□
Monitor System - Rearview	□	□	□	□	□
Overhead Cabinets	■	■	■	■	■
Seats w/3-Point Retracting Seatbelts • Reclining Bucket w/Lumbar Support & Armrests • Armrest Mounted Remote Controls for Recline/Swivel	■	■	■	■	■
Steering - Power Assist w/Tilt Wheel	■	■	■	■	■
Stereo - AM/FM Cassette Deck w/Digital Clock • Electronic Tune w/Auto Reverse & Speakers (4)	■	■	■	■	■
Stereo Power Switch - For Main or Auxiliary Battery Use	■	■	■	■	■
Tires (Radial) w/Spare	■	■	■	■	■
Upgrade - Driver's Convenience Package • Carpeted Floor Mats, Wall-Mount Map Pockets	□	□	□	□	□
Windows (Sliding) w/Screens	■	■	■	■	■
Windshield Wipers - Steel-Mounted w/Intermittent Function	■	■	■	■	■

COLOR OPTIONS	32RQ	34RQ	34RA	37RW	Pusher
Color Themes - Interior • Choice of Island Sky (Blue) or Moccasin (Brown)	□	□	□	□	□

INTERIOR FEATURES: GENERAL	32RQ	34RQ	34RA	37RW	Pusher
Cabinetry - Oak-Framed Doors w/Mirror or Oak Inserts	■	■	■	■	■
Carpeting w/Pad - Stain Resistant w/Scotchgard™ Protector	■	■	■	■	■
Ceiling - Padded Vinyl Headliner	■	■	■	■	■
Ceiling Vents (Non-Powered) - Living Room, Galley, Bedroom	■	■	■	■	■
Windows - Tinted w/62% Light Transmittal • Tip-Out w/Screens in Galley, Bath & Bedroom	■	■	■	■	■

INTERIOR FEATURES: LIVING ROOM	32RQ	34RQ	34RA	37RW	Pusher
Clock - Decorator Style	■	■	■	■	■
Lamps - Decorator Style; Wall-Mounted	■	■	■	■	■
Light (Aisle Courtesy) - by Entrance Door	■	■	■	■	■
TV Enhancement Package • Antenna (Amplified), 12-V Receptacle • Interior Jacks (2), Coax Wiring, Cable Input	■	■	■	■	■
TV (13" Color) w/Remote Control	□	□	□	□	□
TV (13" Color) & VCR w/Switching System & Remote Control	□	□	□	□	□
TV/VCR 110-V Inverter	□	□	□	□	□

INTERIOR FEATURES: GALLEY	32RQ	34RQ	34RA	37RW	Pusher
Coffee Maker - Below Cabinet	□	□	□	□	□
Dining Table & Chairs *	□	□	□	□	□

INTERIOR FEATURES: GALLEY (cont.)	32RQ	34RQ	34RA	37RW	Pusher
Flooring - Vinyl	<input type="checkbox"/>	<input type="checkbox"/>	<input type="checkbox"/>	<input type="checkbox"/>	<input type="checkbox"/>
Hutch			■		
Microwave Oven	■	■	■	■	■
Mirror - Wall-Mounted in Dining Area	■	■		■	■
Ice Maker (Exchange For File Cabinet)				<input type="checkbox"/>	
Paper Towel Holder	■	■	■	■	■
Range (4-Burner; Bi-Fold Cover) w/Large Oven (Glass Door)	■	■	■	■	■
Range Hood w/Light & Powered Vent	■	■	■	■	■
Refrigerator/Freezer - Large Double-Door	■	■	■	■	■
Sink (Double) - Recessed Stainless Steel w/Countertop Cover	■	■	■	■	■
Storage Drawers - Roll-Out; Below Dinette Seats	■	■	■	■	■
Water Purification System on Cold Water Line	<input type="checkbox"/>	<input type="checkbox"/>	<input type="checkbox"/>	<input type="checkbox"/>	<input type="checkbox"/>

INTERIOR FEATURES: BATHROOM	32RQ	34RQ	34RA	37RW	Pusher
Bath Accessories • Molded Soap Dish, Towel Ring, Towel Rack & Tissue Holder	■	■	■	■	■
Makeup Lights	■	■	■	■	■
Medicine Cabinet w/Sliding Mirrored Doors	■	■			■
Medicine Cabinet w/Wood-Framed Mirrored Doors			■	■	
Mirror - Wall-Mounted	■	■			■
Shower w/Flexible Head & Molded Single-Piece Walls	■	■	■		■
Shower & Tub w/Flexible Shower Head • Molded Single-Piece Walls & Solid Glass Door				■	
Toilet (Marine) w/Sprayer	■	■	■	■	■
Vent - Powered	■	■	■	■	■

INTERIOR FEATURES: BEDROOM	32RQ	34RQ	34RA	37RW	Pusher
Bedsread(s), Throw Pillow(s), Pillow Shams, TV Shelf	■	■	■	■	■
Lamp(s) - Decorator Style; Wall-Mounted	■	■	■	■	■
TV (9" Color) w/Remote Control	<input type="checkbox"/>	<input type="checkbox"/>	<input type="checkbox"/>	<input type="checkbox"/>	<input type="checkbox"/>
Wardrobe w/Mirrored Doors, Carpeted Floor & Light	■	■	■	■	■

EXTERIOR FEATURES	32RQ	34RQ	34RA	37RW	Pusher
Awning Rail	■	■	■	■	■
Entertainment Center (Patio)* - Locking • AM/FM Radio, Cassette Deck, Speakers (2), TV Table • 12-V Receptacle, 110-V Outlet, TV Jack, Radio Antenna	<input type="checkbox"/>	<input type="checkbox"/>	<input type="checkbox"/>	<input type="checkbox"/>	<input type="checkbox"/>
Entrance Door Lock w/Deadbolt	■	■	■	■	■
Entrance Door (Main) w/Screen Door & Electric Steps	■	■	■	■	■
Entrance Door (Rear)* w/Screen Door & Steps		<input type="checkbox"/>			
Holding Tanks - Heated	■	■	■	■	■
Leveling Jacks	<input type="checkbox"/>	<input type="checkbox"/>	<input type="checkbox"/>	<input type="checkbox"/>	<input type="checkbox"/>
Luggage Rack & Ladder	■	■	■	■	■
Mud Flaps - Rear	■	■	■	■	■

EXTERIOR FEATURES (cont.)	32RQ	34RQ	34RA	37RW	Pusher
Outlet - 110-Volt on Patio Side	■	■	■	■	■
Porch Light w/Interior Switch	■	■	■	■	■
Sewer Hose in Service Compartment	■	■	■	■	■
Shower w/Water Pump Switch	■	■	■	■	■
Storage Compartments w/Lining, Locks, Hold-Ups & Lights	■	■	■	■	■
Tire Tools - Wrench, Leverage Bar • Tire Hoist Rod Included on Oshkosh Chassis	■	■	■	■	■
Trailer Towing Package w/Class II Hitch	■	■	■	■	■
Undercoating	<input type="checkbox"/>	<input type="checkbox"/>	<input type="checkbox"/>	<input type="checkbox"/>	<input type="checkbox"/>
Water Faucet & Water Tank Drain	■	■	■	■	■
Water Fill Door - Lockable	■	■	■	■	■
Wheel Covers - Chrome	■	■	■	■	■
Wheel Liners - Stainless Steel	<input type="checkbox"/>	<input type="checkbox"/>	<input type="checkbox"/>	<input type="checkbox"/>	<input type="checkbox"/>

SYSTEMS	32RQ	34RQ	34RA	37RW	Pusher
Air Conditioning Pre-Wiring	■	■	■	■	■
Air Conditioner (Roof) - 13,500-BTU	<input type="checkbox"/>	<input type="checkbox"/>	<input type="checkbox"/>	<input type="checkbox"/>	
Air Conditioners* (Roof) - Front/Rear: 13,500/11,000-BTU	<input type="checkbox"/>	<input type="checkbox"/>	<input type="checkbox"/>	<input type="checkbox"/>	
Air Conditioners* (Roof) - Front/Rear: 13,500/13,500-BTU	<input type="checkbox"/>	<input type="checkbox"/>	<input type="checkbox"/>	<input type="checkbox"/>	
Air Conditioners (Low Profile Roof) • Front/Rear: 13,500/13,500-BTU					<input type="checkbox"/>
Batteries (2) - Deep Cycle RV; In Stepwell Compartment	■	■	■	■	■
Electrical Control Center - 110-V AC/12-V DC • 9-Amp. Battery Charger, 45-Amp. Converter, 12-V Fuses, 110-V Circuit Breakers, 30-Amp Power Cord	■	■	■	■	■
Furnace* (Electronic Ignition) - 34,000-BTU 40,000-BTU	■	■	■	■	■
Generator Prep Kit - Gas Line, 12-V Wiring • Start/Stop Switch & Hourmeter Gauge	■	■	■	■	■
Generator* - 4,000, 5,000, 6,300, 6,500 or 7,000-Watt • Second Generator Switch Located in Bedroom • See Dealer for Specific Brand Information	<input type="checkbox"/>	<input type="checkbox"/>	<input type="checkbox"/>	<input type="checkbox"/>	<input type="checkbox"/>
Monitor Panel • Water, Holding & LP Tank Levels; Battery Condition Gauge; Water Heater Ignition Switch w/Pilot Indicator Light; Water Pump Switch	■	■	■	■	■
Water Heater (Motoraid) & Rear Automotive Heater	<input type="checkbox"/>	<input type="checkbox"/>	<input type="checkbox"/>	<input type="checkbox"/>	
Water Heater - 6-Gal.; Electronic Ignition	■	■	■	■	■
Water Heater Winterization By-Pass Valve	■	■	■	■	■
Water Pump (Demand) w/Three Switch Locations	■	■	■	■	■

SAFETY FEATURES	32RQ	34RQ	34RA	37RW	Pusher
Fire Extinguisher (10-B.C.)	■	■	■	■	■
Ground Fault Interrupter	■	■	■	■	■
LP Leak Detector	■	■	■	■	■
LP Leak Tester Gauge	■	■	■	■	■
Smoke Detector	■	■	■	■	■

* Not all options available in combination. See your dealer for details.

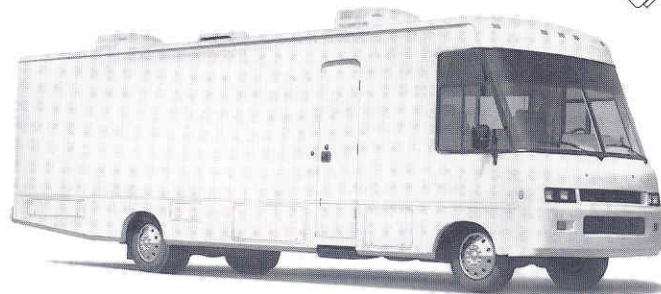
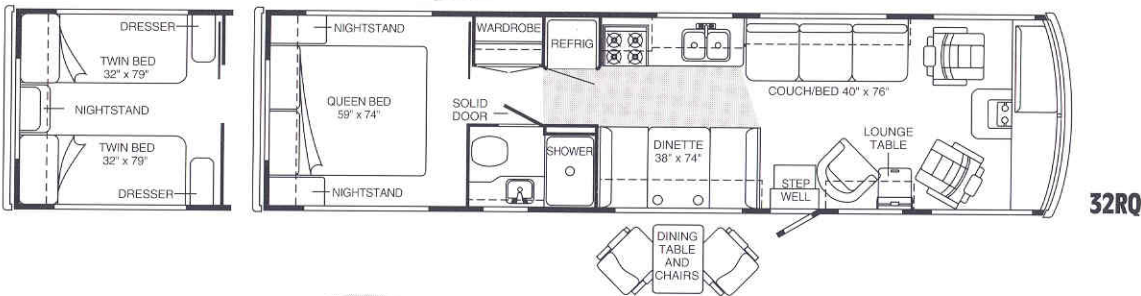
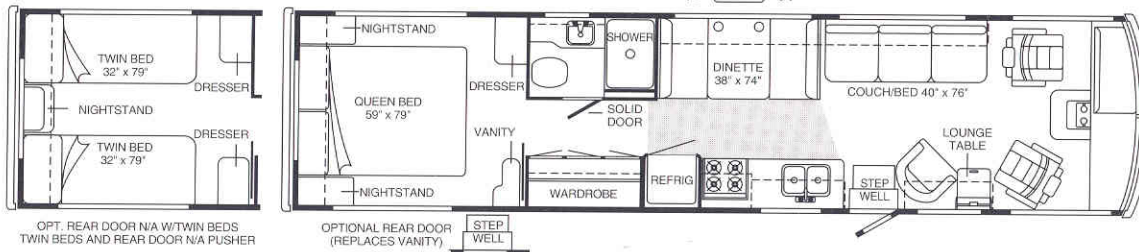
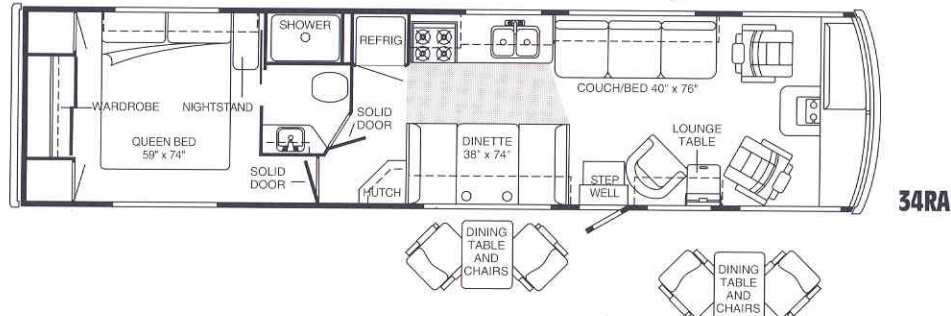
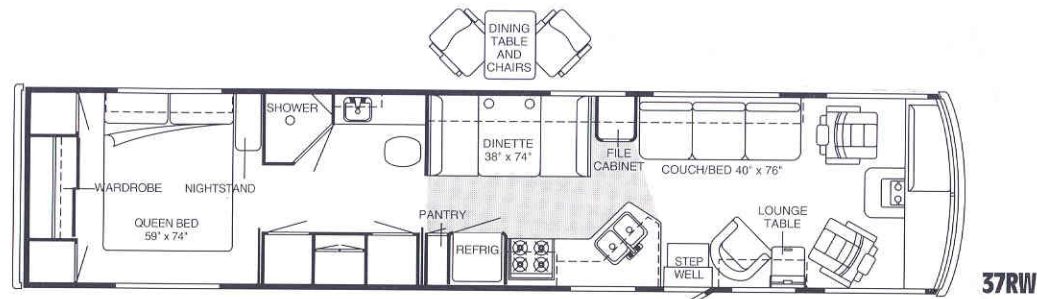
NEW 37RW The longest model to date, with an unbelievable amount of storage and living space. • Two large wardrobes, one in the bedroom and one in the spacious bathroom. • Angled sink design makes for extra kitchen counter space.

34RA Attractive side aisle layout adds privacy and an extra dimension of comfort. • Full-width bedroom wardrobe. • Two bathroom entries and a walkway hutch are special side aisle features.

34RQ & 34RQ Pusher Popular, center aisle design. • Spacious bedroom with dresser and vanity. • Cab engine cover replaced on the Pusher with a cabinet and large storage well. • Rear door and twin bed options not available on Pusher.

32RQ A comfortable floorplan with a great combination of liveability and efficiency in a shorter length. • Roomy living area and fully equipped galley. • Uncompromised bathroom space.

Special Vehicle The Adventurer is also available with an open interior for custom design. • Ideal for classrooms, showrooms, labs, mobile police units. • Standard cab equipment, load capacity and systems (air conditioning, heating, etc.). • Details at your Winnebago dealer.



Dimensions shown are for sleeping space only and dashed lines denote overhead storage area. Darker tint area indicates optional vinyl floor covering.

Winnebago Industries' continuing program of product improvement makes specifications, equipment, model availability and prices subject to change without notice.

Home Comfort Design

Every motor home model that rolls off the Winnebago assembly line reflects our exclusive strategy for making your RV the most liveable — Home Comfort Design.

Furniture and cloth appointments in every Winnebago motor home are manufactured by our own Stitchcraft division to fit our specifications exactly. The interior decor both looks right and feels right. Space is used efficiently with plenty of living room and storage that is smart, roomy, and inconspicuous — but never out of reach. Switches, buttons, and levers are located for easy use. Together, the elements create the best living environment available.

The Winnebago Home Comfort Design concept means simply that our motor homes are designed with comfort, efficiency and good looks as top priorities. In practice, the Home Comfort Design process is setting new standards for easy and mobile living.

Home Comfort
W
DESIGN

The Most Comprehensive Standard Care And Warranty Package Anywhere.

Preferred Care Program

The Preferred Care Program offers on-the-road assistance throughout the United States and Canada. This program is free during your first year of new Winnebago motor home ownership and can be extended thereafter through our Winnebago-Itasca Travelers (WIT) Club. Included with your package is a special Winnebago Owner Service Guide which explains the program's services, and an I.D. Card with your identification number and toll-free calling information.

- **24-HOUR TOLL-FREE HOTLINE**
Staffed by experienced RV professionals year-round for Emergency Road Service and Customer Service Assistance.
- **EMERGENCY ROAD SERVICE**
24-Hour dispatch emergency road service and towing, provided through a network of over 20,000 pre-qualified locations, including Winnebago Industries dealers.
- **CUSTOMER SERVICE ASSISTANCE**
Preferred Care representatives provide immediate technical advice and are your access to qualified RV warranty service agencies nationwide. During your call, representatives can help pinpoint problems, make service appointments, and provide directions to service locations.

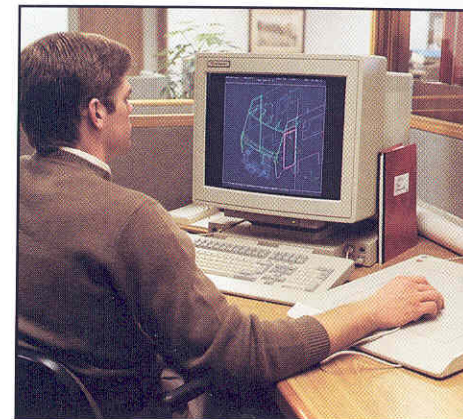
See your dealer for complete details on the Winnebago Industries' Preferred Care Program and Customer First Warranty Plan coverage.

Customer First Warranty

Included with every 1993 Winnebago motor home is an impressive package of base and extended warranty coverage.

- **STANDARD WARRANTY COVERAGE**
Every Winnebago motor home is covered by Winnebago Industries' standard 12 month, 15,000 mile limited warranty.
- **EXTENDED 36 MONTH/36,000 MILE STRUCTURAL WARRANTY**
Following the Standard Warranty expiration, extended new owner coverage continues to 36 months from purchase or 36,000 miles on the odometer, whichever comes first. This warranty includes the Thermo-Panel® construction and exterior fiberglass.
- **ADDITIONAL 10 YEAR EXTERIOR FIBERGLASS COVERAGE**
Every 1993 Winnebago motor home comes with limited warranty coverage on roof and sidewall surface materials for 10 years from the date of purchase, for the first owner.
- **100% STAIN-FREE CARPET PROTECTION**
All 1993 Winnebago motor homes feature a revolutionary new carpeting that provides beauty, comfort, tremendous wear and fade resistance and an amazing stain-fighting ability. The color is inherent in the carpet's fiber so it can be easily cleaned without affecting its appearance. All carpet is backed by a special, five year limited fade and stain warranty, a ten year limited wear warranty and lifetime limited anti-shock protection.

Why Winnebago Motor Homes Are Better Built.



It begins with design. Winnebago Industries pioneered the application of Computer Aided Design (CAD) technology to break new ground in performance and appearance. CAD allows us to respond more quickly to your wants and needs, while continuing to design and build higher quality motor homes.

Computer Aided Manufacturing (CAM) takes the design to the next step. All structural parts are produced on-site, including fiberglass and aluminum casting. The majority of the components



used in Winnebago motor homes are also created here at our factory in Forest City, Iowa, including furniture and hand-crafted cabinetry. From design through construction, we oversee every step of the process.



Extensive testing is another reason to believe in Winnebago quality. Our comprehensive testing program includes a hydraulic road simulator and test track for evaluation of structural integrity, a rain-tunnel with the power of a thunderstorm, and a variety of tests for everything from vibration and weight distribution to chipping and rust. No other motor home manufacturer has such an extensive commitment to quality design, testing and manufacturing — a benefit reflected in the excellent resale value of Winnebago motor homes.

protected by
Scotchgard™
Protector

All fabrics and carpeting in every 1993 Winnebago motor home are treated with stain resistant Scotchgard™ Protector for long lasting beauty and the ultimate in easy maintenance.



Winnebago-Itasca Travelers Club

All owners of Winnebago Industries' motor homes are invited to join the exclusive Winnebago-Itasca Travelers (WIT) Club. As a member of the WIT Club, you can take advantage of special services like the WIT Club News Magazine, professional trip routing and mail forwarding.

One of the best parts of WIT, though, is that you'll meet people who share your enthusiasm for the Winnebago motor home experience at local WIT rallies and caravans, and hundreds of other gatherings held throughout North America. The largest gathering is the Grand National Rally in Forest City, Iowa, where WIT members come together to enjoy name entertainment, seminars, craft activities and other programs.

For more information, call WIT at (515)-582-6874.

The Motor Home People

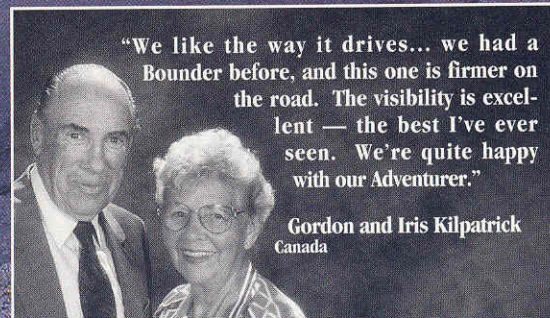
You can take pride in owning a Winnebago motor home, because you know that what you drive reflects our solid commitment to innovation and quality. The Winnebago Industries manufacturing facility is the RV industry's largest and is dedicated to building quality motor homes.

For over 30 years, Winnebago Industries' designers, engineers, assemblers, quality inspectors, dealers and hundreds of others have kept Winnebago on the leading edge of motor homing. With our continuing legacy of success, you drive the most trusted name on the road.

We invite you to come and see how we create the best-built motor homes available. The Winnebago Industries factory tour is free and includes a history of motor homing and current motor homes on display. You'll see firsthand why we're called the Motor Home People.

Call us at (515) 582-3535 for factory tour information.

For Winnebago Sales and Service, Contact:



"We like the way it drives... we had a Bounder before, and this one is firmer on the road. The visibility is excellent — the best I've ever seen. We're quite happy with our Adventurer."

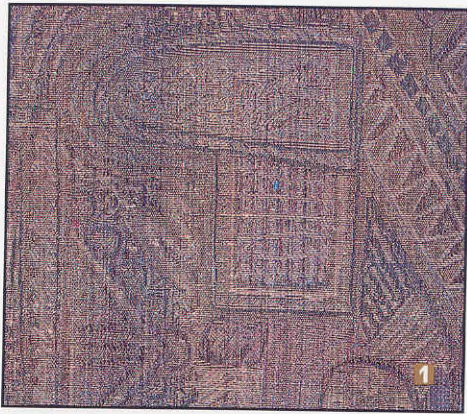
Gordon and Iris Kilpatrick
Canada

WINNEBAGO
THE MOTOR HOME PEOPLE

Interior Color Themes

Island Sky

- 1** Main Fabric: Architecturally-inspired collage of designs on a flat woven jacquard in multiple shades of blue
2 Plain Accent: Clear blue velvet
3 Patterned Accent: Clear blue velvet with multi colored squares and accents of navy blue
4 Carpet: Clear blue texture



Moccasin

- 1** Main Fabric: Warm brown velvet with overtones of turquoise, lilac and taupe
2 Plain Accent: Warm brown velvet
3 Patterned Accent: Warm brown textured velvet with turquoise, lilac and taupe rows of color
4 Carpet: Medium brown texture



Fold this flap onto the interior photograph pages to see how the color themes work within your motor home.