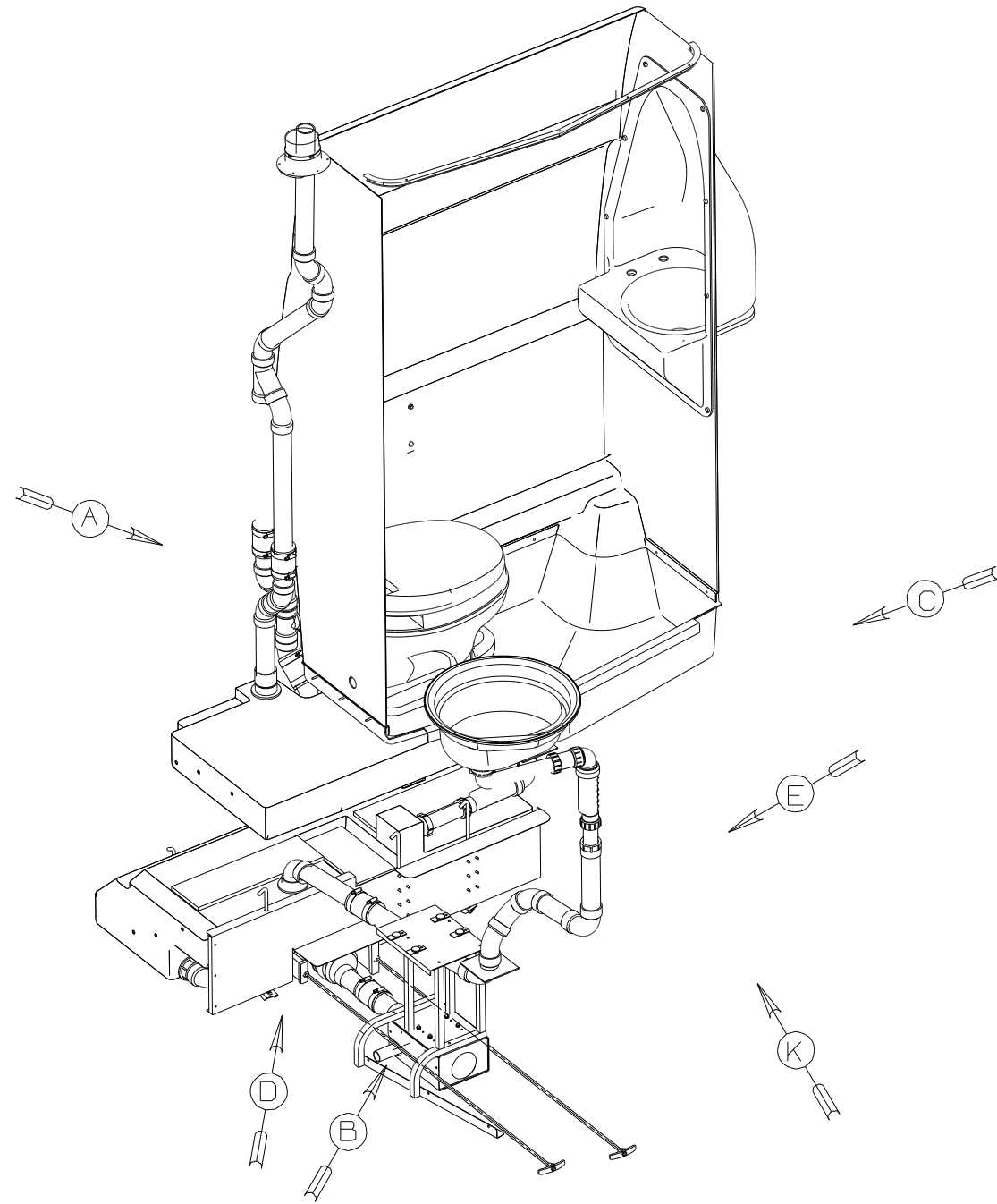


8 7 6 5 4 3 2



- 7. SECURE VENT PIPE WITH CLAMP 62401-02-000.
- 6. VENT PIPE MUST PROJECT 51 MIN AND 64 MAX ABOVE ROOF FOR PROPER FIT AND FUNCTION.
- 5. SEAL AROUND SHOWER WITH SILICONE.
- 4. SECURE DRAINAGE PIPES TO CABINET USING WIRE TIE 108046-02-000, AND SCREW G67-10-12B AT INTERVALS OF NOT MORE THAN 4 FEET APART.
- 3. ALL PIPE AND FITTINGS TO BE ASSEMBLED WITH SOLVENT 4020-01-000 (USA), 4020-02-000 (CAN)
- 2. SLOPE OF TRAP ARM MUST BE 6 PER 305 mm.
- 1. SLOPE OF HORIZONTAL PIPING TO BE MINIMUM OF 3 PER 305 mm.

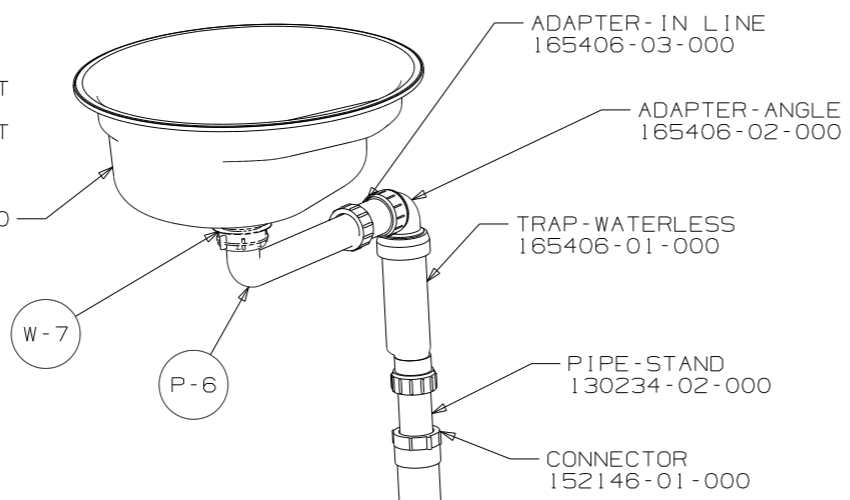
NOTES:

|                                 |             |   |        |
|---------------------------------|-------------|---|--------|
| <b>WINNEBAGO</b>                |             | COPYRIGHT 2009<br>WINNEBAGO<br>INDUSTRIES, INC. |        |
| DFTR                            | ORIG. DATE  | ALL DIMENSIONS ARE<br>IN MILLIMETERS            |        |
| CHKR                            |             | FIRST USED                                      |        |
| P.E.                            |             | 08 BV 1170                                      |        |
| M.E.                            |             | UNSPECIFIED TOLERANCES ARE:                     |        |
| DSNR                            |             | MATERIAL:                                       |        |
|                                 |             | WHOLE DIM (X)                                   | : 3    |
|                                 |             | ONE-PLACE (X.X)                                 | : 1.5  |
|                                 |             | TWO-PLACE (X.XX)                                | : 0.50 |
|                                 |             | ANGLE   | : 1°   |
| THIRD ANGLE<br>PROJECTION       |             | DO NOT SCALE DRAWING                            |        |
| TITLE:<br>DRAINAGE SYSTEM INSTL |             |   |        |
| SHEET 1 OF 5                    | PART NO     | 165748  | REV    |
| REF:                            | 1 7/31/2009 |   |        |

FOR  
DRAINAGE  
CALLOUTS  
SEE DWG NO  
116229-01-000

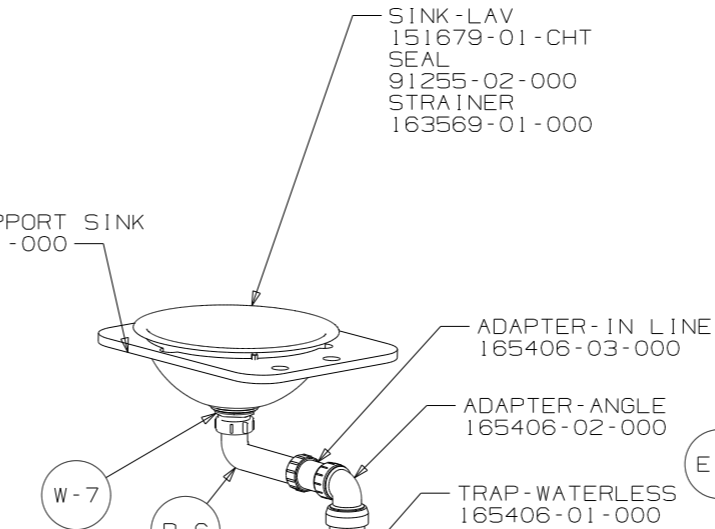
8 7 6 5 4 3 2

SINK - GALLEY  
165378-01-CHT  
FAUCET  
165378-02-CHT  
SEAL  
91255-02-000  
STRAINER  
163659-01-000

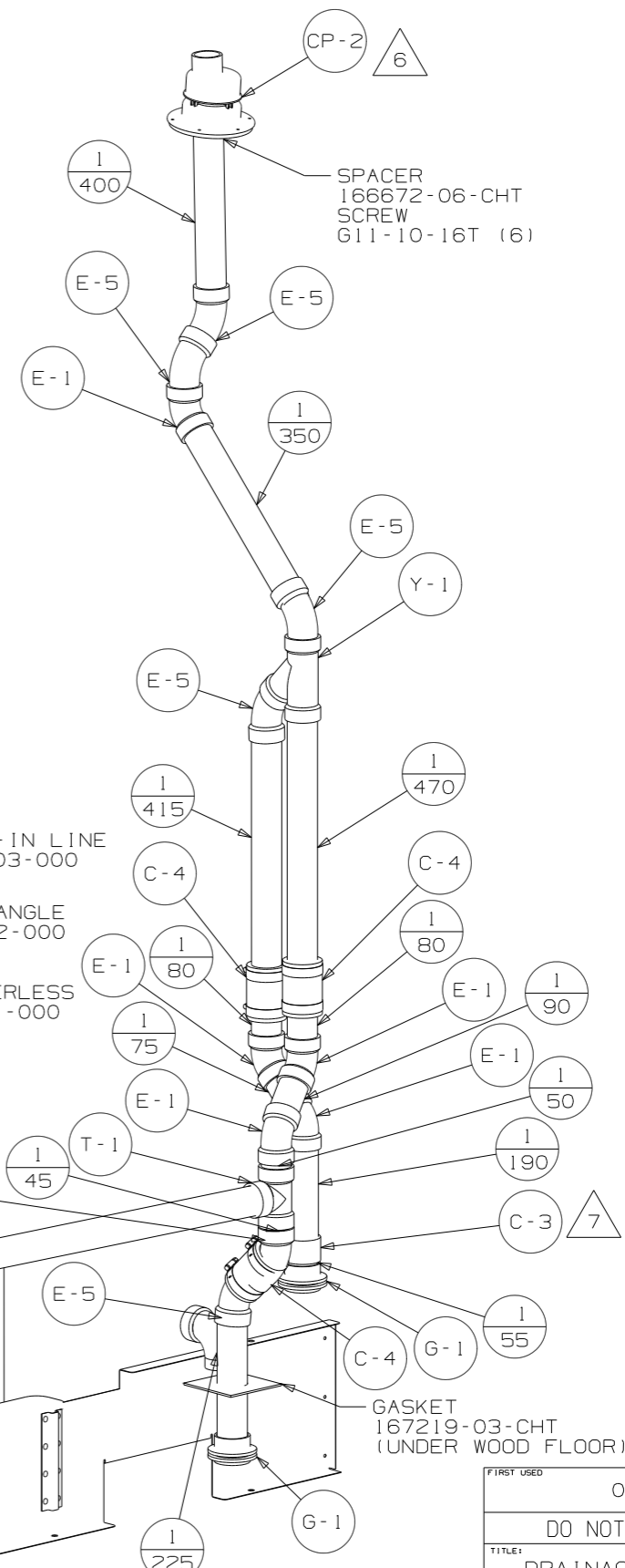


VIEW A

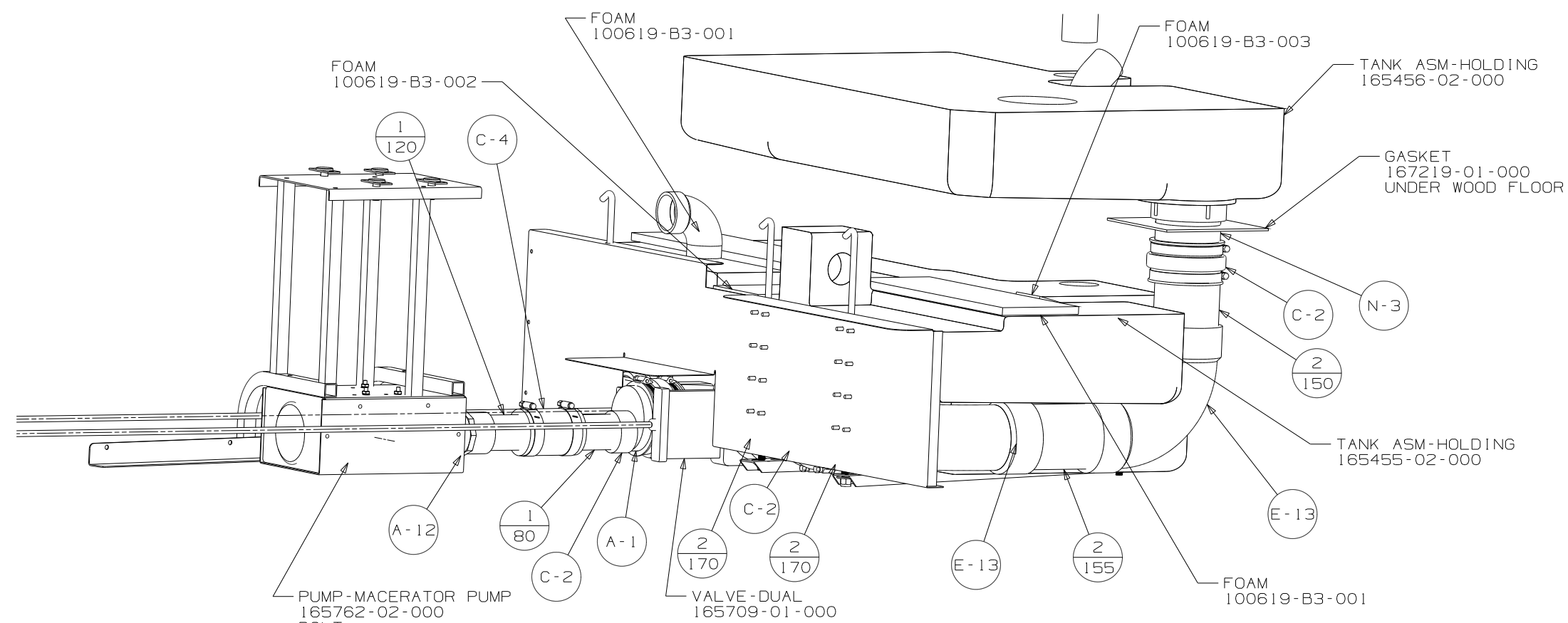
SINK - LAV  
151679-01-CHT  
SEAL  
91255-02-000  
STRAINER  
163569-01-000



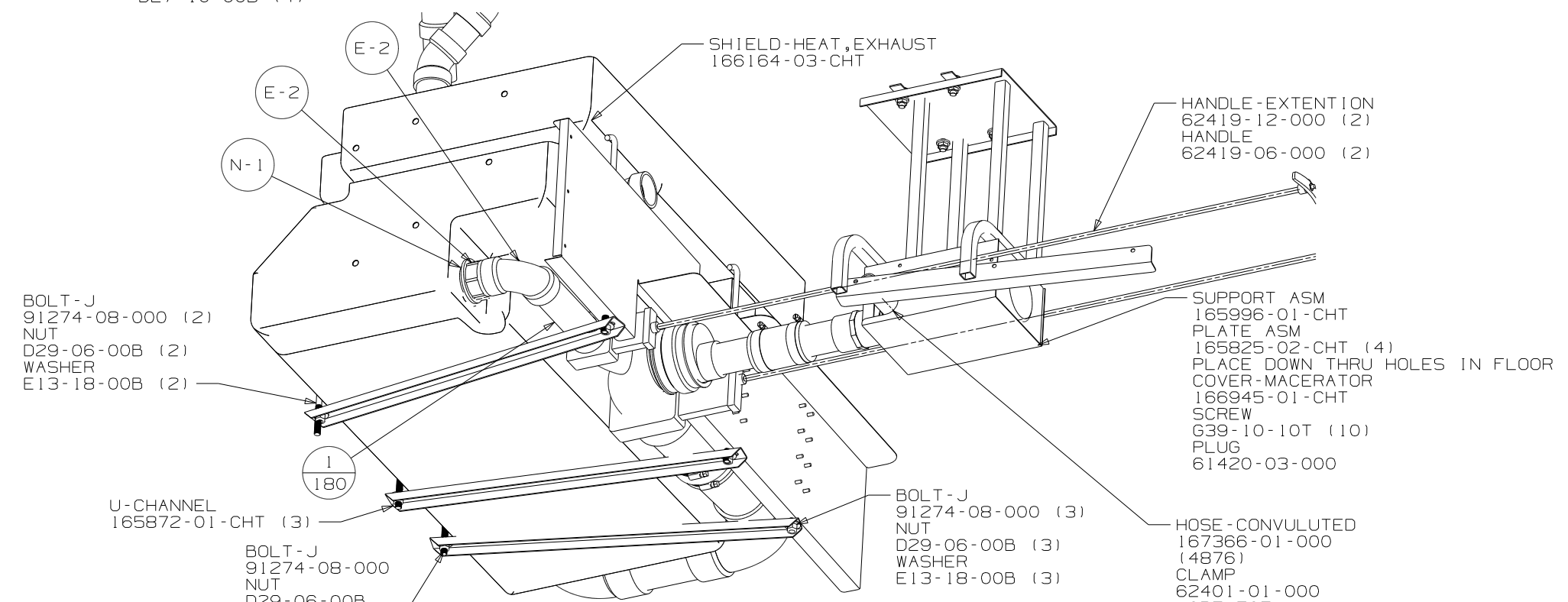
VIEW B



|            |                       |
|------------|-----------------------|
| FIRST USED | 08 BV 1170            |
| TITLE      | DO NOT SCALE DRAWING  |
| TITLE      | DRAINAGE SYSTEM INSTL |
| SHEET 2    | PART NO 165748        |

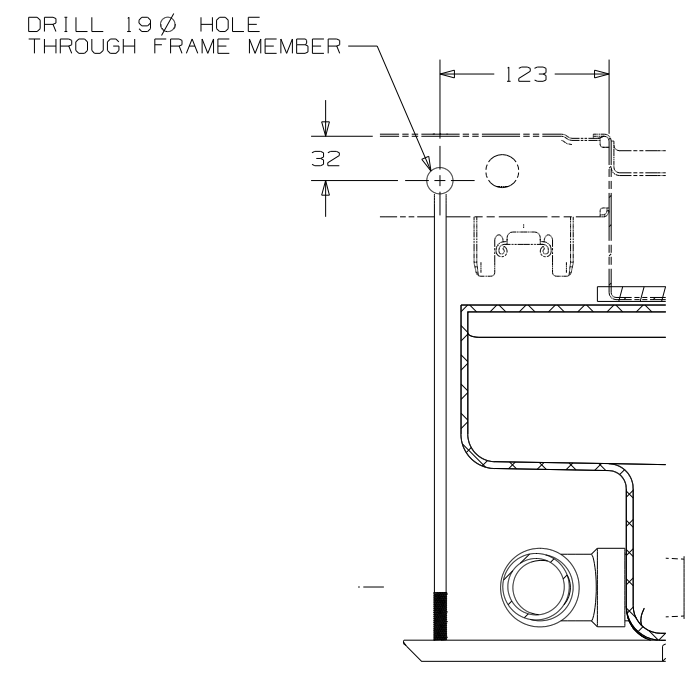
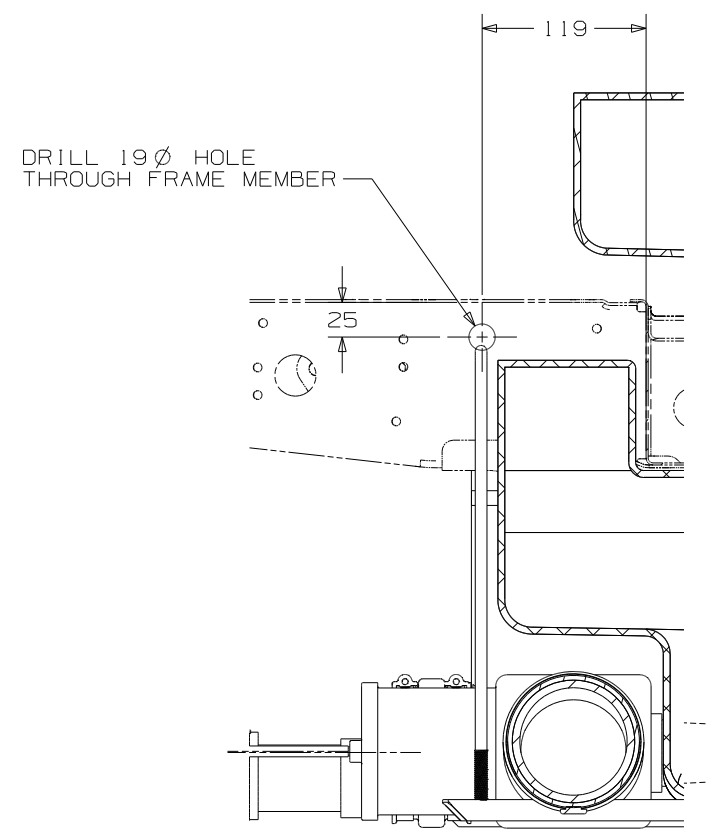
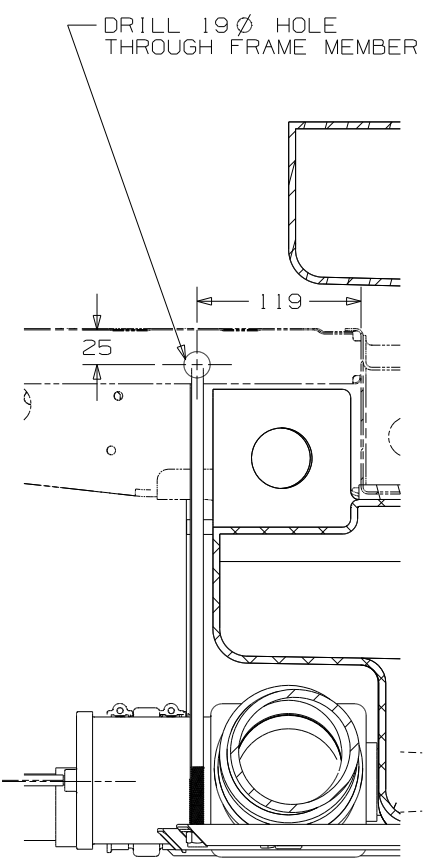
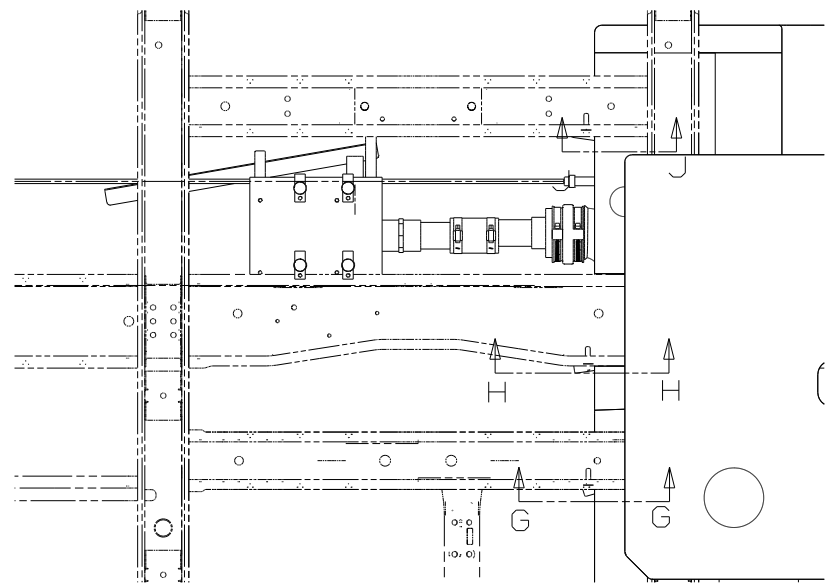
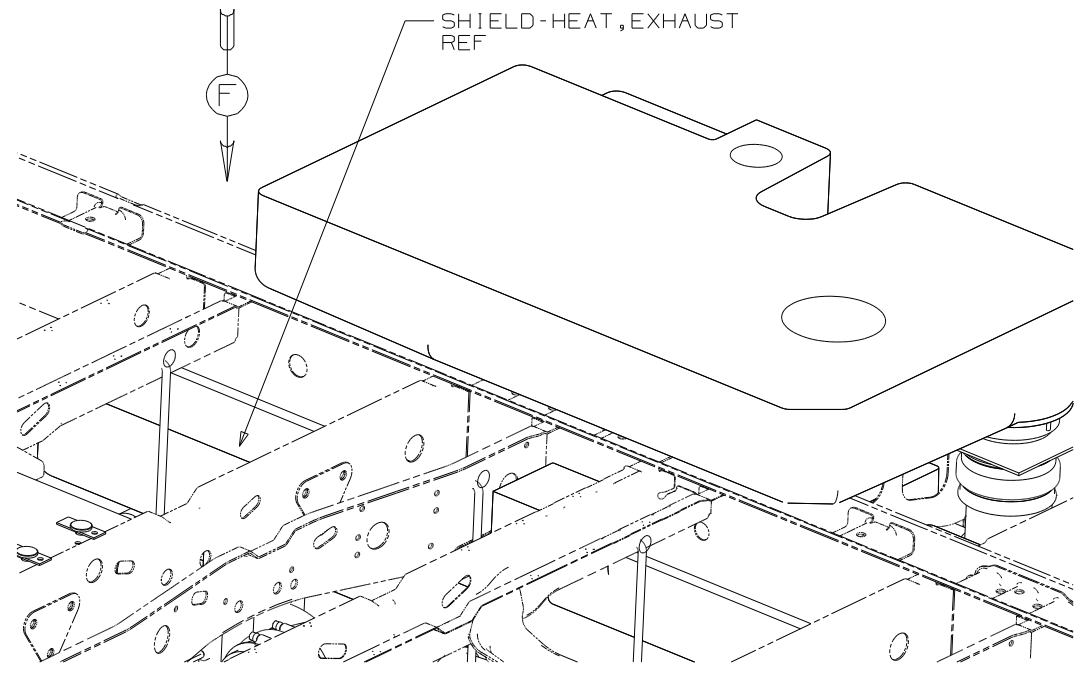


VIEW C



VIEW D

|            |                       |        |
|------------|-----------------------|--------|
| FIRST USED | 08 BV 1170            |        |
| TITLE      | DRAINAGE SYSTEM INSTL |        |
| SHEET 3    | PART NO               | 165748 |
| REV        |                       |        |



|            |                       |
|------------|-----------------------|
| FIRST USED | 08 BV 1170            |
| TITLE      | DO NOT SCALE DRAWING  |
|            | DRAINAGE SYSTEM INSTL |
| SHEET 4    | PART NO 165748 REV    |

7

6

5



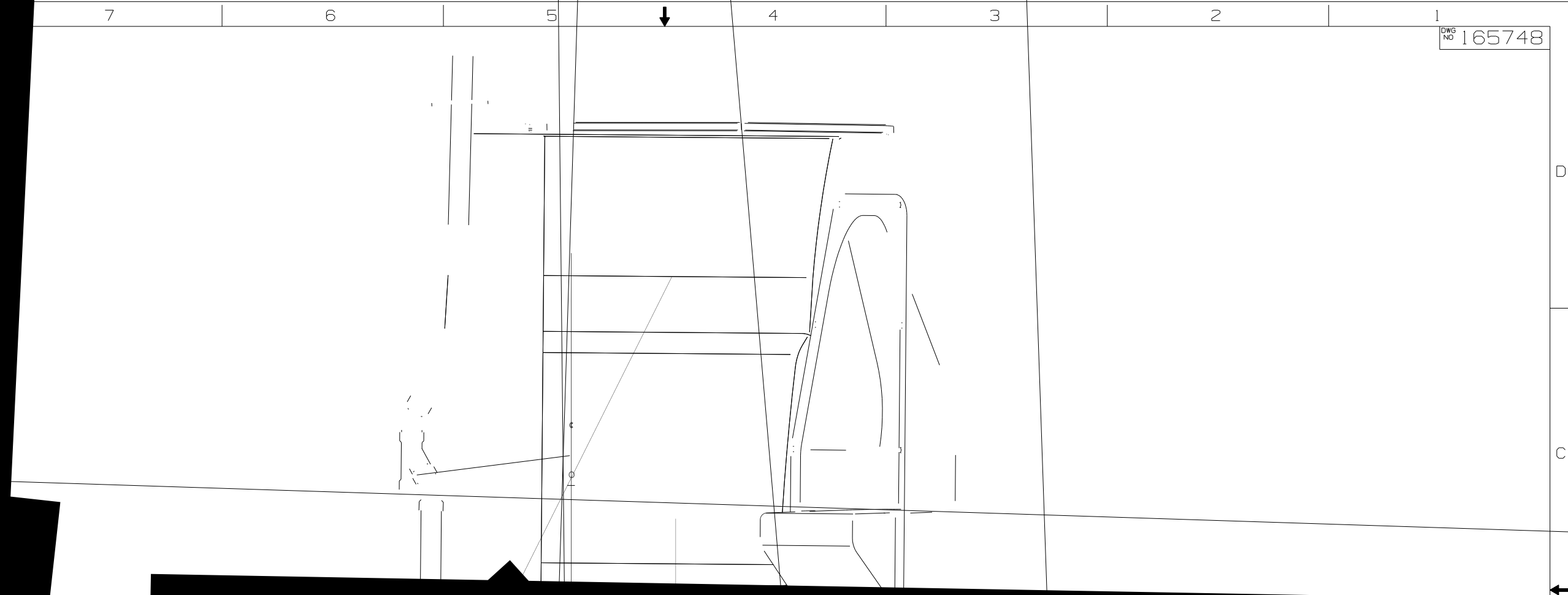
4

3

2

1

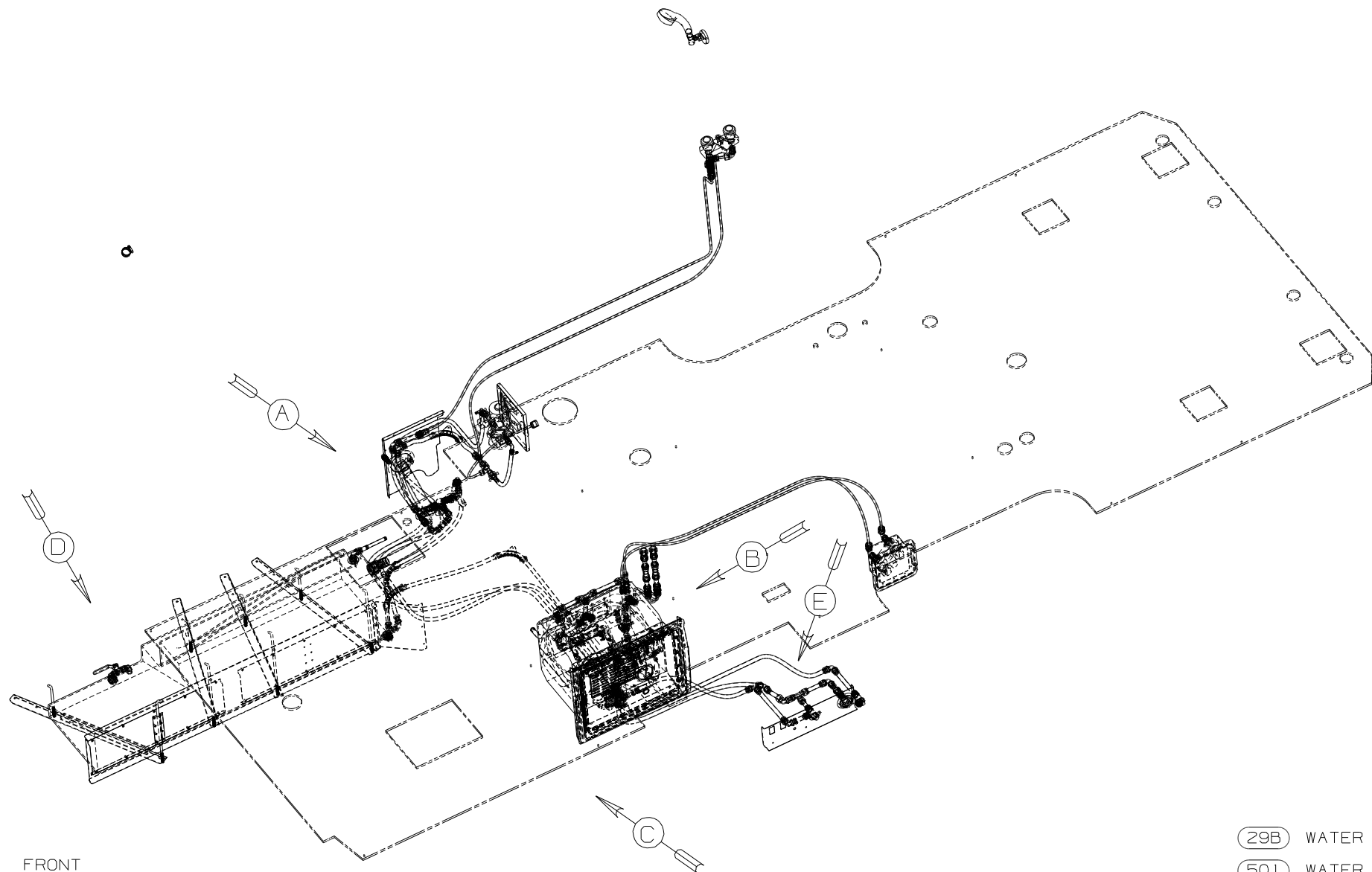
DWG NO 165748



D

C





FRONT OF COACH

- (29B) WATER PURIFIER
- (501) WATER PURIFIER WITHOUT
- (53F) WATER HEATER-ELEC IGNITION
- (53B) WTR HTR-6 GAL ELEC/LP/GAS

- NOTES:
- △6 ADD TEFLON TAPE 10405-03-000.
  - △5 ADD TEFLON TAPE 10405-02-000.
  - △4 ADD TEFLON TAPE 10405-01-000.
  - 3. ALL TUBING TO BE SECURED AT 1200 INTERVALS MAXIMUM WITH CLAMP 10495-01-000 AND SCREW G67-10-12B OR EQUIVALENT.
  - 2. TUBING TO BE INSTALLED WITH SUFFICIENT SLOPE TO PROVIDE DRAINAGE TO NEAREST VALVE.
  - 1. PLASTIC FITTINGS TO BE SEALED WITH SEALANT 84456-01-000.

|                              |                   |   |        |
|------------------------------|-------------------|---|--------|
| <b>WINNEBAGO</b>             |                   | COPYRIGHT 2009<br>WINNEBAGO<br>INDUSTRIES, INC. |        |
| DFTR                         | ORIG. DATE        | ALL DIMENSIONS ARE<br>IN MILLIMETERS            |        |
| CHKR                         |                   | FIRST USED                                      |        |
| P.E.                         |                   | 09 BV1170                                       |        |
| M.E.                         |                   | UNSPECIFIED TOLERANCES ARE:                     |        |
| DSNR                         |                   | MATERIAL:                                       |        |
|                              |                   | WHOLE DIM (X)                                   | : 3    |
|                              |                   | ONE-PLACE (X.X)                                 | : 1.5  |
|                              |                   | TWO-PLACE (X.XX)                                | : 0.50 |
|                              |                   | ANGLE   | : 1°   |
| THIRD ANGLE<br>PROJECTION    |                   | DO NOT SCALE DRAWING                            |        |
| TITLE:<br>WATER SYSTEM INSTL |                   |   |        |
| SHEET 1 OF 4                 | PART NO<br>165751 | REV   |        |
| REF                          | 1 4/15/2009       |   |        |

(X-X)  
FOR  
WATER  
CALLOUTS  
SEE DWG NO  
116230-01-000

SHOWER HEAD-W/HOSE & BRKT  
129390-04-CHT

SHOWER-EXTERIOR  
166291-01-CHT  
HOSE ASM-W/SPRAYER  
166291-02-000

FAUCET-LAV  
148886-02-CHT  
GASKET-FAUCET  
91253-01-000

VALVE  
167737-01-000 (2)

WATER HEATER  
51391-03-000 (53F)  
145541-02-000 (53B)  
DOOR  
125420-06-CHT  
CABLE  
76767-03-000  
SCREW  
639-10-169 (16)  
FLANGE-WATER HEATER  
166386-01-CHT  
ADAPTER-BRASS  
136333-01-000

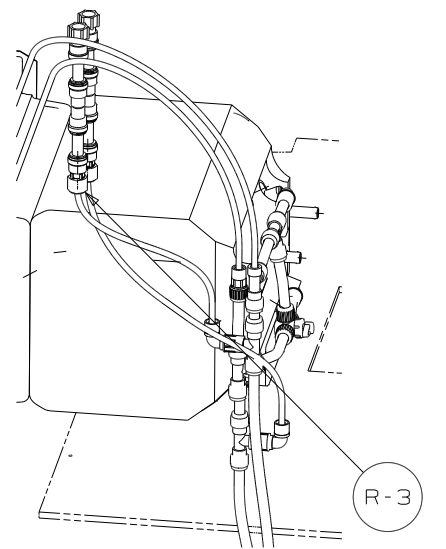
PANEL-WATER PUMP  
149477-02-CHT  
SCREW  
G39-08-16U (4)  
FOAM  
140364-01-CHT  
SCREW  
G39-08-24U (4)

TO TOILET

WASHER-PLASTIC  
87080-14-CHT

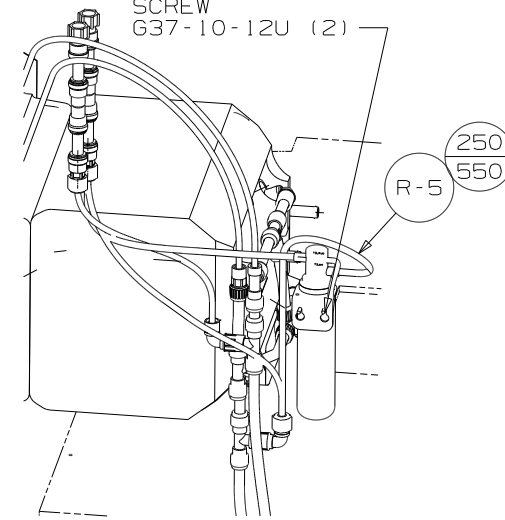
PANEL  
166584-01-CHT  
SCREW  
G67-10-10U (6)

FILL-GRAVITY  
166288-01-CHT



VIEW B  
(501)

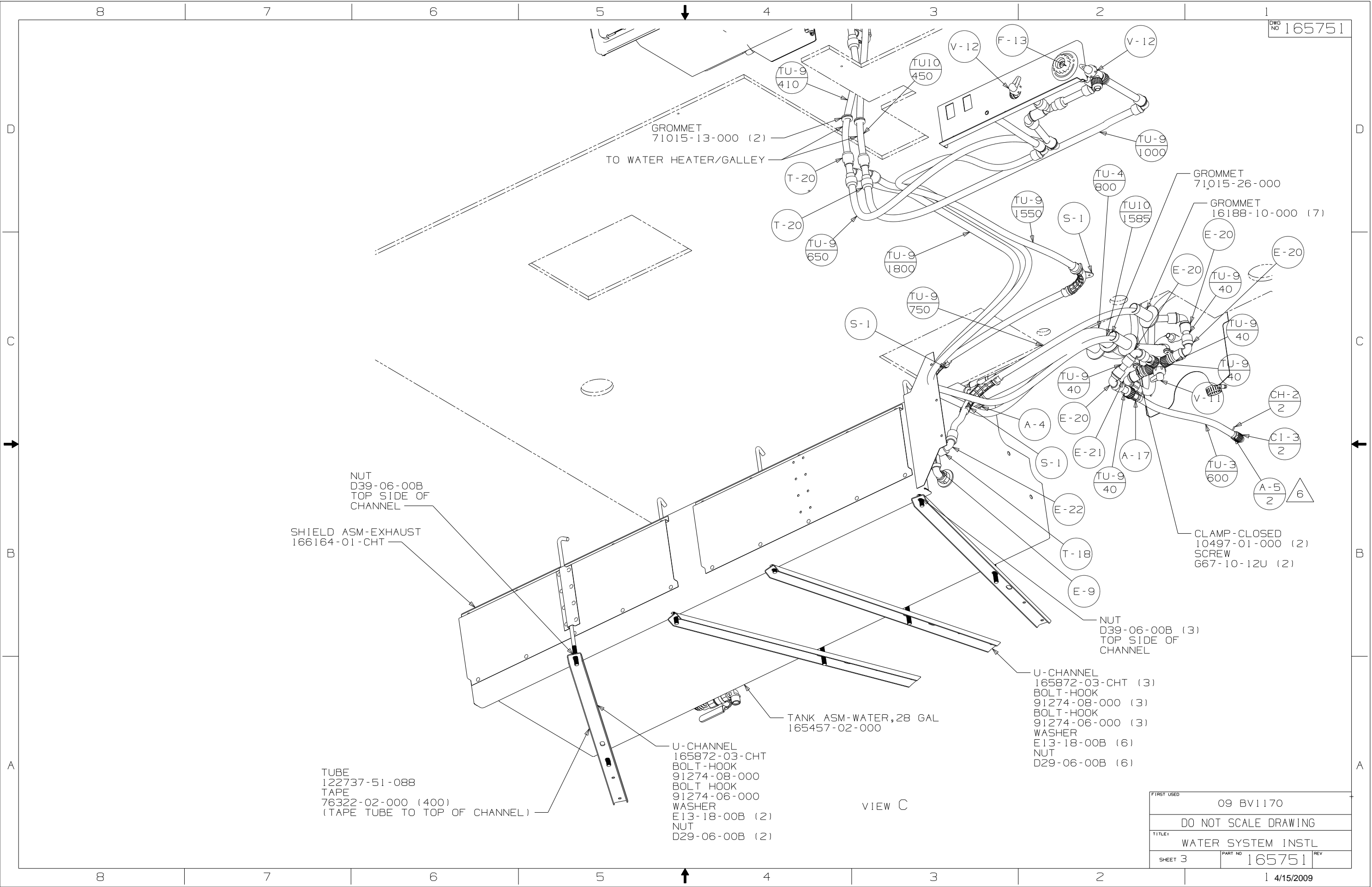
FILTER KIT KIT  
160946-03-000  
SCREW  
G37-10-12U (2)



VIEW B  
(29B)

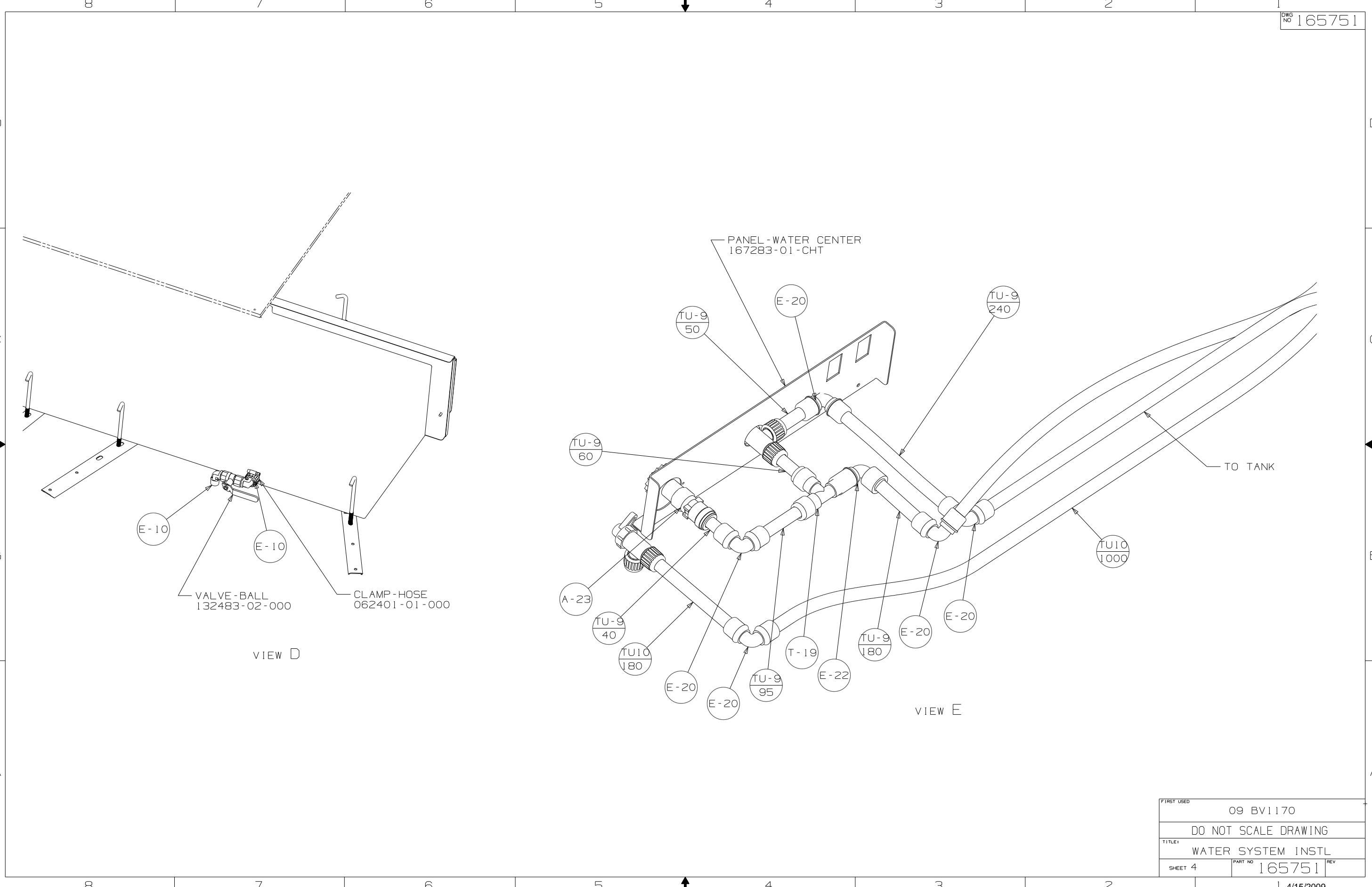
VIEW A

|            |                      |        |     |
|------------|----------------------|--------|-----|
| FIRST USED | 09 BV1170            |        |     |
| TITLE      | DO NOT SCALE DRAWING |        |     |
| TITLE      | WATER SYSTEM INSTL   |        |     |
| SHEET 2    | PART NO              | 165751 | REV |



|            |                      |        |
|------------|----------------------|--------|
| FIRST USED | 09 BV1170            |        |
| TITLE:     | DO NOT SCALE DRAWING |        |
| TITLE:     | WATER SYSTEM INSTL   |        |
| SHEET 3    | PART NO              | 165751 |
| REV        |                      |        |





E-10

E-10

VALVE-BALL  
132483-02-000

CLAMP-HOSE  
062401-01-000

VIEW D

PANEL-WATER CENTER  
167283-01-CHT

TU-9  
60

TU-9  
50

E-20

TU-9  
240

TO TANK

TU10  
1000

A-23

TU-9  
40

TU10  
180

E-20

E-20

TU-9  
95

T-19

E-22

TU-9  
180

E-20

E-20

VIEW E

|             |                      |        |     |
|-------------|----------------------|--------|-----|
| FIRST USED  | 09 BV1170            |        |     |
| TITLE       | DO NOT SCALE DRAWING |        |     |
| TITLE       | WATER SYSTEM INSTL   |        |     |
| SHEET 4     | PART NO              | 165751 | REV |
| I 4/15/2009 |                      |        |     |