

Sightseer

WINNEBAGO



Why Sightseer?

- Powered patio awning with LED lighting and metal wrap
- One-piece fiberglass roof
- Corian® galley countertops, sink covers, and decorative backplash
- Versa easy-swivel driver's seat
- Available exterior entertainment center
- Available powered StudioLoft™ bed
- Motoraid supplemental hot water and heating system
- Residential refrigerator with icemaker (36Z)
- AM/FM/touch screen radio with CD/DVD player
- Dash workstation with USB cable connection
- Automatic hydraulic leveling jacks with 3-position controls



On the Cover: 33C Ember Full-Body Paint

33C Grayson with Coffee-Glazed Vienna Maple Cabinetry

See it All

There's a lot to love about the Winnebago Sightseer®, starting with its quality Winnebago construction and thoughtfully-selected upscale features such as Corian® galley countertops, Versa easy-swivel driver's seat, and MCD solar/blackout roller shades. The new, triple-slideout 36Z features a master and a guest bathroom, a retractable HDTV, and the available powered StudioLoft™ to quickly

expand your sleeping space. The 33C and 35G also feature triple-slideout designs and come with a variety of options such as the Rest Easy® sofa (NA 35G), a Euro recliner, a king bed, and a washer/dryer so you can customize the coach to your preference. If you have your sights set on daytime adventures and relaxing evenings, don't miss the Winnebago Sightseer.



Recognized Quality

The Recreation Vehicle Dealer Association annually rates RV manufacturers and awards the Quality Circle Award to manufacturers that provide exceptional products, service and support. Winnebago Industries is proud to be the only manufacturer that has received this award every year since its inception.



W 33C Grayson with Coffee-Glazed Vienna Maple Cabinetry

The Sightseer takes relaxation seriously, offering a wide range of furniture options fashioned in soft Primera® fabric. The innovative Glide & Dine dining table in the 33C slides side-to-side to accommodate a variety of activities. The inLounge™ in the 35G steals the show with its ability to extend to add seating for guests and function as an elegant dining area with the movable inTable.™ Other seating options include the Rest Easy® sofa (NA 35G), a Euro recliner, and swivel cab seats, which can be positioned to face the large HDTV. At the end of the day, the available StudioLoft™ bed lowers from the ceiling at the press of a button, providing an instant sleeping space for you or your guests.



33C Glide & Dine



33C Glide & Dine with Retractable HDTV



33C Glide & Dine as Desk



33C Glide & Dine



33C Available StudioLoft Bed with Ladder



33C Swivel Cab Seats



33C Rest Easy Sofa



MCD Blackout Roller Shades



33C Retractable HDTV



33C Recliner



OnePlace Systems Monitor



33C Rest Easy Sofa as Bed

A 3-burner range top, microwave/convection oven, and a large Corian countertop with matching sink covers provide you with all the essentials for home-cooked meals. With a 4-door refrigerator/freezer (33C and 35G) or a 2-door residential refrigerator/freezer (36Z), you'll have enough food storage to satisfy even the hungriest of families.



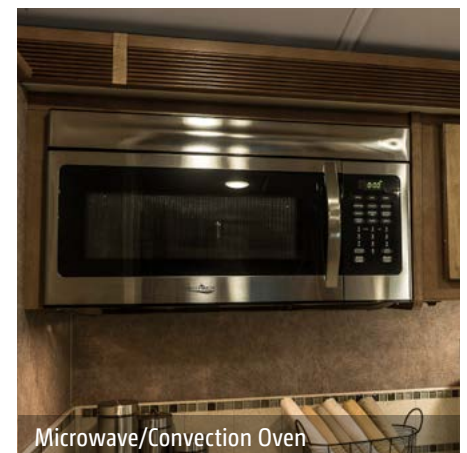
33C Galley



33C Flip-Up Countertop Extension



Corian Sink Covers



Microwave/Convection Oven



33C Pantry



33C Pantry with Pull-Out Shelves



33C 4-Door Refrigerator/Freezer Open



3-Burner Range Top



3-Burner Range Top Cover



Full-Extension Drawer Slides



33C Bedroom

Sleep comes easily when you select the right bed. In the Sightseer, you can choose a king or queen innerspring mattress (NA 35G) or an Ideal Rest® Nouveau™ digital comfort control mattress. A powered bed comes standard in the 35G so you're always comfortable, whether you're sleeping, reading, or watching the bedroom HDTV.



33C Wardrobe



33C Bedroom HDTV



33C Shower



33C Bathroom

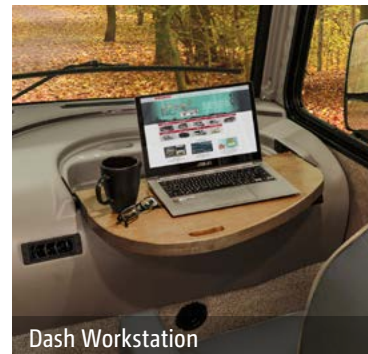


Dash

Even the longest days on the road fly by when you're seated in the 6-way power adjustable driver's seat with Primera covering. It swivels, along with the passenger seat, to be used as a lounge chair when you reach your destination. The innovative dash stereo system allows you to play music directly from your phone. It has a 6-inch color touch screen that doubles as your rearview monitor.



Radio with Available SiriusXM



Dash Workstation



MCD Solar/Blackout Powered Front Shade

Night or day, the Sightseer enhances your time outdoors with a powered patio awning with LED lighting and an available exterior entertainment center with an HDTV. Convenient features such as single-paddle compartment door latches and 3-position hydraulic leveling controls get you set up at the campsite in no time.



33C Powered Patio Awning



Automatic Entrance Door Steps



Awning LED Lighting



Stylized Aluminum Wheel



Powered Mirror with Defrost



Available Exterior Entertainment Center



Exterior Rear Storage



Exterior Storage Compartment



Exterior Wash Station



Exterior Service Center

Fiberglass Roof

The crowned, one-piece fiberglass roof is backed by a 10-year limited parts-and-labor roof skin warranty.

Rubber Can't Cut It

Rubber roofs used by competitors can streak and degrade over time.

Thermo-Panel® Sidewalls

By layering fiberglass and high-density block foam insulation with welded aluminum support structures, we create some of the industry's strongest, most durable and lightweight sidewalls.

E-Coating An electrodeposition coating helps protect critical steel components.

Embedded Steel Metal substructures embedded into the sidewall provide solid attachment points to keep cabinets and appliances mounted securely in place.

Solid Framework Aluminum extruded in our own facility to our exacting standards creates an extremely strong and solid structural framework.

Laser-Cut Tubing

Precision laser cutters create precise joints in structural steel that are stronger and require less welding.



Interlocking Joints

Specially engineered interlocking joints connect the floor, sidewalls and roof where competitors often rely on simple screws to bear the weight.



SUPER STRUCTURE

BUILT TO LAST

Every coach—from our smallest Class C to our largest diesel-pusher model—is built to Winnebago's® legendary SuperStructure® construction design. It's a process developed and refined over more than 50 years of building some of the strongest, most durable coaches in the industry.

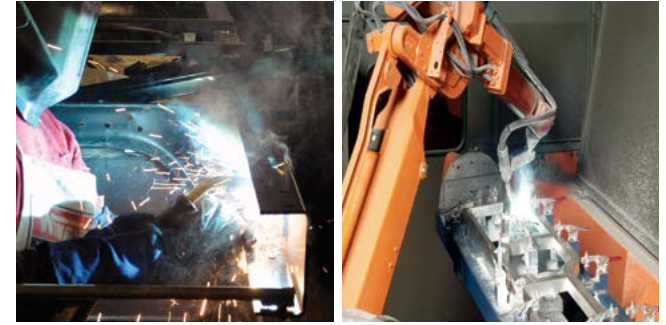
TESTING Before rolling out of our factories, every coach undergoes an extensive 113-point inspection. Each coach also passes a high-pressure water test that simulates rain at a rate of 50-inches per hour to check for leaks. During the design process, our computer simulations, physical testing center, and rigorous test track ensure each model is built to last.



DETAILS At Winnebago, we treat the features you can't see with the same care as the ones you can. Look in the access panels of some of our competitors' coaches and you'll see loose insulation and wires haphazardly strewn about. Winnebago maintains a clean fit and finish throughout so your coach will last for the long haul.



BUILT IN-HOUSE We process and finish key aluminum parts. We rotocast our own plastic components. In fact, we manufacture most of our own parts so they are designed to fit the space, rather than fitting the space to an awkward off-the-shelf component size.

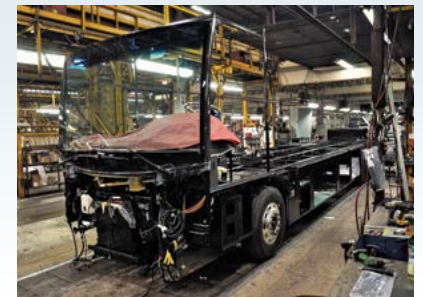


**SUPER
STRUCTURE**
BUILT TO LAST

Visit BetterBuiltRVs.com to gain real insight into what goes into a Winnebago motorhome.

TAKE A TOUR We're proud of our processes, state-of-the-art facilities, and the people who make Winnebago number one. We invite you to visit our complex in Forest City, Iowa, for a firsthand look at the dedication and technology behind every motorhome we build.

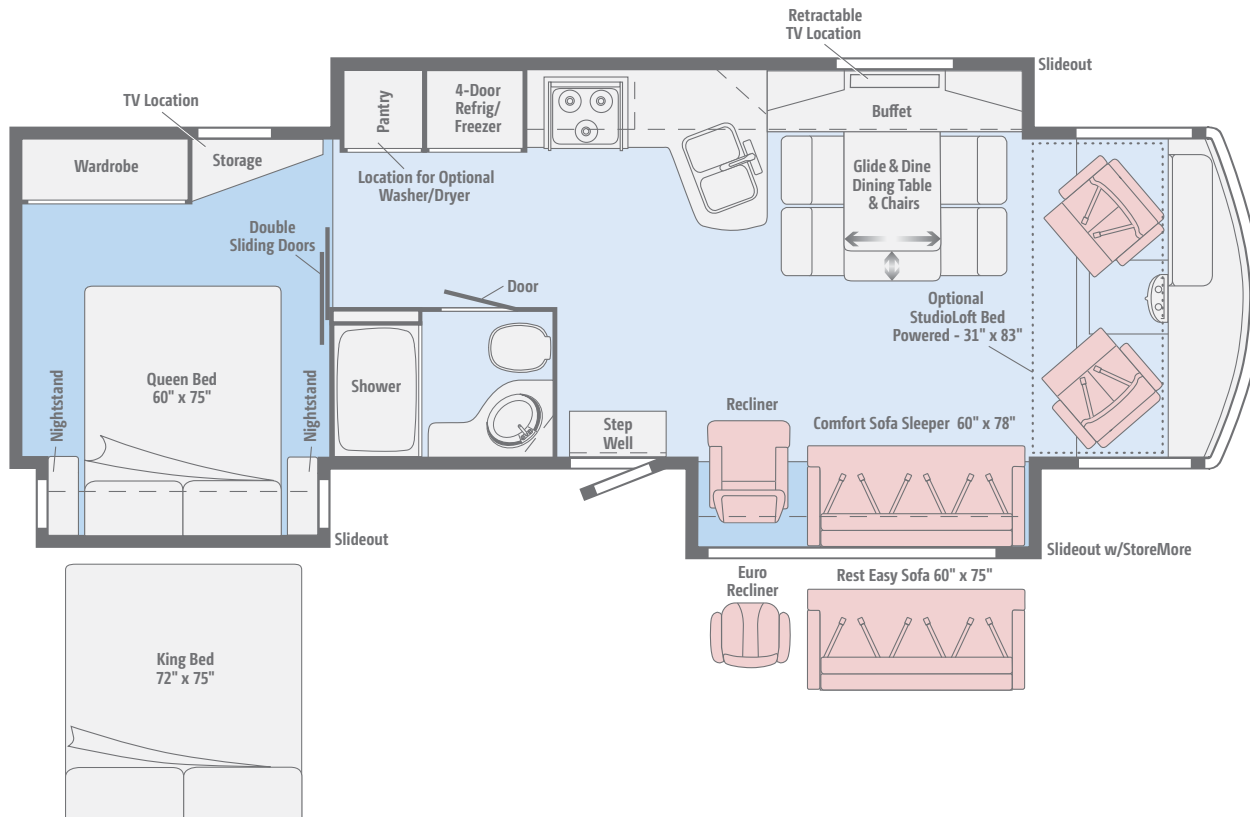
Call (641) 585-6936 or (800) 643-4892 or visit us online at Winnebagolnd.com/company/visit for more information.



Click here to explore this floorplan's web page.

33C

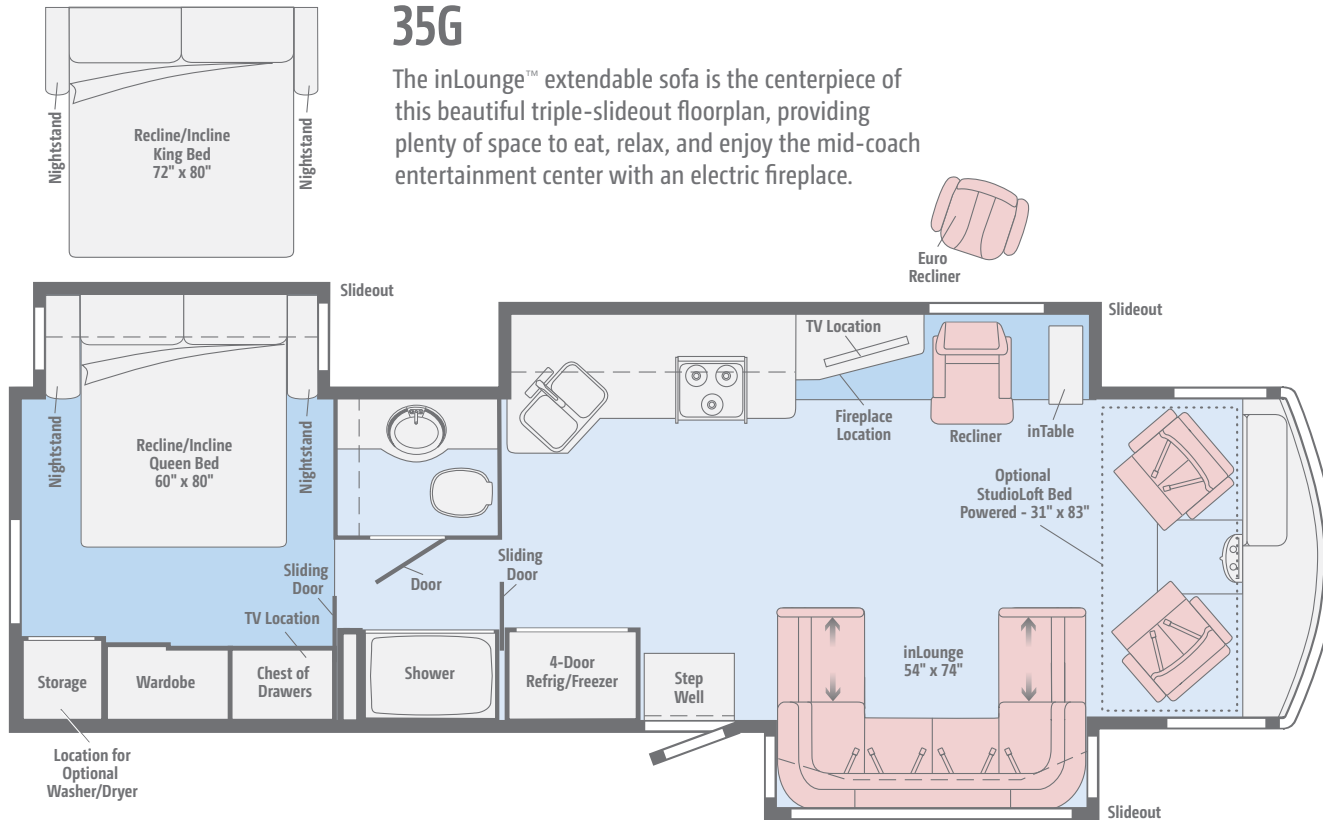
Three slideouts create a generous living space with plenty of floorplan flexibility. Your lounging options include a Rest Easy® sofa, Euro recliner, and the Glide & Dine dining table and buffet with retractable HDTV. A stacked washer/dryer is also available.



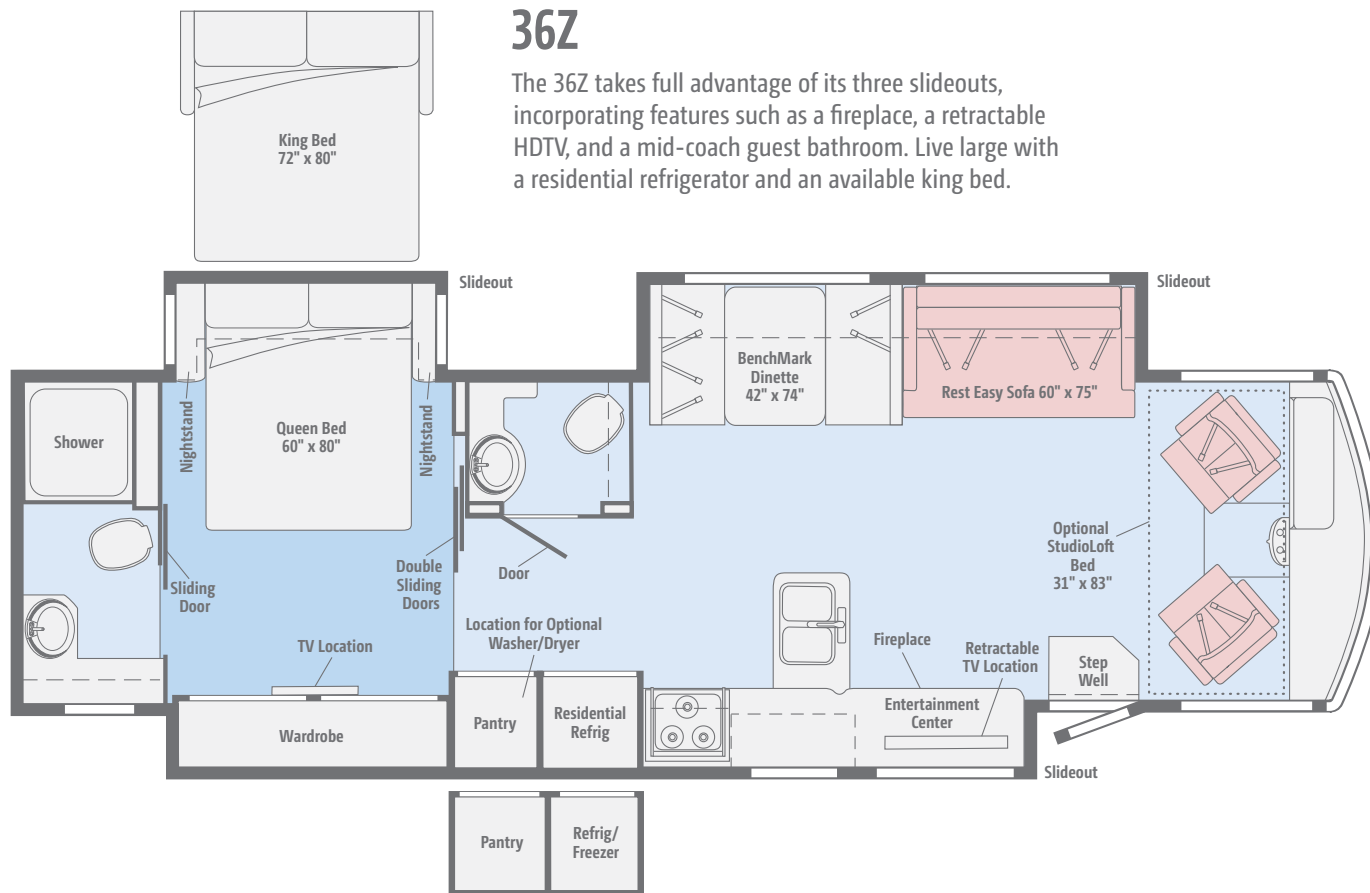
[Click here to explore this floorplan's web page.](#)

35G

The inLounge™ extendable sofa is the centerpiece of this beautiful triple-slideout floorplan, providing plenty of space to eat, relax, and enjoy the mid-coach entertainment center with an electric fireplace.



[Click here to explore this floorplan's web page.](#)



36Z

The 36Z takes full advantage of its three slideouts, incorporating features such as a fireplace, a retractable HDTV, and a mid-coach guest bathroom. Live large with a residential refrigerator and an available king bed.

Primera	Carpet	Vinyl

Choose from two fabric collections and three wood finishes.

Fracture



Primera



Feature Fabric



Bedspread



Corian Countertop
(Galley)



Vinyl Flooring



Honey Cherry



Coffee-Glazed Vienna Maple
(Upgrade)



Glazed Driftwood
(Upgrade)

Winnebago® reserves the right to change décor materials and specifications without notice or obligation.

Choose from two fabric collections and three wood finishes.

Mountain View



Primera



Feature Fabric



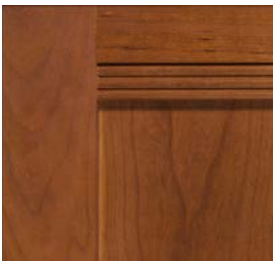
Bedsread



Corian Countertop
(Galley)



Vinyl Flooring



Honey Cherry



Coffee-Glazed Vienna Maple
(Upgrade)



Glazed Driftwood
(Upgrade)

Winnebago® reserves the right to change décor materials and specifications without notice or obligation.

Choose from four stylish full-body paint selections.



Black Garnet
FULL-BODY PAINT



Cream
FULL-BODY PAINT

Choose from four stylish full-body paint selections.



Cloud
FULL-BODY PAINT



Ember
FULL-BODY PAINT

Weights & Measures	33C	35G	36Z
Length	34'4"	36'2"	37'2"
Exterior Height ¹	12'5"	12'4"	12'4"
Exterior Width ²	8'5.5"	8'5.5"	8'5.5"
Exterior Storage ³ (cu. ft.)	104	115.8	122.2
Awning Length	19'	18'	20'
Interior Height	6'8"	6'8"	6'8"
Interior Width	8'0.5"	8'0.5"	8'0.5"
Freshwater Tank Capacity ⁴ (gal.)	73	80	83
Water Heater Capacity (gal.)	10	10	10
Holding Tank Capacity - Black/Gray ⁴ (gal.)	39/60	38/50	33/41 & 47/44*
LP Capacity ⁵ (gal.)	18	18	18
Fuel Capacity (gal.)	80	80	80
GCWR ⁶ (lbs.)	26,000	26,000	26,000
GVWR (lbs.)	22,000	22,000	22,000
GAWR - Front (lbs.)	8,000	8,000	8,000
GAWR - Rear (lbs.)	15,000	15,000	15,000
Wheelbase	220"	228"	242"
Seating Capacity	5	5	7

* The 36Z uses separate black and gray tanks for each bathroom

Ford® F53 Chassis

6.8L Triton® V10 SEFI engine, TorqShift™ 6-speed automatic transmission w/tow/haul, Hydro-Max power brakes, 4-wheel ABS, 175-amp. alternator

7-pin trailer wiring

Trailer Hitch⁶ 5,000-lb. drawbar/500-lb. maximum vertical tongue weight

Automatic hydraulic leveling jacks w/3-position controls

Stylized aluminum wheels

OPTIONAL EQUIPMENT

Rear inner dual valve stem extensions



Ford® F53 Chassis

Cab Conveniences

Cab seats hinged armrests, fixed lumbar support, and multi-adjustable slide/recline/swivel

6-way power driver seat

3-point seat belts

Radio/Rearview Monitor System DVD receiver with 6.2" LCD color touch screen, handheld remote, iPod®/MP3 input, rear color camera, Bluetooth®, SiriusXM®-ready, Spotify®, AppRadio One

Chassis/house battery radio power switch

Power steering w/tilt wheel

Cruise control

Power mirrors w/defrost and sideview cameras

Map lights

MCD solar/blackout powered front shade

Solar shades and privacy curtains for driver and passenger windows

Defroster fans

Dash workstation w/USB and 12-volt powerpoint

Passenger-side curb view dual-pane window

OPTIONAL EQUIPMENT

Passenger seat w/footrest

SiriusXM™ receiver (subscription not included), remote

Interior

Glide & Dine table/buffet/chairs w/retractable 48" HDTV (33C)

48" HDTV (35G, 36Z)

Amplified digital HDTV antenna system

Electric fireplace (35G, 36Z)

LED ceiling lights

Satellite system ready (lounge and bedroom)

Soft vinyl ceiling

MCD solar/blackout roller shades (on select windows)

OnePlace® systems center

Tinted, dual-pane windows

Powered ventilator fan (bedroom 35G, 36Z)

Powered ventilator fan (lounge)

Powered roof vent (bath(s))

Video selection system

Washer/dryer prep (33C, 35G)

OPTIONAL EQUIPMENT

Powered StudioLoft™ ladder, dome LED lights

Stackable washer/dryer (33C, 35G)

Winegard® Mission® automatic satellite TV antenna system

Home Theater Sound System amplifier, DVD player, receiver, speakers, and subwoofer

Vinyl floor throughout

Galley

Corian® solid-surface countertop, decorative backsplash, and sink covers

Microwave/convection oven w/vented range fan (touch control)

3-burner range top w/cover and storage below

Flip-up countertop extension (33C)

2-door residential refrigerator/freezer w/icemaker (36Z)

4-door refrigerator/freezer w/icemaker (33C, 35G)

OPTIONAL EQUIPMENT

3-burner range w/cover and oven

Large-capacity 2-door refrigerator/freezer w/icemaker, water filter, 4 Group 31 batteries (36Z)

Bath

Flexible showerhead

Textured glass shower door

Skylight

Porcelain toilet w/foot pedal and sprayer

Water pump switch(es)

Medicine cabinet

Wall mirrors (35G, 36Z)

Assist bar (36Z)

Bedroom

Queen bed w/innerspring mattress and storage below (33C, 36Z)

Powered queen bed w/Ideal Rest® Nouveau digital comfort control mattress w/remotes (35G)

Headboard

Bedsread, pillows, and shams

28" HDTV (33C, 35G)

32" HDTV (36Z)

OPTIONAL EQUIPMENT

Powered king bed w/Ideal Rest Nouveau digital comfort control mattress w/remotes (35G)

King Ideal Rest Nouveau digital comfort control mattress w/remotes (33C, 36Z)

King bed w/innerspring mattress and storage below (33C, 36Z)

Queen Ideal Rest Nouveau digital comfort control mattress w/remotes (33C, 36Z)

Exterior

Automatic entrance door steps

Porch light (33C, 35G)

Lighted storage compartments

Premium high-gloss fiberglass skin

KeyOne™ lock system

Front mud flaps

Ladder

Powered patio awning w/LED lighting and metal wrap

Powered entrance awning w/LED lighting (36Z)

Lower front protective mask

OPTIONAL EQUIPMENT

Entertainment Center 32" HDTV w/adjustable bracket, AM/FM stereo, CD player, remote, 2 speakers

Heating & Cooling System

2 high-efficiency air conditioner heat pumps w/Energy Management System w/ChillGrille™

35,000 BTU low-profile ducted furnace (33C)

40,000 BTU low-profile ducted furnace (35G, 36Z)

Electrical System

AC/DC electrical distribution system

45-amp. converter/charger (33C, 35G)

50-amp. power cord

5,500-watt Cummins Onan® Marquis Gold™ gas generator

Automatic generator start system (36Z)

Generator/shoreline automatic changeover switch

2 deep-cycle, Group 31 Marine/RV batteries (33C, 35G)

4 deep-cycle, Group 31 Marine/RV batteries (36Z)

Battery disconnect systems (coach and chassis)

PowerLine® Energy Management System

Automatic dual-battery charge control

Auxiliary start circuit

Exterior antenna jack and AC duplex receptacle

1,000-watt inverter (33C, 35G)

2,000-watt inverter/charger (36Z)

Cable TV input

Portable satellite dish hookup

Plumbing System

Service center color-coded labels, pressurized city water hookup w/diverter valve, drainage valves, 10' sewer hose, QuickPort® service connection hatch, exterior wash station w/lighted pump switch

Permanent-mount LP tank w/gauge

On-demand water pump

TrueLevel™ holding tank monitoring system

Winterization Package water heater bypass valve and siphon tube

Heated holding tank compartment

10-gallon 110-volt/LP water heater w/motoraid/ auto heater

Gravity water tank fill w/lockable door

Holding tank flushing system (black tank only)

LPG accessory connection (patio area)

Safety

Child seat tether anchor in forward-facing dinette seat (36Z)

LP, smoke, and carbon monoxide detectors

10 BC fire extinguisher

Ground fault interrupter

High-mount brake lamp

Fog lamps

Warranty⁷

12-month/15,000-mile basic limited warranty⁸

36-month/36,000-mile limited warranty on structure⁸

10-year limited parts-and-labor warranty on roof skin⁸

FOOTNOTES

- The height of each model is measured to the top of the tallest standard feature and is based on the curb weight of a typically equipped unit. The actual height of your vehicle may vary by several inches depending on chassis or equipment variations. Please check with your dealer for further information.
- Floorplans feature a wide-body design - over 96" In making your purchase decision, you should be aware that some states restrict access on some or all state roads to 96" in body width. Before making your purchase decision, you should confirm the road usage laws in the states of interest to you.
- The load capacity of your motorhome is designated by weight, not by volume, so you cannot necessarily use all available space when loading your motorhome.
- Capacities are based on measurements prior to tank installation. Slight capacity variations can result due to installation applications.
- Capacities shown are tank manufacturer's listed water capacity (W.C.). Actual filled LP capacity is 80% of listing due to overfilling prevention device on tank.
- Actual towing capacity is dependent on your particular loading and towing circumstances which includes the GVWR, GAWR, and GCWR as well as adequate trailer brakes. Please refer to the Operator's Manual of your vehicle for further towing information.
- See separate chassis warranty.
- See your dealer for complete warranty information.

NA Not Available

Not all items available in combination. See dealer for details.

Winnebago's® continuing program of product improvement makes specifications, equipment, model availability, and prices subject to change without notice. Published content reflects the most current product information at time of printing. Please consult your dealer for individual vehicle features and specifications.



Let us host
your next

Adventure



WGOAdventures.com



Show your Winnebago love
with high-quality gifts and wearables.



Apparel | Gifts | Parts | Gear

WinnebagoOutdoor.com

Find your style



Connect with Winnebago (Click one of the following)



Like us



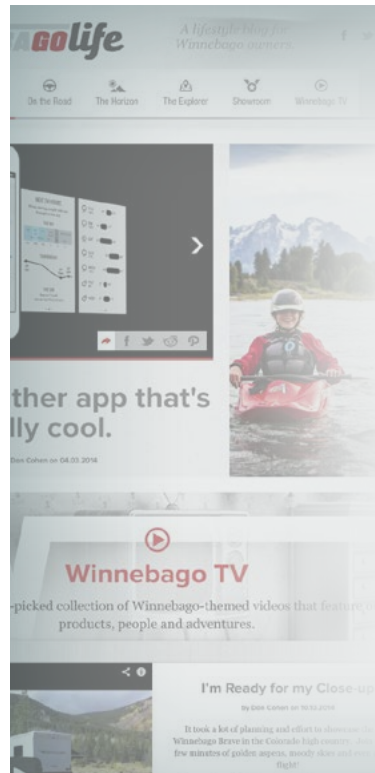
Follow us



Watch us

WinnebagoInd.com Has All The Answers

Visit WinnebagoInd.com on your computer, smartphone, or tablet for the latest product information and updates.



Welcome to GoLife!

Visit our lifestyle blog for motorhome news, personal travelogues, and community stories.

WinnebagoLife.com

GoLife

PREFERRED CARE PROGRAM

We back our motorhomes with best-in-class support both before and after the sale:

- 12-month/15,000-mile basic limited warranty
 - 36-month/36,000-mile limited warranty on structure
 - 10-year limited parts-and-labor warranty on fiberglass roof
 - Complimentary 24-hour roadside assistance program
- TripSaver® Fast Track Parts guarantees that in-stock warranty parts ship directly to your dealer within 24 hours
 - National dealer service network



For more information:
WGOService.com



From RV to personal insurance, Winnebago RV Insurance can provide all the coverage and services you need to feel at home on the road.

For more information:
(800) 642-4892



CONTACT US

GENERAL INQUIRIES

Corporate Switchboard
(641) 585-3535

CURRENT PRODUCT OWNER AND SERVICE-RELATED INQUIRIES

(800) 537-1885
or winnebagoind.com

NEW VEHICLE SALES INQUIRIES

sales@winnebagoind.com

FAX

(641) 585-6966

POSTAL ADDRESS

Winnebago Industries, Inc.
P.O. Box 152
Forest City, IA 50436

STREET ADDRESS

Winnebago Industries, Inc.
605 West Crystal Lake Road
Forest City, IA 50436



Join the Club, Join the Fun

Here's the perfect way to begin your life on the road as the owner of a new Winnebago – by joining the exclusive WIT Club. Start your adventure with other fun-loving WIT Club members from across the country and get the most out of your new Winnebago motorhome.



Members enjoy:

- Caravans and rallies
- Newsletters
- Local and state group activities
- RV travel benefits

See more at
WITClub.com



Grand National Rally

Each year, thousands of Winnebago owners descend upon Forest City, Iowa. Rally-goers enjoy an unforgettable week reconnecting with friends, taking tours, participating in activities, and more. Join the adventure next July!