

1997

Adventurer

*Everyone needs
their own space.*

*Ours just happens
to be more generous
than most.*



34DQ



When you offer a slideout this successful, expansion takes on a whole new meaning.

In 1996 when we introduced our Adventurer slideouts, we never guessed they would become our best seller in less than a year. So naturally, we expanded this year's line to include even more features and improvements. The way we see it, when you buy a Class A motor home, you should get more for your money than a few extra square feet.

Space and beyond. Adventurer models range in length from 30 to 37 feet. Six of them are widebodies and five have slideouts. But more important than space, the Adventurer is full of big ideas. Take our slideouts, for example. We build room extensions so solid, they come with an exclusive three-year extended warranty. They're constructed on-site with special aluminum extrusions, which give

units additional strength. So all our widebodies feel solid and easy to handle (and hold their trade-in value), even after many miles.

Big ideas come in all sizes. This year

every Adventurer model has more space to offer. The 35WQ has a wider entrance door, the 37RW has a larger bath area and bedroom windows and bathroom skylights are larger on



35WQ. Choose from a variety of slideouts, including this widebody model, never before offered by Winnebago Industries.

all models. A larger microwave oven is standard equipment as well. And some models have new space-saving ideas, like a dinette table with self-storing leaf and a redesigned roll-out pantry.

When it comes to buying any motor home, it's the size of the ideas that go into it that count. So choose from our selection of roomy 1997 Adventurer models and see why they're widely successful.

We're spotlighting some of the details that set us apart.

As part of our ongoing improvement policy, we put our motor homes in a dark room, turn on only the interior lights and check the effectiveness of each for reading, cooking, watching TV, etc. Using what we learn, we add and reposition lighting where possible.



Opticlear lenses were installed on the lights under cabinets to shed more light where you read and work.



Courtesy lights with conveniently placed wall switches softly light the way when you're up and around in the dark.



EXIT



34DQ. This spacious slideout room is complemented by the upscale, contemporary look of our new White Granite cabinetry.



34WK. An overhead entertainment center adds to the luxury of this model. The cockpit features restyled driver and front passenger seats along with a smartly redesigned beverage tray.



35WQ. This efficient L-shaped galley comes with a 3-burner range, 1.3 cubic foot microwave and an available side-by-side refrigerator.



34RQ. The redesigned roll-out pantry has a locking slide system and adjustable shelves.



37RW. The larger bathroom comes with a glass shower door and additional lighting.



34RQ. The exterior vertical compartment includes pass-through storage that makes loading and unloading bulky items easier.



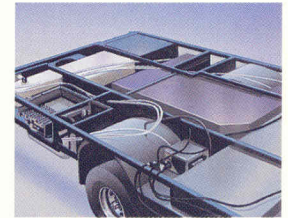
34WK. This storage compartment is one of two located in the trunk area. The second compartment, accessible from inside the unit, utilizes space under the bed.



37RW. An available washer/dryer makes cleaning clothes a snap.



A water pump switch conveniently located in the bathroom is a good example of small things that make a big difference.



Seamless holding tanks are made in our own rotocast facility. We fit them to specific spaces in the frame to improve balance and handling.



A larger bath area skylight offers more headroom than ever before. It also makes the best use of natural light, which is part of our overall lighting enhancement plan.



Our three-point seat belts connect directly to the seat frame in the cab and are bolted to the steel cab substructure. Always use your seat belt.



A third exterior brakelight is a safety feature most manufacturers only put on high-end models. We have one on all our motor homes.



Select appliances are secured with steel tie-downs, an exclusive Winnebago Industries safety feature. It's not something we're required to do. It just makes sense.

Some of its most impressive features are things

This unit's stylish exterior is accented by its new bright white body color.

Restyled driver's and front passenger's seats provide more comfort and support.

A satellite TV system is available, with or without a receiver, and all units are system ready (receiver not available in Canada).

A 24-ounce accumulator tank eliminates pump start and stop when small amounts of water are needed.

Our smooth, one-piece fiberglass skin is strong, easy to clean and free of exposed fasteners.

Not only will you find three-point shoulder and lap seat belts with retractors in the cab, lap seat belts are standard in selected areas of the coach as well.

New interior lighting enhancements include opticlear lenses on lights beneath upper cabinets plus courtesy lights along the floor.

Steel tie-downs that secure appliances are just one of our many safety features.

An automatic shoreline generator changeover switch is standard.

New rubber matting and a non-slip tread strip at the entrance step make getting in and out easier.

Computer simulated or physical drop testing, performed on various models, is unique to Winnebago Industries. This testing aids in evaluating structural integrity, panels/panel joints, appliance attachments and window/door operations.

We letter code our wiring every 3" to make service diagnosis easier and faster.

An Onan® Quiet Diesel generator is available on the 34WK pusher.



We conduct a final inspection of each unit to check all the dash functions, as well as the overall fit and finish.

We manufacture our own molded rear wheel wells which are non-corrosive and absorb sound better than metal.

A water test is conducted at the end of the assembly line to make sure each unit is watertight.

A computer evaluates every unit for wheel alignment and checks 75 chassis points to ensure proper handling.

you'll never see.

The one-piece fiberglass roof won't tear like rubber and comes with our standard 10-year limited parts and labor warranty, the only one in the industry.

Every unit comes with dampening directional vents ducted through the 3/4" thick roof to the available air conditioner(s).

Framework is extruded from billets in our aluminum products area. To maintain quality control, we make over 80% of everything that goes into our motor homes.

A Motoraid water heater and rear auto heater are standard on most models.

We developed Thermo-Panel® sidewall construction which combines light weight, structural integrity and durability.

As an added safety feature, upper cabinets are secured to metal plates in the sidewalls and roof.

To prevent leaks, windows are sealed with a non-hardening butyl sealant.

We look for materials that combine light weight and strength, like the welded aluminum framework. It's strong enough to pass a drop test, but its light weight increases fuel efficiency and weight-carrying capacity.

Block foam insulation increases R-value and decreases noise inside the coach.

Exterior compartments come with new full-hinged valance panels, several doors with gas strut supports and a single latch for easy opening. Doors are laminated, with smooth fiberglass skin on both sides of block foam insulation, for energy efficiency and sound absorption.

Our interlocking joint system connects the floor and walls to make a more durable, better-sealed body.

To prevent corrosion, we electrocoat all steel in the storage compartments.

The sub-floor in this basement model is aluminum skin on foam. It's mounted on a steel and aluminum frame, then secured directly to the steel chassis to provide an optimal balance of sound absorption and structural integrity.

We fasten the sidewall to the floor frame and cab using steel brackets that make the sidewalls more stable on the chassis.

The HWH® room extension mechanism carries a special extended three-year warranty, exclusive to Winnebago Industries-manufactured room extensions.

Slideout support rails are 6" deep, instead of the usual 4" on many competitors' models, minimizing deflection and eliminating the need for auxiliary room props.





Why do people buy our motor homes? Is it our warranty? Our nationwide dealer network? Or is it those WIT Club caravans? Socializing is an important part of motorhoming. And we don't know a more fun bunch of people than our Winnebago-Itasca Travelers (WIT) Club.



There are more than 250 chapters across the U.S.A. and Canada. Many members enjoy attending rallies and traveling together in caravans. A highlight of every summer is the Grand National Rally when thousands of members meet at our campground in Forest City.

In addition to social activities, WIT Club members enjoy many special benefits like professional trip planning, mail forwarding and discounts.

How well are our motor homes put together? Ask

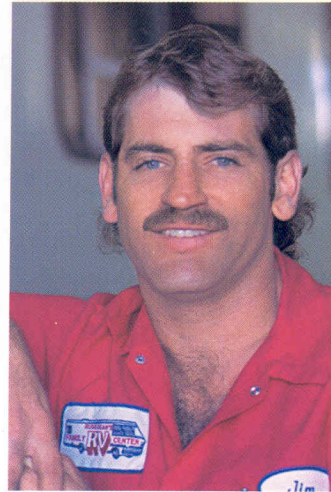
Since we come from a small town, we've always believed in the direct approach. When you want to find out something, go right to the source. And when you want to find out about a motor home, who better to ask than someone who works on them day in and day out?

Ask the service manager.

The service manager at your Winnebago Industries dealer has worked on a lot of different types of motor homes and is a wellspring of information. He'll be glad to share with you which motor homes are built the best. Which ones do service technicians find easiest to work on? (Remember, less labor means lower labor costs.) Which company has the most comprehensive warranty? And which motor homes would he recommend to a friend? We're confident Winnebago Industries is the name you'll hear most often.

Service training. Customers tell us the quality of dealer service has a big influence

on the owner's overall satisfaction with their motor home. To help keep that quality high, we conduct an ambitious training program in the field and at our Forest City plant. Throughout the year you'll find service technicians from all over the country attending week-long training sessions on such topics as 110-volt generator service, body repair and appliance service.



*"The best hands-on training I've seen."
— Service Technician Jim Bithell, Russ
Dean's Family RV Center, Pasco, WA.*

Parts availability. Of course, even an ace service technician's hands are tied if the parts he needs aren't available. So we've created an extensive warehousing and distribution system that carries parts for older models, too. According to our Parts Computer Network, 99.3% of our normal stock items are available whenever a dealer calls.

someone who takes them apart.

Warranty protection. We've always felt the best service policy is to keep the need for service to a minimum. That's why we build our motor homes better. And because we go the extra mile during manufacturing, we can back our motor homes with the strongest warranty in the industry. You could say our warranty starts where most others leave off. Because in addition to basic 12-month/15,000-mile coverage, we also have a 36-month/36,000-mile limited warranty on lamination. And our standard 10-year limited parts and labor warranty on the roof is exclusive in the industry.

Unlike most manufacturers, we also cover the appliances and equipment we install, so you can count on the convenience of one-stop service for warranty repairs. Expert service people are ready to help you at our many authorized dealers throughout the U.S. and Canada.

Preferred Care Program. Every new Winnebago Industries motor home comes with a one-year membership in our Preferred Care Program. This newly enhanced 24-hour nationwide assistance plan covers emergency dispatching for road service and towing, equipment service questions, service provider recommendations, service appointments and directions to service locations. Other free services include jump-starts, tire changing, fuel delivery and lockout assistance. A special



After the first year, membership in the Preferred Care Program can be extended by joining the WIT Club.

24-hour toll-free number connects you with a staff of experienced RV service professionals, backed by our network of more than 20,000 prequalified service providers.

The less you have to worry about, the more time you have for fun. And we'll do our best to give you a safe, enjoyable travel experience. At Winnebago, your peace of mind is worth the effort.



The Winnebago Motorsports Team puts racing fans on the inside track of the fastest growing sport in America. Members are invited to participate in special Pit Road Events, including driver autograph sessions, at selected NASCAR® Races throughout the season. Benefits also include a newsletter and special Motorsports merchandise.



At Winnebago Industries, we've been auto racing fans for years. We're the Official Motor Homes of NASCAR, and we're associated with several NHRA®



drag racing teams. If you'd like to join the

Winnebago Motorsports Team, just call us at 1-800-643-4892, ext. 2.

S Standard
O Optional

	30WQ	32WQ	34WK	34WA	35WQ	34WK-P	34RQ	34DQ	37RW
SLIDEOUT									
Slideout room (driver's side)* - approximately 13' long w/36" extension, switch located on instrument panel, mirror, wainscoting w/chair rail, cover							S	S	S
Overhead cabinet (queen bed)							S	O	S
Slideout room (driver's side)* - approximately 7'1" long w/20" extension, cover, overhead cabinet					O				
INTERIOR									
Carpeting w/pad - stain resistant, Ceiling lights, Courtesy lights	S	S	S	S	S	S	S	S	S
Ceiling vent - powered, bathroom	S	S	S	S	S	S	S	S	S
Ceiling vent - powered ventilator fan, galley, (lounge on 30WQ)	O	O	O	O	O	O	O	O	S
Ceiling vent* - non-powered, lounge, galley, bedroom	S	S	S	S	S	S	S	S	S
Clock - decorator style	S	S	S	S	S	S	S	S	S
Color themes - choice of Botanical (green), North Shore (taupe), Zephyr (blue)	S	S	S	S	S	S	S	S	S
Color themes - choice of Oakleaf (taupe) or Easton (sage)									S
Decorative overhead door exchange - exchanges mirrored doors to wood	O	O	O	O	O	O	O	O	O
Divider bi-fold door		S	S			S	S	S	
Divider hinged door			S						
Divider sliding door(s)	S	S	S	S	S	S	S	S	S
Lamp(s) - decorator style, in lounge		S	S	S	S	S	S	S	
Picture		S	S	S	S	S	S	S	
Storage - below couch	S	S	S	S	S	S	S	S	S
Wardrobe - mirrored door(s) (wood on DQ), carpeted floor, clothes rod, drawer(s) (NA on 30WQ & 32WQ), light, shelf (32WQ, 34WA, 37RW)	S	S	S	S	S	S	S	S	S
Washer/dryer combination*									O
Windows - tinted w/62% light transmittal	S	S	S	S	S	S	S	S	S
Windows* - dual glazed, thermo-insulated	O	O	O	O	O	O	O	O	O
GALLEY									
Coffee maker*	O	O	O	O	O	O	O	O	O
Decorative light - dinette							S	S	S
Flooring (vinyl)	S	S	S	S	S	S	S	S	S
Galley rail - countertop material	S	S	S	S	S	S	S	S	S
Hutch			S						
Microwave oven - touch control (microwave/convection 34DQ), Range hood - w/light, powered vent, Range w/large glass doored oven (oven NA 34DQ) - 3 burners (1 high-output) range cover, Refrigerator/freezer - large, double-door, Sink (double) - stainless steel, recessed w/countertop covers, single control faucet	S	S	S	S	S	S	S	S	S
Pantry - slideout w/adjustable shelves, locking		S	S	S	S	S	S	S	S
Refrigerator/freezer* - side-by-side w/icemaker		O	O	O	O	O	O	O	O
Refrigerator/freezer* - large, double-door w/icemaker		O	O	O	O	O	O	O	O
Spice rack			S						
Storage - below dinette seats	S	S	S	S	S	S	S	S	S
Table & chairs* (4)	O	O	O	O	O	O	O	O	O
Table & chairs (2)			S						
Water purification system	O	O	O	O	O	O	O	O	O
BEDROOM									
Bedsprad(s), pillows, pillow shams, throw pillow(s), Lamp(s)* - decorator style, wall-mounted, Mattress(es) - w/non-slip mat, access to storage below, gas springs, Padded fabric headboard, (34WK-P only)	S	S	S	S	S	S	S	S	S
Mirror - wall-mount						S			O
BATHROOM									
Flooring (vinyl)	S	S	S	S	S	S	S	S	S
Hamper - (located in bedroom on 34RQ, 34DQ, 37RW)	S	S	S			S	S	S	O
Hand rail/towel bar - (in shower)	S								
Lavatory cabinet	S	S	S	S	S	S	S	S	S
Linen cabinet*	S	S	S	S	S	S	S	S	S
Magazine rack				S					S
Makeup lights (3)-2 sets 37RW			S	S			S	S	S

S Standard
O Optional

	30WQ	32WQ	34WK	34WA	35WQ	34WK-P	34RQ	34DQ	37RW
Makeup lights (4)	S	S	S			S			
Medicine cabinet - mirror door					S				
Medicine cabinet - wood doors	S	S	S			S	S	S	S
Mirror - wall-mounted	S	S	S			S	S	S	S
Shower - flexible shower head				S			S	S	
Shower/tub - flexible shower head (fixed on 35WQ & 37RW) (seat in 30WQ)	S	S	S			S	S	S	S
Shower door - (glass)	S				S				S
Shower door - (pleated)		S	S	S		S	S	S	S
Sink - oval w/ledge back	S	S	S		S		S	S	S
Sink - rectangular, molded soap dishes				S			S	S	
Skylight, Tissue holder, Toilet w/sprayer & foot pedal - porcelain	S	S	S	S	S	S	S	S	S
Towel bar(s)	S				S				S
Towel rack built into bath door, 3 rods	S	S	S	S		S	S	S	S
Towel ring	S	S	S	S		S	S	S	S
EXTERIOR									
Awning*	O	O	O	O	O	O	O	O	O
Awning rail, Bumpers - rustproof, front: steel reinforced, rear: formed aluminum w/end caps, Entrance door w/screen door - latch & deadbolt locks, Electric step w/door jamb switch, New graphics, Holding tanks (heated compartment), Ladder, Mud flaps - rear, Outlet - 110-V, curbside, Porch light - interior switch, Sewer hose & lighted storage compartment, Wash station - w/water pump switch, Storage compartments - heated rear compartment (NA 34WA), gas struts on several, single paddle latch, lights, Tire tools - wrench, leverage bar, tire hoist rod, Trailer towing package - w/Class II hitch, Trailer wiring extension	S	S	S	S	S	S	S	S	S
Trunk - (NA w/twin bed option)	S	S	S		S				
Undercoating*	O	O	O	O	O	O	O	O	O
Water fill door - lockable, Water system drain	S	S	S	S	S	S	S	S	S
Wheel covers	S	S	S	S	S	S	S	S	S
Wheel liners - stainless steel	O	O	O	O	O	O	O	O	O
SYSTEMS									
Air conditioning pre-wiring - roof	S	S	S	S	S	S	S	S	S
Air-conditioner - roof, 15,000-BTU	O								
Air-conditioners - roof, front/rear: 13,500/13,500-BTU		O	O	O	O	O	O	O	O
Batteries (2) - deep cycle RV, City water hook-up, 30-amp, power cord	S	S	S	S	S	S	S	S	S
AC/DC electrical distribution system - breaker panels, 40-amp converter/charger	S	S	S	S	S	S	S	S	S
Electrical control center - 110-V AC/12-V DC, 9-amp. batt. charger, 45-amp. converter, DC automotive fuses, AC circuit breakers	S								
50-amp. power cord*	O	O	O	O	O	O	O	O	O
Furnace - ducted, low profile, electronic ignition, 35,000-BTU	S	S							
Furnace - ducted, low profile, electronic ignition, 40,000-BTU		S	S	S	S	S	S	S	S
Generator prep kit - fuel line, (fuel line NA on 34WK-P), 12-V wiring, Shoreline/generator automatic changeover switch	S	S	S	S	S	S	S	S	S
Generator* - 4,000, 5,000 or 6,500-watt, gas (5,000 standard on 34DQ, 6,500 available)	O	O	O	O	O		O	S	O
Generator* - 3,600-watt 30WQ, 6,500-watt 34WK-P, LP	O						O		
Generator* - 7,500-watt, diesel							O		
Hydraulic leveling jacks* - front & rear	O	O	O	O	O	O	S	S	S
LP tank - permanent mount w/gauge, Monitor panel - water, holding & LP tank levels, battery condition gauge, water heater ignition switch w/pilot indicator light, water pump switch, located in galley, Water heater - 6-gal., electronic ignition 34WK-P	S	S	S	S	S	S	S	S	S
Water heater (Motoraid) & rear automotive heater	S	S	S	S	S		S	S	S
Water heater winterization by-pass valve, Water pump (demand) w/accumulator tank, Water system winterizing valve	S	S	S	S	S	S	S	S	S
SAFETY									
Assist handle* - exterior, Assist handle - interior (NA 35WQ), Assist strap - interior, Carbon monoxide detector/alarm, Fire extinguisher (10-B.C.), Ground fault interrupter, LP leak detector/alarm, Smoke detector/alarm, Window - escape, Windshield - laminated safety glass mounted in steel, High mount rear brake light, 3-point seat belts (drv./frt. pass.), lap belts in selected areas	S	S	S	S	S	S	S	S	S

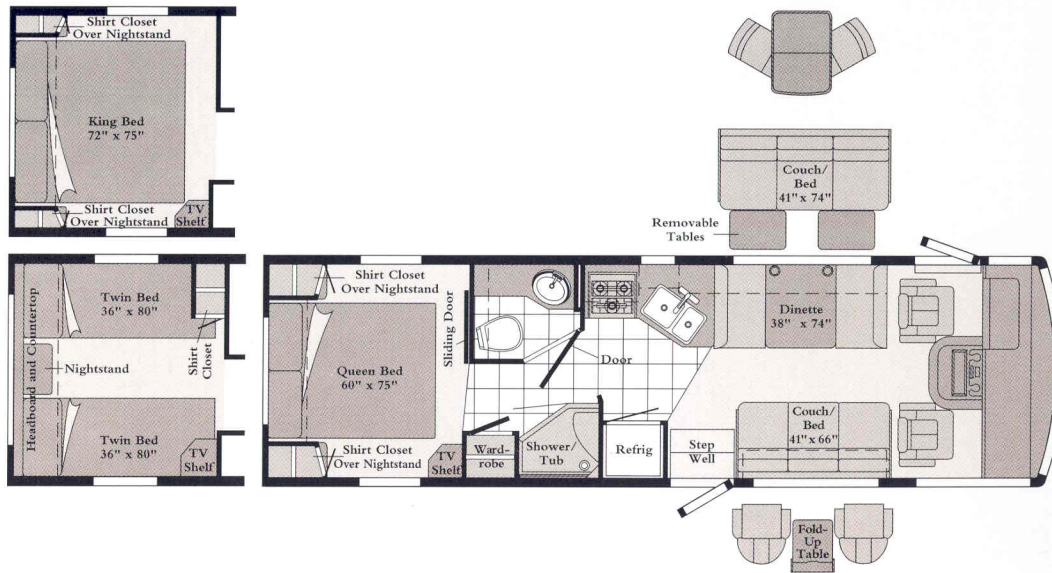
† The height of each model is based on the curb weight of a typically equipped unit on the standard chassis. The actual height of your vehicle may vary by as much as 2" depending on chassis or equipment variations.
NA Not Available.

*Not all options available in combinations. See dealer for details.

♣TV satellite system options do not include programming activation. Quality reception is only available in the lower 48 states. Receiver not available in Canada.

Winnebago Industries' continuing program of product improvement makes specifications, equipment, model availability and prices subject to change without notice. Comparisons to other motor homes are based on the most recent information available.

It took more than 75 floorplan combinations to hold all these ideas.



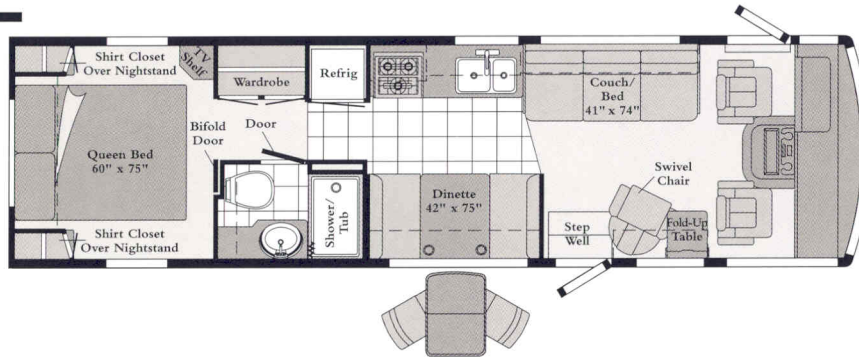
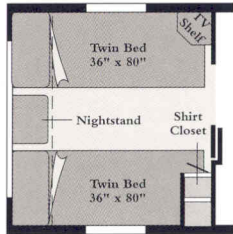
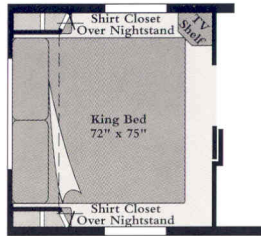
30WQ

This widebody model features a wardrobe and roomy, cross-aisle shower/tub. An angled double sink means extra counter space and extra galley storage.

Length	30'1"
Exterior Width	8'5.5"
Interior Width	8'
Interior Height	6'8"



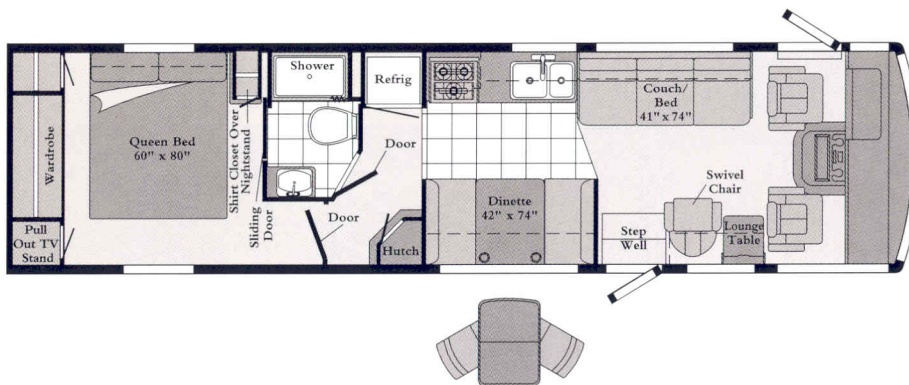
Standard Vinyl



32WQ

This widebody has a private bath and a standard queen or available king or twin beds. Interior storage spaces include the wardrobe and shirt closets.

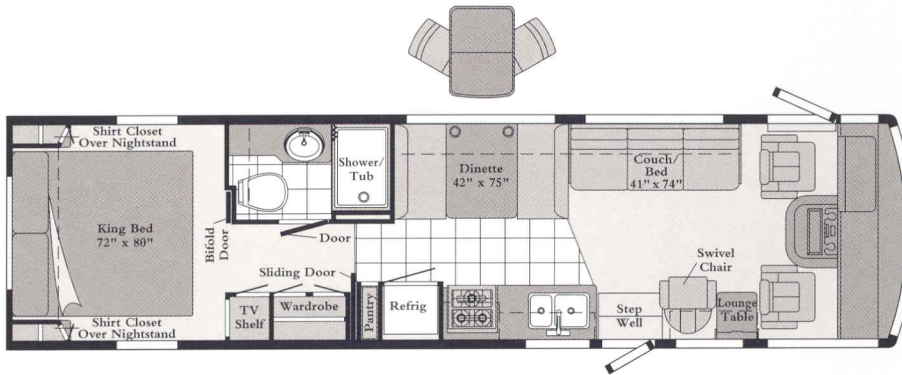
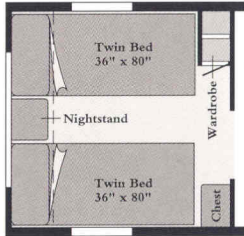
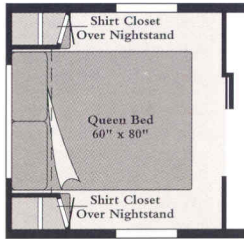
Length	32'3"
Exterior Width	8'5.5"
Interior Width	8'
Interior Height	6'8"



34WA

The side aisle leads to the private bath. The bedroom features a walk-around queen bed and a spacious wardrobe that covers the back wall.

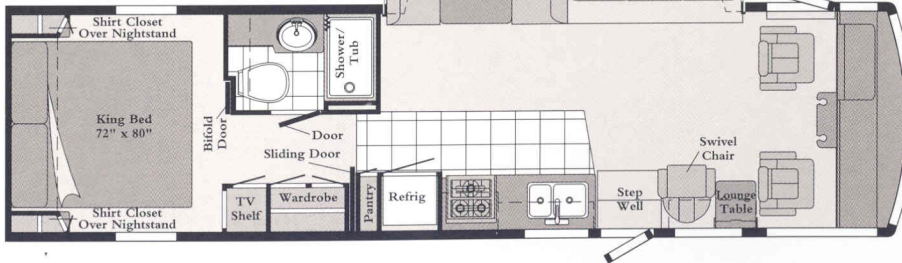
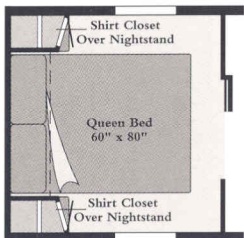
Length	34'3"
Exterior Width	8'5.5"
Interior Width	8'
Interior Height	6'8"



34WK

By making the best use of every square foot, this widebody has a separate dining area, private bath with shower/tub and a standard king bed.

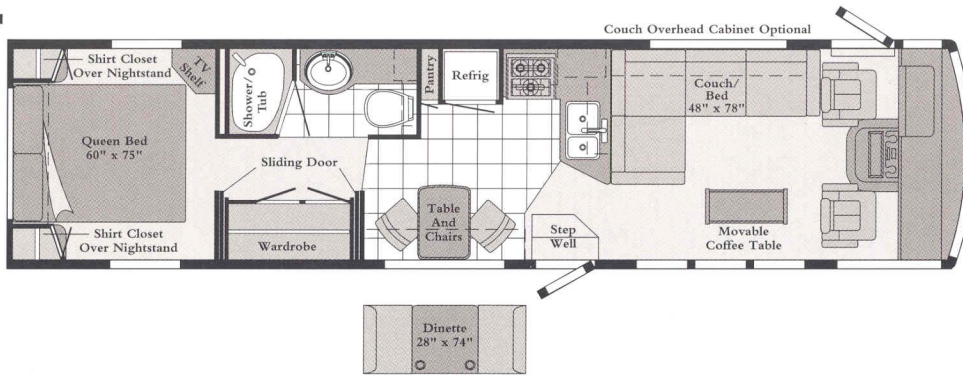
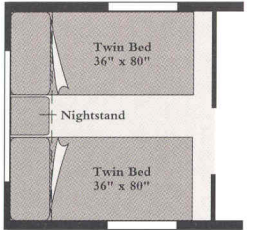
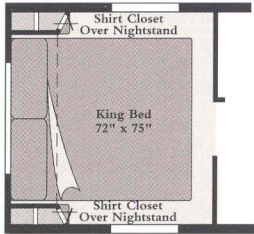
Length	34'3"
Exterior Width	8'5.5"
Interior Width	8'
Interior Height	6'8"



34WK-P (New)

This new diesel widebody features a standard slideout. It comes with a king bed or available queen. There's a roomy bath with tub/shower to boot.

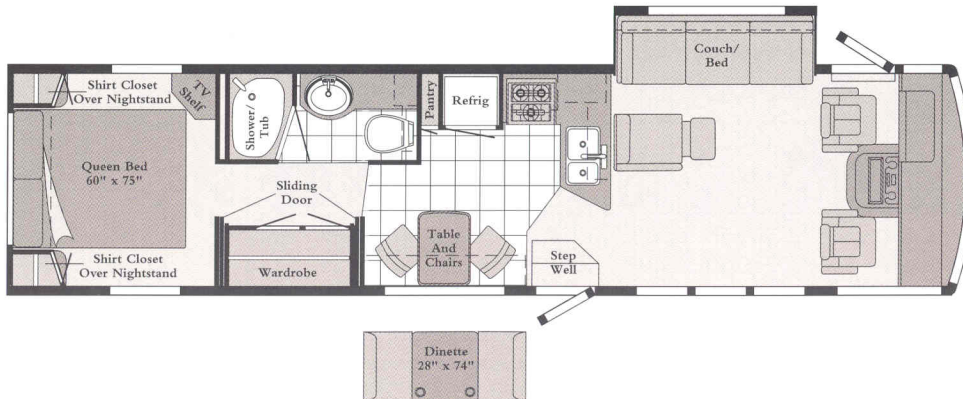
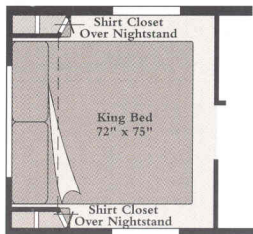
Length	34'3"
Exterior Width	8'5.5"
Interior Width	8'
Interior Height	6'8"



35WQ (New)

This exciting new wide-body floorplan gives you the option of having a slideout with an innovative L-shaped sofa.

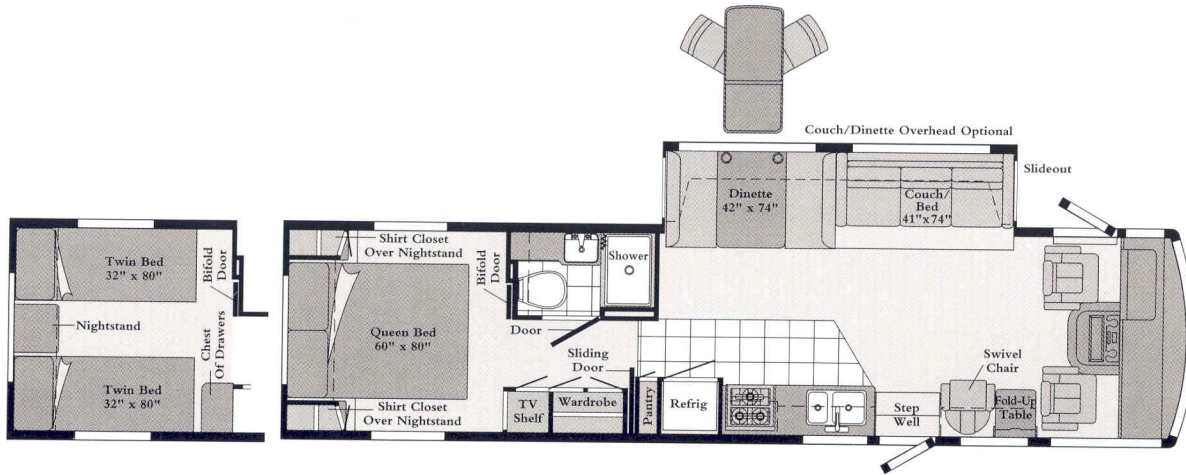
Length	35'10"
Exterior Width	8'5.5"
Interior Width	8'
Interior Height	6'8"



35WQ With Slideout

The maximum space of a widebody combines with the roomy luxury of a slideout.

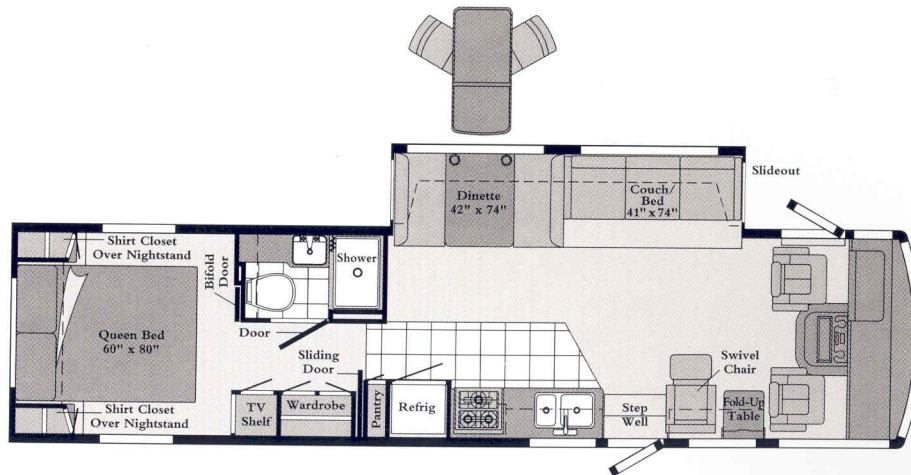
Length	35'10"
Exterior Width	8'5.5"
Interior Width	8'
Interior Height	6'8"



34RQ

Add 39 square feet of living space in seconds with a slideout room. It has a couch/bed plus a standard dinette or available dining table and chairs.

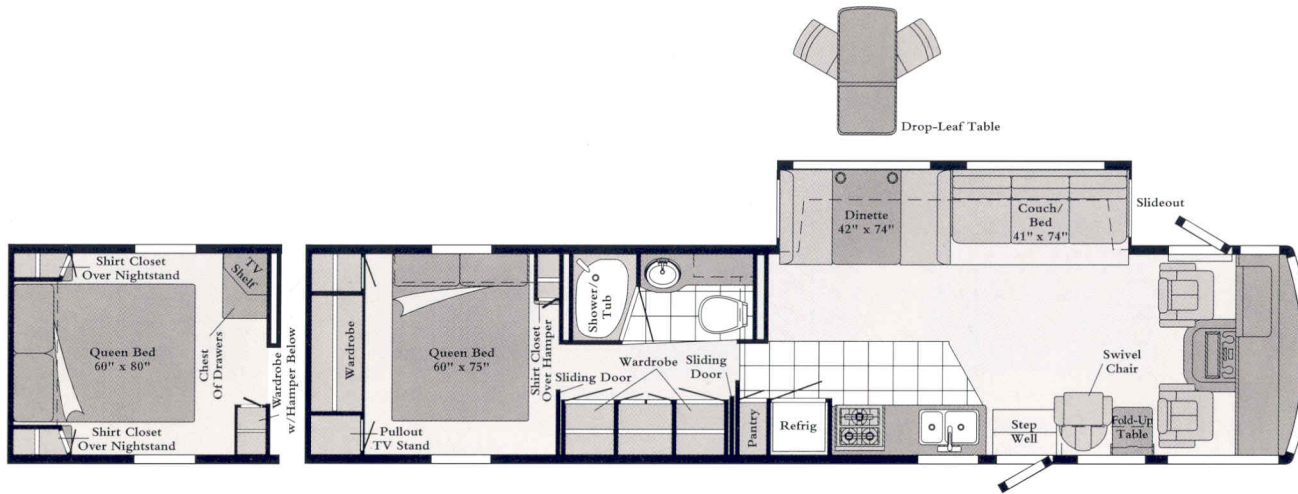
Length	34'2"
Exterior Width	8'
Interior Width	7'7"
Interior Height	6'8"



34DQ

This model features a standard slideout, a redesigned roll-out pantry and White Granite cabinetry.

Length	34'2"
Exterior Width	8'
Interior Width	7'7"
Interior Height	6'8"



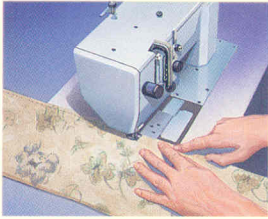
37RW

This model is loaded with standard features including a slideout, full-height wardrobes and a larger bath with tub and glass shower enclosure.

Length	37'6"
Exterior Width	8'
Interior Width	7'7"
Interior Height	6'8"

Widebody designs are over 96" wide. Some states restrict access on some or all state roads to 96". You should confirm the road-usage laws in the states of interest to you. Note: Dimensions shown are for sleeping space only and dashed lines denote overhead storage areas.

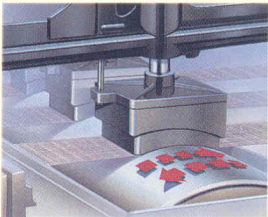
It's little things that make your motor home feel



Our own Stitchcraft Division makes the seats, cushions, draperies and bedspreads that give our interiors a custom-designed look and feel.



The cabinet shop is responsible for cabinetry, doors and countertops. They use time-tested traditional methods like panel and rail construction.



A double rub test, which simulates getting in and out of a seat up to 30,000 times, is used to make sure our upholstery fabrics will stand up to years of wear.



Botanical
with Waterford Oak



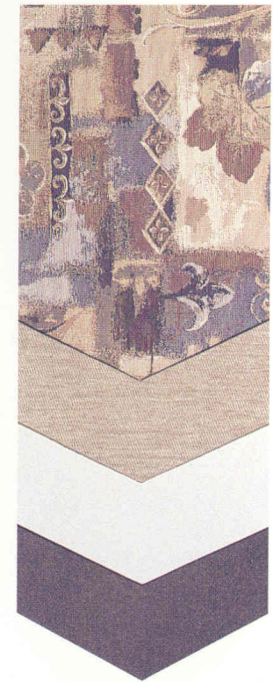
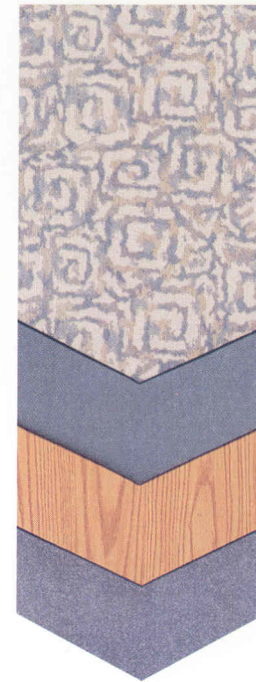
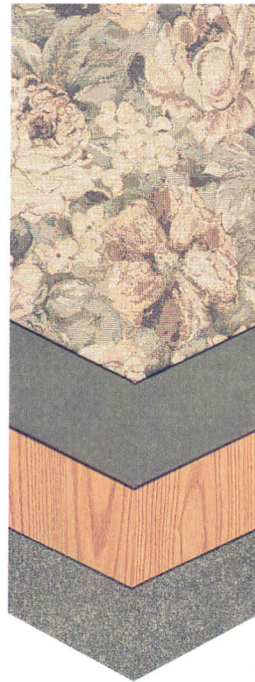
North Shore
with Waterford Oak



Zephyr
with Waterford Oak



Oakleaf
with White Granite

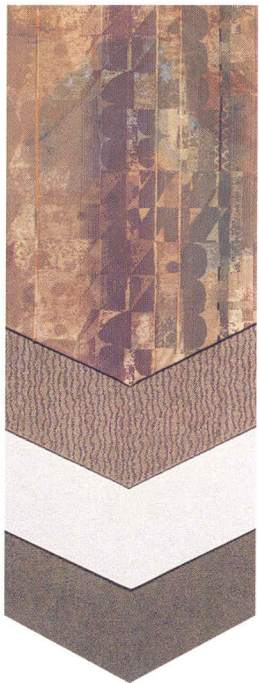


Note: Chair shown is for fabric representation only. This chair style is not available.

like home.



Easton
with White Granite



Other than bringing along your favorite knickknacks, how can you make a motor home actually feel like home? We start by considering dozens of details that add up to a concept we call Home Comfort Design.

By making most of our own furniture and cabinetry, we can have greater control over the fit and finish. And for fabrics and carpeting, we specify only materials that surpass industry wear tests and are treated for stain resistance. Of course, you're welcome to add your own touches. We just want to provide surroundings you'll enjoy coming home to.

New lower body panel color options



Umbra Metallic



Super Blue Metallic

This year's exterior lower body panel colors are Umbra Metallic, standard with Botanical and Oakleaf interiors, and Super Blue Metallic, standard with North Shore, Zephyr and Easton interiors. However, you may order either exterior color, regardless of your interior choice.



Winnebago Industries has been designated a Qualified Vehicle Modifier by Ford Motor Company. The QVM program promotes high standards for manufacturers who build motor homes on Ford chassis, and we are proud to be one of the first motor home manufacturers to qualify. Meeting QVM standards is a part of our policy of continuous quality improvement.



35WQ

A slideout is available on this innovative wide-body unit. The full 8' interior width provides room for larger amenities and flexible floorplans.



37RW

Adventurer offers a wealth of space-saving features: A slideout is standard on this unit, as well as generous wardrobe storage, a roomy bath and two inviting bedroom choices.

*Winnebago Industries
Commercial Vehicles*



We build mobile clinics, police and fire command posts and many other hard-working vehicles. Units from 22 to 37 feet can be custom built for almost any application.

*Where your
motor home comes
from is just as
important as
where it takes you.*

Most manufacturers assemble motor homes in several locations. But ours are built in just one place:

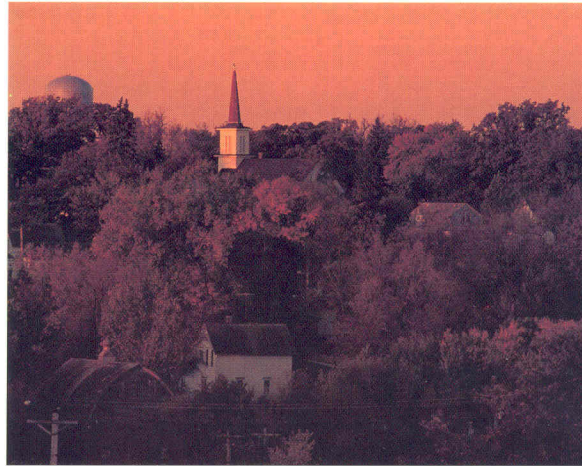
Forest City, Iowa. To understand how this helps us build better motor homes, you should know a little of our history. Winnebago Industries began in Forest City nearly 40 years ago.

Since that time, friends, neighbors and sometimes even two or three generations of the same family have worked side by side.

We've always had a special incentive to pay attention to the details and keep quality high. Because around here, building motor homes isn't just a job. It's a way of life.

To learn more about our motor homes, we invite you to see one of our outstanding dealers. And to see how we

build motor homes, you're welcome to visit our headquarters. Call us at (515) 582-3535 for a free factory tour.



Seat belts are your most important hookup. Always buckle up.