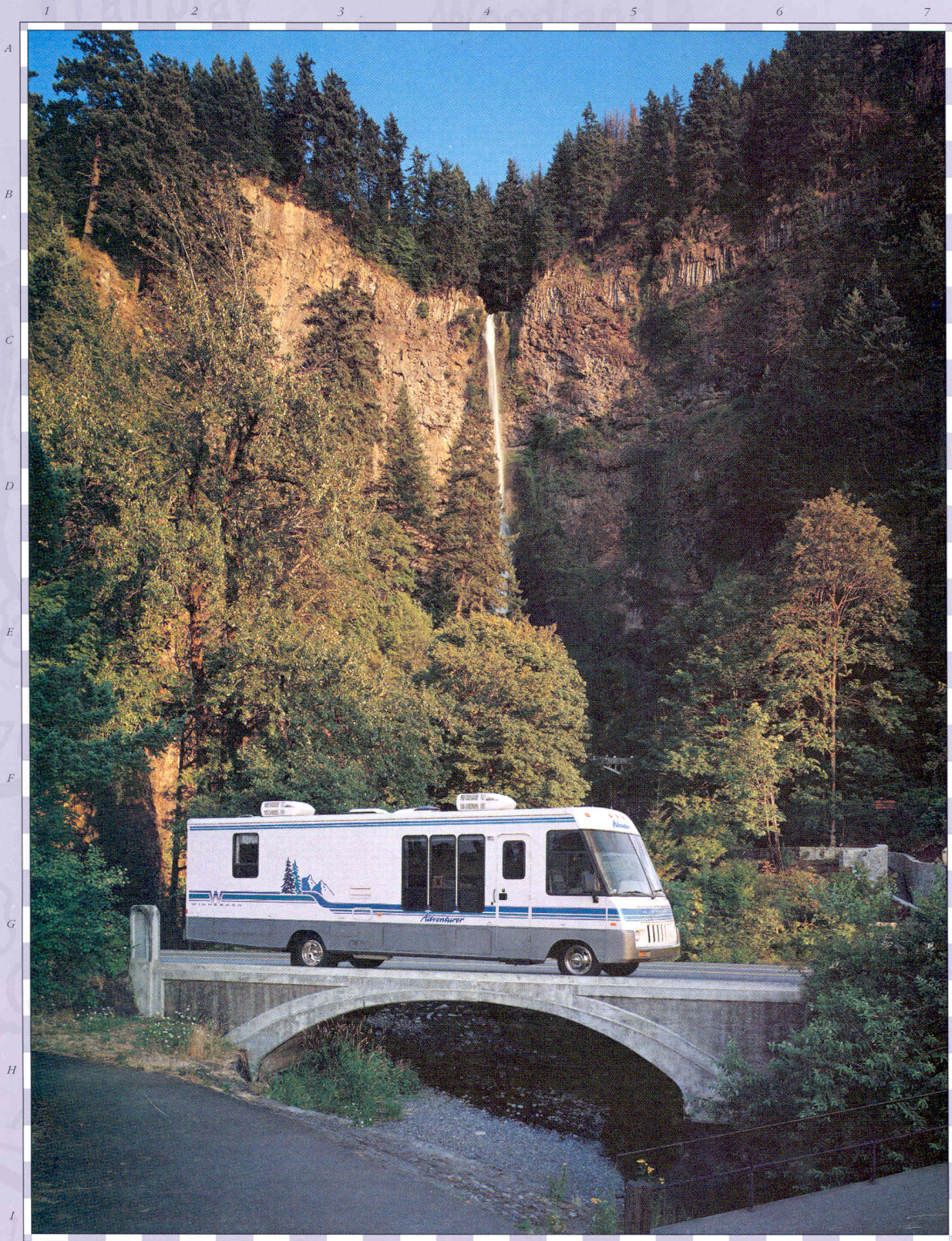


Winnebago Adventurer



Raise your expectations of what a motor home should be.



34WA

When you realize how much you put into living, you may decide to ask for more out of life. And owning a Winnebago Adventurer® is a great way to make the most of the time you call your own.

The Adventurer has more of what you're looking for in a motor home.

To begin with, all models are now wide bodies which gives you maximum living space. Bigger windows let you take in more of the great outdoors. And for your practical side, there's an abundant amount of basement storage.

The Adventurer is for people who travel

a little farther to find what they're looking for and stay a little longer to appreciate where they are. It's ideal for full-time living, or for living each day to the fullest. When there's no place in your life for second best, your place is inside an Adventurer.



"I KNOW GEORGE MISSES FLYING, EVEN
THOUGH HE WON'T SAY IT. HE WAS
DECORATED IN WORLD WAR II, AND HAD
HIS OWN PLANE FOR YEARS. WHEN WE
DECIDED TO WINTER IN MISSION, TEXAS,
WE GOT AN ADVENTURER. GEORGE TAKES
METICULOUS CARE OF IT, JUST LIKE HIS
PLANE. HE EVEN GETS THAT SAME SMILE
ON HIS FACE DRIVING IT FROM NORTH
DAKOTA TO TEXAS. AND WOULDN'T YOU
KNOW, WE ALWAYS MAKE IT THERE IN TIME
FOR THE BIG AIR SHOW IN HIDALGO."

How to get everything you want and need, without sacrificing either.



1
2
3
4
5
6
7
8
9
10
11

Winnebago Adventurer is a perfect example of what you can accomplish when you put your mind to it. We've put thirty-five years into perfecting the art and science of building recreation vehicles. And in the Adventurer, you'll find the results everywhere you look.

You'll see it in our widebody designs with features like floor-to-ceiling windows in the 34WQ. You'll see it in our choice of gasoline and diesel engines including diesel pushers. We've even increased the choices of interior fabrics and colors.

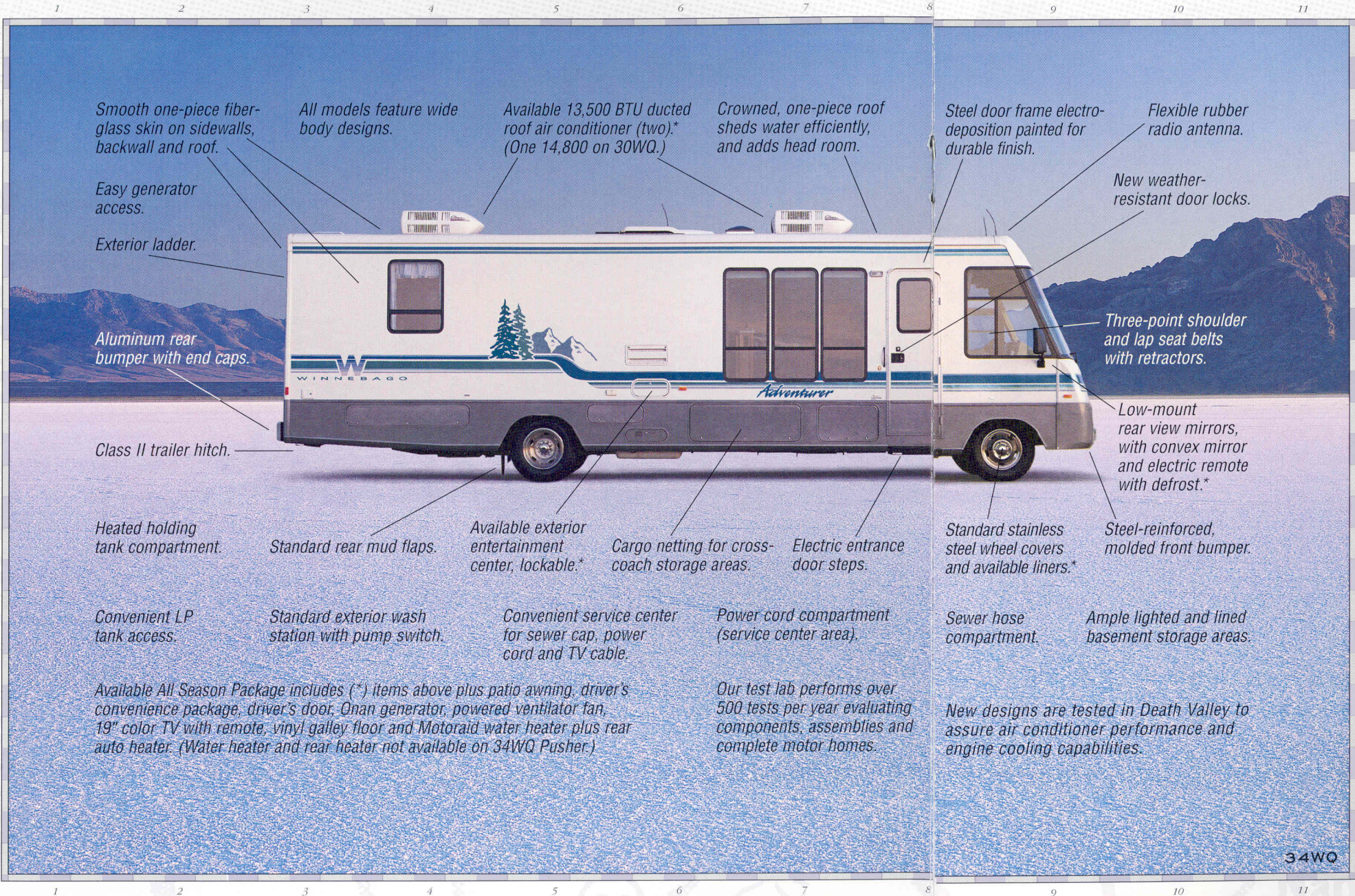
Whether you plan to chase down the sun

or set up permanent housekeeping, the Adventurer has the perfect balance of what you want and need in a motor home. And although we designed the Adventurer to set a standard for other motor homes in its class, after one look, you may think it's in a class by itself.



"ALBUQUERQUE HAS ALMOST EVERY-
THING, EXCEPT CYCLONES. WE'VE NEVER
REGRETTED MOVING HERE, BUT WE SURE
DO MISS IOWA STATE FOOTBALL. SO
WHENEVER THE CYCLONES COME TO
NORMAN OR STILLWATER, JANE AND I
CALL OUR IOWA FRIENDS, PUT ON OUR
CARDINAL AND GOLD, AND DRIVE OUR
MOTOR HOME UP TO THE GAME. I DON'T
KNOW IF WE'VE HELPED THEIR WIN-LOSS
RECORD OVER THE LAST 10 YEARS, BUT
WE HAVE A LOT OF FUN ANYWAY."

We made room for everything except compromise.



Smooth one-piece fiberglass skin on sidewalls, backwall and roof.

All models feature wide body designs.

Available 13,500 BTU ducted roof air conditioner (two).* (One 14,800 on 30WQ.)

Crowned, one-piece roof sheds water efficiently, and adds head room.

Steel door frame electro-deposition painted for durable finish.

Flexible rubber radio antenna.

Easy generator access.

Exterior ladder.

Aluminum rear bumper with end caps.

Class II trailer hitch.

Heated holding tank compartment.

Convenient LP tank access.

Available All Season Package includes (*) items above plus patio awning, driver's convenience package, driver's door, Onan generator, powered ventilator fan, 19" color TV with remote, vinyl galley floor and Motoraid water heater plus rear auto heater. (Water heater and rear heater not available on 34WQ Pusher.)

Standard rear mud flaps.

Standard exterior wash station with pump switch.

Available exterior entertainment center, lockable.*

Convenient service center for sewer cap, power cord and TV cable.

Cargo netting for cross-coach storage areas.

Power cord compartment (service center area).

Our test lab performs over 500 tests per year evaluating components, assemblies and complete motor homes.

Electric entrance door steps.

Standard stainless steel wheel covers and available liners.*

Sewer hose compartment.

New designs are tested in Death Valley to assure air conditioner performance and engine cooling capabilities.

New weather-resistant door locks.

Three-point shoulder and lap seat belts with retractors.

Low-mount rear view mirrors, with convex mirror and electric remote with defrost.*

Steel-reinforced, molded front bumper.

Ample lighted and lined basement storage areas.

34WQ

A Winnebago motor home is built around more than just a steel and aluminum frame. It's built around a philosophy that you'll find in every model: Integrity.

At Winnebago Industries, we take quality into our own hands, by building most components to our own demanding

specifications rather than buying them from outside suppliers. And when we're faced with important decisions, we listen to motor homers to make sure we're including the qualities they most want.

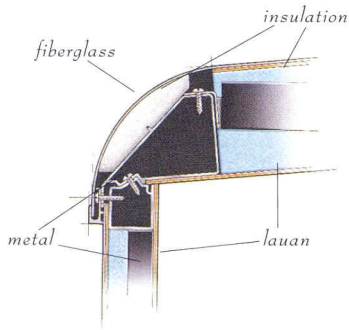
The result is a motor home that takes maximum advantage of every available

inch of living space in a floorplan you can enjoy and appreciate for years. And it's all integrated in a way that never compromises safety, reliability and durability.

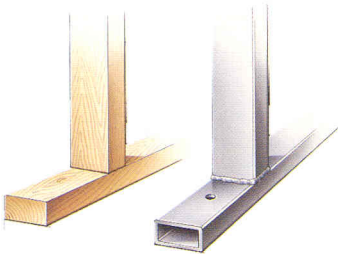
There may be easier ways to build a motor home. But there's no better way.



"YOU'D HAVE THOUGHT WE WERE MOVING TO THE MOON. WHEN JOHN WAS TRANSFERRED TO ST. LOUIS, MATT AND ANDREA WERE MOST UPSET ABOUT NOT BEING ABLE TO SEE THEIR GRANDPARENTS EVERY DAY. THEY FELT A LITTLE BETTER WHEN WE PROMISED TO TAKE OUR MOTOR HOME ON LOTS OF TRIPS. NOW WE'VE BEEN EVERYWHERE FROM THE GREAT LAKES TO THE GULF OF MEXICO. BUT THEIR FAVORITE VACATION SPOT IS STILL PARKING NEXT TO GRANDMA AND GRANDPA'S HOUSE."



The design of the jointing system is crucial for strengthening places where the roof, sidewalls and floor meet. Steel ribs go through the roof and attach to the sideframe. The floor joint locks into place so the weight of the wall rests on the steel floor substructure. Our unique jointing system has been imitated, but only ours stands up to our rigorous testing standards.



Believe it or not, some motor homes still use wood in their substructures. But each Winnebago motor home has a steel substructure for maximum strength and protection. It improves everything from the durability of your motor home to the way it handles. And that's the kind of solid feeling that's good to have after you've put a few miles behind you.



You'll feel right at home in this kitchen. The double stainless steel sink with cover gives you a flexible area for preparation. For cooking, there's a standard microwave plus a range and oven. And for leftovers, a large double-door refrigerator/freezer.



Bedrooms have TV connections plus a TV shelf or stand. With the available TV/VCR/switching system, you can watch videos and cable TV, too.

34WQ

34WA



All the appliances are secured with steel tie-downs, so they hold fast, even when the road gets rough.



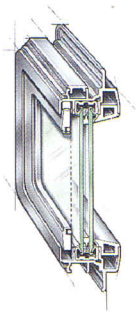
The big news in this year's Adventurers is that all models are wide bodies. This adds a new dimension of comfort. Cockpits also feature a roomier co-pilot seat and available 19" color TV.



With the available in-dash CD player, you can enjoy the convenience and outstanding sound qualities of compact discs.



"ALL THE WAY THROUGH COLORADO, ALLY BEGGED US TO LET HER FISH FOR TROUT. GRANDPA HAD TAKEN HER FISHING ON A LITTLE POND, BUT THIS LOOKED EVEN MORE EXCITING. SO WHEN WE PARKED FOR THE NIGHT ALONG THE GUNNISON RIVER, WE WENT TO A NEARBY BAIT SHOP. THE MAN WHO OWNED IT LET ALLY BORROW A POLE AND BAITED HER HOOK WITH A MARSHMALLOW. WE COULD HARDLY BELIEVE IT WHEN ALLY PULLED A SMALL RAINBOW TROUT OUT OF THE STREAM."

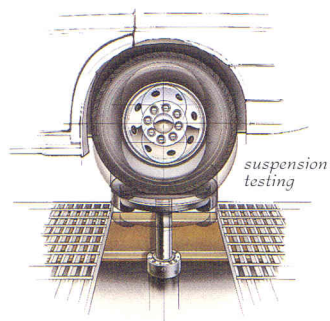


Our available dual-glazed, thermo-insulated windows do a lot more than give you a great view. They provide superior insulation for air conditioning and heating year-round, as well as reduce noise. The rails are designed to create a tight seal, and a specially designed system promotes proper drainage. Independent sliding screens easily remove for cleaning.



34WQ

We've made this the perfect place to wind down from a busy day. Just snap on the reading light, pick up your favorite novel from the nightstand, or reach for the TV remote. You'll be nodding off in no time.



Our manufacturing process includes more safety checks, quality inspections and product testing than any other motor home builder. New designs are tested by computer, then subjected to our punishing on-site test track. And every single motor home that leaves our factory undergoes a systematic performance inspection of major systems, components and fit and finish.



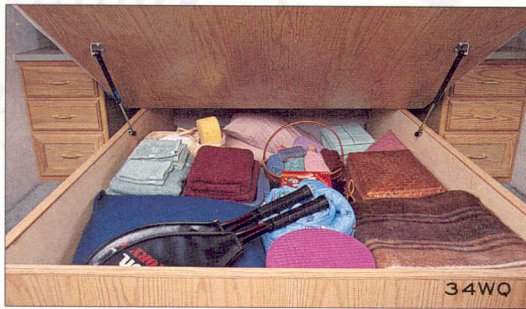
34WQ

There's not only a place for everything, but space to spare in this bathroom. Cabinets keep linens and toiletries handy and tidy.



34WQ

All bathrooms have a shower with a wall-surround and feature a skylight.



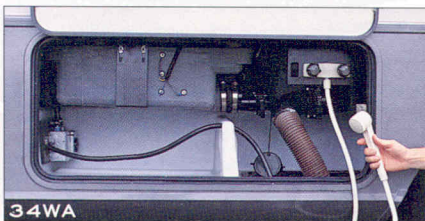
Here's another example of making the most of storage opportunities. This underbed storage is perfect for blankets, pillows and clothes.



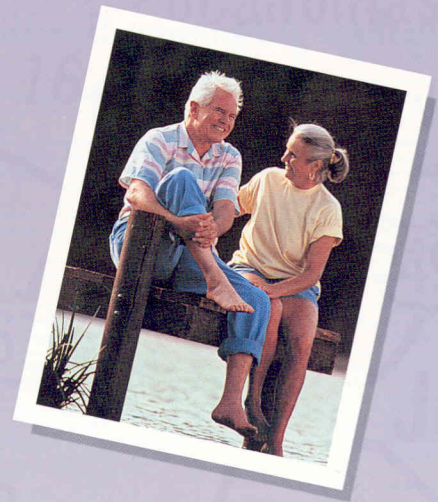
For all the time you spend outside your motor home, you'll want to consider these extras. The custom awning provides shelter and room for entertaining. And the exterior entertainment center lets you take your favorite music, sports and news with you.



You'll be amazed at the amount of space in this lighted pass-through storage compartment. It's weather-sealed and now has cargo netting.



Standard on every Adventurer, this exterior cleanup center puts hot and cold water within easy reach for quick cleanups.



"AFTER 60 CHICAGO WINTERS, PARKING OUR MOTOR HOME IN THE SOUTHERN SUN FOR FIVE MONTHS SOUNDED LIKE HEAVEN. BUT LEAVING OUR FRIENDS, ESPECIALLY OUR CHURCH CHOIR, WAS ANOTHER STORY. HOWEVER, AS THE MILES PASSED AND THE CLOUDS BEGAN TO LIFT, OUR SPIRITS DID, TOO. NOW, AFTER FIVE WINTERS IN HOT SPRINGS, WE LOVE BEING SNOWBIRDS AND LOOK FORWARD TO SEEING OUR WINTER FAMILY. TURNS OUT THEY HAVE SOME PRETTY FAIR SINGERS IN ARKANSAS, TOO."

Winnebago Adventurer Specifications.

	30WQ ^S	32WQ	34WQ	34WA	34WQ-P
1995 ADVENTURER					
Length	30'	32'2"	34'2"	34'2"	34'2"
Exterior Height w/Roof Air - Chevrolet†	11'5"	11'7"	11'8.5"	11'9.5"	NA
Exterior Height w/Roof Air - Ford†	TBD	11'6"	11'8"	11'6"	NA
Exterior Height w/Roof Air - Oshkosh†	NA	NA	NA	NA	11'7"
Exterior Width	8'5.5"	8'5.5"	8'5.5"	8'5.5"	8'5.5"
Interior Height	6'8"	6'8"	6'8"	6'8"	6'8"
Interior Width	8'	8'	8'	8'	8'
Exterior Storage	TBD	96.6 cu. ft.	118.9 cu. ft.	119.2 cu. ft.	TBD
Fuel Capacity - Chevrolet	78 gal.	78 gal.	78 gal.	78 gal.	NA
Fuel Capacity - Ford	75 gal.	75 gal.	75 gal.	75 gal.	NA
Fuel Capacity - Oshkosh	NA	NA	NA	NA	90 gal.
Fresh Water Capacity w/Heater	106 gal.	106 gal.	106 gal.	106 gal.	92 gal.
Holding Tank Capacities	111 gal.	99 gal.	96 gal.	99 gal.	96 gal.
LP Capacity	60 lbs.	80 lbs.	100 lbs.	100 lbs.	130 lbs.
GVWR - Chevrolet (1994 Chassis)	14,800 lbs.	16,000 lbs.	16,000 lbs.	16,000 lbs.	NA
GVWR - Chevrolet (1995 Chassis)	14,800 lbs.	16,500 lbs.	16,500 lbs.	16,500 lbs.	NA
GVWR - Ford	15,200 lbs.	17,000 lbs.	17,000 lbs.	17,000 lbs.	NA
GVWR - Oshkosh	NA	NA	NA	NA	19,840 lbs.
Wheelbase	178"	208"	228"	228"	228"

	30WQ ^S	32WQ	34WQ	34WA	34WQ-P
<ul style="list-style-type: none"> ● Standard ○ Optional 					
AUTOMOTIVE					
Chassis - Chevrolet - 7.4L 454 V-8 Fuel-Injected Gasoline Engine, Automatic Transmission w/Overdrive & Cooler, Front Suspension: Independent Coil, Spring w/Aux. Air Springs, Rear Suspension: Leaf Spring, 630-CCA Battery/105-Amp. Alternator	●	●	●	●	●
Chassis - Chevrolet - 6.5L Turbo Diesel Engine, Automatic Transmission w/Overdrive & Cooler, Front Suspension: Gas, Rear Suspension: Leaf Spring, 630-CCA Battery/105-Amp. Alternator	○				
Chassis - Ford - 7.5L 460 V-8 Fuel-Injected Gasoline Engine, Automatic Transmission w/Overdrive & Cooler, Front Suspension: Mono-Beam Axle w/Leaf Spring, Rear Suspension: Multi-Leaf Spring, 650-CCA Battery/130-Amp. Alternator	○	○	○	○	○
Chassis - Oshkosh - 5.9L 230-HP Turbo-Charged, After-Cooled Cummins Rear Diesel Engine, Automatic Transmission w/Cooler, Front Suspension: I-Beam w/Leaf Spring, Rear Suspension: Leaf Spring, Engine Block Heater, Fuel/Water Separator, Air Flow Indicator, 923-CCA Battery/100-Amp. Alternator					●
Shocks (Gas) Front, Chevrolet	○	○	○	○	○
Tires (Radial) w/Spare	●	●	●	●	●
DRIVER CONVENIENCES					
12-V Electrical Supply/Lighter, Battery Charge Control - Dual, Automatic, Battery Charger (Solar) - Wiring Prep	●	●	●	●	●
Battery Charger (Solar Panel)	○	○	○	○	○
Battery Disconnect - Auxiliary	●	●	●	●	●
Cabinet - Center Console					●
Convenience Tray	●	●	●	●	●
Cruise Control	●	●	●	●	●
Curtain w/Track - Front Wrap-Around	●	●	●	●	●
Defroster - Auxiliary 2-Speed	○	○	○	○	○
Driver's Door	○	○	○	○	○
Heating/Air Conditioning - Automotive Blend Air System	●	●	●	●	●
Hood Release - Exterior Key Locks, Map Light, Mirrors (Rear View) - Low Mounted, Includes Convex Element	●	●	●	●	●
Mirrors (Rear View) - Low Mounted, Electric w/Remote & Defrost	○	○	○	○	○

	30WQ ^S	32WQ	34WQ	34WA	34WQ-P
<ul style="list-style-type: none"> ● Standard ○ Optional 					
Rear View Monitor System - Cable Ready	●	●	●	●	●
Rear View Monitor System - Video/Audio	○	○	○	○	○
Seats w/3-Point Retracting Seat Belts - Reclining High-Back Design, Hinged Armrests, Lumbar Support, Swivel/Slide Pedestal w/Manual Remote Control	●	●	●	●	●
Seat w/Six-Way Manual Adjust - Driver's Seat	○	○	○	○	○
Service Light - Driver's Side, Start Circuit - Auxiliary, Steering - Power Assisted w/Tilt Wheel, Storage Cabinet (Front Overhead), Sunvisors - Multi-Adjustable	●	●	●	●	●
Upgrade - Driver's Convenience Package - Carpeted Floor Mats, Wall-Mount Map Pockets	○	○	○	○	○
Windows (Driver/Passenger) - Sliding, w/Screens	●	●	●	●	●
Windshield Wipers (Intermittent)	●	●	●	●	●
ENTERTAINMENT					
Antenna (Radio) - Roof-Mounted, Flexible Rubber	●	●	●	●	●
C.B. Prep Kit - Antenna, Coax Wiring, 12-V Power Connection	○	○	○	○	○
Entertainment Center (Patio)* - DC Receptacle, 110-V Outlet, TV Jack, Radio Antenna, AM/FM Radio Cassette, Speakers (2), Removable TV Table, Locking Door	○	○	○	○	○
Inverter - 110-V for TV/VCR	○	○	○	○	○
Stereo Power Switch - For Main or Auxiliary Battery Use, Stereo w/Digital Clock (Cab) - Electronic Tune AM/FM/Cassette Deck w/Speakers (4)	●	●	●	●	●
Stereo w/CD Player (Cab) - Electronic Tune AM/FM w/Speakers (4)	○	○	○	○	○
TV* (9" Color) w/Remote - Located in Bedroom	○	○	○	○	○
TV* (19" Color) w/Remote	○	○	○	○	○
TV* (19" Color) & VCR w/Remotes - Switching System, Cabinet Exchange	○	○	○	○	○
TV Enhancement Package - Antenna (Amplified), DC Receptacles (2), Interior Jacks (2), Coax Wiring, Cable Input, Exterior Antenna Jack, TV Shelf, Stand or Cabinet	●	●	●	●	●
INTERIOR					
Carpeting w/Pad - Stain Resistant w/Scotchgard™ Protector	●	●	●	●	●

	30WQ [§]	32WQ	34WQ	34WA	34WQ-P
● Standard ○ Optional					
Ceiling – Padded Vinyl Headliner, Ceiling Lights, Ceiling Vent – Non-Powered, Lounge, Galley, Bedroom, Ceiling Vent – Powered, Bathroom	●	●	●	●	●
Ceiling Vent – Powered Ventilator Fan, Galley (Lounge on 30WQ)	○	○	○	○	○
Clock – Decorator Style	●	●	●	●	●
Color Themes (Interior) – Choice of New Meadow (Light Teal), Parchment (Taupe)	●	●	●	●	●
Divider – Bi-Fold Door		●	●		●
Divider – Hinged Door				●	
Divider – Sliding Door	●		●		●
Lamp(s) – Decorator Style, in Lounge		●	●	●	●
Light (Aisle Courtesy) – By Entrance Door	●	●	●	●	●
Mini Blinds – Galley	●	●	●	●	●
Storage – below Couch	●	●		●	
Windows – Tinted w/62% Light Transmittal	●	●	●	●	●
Windows – Dual Glazed, Thermo-Insulated	○	○	○	○	○
GALLEY					
Coffee Maker	○	○	○	○	○
Flooring (Vinyl)*	○	○	○	○	○
Folding Chairs (2)			○		○
Hutch				●	
Microwave Oven	●	●	●	●	●
Pantry			●		●
Picture – Framed		●			
Range Hood – w/Light, Powered Vent	●	●	●	●	●
Range w/Large Glass Doored Oven – 4 Burners, Bi-Fold Range Cover	●	●	●	●	●
Refrigerator/Freezer – Large, Double-Door, Flush Mounted	●	●	●	●	●
Sink (Double) – Stainless Steel, Recessed w/Countertop Cover	●	●	●	●	●
Storage – below Dinette Seats	●	●		●	
Table & Chairs (4)	○	○		○	
Water Purification System	○	○	○	○	○
Skylight			●		●
BEDROOM					
Beds/Spread(s), Pillows, Pillow Shams, Throw Pillow	●	●	●	●	●
Lamp(s)* – Decorator Style, Wall-Mounted	●	●	●	●	●
Mattress(es) w/Non-Slip Mat, Access to Storage below, Gas Springs (Prop Rods on 34WQ Pusher)	●	●	●	●	●
Mirror – Wall-Mount					●
TV Shelf – Also Available on 30WQ, 32WQ & 34WQ w/Twin Bed Option	●	●	●	●	●
TV Stand				●	
Wardrobe – Mirrored Doors, Carpeted Floor, Drawer(s) (NA on 30WQ & 32WQ), Light	●	●	●	●	●
BATHROOM					
Flooring (Vinyl)	○	●	●	●	●
Hamper	●	●	●	●	●
Lavatory Cabinet	●	●	●	●	●
Linen Cabinet	●	●	●	●	●
Makeup Lights (3)				●	
Makeup Lights (4)	●	●	●	●	●
Medicine Cabinet – Mirrored Door				●	
Medicine Cabinet – Wood Doors	●	●	●	●	●
Mirror – Wall-Mounted	●	●	●	●	●
Shower/Tub – Flexible Shower Head, Molded Single-Piece Walls (Skylight in 30WQ)	●	●	●	●	●
Shower Curtain – w/Rod		●	●	●	●
Shower Door – (Glass)	●				

	30WQ [§]	32WQ	34WQ	34WA	34WQ-P
● Standard ○ Optional					
Sink – Rectangular, Molded Soap Dishes				●	
Sink – Oval w/Ledge Back	●	●	●		●
Tissue Holder – Surface Mount, Towel Rack (4), Towel Ring, Toilet w/Sprayer – Porcelain	●	●	●	●	●
Towel Bar	●				
EXTERIOR					
Awning Rail	●	●	●	●	●
Awning	○	○	○	○	○
Bumpers – Rustproof, Front: Steel Reinforced, Rear: Formed Aluminum w/End Caps	●	●	●	●	●
Entrance Door w/Screen Door – Latch & Deadbolt Locks, Electric Steps w/Door Jamb Switch	●	●	●	●	●
New Graphics, Holding Tanks (Heated Compartment), Ladder, Mud Flaps – Rear, Outlet – 110-V, Curbside, Porch Light – Interior Switch, Power Cord Storage Compartment, Sewer Hose & Lighted Storage Compartment, Wash Station – Pullout w/Water Pump Switch, Storage Compartments – Floor Lining, Steel Construction, Locks, Hold-Ups, Lights, Cargo Netting on Cross Coach Compartments	●	●	●	●	●
Tire Tools – Wrench, Leverage Bar (Tire Hoist Rod on 34WQ Pusher)	●	●	●	●	●
Trailer Towing Package – w/Class II Hitch, Trailer Wiring Extension	●	●	●	●	●
Undercoating	○	○	○	○	○
Water Fill Door – Lockable, Water Tank Drain	●	●	●	●	●
Wheel Covers	●	●	●	●	●
Wheel Liners – Stainless Steel	○	○	○	○	○
SYSTEMS					
Air Conditioning Pre-Wiring – Roof	●	●	●	●	●
Air-Conditioner – Roof, 14,800-BTU	○				
Air-Conditioner – Roof, Front/Rear: 13,500/13,500-BTU		○	○	○	
Air-Conditioners* – Roof, Low-Profile, Front/Rear: 13,500/13,500-BTU					○
Batteries (2) – Deep Cycle RV, in Stepwell Compartment	●	●	●	●	●
City Water Hook-Up	●	●	●	●	●
Electrical Control Center – 110-V AC/12-V DC, 9-Amp. Batt. Charger, 45-Amp. Converter, DC Automotive Fuses, AC Circuit Breakers, 30-Amp. Power Cord	●	●	●	●	●
Furnace – Ducted, Low Profile, Electronic Ignition, 35,000-BTU	●	●			
Furnace – Ducted, Low Profile, Electronic Ignition, 40,000-BTU			●	●	●
Furnace Ducting System – Rigid, below Floor, Generator Prep Kit – Gas Line (NA on 34WQ Pusher), 12-V Wiring	●	●	●	●	●
Generator* – 4,000, 5,000 or 6,500-Watt, Gas	○	○	○	○	
Generator* – 6,500-Watt, LP					○
Leveling System by HWH®	○	○	○	○	○
LP Tank – Permanent Mount w/Gauge, Monitor Panel – Water, Holding & LP Tank Levels, Battery Condition Gauge, Water Heater Ignition Switch w/Pilot Indicator Light, Water Pump Switch, Located in Galley	●	●	●	●	●
Water Heater – 6-gal., Electronic Ignition	●	●	●	●	●
Water Heater (Motoraid) & Rear Automotive Heater	○	○	○	○	
Water Heater Winterization By-Pass Valve, Water Pump (Demand) – 3 Switches	●	●	●	●	●
SAFETY					
Assist Handle – Interior & Exterior, Assist Strap – Interior, Carbon Monoxide Detector/Alarm, Fire Extinguisher (10-B.C.), Ground Fault Interrupter, LP Leak Detector/Alarm, Smoke Detector/Alarm, Window – Escape, Windshield – Laminated Safety Glass	●	●	●	●	●

[§]30RQ Available early 1995.

[†]The height of each model is based on the curb weight of a typically equipped unit on the standard chassis. The actual height of your vehicle may vary by as much as 2" depending on chassis or equipment variations.

*Not all options available in combinations. See dealer for details.

Winnebago Industries' continuing program of product improvement makes specifications, equipment, model availability and prices subject to change without notice.

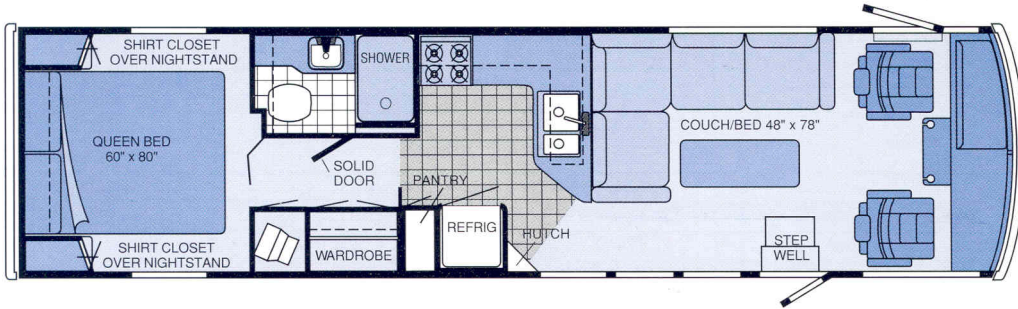
Choose from over 20 floorplan combinations.



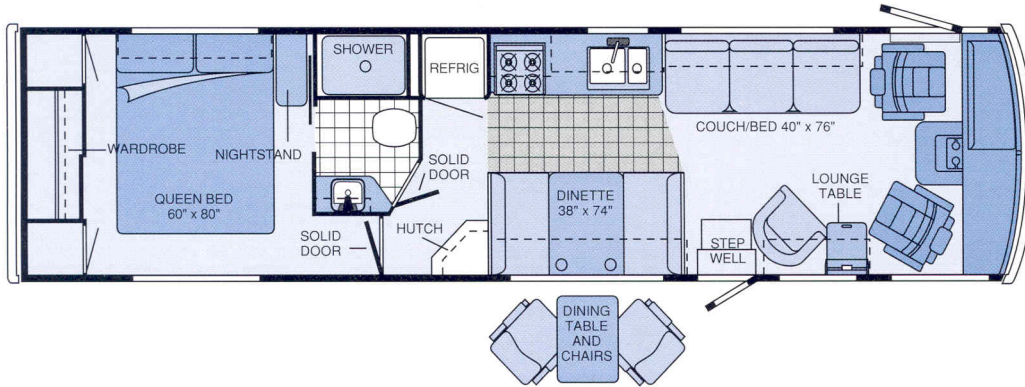
Standard Vinyl



Optional Vinyl



1995 ADVENTURER 34WQ PUSHER			
Length	34'2"	Fresh Water Capacity w/Heater	92 gal.
Exterior Width	8'5.5"	Holding Tank Capacities	96 gal.
Interior Height	6'8"	LP Capacity	130 lbs.
Interior Width	8'	Wheelbase	228"
Fuel Capacity - Oshkosh	90 gal.		



1995 ADVENTURER 34WA			
Length	34'2"	Fuel Capacity - Ford	75 gal.
Exterior Width	8'5.5"	Fresh Water Capacity w/Heater	106 gal.
Interior Height	6'8"	Holding Tank Capacities	99 gal.
Interior Width	8'	LP Capacity	100 lbs.
Fuel Capacity - Chevrolet	78 gal.	Wheelbase	228"

These wide body designs are over 96" wide. Some states restrict access on some or all state roads to 96" in body width. You should confirm the road usage laws in the states of interest to you.
 Note: Dimensions shown are for sleeping space only and dashed lines denote overhead storage area.

Choose the colors that match your spirit of adventure.



New Meadow _____



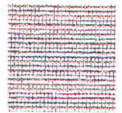
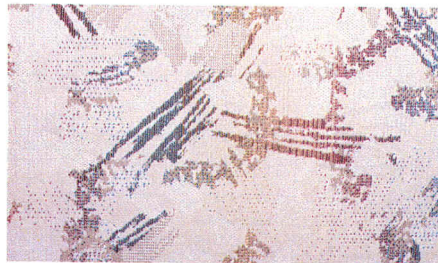
Accent



Carpet



Parchment _____



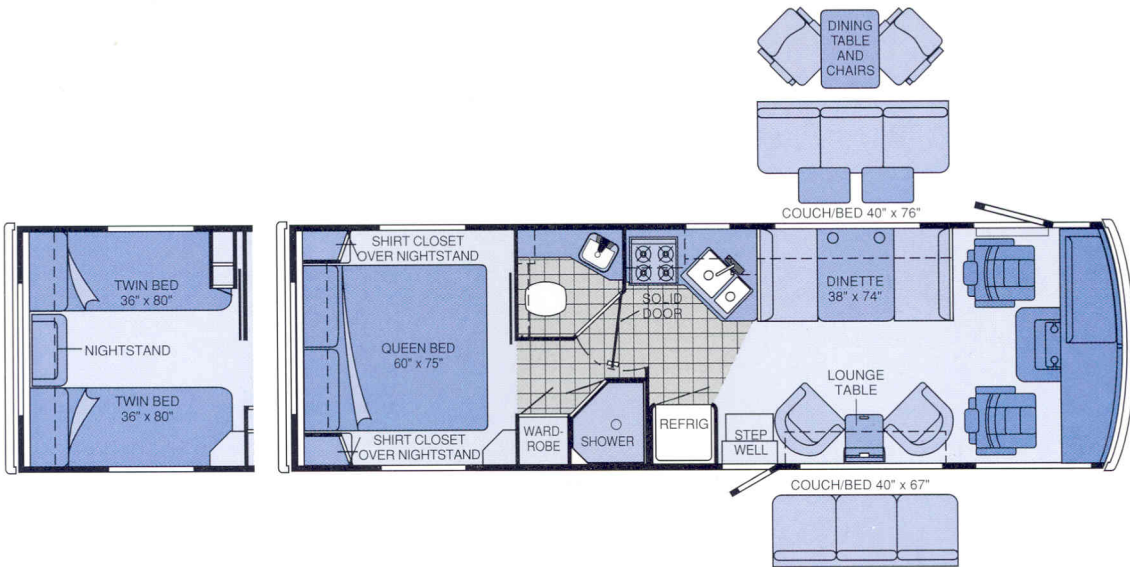
Accent



Carpet

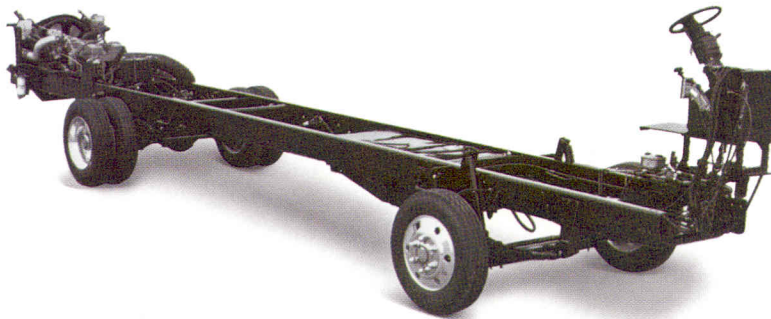
No need to worry about spills. All upholstery and carpeting in Winnebago motor homes is protected against stains with Scotchgard™ Brand Soil Repellent. The 100% stain-resistant carpeting carries an extensive stain and wear warranty.

protected by
Scotchgard
Protector

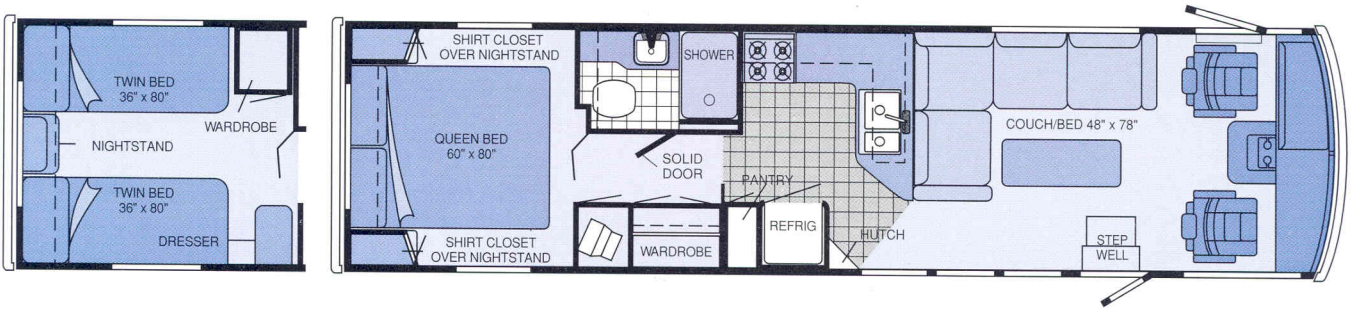


1995 ADVENTURER 30WQ

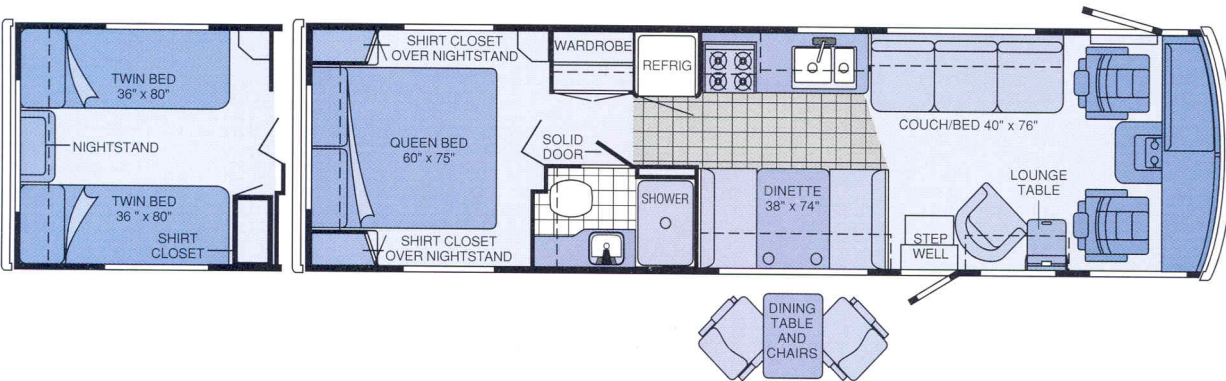
Length	30'	Fuel Capacity - Ford	75 gal.
Exterior Width	8'5.5"	Fresh Water Capacity w/Heater	106 gal.
Interior Height	6'8"	Holding Tank Capacities	111 gal.
Interior Width	8'	LP Capacity	60 lbs.
Fuel Capacity - Chevrolet	78 gal.	Wheelbase	178"



Lower operating costs and increased engine life are just two of the advantages of choosing the Adventurer Oshkosh® pusher model with a diesel engine. You'll also enjoy an exceptionally quiet ride up front plus better maneuverability and more power for towing and passing, even uphill.





1995 ADVENTURER 34WQ			
Length	34'2"	Fuel Capacity - Ford	75 gal.
Exterior Width	8'5.5"	Fresh Water Capacity w/Heater	106 gal.
Interior Height	6'8"	Holding Tank Capacities	96 gal.
Interior Width	8'	LP Capacity	100 lbs.
Fuel Capacity - Chevrolet	78 gal.	Wheelbase	228"



1995 ADVENTURER 32WQ			
Length	32'2"	Fuel Capacity - Ford	75 gal.
Exterior Width	8'5.5"	Fresh Water Capacity w/Heater	106 gal.
Interior Height	6'8"	Holding Tank Capacities	99 gal.
Interior Width	8'	LP Capacity	80 lbs.
Fuel Capacity - Chevrolet	78 gal.	Wheelbase	208"



A Winnebago motor home is more than just a great investment. It's a ticket to a world of fun, camaraderie and support. Foremost is our Winnebago-Itasca Travelers (WIT) Club. The WIT Club lets you meet other Winnebago Industries motor home owners and access unique club services like professional trip routing and mail forwarding.

When you join the Winnebago Motorsports Team you'll be right at home at racing events across America. Winnebago has been designated the Official Motor Homes of  and is closely associated with several NHRA drag racing teams.  Also, a growing number of NASCAR and NHRA drivers are involved with the Winnebago Motorsports Team. Motorsports members enjoy many benefits including a quarterly newsletter, a racing merchandise catalog and the opportunity to participate in special on-track events at selected races.



Down the road, factory support is never far behind. Twenty-four-hour emergency road service pays for towing to a factory authorized dealer at no cost to you. With over 20,000 locations throughout North America, quality assistance is just a phone call away with our Preferred Care Program. Plus, our warranty program is one of the most comprehensive in the industry, starting with 12-month or 15,000-mile protection. In addition, structural components are covered for 36 months/36,000 miles. Furthermore, a 10-year limited warranty protects the roof and walls.

If you'd like to know more about Winnebago and our motor homes, we invite you to visit one of our outstanding dealers, or visit us at our headquarters in Forest City, Iowa. Just call us at (515) 582-3535 for a free factory tour.

