

2006 WINNEBAGO SIGHTSEER®

Superb value in a Class A motor home.



THE 2006 SIGHTSEER HAS MORE FEATURES THAN EVER.

Sightseer makes your dream of owning a Class A Winnebago motor home easier than ever.



34A-Jasper Park with Sierra Maple

EMBARK ON A TRULY WONDERFUL EXPERIENCE.

The 2006 Sightseer combines Winnebago Industries quality with upscale features that RVers demand, at a price that makes owning a Winnebago Class A motor home easier than you might think. The Sightseer is designed and built for years of exceptional travel by people who know RVing.

As you step into the spacious living area, with a 30" deep front slideout room (20" on the 26P or 29R), you'll quickly notice how our SmartSpace™ design strategy makes the most of interior living space by maximizing functionality.

The Sightseer will keep you entertained with the standard 24" stereo TV, including remote and Video Selection System. And for more entertainment options, you can add the Home Theater Sound System: an amplifier, DVD/VCR combo, receiver, five speakers and a sub-woofer. Plus, the available 300-watt inverter allows you to enjoy TV even when you're not connected to shoreline power.

On the cover: 34A with Medium Parchment with Dark Forest Green Graphics.

Enjoy it all comfortably, in high-quality Stitchcraft furniture. The hoop-base lounge chair swivels and glides, and can be positioned to your favorite spot when you're not traveling. The high-backed driver and passenger seats, available in leather, have fixed lumbar support and allow you to swivel, slide or recline.

There are also additional seat belts for seating flexibility, and even an anchor for a child's safety seat in the forward-facing dinette seat.

The Sightseer comes standard with thermostat-controlled, residential-style floor-ducted heating and ceiling-ducted air conditioning. Choose the available flush-mounted, dual-glazed windows to add thermal efficiency in all types of weather. There's also an optional heat pump that keeps you warm without turning on the furnace.

Get all these and even more incredible features in the 2006 Winnebago Sightseer.



29R-Gingersnap with Portsmouth Oak

THE COMFORTS OF HOME, THE FREEDOM OF THE ROAD.

*After a full day of traveling, sit down and relax.
The Sightseer provides comfort and entertainment.*

BE PREPARED FOR SOME SERIOUS COOKING.

The galley, for example, has everything you need to prepare the perfect meal. It features a Magic Chef® three-burner range/oven with one high-output burner, vented range hood, microwave oven, double-door refrigerator, plus a countertop extension (not available on the 34A) and a sink cover to increase your work space. The galley also has plenty of storage, including a pantry with adjustable shelves or pullout trays. And full-extension drawer slides give you easy access to all your stored items.

Go gourmet with the galley upgrade, which includes a knife holder, a range cover, a raised-panel woodgrain insert on the refrigerator, a silverware tray and wire storage baskets below the dinette.



34A



29R



29R

A BEDROOM WITH ROOM.

Comfort is king in the Sightseer bedroom. The rear slideout (standard on the 26P, 29R, 34A and 35N) results in a spacious room, and the queen-sized Serta® mattress provides a good night's rest after a full day of fun. The bedroom is also a great place to watch TV or a movie, thanks to the available TV with remote.

Roomy wardrobes, overhead cabinets and the underbed compartment offer plenty of storage room.



THE SIGHTSEER'S TECHNOLOGY MAKES RVING EVEN BETTER.

The innovative features found in the Sightseer will make any trip easier.

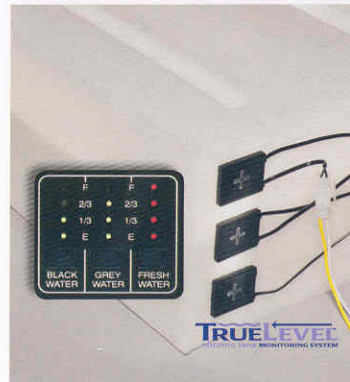


EASY-TO-USE TECHNOLOGY.

The Sightseer is filled with features to make your travels a breeze. The four available two-way radios let you stay in touch and have up to a five-mile range and can recharge from the coach's house batteries.

The OnePlace® systems center allows you to easily check vital functions and access frequently used switches, gauges and controls, without searching all over the coach. The PowerLine® (33T, 34A, 35N) energy management system monitors onboard electrical usage and sheds secondary electrical loads to minimize the nuisance of tripped campground circuit breakers.

The exterior service center is located for easy access and includes the QuickPort® service connection hatch. It allows you to close your compartment door when connected to hookups at the campground. And you'll never struggle putting cords through small holes because the hatch accommodates hoses and power cords.



A DASH WITH MORE.

The Sightseer dash puts large, easy-to-operate gauges, switches and controls at your fingertips. For peace of mind when backing up, select the available rearview monitor system. The automatic available KwikEe® hydraulic leveling system with touch-pad control makes for quick and easy leveling. The RV Radio®, includes an AM/FM stereo, CD player, convenient steering wheel remote and a handheld remote. Upgrade your RV Radio with the available Sirius® Satellite radio package, giving you 120 channels and a free six-month subscription (not available in Canada).

The StoreMore® slideout system allows the exterior compartments to extend along with the slideroom for easy access to stored items.

Another Winnebago industries' exclusive, the TrueLevel™ holding tank monitoring system incorporates Mirus* detector cells that detect liquid levels from outside the tank for accurate readings time after time.

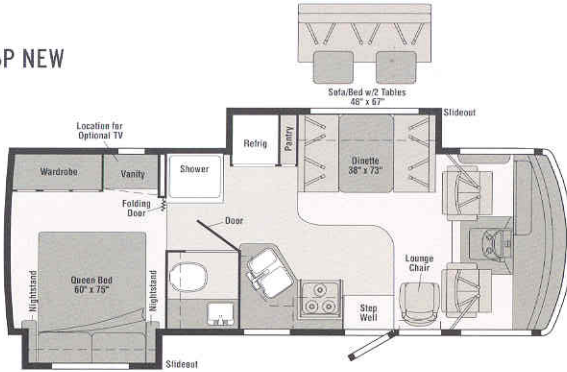
*Mirus is a trademark of Material Sciences Corporation.

EVERY DETAIL IS ACCOUNTED FOR.

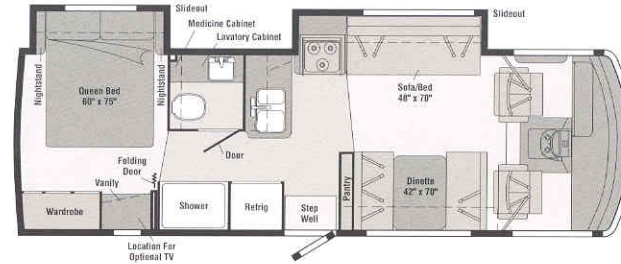
Floorplans are designed to make you feel right at home.

INTERIORS

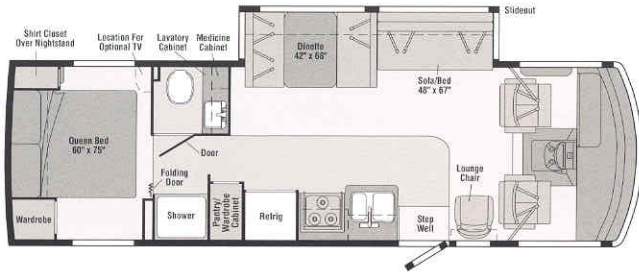
26P NEW



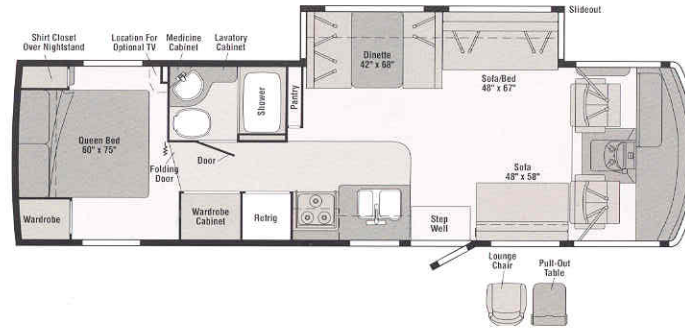
29R



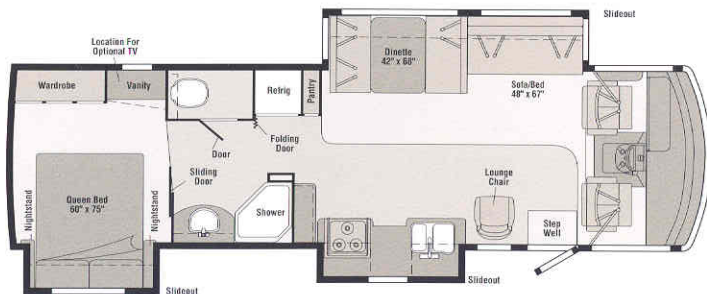
30B



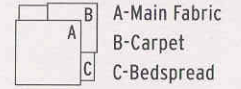
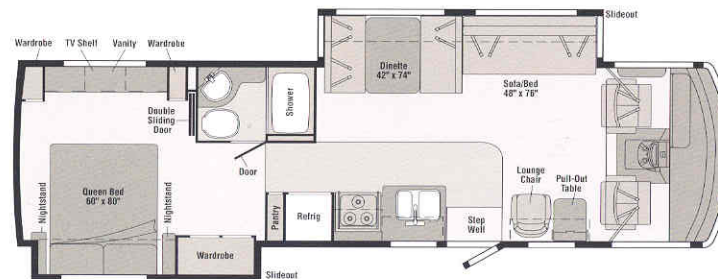
33T NEW



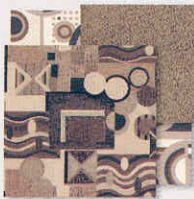
34A



35N



Gingersnap



Jasper Park



Stone Brook



Portsmouth Oak



Sierra Maple



Note: Dimensions shown are for sleeping space only and may vary due to styling differences.

EXTERIORS

Engineered for years of traveling.



Medium Parchment with Dark Cherry



Medium Parchment with Dark Forest Green



BUILT STRONG.

The exterior of the Sightseer, with its one-piece fiberglass sidewall and high-gloss, chip-resistant finish, will stand up to just about anything. For added curb appeal, wheel covers come standard, or select the available stainless steel wheel liners that resist corrosion.

Abundant basement storage allows you to bring along your favorite oversized items. Enjoy the outdoors even more when you equip your Sightseer with an available exterior entertainment center that includes AM/FM stereo, CD player with remote, 12-volt DC receptacle, TV jack, 110-volt outlet, speakers and a removable table.

2006 SIGHTSEER SPECIFICATIONS

	26P NEW	29R	30B	33T NEW	34A	35N
Length	27'1"	29'9"	30'11"	33'10"	34'6"	35'
Exterior Height ^a	12'2"	12'2"	12'1"	12'1"	12'3"	12'3"
Exterior Width ^b	8'6"	8'6"	8'6"	8'6"	8'6"	8'6"
Exterior Storage ^c (cu. ft.)	64.1	81.2	105.8	121.1	98.9	120.2
Awning Length	11'6"	16'	16'	18'	18'	16'
Interior Height	6'8"	6'8"	6'8"	6'8"	6'8"	6'8"
Interior Width	8'1"	8'1"	8'1"	8'1"	8'1"	8'1"
Freshwater Capacity w/Heater ^d (gal.)	67	75	67	67	72	65
Holding Tank Capacity ^d - Black/Gray (gal.)	39 / 36	37 / 41	41 / 57	41 / 45	41 / 57	43 / 42
LP Capacity ^e (gal.)	18	18	18	18	18	18
Fuel Capacity (gal.)	60	75	75	75	75	75
GCWR ^f (lbs.)	22,000 [*]	26,000 [■] / 22,000 [□] / 22,000 [*]	26,000 [■] / 22,000 [□] / 22,000 [*]	26,000 [■] / 22,000 [*]	26,000 [■] / 26,000 [○]	26,000 [■] / 26,000 [○]
GVWR (lbs.)	16,000 [*]	18,000 [■] / 18,000 [□] / 18,000 [*]	18,000 [■] / 18,000 [□] / 18,000 [*]	20,500 [■] / 18,000 [*]	20,500 [■] / 20,700 [○]	20,500 [■] / 20,700 [○]
GAWR - Front (lbs.)	6,500 [*]	7,000 [■] / 6,000 [□] / 7,000 [*]	7,000 [■] / 6,000 [□] / 7,000 [*]	7,000 [■] / 7,000 [*]	7,000 [■] / 7,500 [○]	7,000 [■] / 7,500 [○]
GAWR - Rear (lbs.)	10,500 [*]	11,000 [■] / 12,000 [□] / 12,000 [*]	11,000 [■] / 12,000 [□] / 12,000 [*]	13,500 [■] / 12,000 [*]	13,500 [■] / 13,500 [○]	13,500 [■] / 13,500 [○]
Wheelbase	158.5"	190"	190"	208"	228"	228"

■ = Chassis A □ = Chassis B ● = Chassis C ○ = Chassis D

Standard - S Optional - O

AUTOMOTIVE/CHASSIS

	26P	29R	30B	33T	34A	35N
Chassis A - Ford® 6.8L SOHC Triton® V10 362-hp, TorqShift™ 5-speed automatic overdrive transmission, hydraulic brakes, 4-wheel ABS, 130-amp. alternator	S	S	S	S	S	S
Chassis B - Workhorse™ P-Series 8.1L Vortec V8 340-hp, 4L85-E 4-speed overdrive transmission, hydraulic brakes, 4-wheel ABS, 145-amp. alternator	O	O				
Chassis C - Workhorse W-Series 8.1L Vortec V8 340-hp, 4L85-E 4-speed overdrive transmission, hydraulic brakes, 4-wheel ABS, 145-amp. alternator	S	O	O	O		
Chassis D - Workhorse W-Series 8.1L Vortec V8 340-hp, Allison® 1000 5-speed overdrive transmission, hydraulic brakes, 4-wheel ABS, 145-amp. alternator (requires stainless steel wheel liners)					O	O

	26P	29R	30B	33T	34A	35N
Tire spare, Tire Tools wrench & leverage bar, Trailer Hitch ^f 5,000-lb. drawbar/350 lbs. maximum vertical tongue weight & wiring w/7-pin connector, Wheelcovers (4)	S	S	S	S	S	S
Leveling Jacks hydraulic w/automatic control, Kwikkee, Wheel Liners stainless steel	O	O	O	O	O	O
Shocks/Stabilizer Package front, Workhorse (P-Series only)		O	O			
CAB AREA & DRIVER CONVENIENCES						
Beverage Holder passenger side, Cab Seats (fabric) w/3-point shoulder & lap seat belts w/retractors, armrests, lumbar support (fixed), multiadj. slide/recline & swivel, Cigarette Lighter/12-Volt DC Powerpoint, Convenience Tray w/cupholders, Cruise Control, Map Light(s), Map Pocket, Receptacle AC Duplex, Steering Wheel tilt w/power-assist, Sunvisors, Trim Panel driver side w/cupholder, storage tray, Window (driver & passenger) partial slider w/screen, Windshield Wipers intermittent	S	S	S	S	S	S

2006 SIGHTSEER SPECIFICATIONS

Standard - S Optional - O	26P	29R	30B	33T	34A	35N
Cab Seats leather insert w/vinyl surround, Defroster Fans (2) aux. 2-speed w/instrument panel switch, Monitor System rearview w/single camera & one-way audio, Audiovox®	0	0	0	0	0	0
ENTERTAINMENT						
RV Radio (cab) AM/FM stereo/CD, speakers (4), remote, satellite radio ready, CB Wire Prep , Radio Antenna roof-mounted, rubber, Radio Power Switch main/aux. battery, Satellite System Ready , TV 24" Color AC stereo w/remote, cabinet, TV Enhancement Package antenna (amplified), 12-volt DC powerpoints, interior jacks, coax wiring, cable input, splitter, Video Selection System	S	S	S	S	S	S
DVD/VCR combo w/remote, Entertainment Center (exterior) w/CD player, DC receptacle, AC duplex receptacle, AM/FM radio, TV jack, radio antenna, speakers (2), lockable compartment, removable TV table, Radios (4) 2-way, charging station, Satellite Dish Antenna RV digital, manual, Home Theater Sound System amplifier, DVD/VCR combo, receiver, recessed speakers (5), subwoofer	0	0	0	0	0	0
TV 13" Color DC w/remote, bedroom			0	0		
TV 19" Color AC w/remote, bedroom	0	0			0	0
Satellite Radio Sirius, antenna, wiring, receiver, includes 6-month subscription (NA in Canada)	0	0	0	0	0	0
INTERIOR						
Blinds mini (lounge, dinette, galley), Ceiling fabric , Clock , Curtain front wraparound w/track, Lights reading, adj. halogen (overheads), Lights ceiling, incandescent w/wall switches, Roof Vent nonpowered, lounge, Shades pleated (bedroom), Telephone Input interior jack (1), 12-Volt DC Receptacle lounge	S	S	S	S	S	S
Roof Vent powered, ventilator fan, lounge, Shades day/night pleated (lounge, dinette, bedroom), Windows dual-glazed/thermo-insulated, flush-mounted	0	0	0	0	0	0
Wainscoting w/chair rail	0		S	S	S	S
CABINETRY						
Portsmouth Oak or Sierra Maple stile-and-rail construction	0	0	0	0	0	0
COUNTERTOPS						
Laminate w/T-mold edging	S	S	S	S	S	S
FLOORCOVERING						
Carpeting w/pad, Vinyl bath & galley, Congoleum®	S	S	S	S	S	S
FURNITURE						
Dinette w/access to storage below, cupholders	S	S	S	S	S	S
Sofa w/storage below, tables (2)	0					
Sofa(s) w/storage below, throw pillow		S	S	S	S	S
Lounge Chair hoop-base, swivel/gliders, cabinet w/table, magazine rack				0		S
Lounge Chair hoop-base, swivel/gliders	S		S		S	
GALLEY						
Faucet single-control, Moen® Microwave Oven , Pantry , Range Hood vented w/light & fan, Range 3-burner (one high-output) w/oven, Magic Chef, Receptacle(s) duplex, Refrigerator/Freezer double-door, Sink recessed, molded, double-bowl w/sink cover (countertop material), Wall Border	S	S	S	S	S	S
Countertop w/lip-up extension	S	S	S	S	S	S
Galley Upgrade Package range cover, wastebasket, silverware tray, raised-panel refrigerator door insert, knife holder, dinette storage wire baskets, Microwave/Convection Oven , Range Top 3-burner w/pot & pan drawer	0	0	0	0	0	0
Glass Partition		S				
Storage Cabinet					S	
BATH						
Cabinets lavatory, medicine, Faucet (lavatory) dual-control, Faucet (shower) dual-control w/flexible showerhead, Light shower, Roof Vent powered, Shower w/removable clothes rod, Shower Door textured glass, Shower Skylight , Sink , Toilet w/foot-pedal flush & sprayer, Towel Rack 3-rod, mounted to door, Wall Border	S	S	S	S	S	S
Mirror frameless w/beveled edge	S	S	S			

a The height of each model is measured to the top of the tallest standard feature and is based on the curb weight of a typically equipped unit. The actual height of your vehicle may vary by several inches depending on chassis or equipment variations. Please contact your dealer for further information.
 b Sightseer floorplans feature a wide-body design — over 96" in making your purchase decision, you should be aware that some states restrict access on some or all state roads to 96" in body width. Before making your purchase decision, you should confirm the road usage laws in the states of interest to you.
 c The load capacity of your motor home is designated by weight, not by volume, so you cannot necessarily use all available space when loading your motor home.
 d Capacities are based on measurements prior to tank installation. Slight capacity variations can result due to installation applications.
 e Capacities shown are tank manufacturer's listed water capacity (W.C.). Actual filled LP capacity is 80% of listing due to overfilling prevention device on tank.

	26P	29R	30B	33T	34A	35N
BEDROOM						
Bed queen, Serta innerspring w/underbed storage, Bedspring pillow shams, throw pillow, Lights decorative wall lamps, Nightstand(s) , Picture(s) framed, Wall Border , Wardrobe Cabinet(s) carpeted shelf, clothes rod	S	S	S	S	S	S
TV Shelf		S	S	S		S
Vanity Cabinet with stool (stool N/A 35N)	S	S			S	S
EXTERIOR						
Awning Rails w/rain gutters, Door entrance w/separate screen door, deadbolt lock, Entrance Door Steps double, electric w/doorjamb switch, Exterior Graphics Packages Medium Parchment w/Dark Cherry or Medium Parchment w/Dark Forest Green (with protective film below entry door), Grill aluminum, Light porch w/interior switch, Mirrors manual adjust w/convex, Mudflaps front, Receptacle AC duplex, Sidewall Skin one-piece smooth fiberglass, Storage Compartments valance panels, gas strut, single-paddle latch, lights, trunk liner, TriMark® KeyOne™ System	S	S	S	S	S	S
Awning patio , Ladder , Mirrors electric/remote w/defrost, Undercoating Workhorse	0	0	0	0	0	0
SYSTEMS						
Automotive Heater/AC , Aux. Start Circuit , Batteries (2) (coach) Group 24 deep-cycle, Battery (coach) disconnect system, Battery Charge Control automatic dual, Electrical Distribution System AC breakers, DC fuses, 45-amp. converter/charger (26P, 29R, 30B only), AC & DC breaker panels, 45-amp. converter/charger (33T, 34A, 35N), Generator Prep Kit , OnePlace systems center wall-mounted, energy management display (33T, 34A, 35N only), battery condition gauge, generator hourmeter gauge, generator start/stop switch, heating & A/C thermostat, holding tank levels, LP tank level, water heater light(s), water heater switch, water pump switch, water tank level, Power Cord 30-amp., Service Center city water hookup/tank diverter fill, drainage valves, QuickPort service connection hatch, cable input, power cord, portable satellite hookup, sewer hose 10', telephone input, Tank holding, heated compartment, Tank LP permanent mount w/gauge, TrueLevel holding tank monitoring system, Water Heater 6-gallon, electronic ignition, LP gas, Water Pump demand, Water System Winterization Package bypass valve water heater, siphon tube, Water Tank Fill gravity	S	S	S	S	S	S
Air Conditioner (roof) 14,800 BTU, ceiling-ducted w/wall thermostat, Furnace 30,000 BTU, low-profile, ducted, in-floor, Generator 4,000-watt, Onan® MicroQuiet™ gas	S	S	S			
Air Conditioners (2) (roof) high-efficiency, ceiling-ducted w/wall thermostat, Generator 5,500-watt, Onan Marquis Gold™ gas, PowerLine energy management system				S	S	S
Air Conditioner w/Heat Pump (roof) 14,800 BTU, ceiling-ducted w/wall thermostat, PowerLine energy management system	0	0	0			
Air Conditioners w/Heat Pump (2) (roof) high-efficiency, ceiling-ducted w/wall thermostat				0	0	0
Furnace 35,000 BTU, low-profile, ducted, in-floor				S		
Furnace 40,000 BTU, low-profile, ducted, in-floor					S	S
Inverter DC/AC , 300-watt, Wash Station exterior, w/pump switch located in service center, Water Heater 6-gallon, electronic ignition/110v/LP w/motoraid & aux. auto heater	0	0	0	0	0	0
SLIDEOUTS						
Slideout Room bed w/slideroom cover	S	S			S	
Slideout Room galley w/slideroom cover, StoreMore					S	
Slideout Room bed/wardrobe w/slideroom cover						S
Slideout Room sofa/range w/slideroom cover, StoreMore		S				
Slideout Room sofa/dinette w/slideroom cover, StoreMore			S	S	S	S
Slideout Room dinette/refrigerator/pantry w/slideroom cover, StoreMore	S					
SAFETY						
Assist Handle exterior, Assist Bar interior, Bumpers front & rear, Child-Seat Tether Anchor , Detectors/Alarms LP leak, smoke, carbon monoxide, Fire Extinguisher 10 B.C., Ground Fault Interrupter , Brake Light high-mounted, Seat Belts cab, 3-point, Seat Belts lap (in selected areas), Window escape, Windshield laminated safety glass	S	S	S	S	S	S
WARRANTY ⁹						
12-month/15,000-mile basic warranty , ^h 36-month/36,000-mile warranty on structure , ^h 10-year limited parts & labor warranty on roof skin ^h	S	S	S	S	S	S

f Actual towing capacity is dependent on your particular loading and towing circumstances, which includes the GVWR, GAWR and GCWR as well as adequate trailer brakes. Please refer to the Operator's Manual of your vehicle for further towing information.
 g See separate chassis warranty details provided in Owner's Manual.
 h See your dealer for complete warranty information.
 Not all items available in combination. See dealer for details.
 Winnebago Industries' continuing program of product improvement makes specifications, equipment, model availability and prices subject to change without notice. Comparisons to other motor homes are based on the most recent information available.

NOT ALL MOTOR HOMES ARE CREATED EQUAL. As you take a closer look, you'll see that there is much more to the Winnebago Sightseer than a long list of standard features and compelling floorplans. Beneath it all you'll find a SuperStructure® foundation of strength and durability, and Winnebago Industries' recognized service and warranty support.



We are committed to service. We back our motor homes with the best after-the-sale service in the industry. This includes a 12-month/15,000-mile basic limited warranty; 36-month/36,000-mile warranty on structure; standard 10-year limited parts-and-labor roof skin warranty; and complimentary 24-hour Roadside Assistance Program. TripSaver Fast Track Parts guarantees that in-stock warranty parts ship directly to your dealer within 24 hours. Winnebago Industries has a nationwide dealer service network.



Certified quality. Recreation Vehicle Dealer Association members annually rate RV manufacturers on the quality of their products, and on their sales and service support. Winnebago Industries has achieved the coveted Quality Circle Award every year since its inception, the only RV manufacturer to do so.



Warning: Joining WIT has been known to cause excessive fun. Winnebago-Itasca Travelers (WIT) is a club for owners of Winnebago Industries motor homes. WIT is a great way to meet people and offers you caravans and rallies, local and state group activities, and other benefits for RVers.



Seat belts are your most important hookup. Always buckle up.

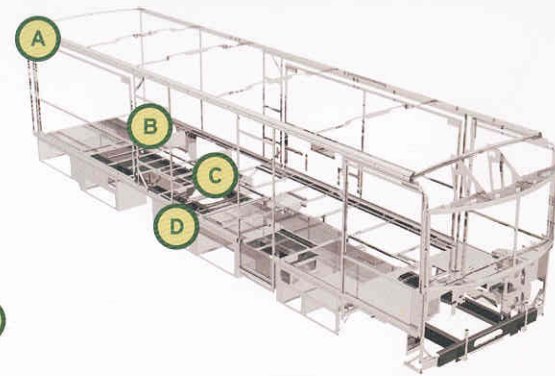
NYSE listing: WGO

Visit www.winnebagoind.com for virtual product tours and the latest product updates.

©2005 Winnebago Industries Inc., Forest City, IA 50436. Printed in USA.



A



SUPERSTRUCTURE is the term given to Winnebago Industries' structural motor home design and construction. Rather than a single component, it is the culmination of design integration that incorporates steel and aluminum substructures; welded tubular steel floor risers; interlocking joint technology; and Thermo-Panel® floor, roof and sidewalls to form a high-strength, durable vehicle body.

Thermo-Panel manufacturing combines a durable exterior panel with welded aluminum support substructures. The substructures are embedded in a high-density, block-foam insulation core to create a strong, durable, yet lightweight sidewall. Just another Winnebago Industries invention.

The all-steel cab features integral A and B pillars for added strength and stability. Steel also separates the occupants from the engine compartment. Believe it or not, less advanced designs may use wood in this critical application.

- A Interlocking joint construction utilizes advanced extruded aluminum structural components to create integrated floor-to-sidewall and sidewall-to-roof joints. This design effectively distributes the weight of the walls and roof, making a stronger and more durable body than competitor designs that rely on screws to carry the weight.
- B The foundation substructure assembly is precision-aligned to maximize strength and cross-coach support as well as durability.
- C Tubular steel risers feature a truss-design core for improved strength and provide a stable base for the floor structure and storage compartments.
- D Critical steel components are treated using an advanced electrodeposition coating process that provides superior corrosion protection.

One-year-old Winnebago Industries' fiberglass roof



One-year-old competitor's rubber roof



BUILT TO A HIGHER STANDARD.

The Sightseer features a crowned, one-piece fiberglass roof skin backed with a 10-year limited parts-and-labor roof skin warranty. Fiberglass offers superior strength, attractiveness and durability compared to rubber roofs found on many competitive models. Over time, rubber roofs are susceptible to chalking, streaking and degradation, and have less puncture and tear resistance than fiberglass.