

1999

ADVENTURER®

Adventurer



1999 ADVENTURER

With space and features like this, it's no wonder the Adventurer is one of our best selling motor homes.

Cross the threshold of this year's Adventurer and you'll be wowed as you surround yourself with comfort. In the galley you'll find beautifully constructed cabinets, a three-burner range and an available microwave/convection oven. You'll also notice that most Adventurer models include the PowerLine™ Energy Management System which monitors electrical usage and automatically cycles appliances off if power demands exceed available power. Several floorplans incorporate the exclusive StoreMore™ Hydraulic Slideout System which offers an expansive storage compartment that slides out with the room extension for easier access without sacrificing storage space. Every model is a full, widebody basement design with heated storage compartments. And for dirty clothes, the 37G offers an available vented washer/dryer tucked away by the bath area. What's more, everything is held secure with a Tri/Mark KeyOne™ System, so only one key is needed for most doors. In fact, about the only thing that can improve life in the Adventurer is the kind of view you give yourself when you park it.



35C Watch your living and galley area grow with the StoreMore™ Hydraulic Slideout System, made even more comfortable in most models by an incliner lounge chair. Deep, full-length cabinets over the couch and dinette as well as slideout drawers under the dinette maximize your storage space.



35C An inline galley with toe kicks under the cabinets puts every kitchen item within easy reach.



37G This roomy bathroom offers a corner sink, makeup lights, a glass shower door and abundant storage.



32T As you can see, there's plenty of room to relax in the lounge with the available Mobile Theater Sound System, overhead TV or VCR. Or use the fold-up table behind the passenger's chair for a game of chess. Driving the Adventurer is made easier with a bus-styled front design that provides a better field of vision. A tint band on the windshield helps lessen the sun's glare.



37G You just might have your most perfect sleep ever in this queen bedroom. It includes a Serta® Comfort Master Luxury innerspring mattress, full-length sliding mirrored doors, tip-out hamper, a bed that lifts for access to storage beneath it and a tip-out window to help keep the rain out and let a cool breeze in.



32T An available computer work station, a standard interior telephone jack and an oak convenience tray help keep you organized while front seats with lumbar support help keep you comfortable.



37G For added convenience during extended travel, a vented washer/dryer is available in this model, complete with clothes rod and multiple shelving.



37G The StoreMore™ Hydraulic Slideout System gives you extra living space without sacrificing storage space. The generously sized compartments move with the room itself, offering easy access to stored gear.

1999 ADVENTURER SPECIFICATIONS

1999 ADVENTURER	30A	32T	33B	34H	34V-P	35C	37G
Length	30'9"	32'4"	33'6"	34'10"	34'3"	35'	37'7"
Exterior Width ⁵	8'5.5"	8'5.5"	8'5.5"	8'5.5"	8'5.5"	8'5.5"	8'5.5"
Interior Height	6'8"	6'8"	6'8"	6'8"	6'8"	6'8"	6'8"
Interior Width	8'0.5"	8'0.5"	8'0.5"	8'0.5"	8'0.5"	8'0.5"	8'0.5"
Fuel Capacity (gal.) - Chevrolet/Ford/Freightliner	75/75/NA	75/75/NA	75/75/NA	75/75/NA	NA/NA/90	75/75/NA	NA/75/NA
Fresh Water Capacity w/Heater	85 gal.	85 gal.	76 gal.	85 gal.	92 gal.	67 gal.	69 gal.
Holding Tank Capacity - Black/Gray	55/56 gal.	49/50 gal.	55/53 gal.	57/50 gal.	40/53 gal.	40/50 gal.	55/55 gal.
LP Capacity ⁶	28 gal.	28 gal.	28 gal.	28 gal.	39 gal.	28 gal.	28 gal.
Wheelbase	190"	208"	216"	228"	228"	220" Chev./228" Ford	248"
Exterior Height w/AC - Chevrolet/Ford/Freightliner*	11'11"/11'10"/NA	11'10"/11'10"/NA	11'9"/11'10"/NA	11'10"/12"/NA	NA/NA/12'	11'7"/11'10"/NA	NA/11'11"/NA
Exterior Storage	124.5 cu. ft.	137 cu. ft.	110.9 cu. ft.	162 cu. ft.	95.3 cu. ft.	141.3 cu. ft.	142.2 cu. ft.
GVWR - Chevrolet	16,500 lbs.	16,500 lbs.	16,500 lbs.	16,500 lbs.	NA	16,500 lbs.	NA
GVWR - Ford	18,000 lbs.	18,000 lbs.	20,500 lbs.	20,500 lbs.	NA	18,000 lbs./20,500 lbs.	20,500 lbs.
GVWR - Freightliner	NA	NA	NA	NA	23,600 lbs.	NA	NA

S Standard
O Optional

AUTOMOTIVE	30A	32T	33B	34H	34V-P	35C	37G
Chassis - Chevrolet - 7.4L Vortec V-8 @ 290-HP, 124-amp. alternator, anti-lock brake system	S	S	O	S		S	
Chassis - Ford - 6.8L V-10 @ 275-HP, 130-amp. alternator	O	O	S	O		O	S
Chassis - Freightliner - Cummins ISB5.9L turbo diesel @ 275-HP, engine block heater, exhaust brake ready, 130-amp. alternator, Allison MT643 4-speed transmission, air brakes, air suspension					S		
Engine exhaust brake					O		
Front shocks/steering stabilizer package* - Chevrolet only	O	O		O	O		
Tires (radial) w/spare (spare NA 34V)	S	S	S	S	S	S	S
DRIVER CONVENIENCES							
3-point retracting seat belts w/4-position adjustable D-loop (drv./frt. pass.) - seats w/reclining high-back design, hinged armrests, lumbar support, swivel/slide pedestal, lap belts in selected areas	S	S	S	S	S	S	S
6-way driver seat*	O	O	O	O	O	O	O
Passenger seat with footrest			O				
12-V electrical supply/lighter	S	S	S	S	S	S	S
Battery charge control - dual, automatic	S	S	S	S	S	S	S
Battery charger (solar) - wiring prep	S	S	S	S	S	S	S
Battery charger (solar) - 10-watt	O	O	O	O	O	O	O
Battery disconnect - auxiliary	S	S	S	S	S	S	S
Cabinet - center console					S		
Carpeted floor mats, map pocket(s)	S	S	S	S	S	S	S
Convenience tray	S	S	S	S	S	S	S
Cruise control, start circuit - auxiliary	S	S	S	S	S	S	S
Curtain w/track - front wrap-around	S	S	S	S	S	S	S
Defroster* - fans, aux. 2-speed	O	O	O	O	O	O	O
Driver's door* - w/ exterior step	O	O	O	O	O	O	O
Fog lamps*	O	O	O	O	S	O	O
Heating/air conditioning	S	S	S	S	S	S	S
Hood release - exterior key locks	S	S	S	S	S	S	S
Leather seats* - driver & passenger, leather insert w/vinyl surround	O	O	O	O	O	O	O
Map light, sunvisors	S	S	S	S	S	S	S
Mirrors (rear view) - exterior, low mounted, includes convex element	S	S	S	S	S	S	S
Mirrors (rear view) - exterior, low mounted, electric w/remote & defrost	O	O	O	O	O	O	O
Rear view monitor system - cable ready	S	S	S	S	S	S	S
Rear view monitor system (Sony)* - video/one-way audio	O	O	O	O	O	O	O
Service light - driver's side, exterior	S	S	S	S	S	S	S
Steering - power assisted w/tilt wheel	S	S	S	S	S	S	S
Storage cabinet - (front & side overheads)	S	S	S	S	S	S	S
Window shades (2) - roller, light filtering	S	S	S	S	S	S	S
Windows (driver/passenger) - sliding, w/screens	S	S	S	S	S	S	S
Windshield wipers (intermittent)	S	S	S	S	S	S	S

S Standard
O Optional

ENTERTAINMENT	30A	32T	33B	34H	34V-P	35C	37G
Work station* - pull-out, pass. side, dash	O	O	O	O	O	O	O
Antenna (radio) - roof-mounted, flex. rubber	S	S	S	S	S	S	S
C.B. prep kit - antenna, coax wiring, 12-V power connection	O	O	O	O	O	O	O
Entertainment center (patio)* - DC receptacle, 110-V outlet, TV jack, radio antenna, exterior antenna jack, AM/FM radio w/cassette or CD player, speakers (2), table, locking door	O	O	O	O	O	O	O
Satellite system pre-wiring - roof	S	S	S	S	S	S	S
Satellite system - digital [∞] w/elevation sensor	O	O	O	O	O	O	O
Sound system - deluxe, amplifier, 6 speakers	O	O	O	O	O	O	O
Radio power switch - main or aux. battery	S	S	S	S	S	S	S
Stereo (cab) - AM/FM/cassette w/speakers (4)	S	S	S	S	S	S	S
Stereo w/CD player (cab) - AM/FM w/speakers (4)	O	O	O	O	O	O	O
Telephone input & interior jack	S	S	S	S	S	S	S
TV* (13" color) w/remote - located in bedroom	O	O	O	O	O	O	O
TV* front (19" color) w/remote - video selection system	O	O	O	O	S	O	O
TV* front (19" color) & VCR w/remotes - video selection system	O	O	O	O		O	O
TV* side (19" color) w/remote* - video selection system			O				
TV enhancement package - antenna (amplified), DC receptacles (2), interior jacks (2), coax wiring, cable input, TV shelf or stand	S	S	S	S	S	S	S
VCR w/remote					O		
SLIDEOUT							
Slideout room (driver's side)* - switch located on instrument panel, cover, compartments slideout w/room			S			O	S
Slideout room (driver's side)* - switch located on instrument panel, cover					S		
Overhead cabinets* - mirror & wainscoting w/ chair rail					S	O	S
INTERIOR							
Cabinets - wood doors	S	S	S	S	S	S	S
Carpeting w/pad - stain resistant	S	S	S	S	S	S	S
Ceiling lights, courtesy lights (2)	S	S	S	S	S	S	S
Ceiling lights - fluorescent, recessed, galley, lounge					S		
Ceiling vent* - non-powered, lounge (30A), galley (NA 30A), bedroom (30A)	S	S	S	S	S	S	S
Ceiling vent - powered, bathroom	S	S	S	S	S	S	S
Ceiling vent - powered ventilator fan, galley (lounge 30A)	O	O	O	O	O	O	O
Clock - decorator style	S	S	S	S	S	S	S
Coffee table* - (avail. only w/slideout on 35C)					S	O	S
Color themes (interior) - choice of Sunshowers (taupe), Vintage Grove (plum), Juniper (teal), Chameleon (blue)	S	S	S	S	S	S	S
Lamp(s)* - decorator style, in lounge	S	S	S	S	S	S	S
Picture* - framed		S	S			S	
Throw pillows (2)	S	S	S	S	S	S	S
Wardrobe - mirrored door(s), carpeted floor, drawers (NA on 32T, 33B, 35C), light, clothes rod, shelf (NA on 34V)	S	S	S	S	S	S	S
Washer/dryer combination							O

△ The Adventurer floorplans feature a widebody design—over 96" In making your purchase decision, you should be aware that some states restrict access on some or all state roads to 96" in body width. Before making your purchase decision, you should confirm the road usage laws in the states of interest to you.

∞ TV satellite system options do not include programming activation or receiver. Quality reception is only available in the lower 48 states.

Winnabago Industries' continuing program of product improvement makes specifications, equipment, model availability and prices subject to change without notice. Comparisons to other motor homes are based on the most recent information available.

S Standard
O Optional

	30A	32T	33B	34H	34V-P	35C	37G
Washer/dryer prep kit - drainage, water, electrical connections					O		
Windows - tinted	S	S	S	S	S	S	S
Windows* - dual glazed, thermo-insulated	O	O	O	O	O	O	O
Windows* - dual glazed, thermo-insulated (bedroom)			O			O	
GALLEY							
Coffee maker*	O	O	O	O	O	O	O
Countertop - solid surface					O		
Decorative light - dinette					S	S	S
Flip-up countertop extension	S						
Flooring (Vinyl)	S	S	S	S	S	S	S
Galley rail	S	S					
Hutch				S			
Microwave/convection oven - touch control	O	O	O	O	O	O	O
Microwave/convection oven w/range fan - residential 30", touch control					S		
Microwave oven - touch control	S	S	S	S	S	S	S
Pantry - slide-out w/adjustable shelves, locking	S	S	S		S	S	S
Range hood - fan, generator hourmeter gauge*, light & switch	S	S	S	S		S	S
Range top - 3-burners w/storage drawers below, range cover	O	O	O	O	O	O	O
Range w/large glass-doored oven - range cover, 3-burners, 1 high output burner	S	S	S	S	S	S	S
Refrig./freezer - large, double-door	S	S	S	S	S	S	S
Refrig./freezer - large, double-door w/icemaker			O	O	O	O	O
Refrig./freezer* - side-by-side w/icemaker			O		O	O	O
Sink (double) - stainless steel, recessed w/countertop covers, single control faucet	S	S	S	S	S	S	S
Spice rack			S				
Storage drawers - below dinette seats	S	S	S	S	S	S	S
Table & chairs (4)*	O	O	O	O	O	O	O
Wall border - decorative	S	S	S	S	S	S	S
Water purification system	O	O	O	O	O	O	O
BEDROOM							
Bedsprad, pillows, pillow shams, throw pillow	S	S	S	S	S	S	S
Hamper							S
Headboard - padded fabric					S		
Lamp(s) - decorator style, wall-mounted	S	S	S	S	S	S	S
Mattress(es) (Serta®) - w/non-slip mat, access to storage below, gas springs	S	S	S	S	S	S	S
Mirror - backwall					S		
Wall border* - decorative	S	S	S	S	S	S	S
BATHROOM							
Flooring (vinyl)	S	S	S	S	S	S	S
Hamper - tip-out		S			S	S	
Lavatory cabinet	S	S	S	S	S	S	S
Linen cabinet		S	S		S	S	
Magazine rack	S					S	
Makeup lights (3)	S			S	S		S
Makeup lights (4)		S	S			S	
Medicine cabinet(s)	S	S	S	S	S	S	S
Mirror(s) - wall-mounted	S	S	S		S	S	S
Shower door - glass			S		S	S	
Shower door - pleated	S	S			S		
Shower/tub - shower head	S	S	S	S	S	S	S
Sink - oval, w/ledge back	S	S	S	S	S	S	S
Skylight & shower light	S	S	S	S	S	S	S
Tissue holder	S	S	S	S	S	S	S
Toilet w/sprayer & foot pedal - porcelain	S	S	S	S	S	S	S
Towel bar	S		S			S	S
Towel rack - 3 rods, built into bath door	S	S	S	S	S	S	S
Towel ring(s)		S	S	S	S		S
EXTERIOR							
Awning rail	S	S	S	S	S	S	S
Awning* patio	O	O	O	O	O	O	O
Bumpers - rustproof, front: steel reinforced, rear: formed aluminum w/end caps	S	S	S	S	S	S	S
Entrance door w/screen door - latch & deadbolt locks, electric steps	S	S	S	S	S	S	S
Graphics package - choice of charcoal metallic or light silver metallic	S	S	S	S	S	S	S

S Standard
O Optional

	30A	32T	33B	34H	34V-P	35C	37G
Holding tanks (heated compartment)	S	S	S	S	S	S	S
Ladder/mud flaps - rear	S	S	S	S	S	S	S
Outlet - 110-V, curbside	S	S	S	S	S	S	S
Porch light - w/interior switch	S	S	S	S	S	S	S
Service center (electrical) - cable TV input, power cord, telephone input	S	S	S	S	S	S	S
Service Center (water/drainage) - city water hook-up, tank diverter fill on 33B, drainage valves, exterior wash station w/pump switch, sewer hose	S	S	S	S	S	S	S
Sewer hose	S	S	S	S	S	S	S
Storage compartments - heated rear storage compartment*, locks, gas struts, single paddle latch, lights	S	S	S	S	S	S	S
Tire tools - wrench, leverage bar, hoist rod (NA on 34V-P)	S	S	S	S		S	S
Trailer towing package w/hitch	S	S	S	S	S	S	S
Trailer wiring extension	S	S	S	S	S	S	S
Trunk* - access to underbed storage (NA w/twin bed option)	S	S	S			S	
Undercoating*	O	O		O	O	O	O
Water fill door - lockable, water system drain	S	S	S	S	S	S	S
Wheel covers	S	S	S	S		S	S
Wheel liners - stainless steel	O	O	O	O	S	O	O
Wheels - stylized aluminum					O		
SYSTEMS							
30-amp. power cord	S	S	S	S	S	S	S
50-amp. power cord*		O	O	O	O	O	O
Air-conditioner, ducted (Coleman) - roof, 14,800-BTU	S						
Air-conditioners, ducted (Coleman) - roof, front/rear		S	S	S	S	S	S
Automatic changeover switch - shoreline/generator	S	S	S	S	S	S	S
Auxiliary automotive heater (rear)			S				
Batteries (2) - deep cycle RV	S	S	S	S	S	S	S
City water hook-up	S	S	S	S	S	S	S
Electrical control center - 120-V AC/12-V DC, 15-amp. battery charger, 45-amp. conv., DC automotive fuses, AC circuit breakers	S						
Electrical distribution system - breaker panels, 45-amp. converter/charger	S	S	S	S	S	S	S
Furnace - 35,000-BTU	S	S					
Furnace - 40,000-BTU			S	S	S	S	S
Generator prep kit - fuel line (NA 34V), 12-V wiring	S	S	S	S	S	S	S
Generator* (Onan) - 4,000 or 5,000-watt, gas	S	S	S	S	S	S	S
Generator* (Onan) - 6,500-watt, gas (LP 34V)	O	O	O	S	O	O	O
Generator* (Onan) - 7,500-watt quiet diesel					O		
Holding tank flushing system - black tank			S				
HWH hydraulic leveling jacks* - front & rear	O	O	S	O	S	O	S
Inverter* (Heart InterFace®) - 110-V for TV/VCR, 130-watt	O	O	O	O	O	O	O
LP tank - permanent mount w/gauge	S	S	S	S	S	S	S
Monitor panel - water, holding & LP tank levels, battery condition gauge, water heater ignition switch w/pilot indicator light, water pump switch, located in galley	S	S	S	S	S	S	S
PowerLine Energy Management System		S	S	S	S	S	S
Water heater - 6-gal., electronic ignition			S		S		
Water heater (Motoraid) & rear auto. heater	S	S		S		S	S
Water heater winterization by-pass valve	S	S	S	S	S	S	S
Water pump (demand) - accumulator tank	S	S	S	S	S	S	S
Water system winterizing valve	S	S	S	S	S	S	S
SAFETY							
3-point retracting seat belts (drv./frt. pass.)	S	S	S	S	S	S	S
Assist handle* - interior & exterior	S	S	S	S	S	S	S
Assist strap - interior	S	S	S	S	S	S	S
Carbon monoxide detector/alarm	S	S	S	S	S	S	S
Fire extinguisher (10-B.C.)	S	S	S	S	S	S	S
Ground fault interrupter	S	S	S	S	S	S	S
High mount brake light	S	S	S	S	S	S	S
Lap belts - in selected areas	S	S	S	S	S	S	S
LP leak detector/smoke detector/alarm	S	S	S	S	S	S	S
Windshield - laminated safety glass mounted in steel, window - escape	S	S	S	S	S	S	S
WARRANTY							
12 month/15,000 mile basic warranty, 36 month/36,000 mile warranty on structure,** 10 year limited parts & labor warranty on roof	S	S	S	S	S	S	S

∠ Capacities shown are tank manufacturer's listed water capacity (W.C.). Actual filled LP capacity is 80% of listing due to safety shut-off required on tank.

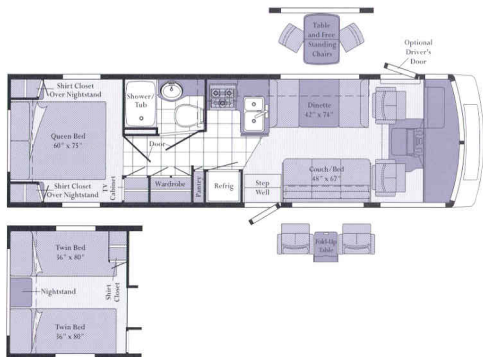
* The height of each model is based on the curb weight of a typically equipped unit on the standard chassis. The actual height of your vehicle may vary by as much as 2" depending on chassis or equipment variations.

** Not all options available in combination. See dealer for details.

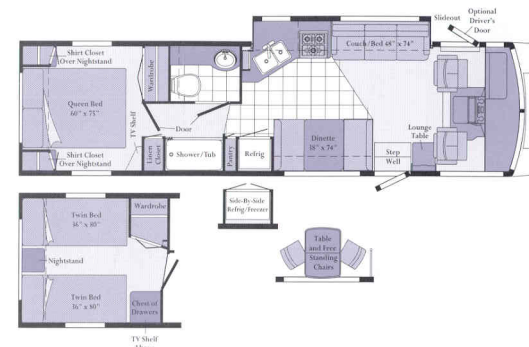
** See your dealer for complete warranty documentation information.

NA Not Available.

OUR POPULAR ADVENTURER MODEL FEATURES A VARIETY OF FLOORPLANS



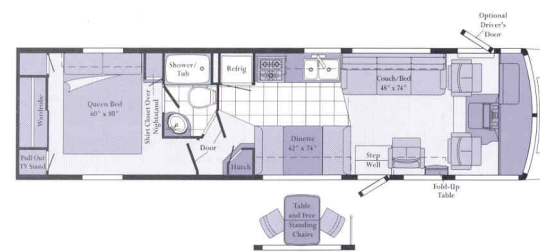
- Widebody basement design.
- L-shaped galley.
- Queen or twin bed option.
- Numerous floorplan options.



- Galley/couch slideout model.
- **STOREMORE** HYDRAULIC LIFTING SYSTEM
- Widebody basement design.
- Spacious split bath area.



- Widebody basement design.
- Queen or twin bed option.
- Numerous floorplan options.



- Widebody basement design.
- Large rear wardrobe.
- Spacious private bedroom.
- Side aisle floorplan.



Our high standards

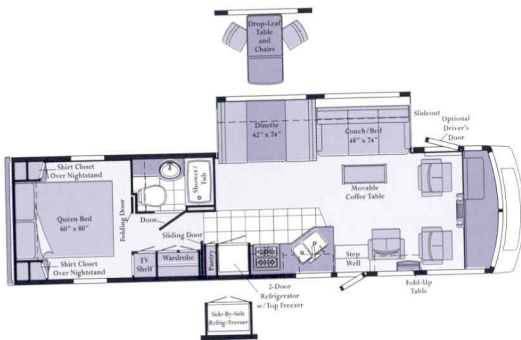
made us one of the first motor home manufacturers to earn the title "Qualified Vehicle Modifier," identifying us as a leader among companies who build on Ford chassis.



Standard Vinyl Flooring



TAILORED TO FIT YOUR LIFESTYLE.



34V-P

- Diesel pusher model.
- Widebody basement design.
- Couch/dinette slideout model.



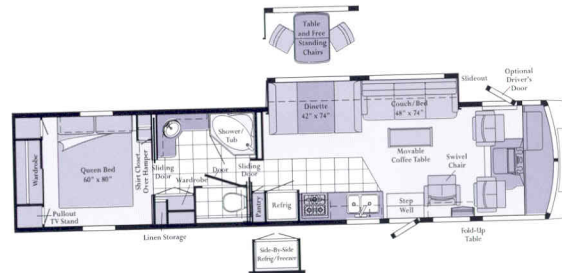
35C

- Widebody basement design.
- Queen or twin bed option.
- Numerous floorplan options.



35C with slideout.*

- Widebody basement design.
- Queen or twin bed option.



37G

- Widebody basement design.
- Couch/dinette slideout model.
- **STOREMORE** HYDRAULIC LIFTING SYSTEM
- Spacious bath.
- Large wardrobe.

*Optional driver's door not available on Chevrolet Chassis.
Widebody designs are over 96" wide. Some states restrict access on some or all state roads to 96". You should confirm the road usage laws in the states of interest to you.
Note: Dimensions shown are for sleeping space only, and dashed lines denote overhead storage areas.



INTERIORS

Sunshowers
with Waterford Oak
or Mystic Oak



Vintage Grove
with Waterford Oak
or Mystic Oak

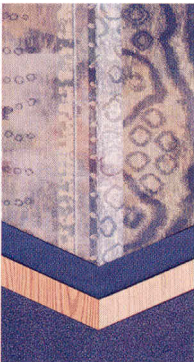


Every motor home interior is stitched, constructed, sanded and stained with care in our factory by our own employees. We even perform extensive wear tests to ensure long-lasting durability. This concept is called Home Comfort Design, and it gives us complete control over the fit and finish of the final product. We take great pride in offering you high-quality, handcrafted living spaces to match your lifestyle.

Juniper
with Waterford Oak
or Mystic Oak



Chameleon
with Waterford Oak
or Mystic Oak



EXTERIOR VALANCE PANELS



Charcoal

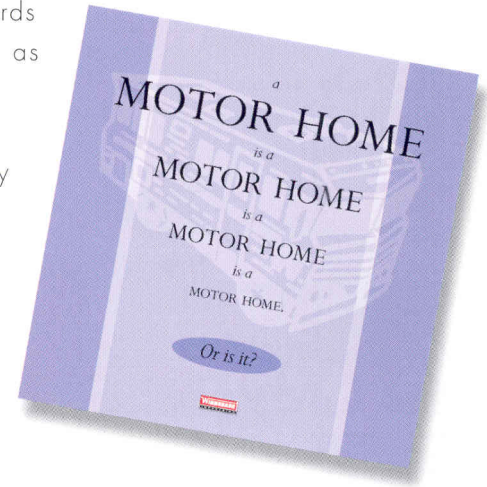


Lt. Silver

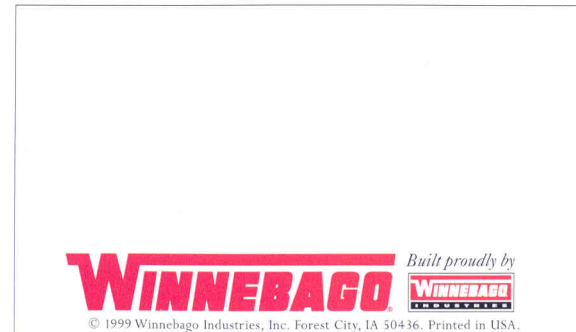
Exterior graphics packages are Charcoal Metallic or Light Silver Metallic. You may order either exterior color, regardless of the interior color and wood combination you choose.

Ask for the Winnebago Industries buyer's guide and discover why all motor homes are not created equal.

The process of buying a motor home can be intimidating, even if you're a veteran. And in a market saturated with flashy first impressions, the true signs of quality are often hard to spot. So we've put together a user-friendly guide to help you make some educated observations as you compare Winnebago Industries motor homes to the competition. It explains our uniquely superior on-site manufacturing processes, highlights the importance of meeting (and exceeding) industry standards and, best of all, it's free. Use it as a reference tool when shopping around, or familiarize yourself with some key safety and quality considerations. Ask for the guide next time you visit your Winnebago Industries dealer, and upgrade your motor home buying savvy.



Visit us at www.winnebagoind.com



Seat belts are your most important hookup. Always buckle up.