

Adventurer

WINNEBAGOTM



Why Adventurer?

- TrueAir® Maximum Comfort A/C
- Available Infotainment Center with Rand McNally RV GPS
- Residential refrigerator (32D, 38Q, optional 37F)
- MCD solar/blackout roller shades
- Ultraleather™ swivel cab seats
- Corian® countertops
- Glass mosaic tile backslash
- Hardwood cabinet finishes
- Motoraid auxiliary coach heat system
- Tinted, dual-glazed, thermo-insulated Contour™ windows
- Powered patio awning with LED lighting and metal wrap
- Standard electric fireplace (32D, 38Q)
- Available stackable washer/dryer



On the Cover: 38Q Sapphire Full-Body Paint

38Q Splendor with Coffee-Glazed Vienna Maple Cabinetry

Adventure at Every Turn

You'll be prepared for almost anything when you combine diesel-pusher style and luxury with the affordability of a Class A gas coach—that's the promise of the Adventurer.® Four stunning floorplans allow you to choose the design that suits your lifestyle. As our flagship Class A gas coach, the Adventurer offers deluxe user-friendly features such as Ultraleather™ furniture,

MCD solar/blackout roller shades, frameless dual-pane Contour™ windows, and LED lighting that saves energy while you travel. And this year, we're introducing several new upscale amenities to the Adventurer's layout including a glazed finish on all wood choices and an available tankless water heater. Embrace your Class A lifestyle in the luxurious Adventurer.



Recognized Quality The Recreation Vehicle Dealer Association annually rates RV manufacturers and awards the Quality Circle Award to manufacturers that provide exceptional products, service, and support. Winnebago is proud to be the only manufacturer that has received this award every year since its inception.

Best in Class

See how Winnebago takes motorhome design and function to the next level, and why we've earned the right to be called the Most Recognized Name in Motorhomes.®



Click on this icon throughout the brochure to link to more information on the web.



Choose a set of two plush **Ottomans** (38Q) for extra storage and seating or to rest your legs while relaxing on your sofa.



Day or night, the smooth-retracting **MCD Solar/Blackout Roller Shades** give you total control over light and privacy levels.



Full-Extension Drawer Slides make it easy to open drawers wide and maximize their storage space.



Important gauges, switches, and controls are all centrally located in the **OnePlace® Systems Center**.



The **Rest Easy® Extendable Sectional Sofa** (38Q) glides from a sofa to a lounge to a bed at the touch of a button.



38Q Splendor with Coffee-Glazed Vienna Maple Cabinetry

Relax in style in this luxurious lounge featuring a Rest Easy sofa (NA 32D), a Euro recliner with a hoop base that allows the recliner to be moved when the coach is parked (37F, 38Q), and an impressive entertainment center that includes an HDTV. You'll appreciate the control that comes with the MCD solar/blackout roller shades, Blu-ray™ Home Theater Sound System, and inLounge™ sofa (32D). With the standard electric fireplace (32D, 38Q) and the Contour™ frameless, dual-pane windows, it's easy to unwind at the end of a long day.



Euro Chair Recliner



Entertainment Center



38Q Galley

Enjoy the useful preparation space on the high-gloss Corian® solid-surface countertops with a flip-up countertop extension and plentiful cabinet space with this upscale L-shaped galley. You can create culinary masterpieces with the microwave/convection oven while the new faucet with a pull-out sprayer makes cleanup easy. Also enjoy the new stylish galley backsplash and glazed finish on all wood choices.



Flip-up Countertop Extension



Microwave/Convection Oven



38Q French Door Refrigerator/Freezer



38Q Pull-Out Pantry



3-Burner Range Top



38Q Glide & Dine Dining Table with Four Chairs

Enjoy the comforts of home with the inLounge™ and inTable™ (32D) which can be moved to your preferred position and expand for dining for six. Other popular options include the BenchMark® full comfort dinette with additional storage (35P) and the innovative Glide and Dine table and chairs arrangement with a buffet (37F, 38Q) and a retractable HDTV (37F only).



38Q Glide & Dine Dining Table



38Q Glide & Dine Dining Table



38Q Bedroom

The spacious master suite offers luxurious sleeping comfort in a king or queen bed on the Ideal Rest® Natural Reserve digital comfort control mattress, allowing you to individually adjust the firmness on each side of the bed (standard 37F, 38Q, and available 32D, 35P). A cotton and bamboo fiber cover with a duo firmness reversible insert adds to your total comfort. Whether you like to unwind with a book or relax with a movie on the large HDTV, you can position the powered king bed at the touch of a button (37F, 38Q).



38Q Bedroom HDTV



Bath Vanity



38Q Wardrobe



Dash

Superior comfort and control are yours the minute you get behind the wheel. Thanks to the sideview camera system, AM/FM/CD/DVD radio with Rearview Monitor System, and available Infotainment Center with Rand McNally RV GPS, you'll be ready for anything that comes your way. Other cab conveniences include 12-volt powerpoints, map lights, a powered MCD solar/blackout front shade, and a dash workstation.



Powered Mirrors with Defrost

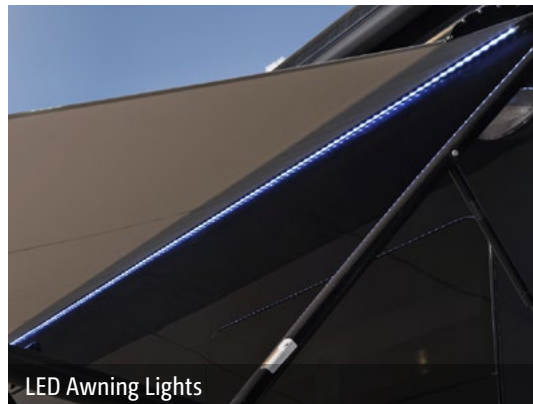


Cab Seats Reclined



38Q Powered Patio Awning with LED Lighting

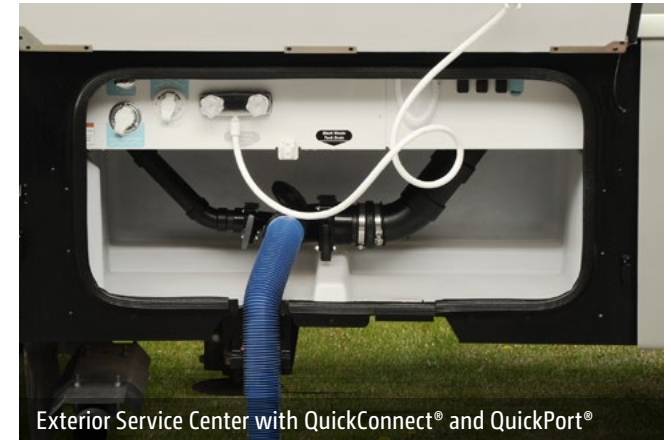
Now you can enjoy the same level of stylish comfort outside your Adventurer as you do inside. Relax in the open air under the shade of a powered patio awning with an available exterior entertainment center featuring an HDTV. The leveling jacks include 3-position controls, allowing you to level the coach from the cab, service center, or the entrance door. With ergonomic controls and color-coded labels in the service center, you'll be impressed with how quick and easy hookups can be.



LED Awning Lights



Available Exterior Entertainment Center



Exterior Service Center with QuickConnect® and QuickPort®



Stylized Aluminum Wheels

Fiberglass Roof

The crowned, one-piece fiberglass roof is backed by a 10-year limited parts-and-labor roof skin warranty.

Thermo-Panel® Sidewalls By layering fiberglass and high-density block foam insulation with welded aluminum support structures, we create some of the industry's strongest, most durable and lightweight sidewalls.

E-Coating An electrodeposition coating helps protect critical steel components.

Embedded Steel Metal substructures embedded into the sidewall provide solid attachment points to keep cabinets and appliances mounted securely in place.

Solid Framework Aluminum extruded in our own facility to our exacting standards creates an extremely strong and solid structural framework.

Laser-Cut Tubing

Precision laser cutters create precise joints in structural steel that are stronger and require less welding.



Interlocking Joints

Specially engineered interlocking joints connect the floor, sidewalls and roof where competitors often rely on simple screws to bear the weight.

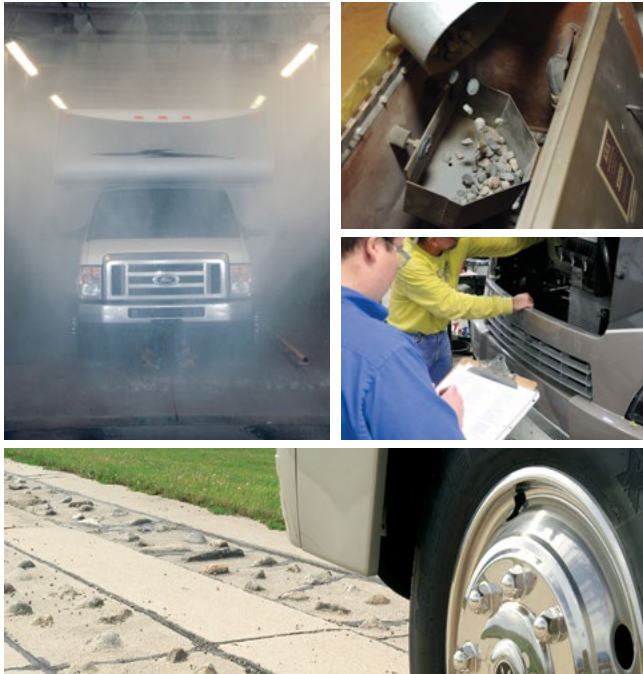


SUPER STRUCTURE

BUILT TO LAST

Every coach—from our smallest Class C to our largest diesel-pusher model—is built to Winnebago's® legendary SuperStructure® construction standards. It's a process developed and refined over more than 50 years of building some of the strongest, most durable coaches in the industry.

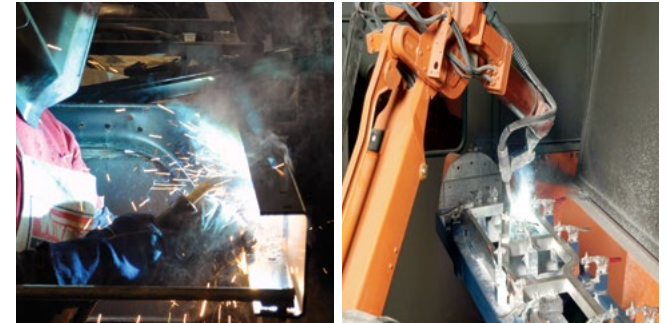
TESTING Before rolling out of our factories, every coach undergoes an extensive 113-point inspection. Each coach also passes a high-pressure water test that simulates rain at a rate of 50-inches per hour to check for leaks. During the design process, our computer simulations, physical testing center, and rigorous test track ensure each model is built to last.



DETAILS At Winnebago, we treat the features you can't see with the same care as the ones you can. Look in the access panels of some of our competitors' coaches and you'll see loose insulation and wires haphazardly strewn about. Winnebago maintains a clean fit and finish throughout so your coach will last for the long haul.



BUILT IN-HOUSE We extrude our own aluminum. We rotocast our own plastic components. In fact, we manufacture most of our own parts so they are designed to fit the space, rather than fitting the space to an awkward off-the-shelf component size.



SUPER STRUCTURE
BUILT TO LAST

Visit BetterBuiltRVs.com to gain real insight into what goes into a Winnebago motorhome.

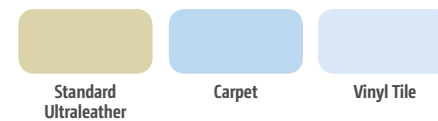
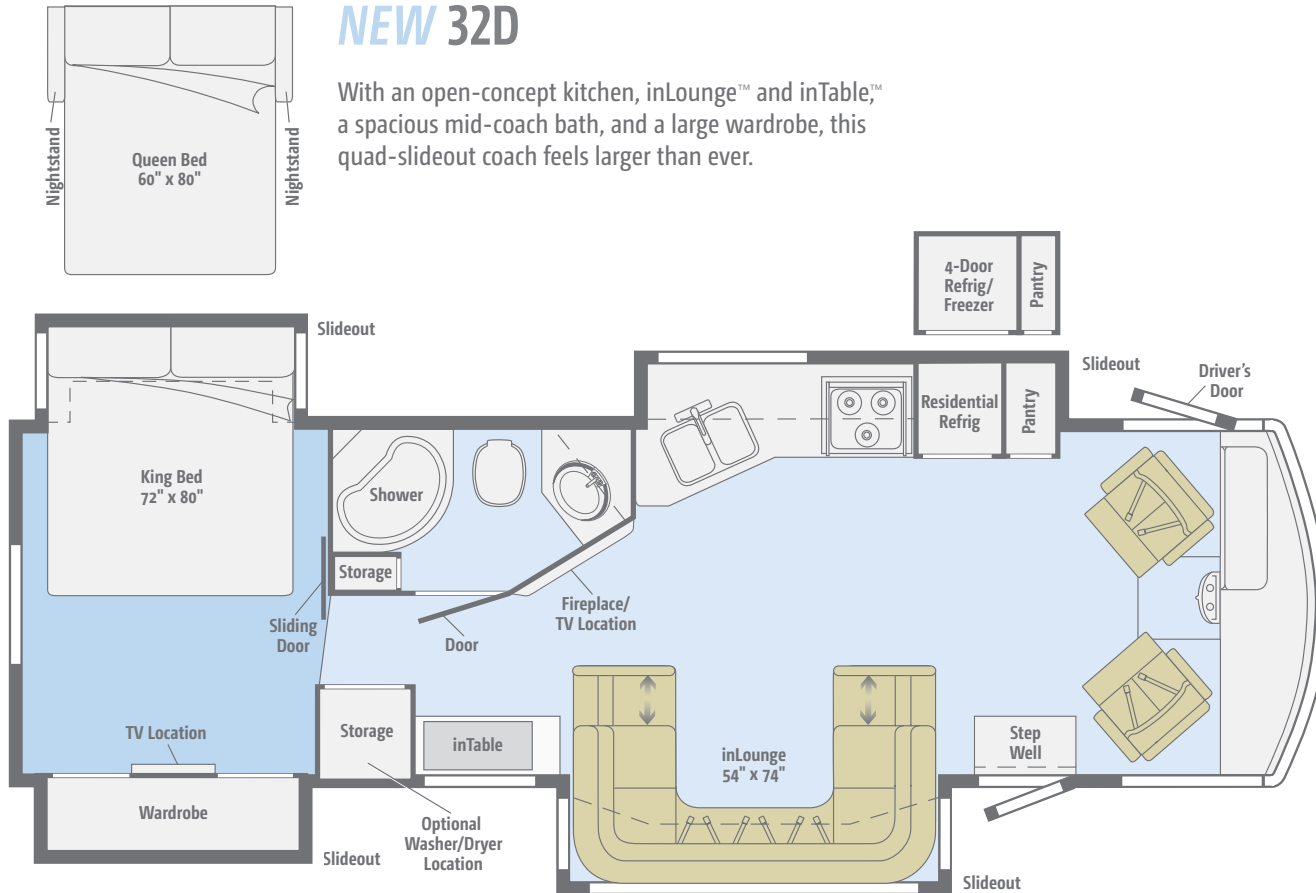
TAKE A TOUR We're proud of our processes, state-of-the-art facilities, and the people who make Winnebago number one. We invite you to visit our complex in Forest City, Iowa, for a firsthand look at the dedication and technology behind every motorhome we build.

Call 641-585-6936 or 1-800-643-4892 or visit us online at WinnebagoIнд.com/company/visit for more information.

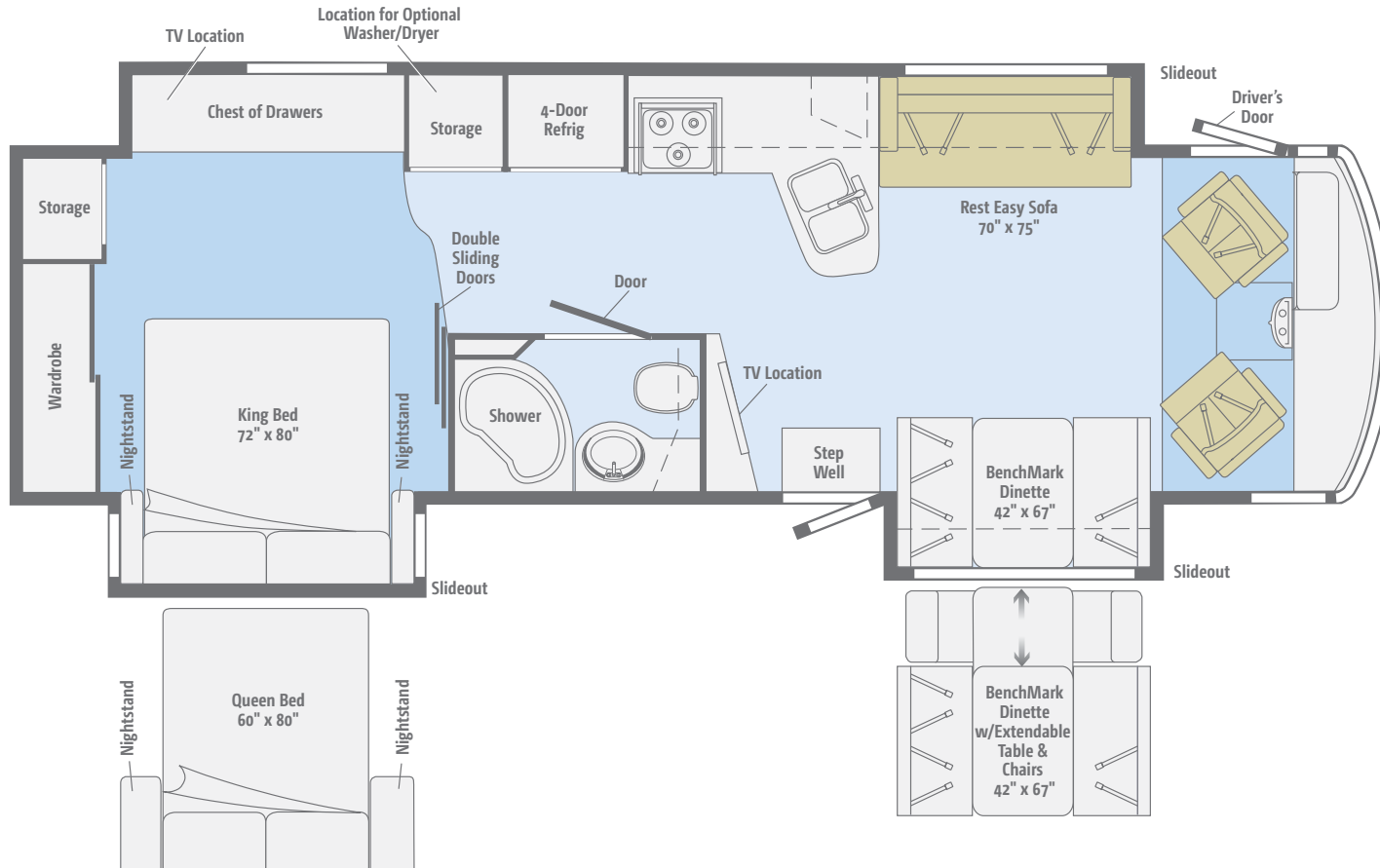


NEW 32D

With an open-concept kitchen, inLounge™ and inTable™, a spacious mid-coach bath, and a large wardrobe, this quad-slideout coach feels larger than ever.

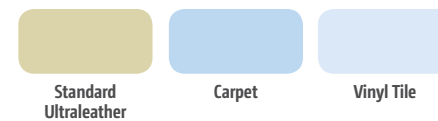


Dimensions shown are for sleeping space only and may vary due to styling differences. Dashed lines denote overhead storage areas. Floorplans and specifications are also available online at WinnebagoInd.com.

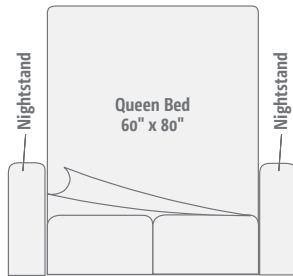
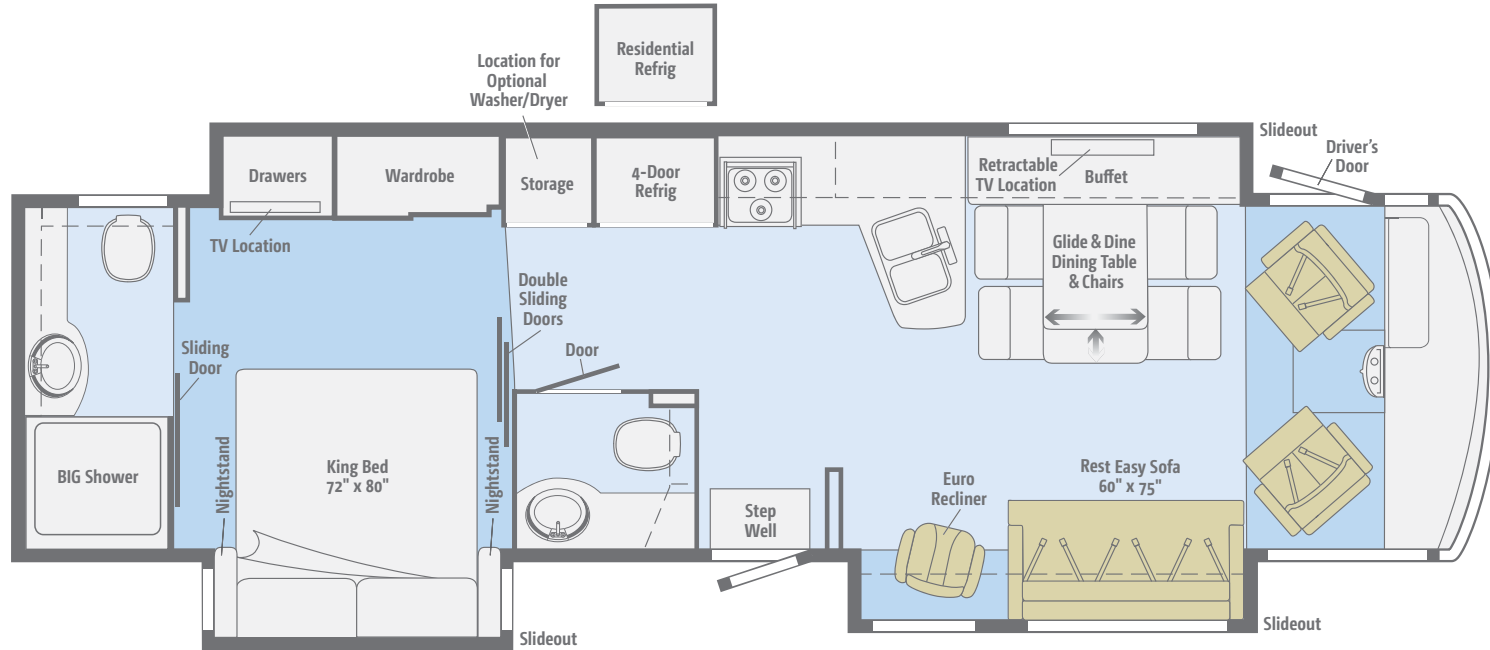


35P

This impressive triple-slideout floorplan includes a full-wall slide and features a Rest Easy® sofa and a master bedroom with a king bed, large wardrobe, and a chest of drawers.

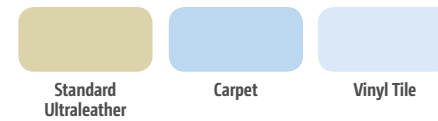


Dimensions shown are for sleeping space only and may vary due to styling differences. Dashed lines denote overhead storage areas. Floorplans and specifications are also available online at WinnebagoInd.com.

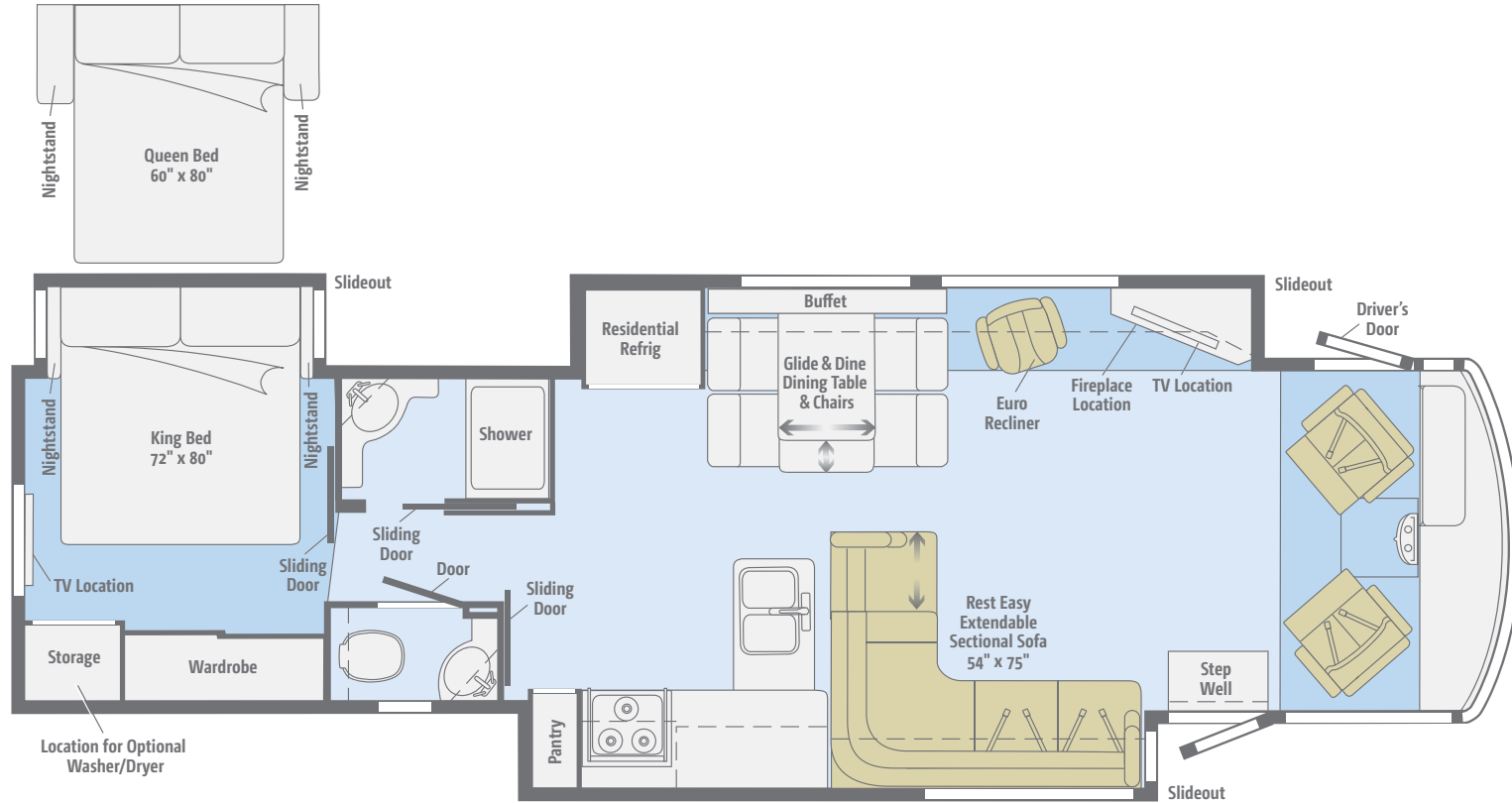


37F

Highlights of this triple-slideout floorplan include a full-wall slide, a Rest Easy sofa and Euro recliner, a mid-coach guest bath, and a master bath featuring the BIG Shower.



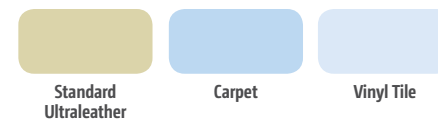
Dimensions shown are for sleeping space only and may vary due to styling differences. Dashed lines denote overhead storage areas. Floorplans and specifications are also available online at WinnebagoInd.com.



38Q

This spacious triple-slideout floorplan boasts a welcoming lounge area with a Rest Easy Extendable Sectional Sofa, a cross-aisle split bath, and your choice of a powered king or queen bed.

2 Ottomans



Dimensions shown are for sleeping space only and may vary due to styling differences. Dashed lines denote overhead storage areas. Floorplans and specifications are also available online at WinnebagoInd.com.

Choose from three fabric collections and three glazed wood finishes.

Splendor



Main



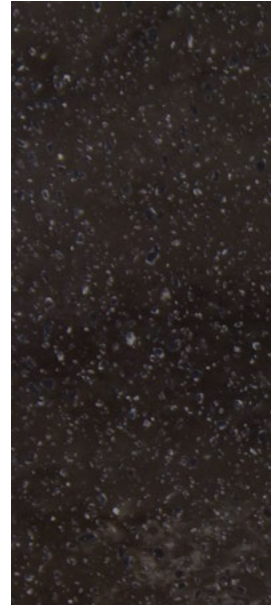
Ultraleather



Accent



Bedspread



Corian Countertop



Wall Board



Carpet



Vinyl Tile



Coffee-Glazed
Honey Cherry



Coffee-Glazed
Vienna Maple



Glazed Java

Winnebago reserves the right to change décor materials and specifications without notice or obligation.

Choose from three fabric collections and three glazed wood finishes.

Jet Stream



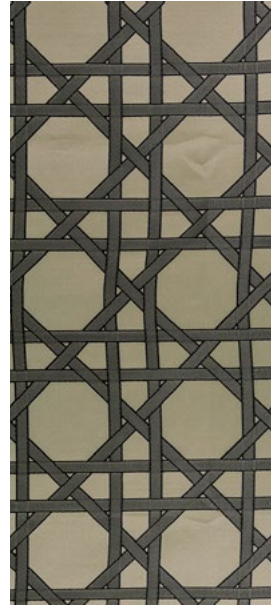
Main



Ultraleather



Accent



Bedsread



Corian Countertop



Wall Board



Carpet



Vinyl Tile



Coffee-Glazed
Honey Cherry



Coffee-Glazed
Vienna Maple



Glazed Java

Winnebago reserves the right to change décor materials and specifications without notice or obligation.

Choose from three fabric collections and three glazed wood finishes.

Mirage



Main



Ultraleather



Accent



Bedspread



Corian Countertop



Wall Board



Carpet



Vinyl Tile



Coffee-Glazed
Honey Cherry



Coffee-Glazed
Vienna Maple



Glazed Java

Winnebago reserves the right to change décor materials and specifications without notice or obligation.

Adventurer Paint

WINNEBAGO^{IND}

Full-body paint comes standard in the style of your choice.



Vermilion
FULL-BODY PAINT



Sapphire
FULL-BODY PAINT

Adventurer Paint

Full-body paint comes standard in the style of your choice.



Buckskin
FULL-BODY PAINT



Black Walnut
FULL-BODY PAINT

Weights & Measures

| | 32D | 35P | 37F | 38Q |
|--|---------------------|--|---------------------|---------------------|
| Length | 34'6" | 35'11" | 37'9" | 39'3" |
| Exterior Height ¹ | 12'5" | 12'5" ^A /12'6" ^B | 12'6" | 12'6" |
| Exterior Width ² | 8'5.5" | 8'5.5" | 8'5.5" | 8'5.5" |
| Exterior Storage ³ (cu. ft.) | 103.3 | 125.5 | 121.7 | 121.9 |
| Awning Length | 18' | 17' | 18' | 14' |
| Interior Height | 7' | 7' | 7' | 7' |
| Interior Width | 8'0.5" | 8'0.5" | 8'0.5" | 8'0.5" |
| Freshwater Capacity w/Heater ⁴ (gal.) | 58 | 78 | 78 | 63 |
| Water Heater Capacity | 10 | 10 | 10 | 10 |
| Optional Water Tank Capacity (gal.) | Continuous | Continuous | Continuous | Continuous |
| Holding Tank Capacity - Black/Gray ⁴ (gal.) | 56/40 | 43/57 | 52/71 | 75/79 |
| LP Capacity ⁵ (gal.) | 23 | 28 | 28 | 28 |
| Fuel Capacity (gal.) | 80 | 80 | 80 | 80 |
| GCWR ⁶ (lbs.) | 26,000 ^A | 26,000 ^A /30,000 ^B | 30,000 ^B | 30,000 ^C |
| GVWR (lbs.) | 22,000 ^A | 22,000 ^A /24,000 ^B | 24,000 ^B | 26,000 ^C |
| GAWR - Front (lbs.) | 8,000 ^A | 8,000 ^A /9,000 ^B | 9,000 ^B | 9,000 ^C |
| GAWR - Rear (lbs.) | 15,000 ^A | 15,000 ^A /15,500 ^B | 15,500 ^B | 17,500 ^C |
| Wheelbase | 228" | 228" | 248" | 248" |

^A Ford F53 22,000-lb. Chassis w/22.5" tires ^B Ford F53 24,000-lb. Chassis w/22.5" tires ^C Ford F53 26,000-lb. Chassis w/22.5" tires

Ford® F53 Chassis

22,000-lb. Chassis 362-hp 6.8L V10 SEFI Triton® engine, TorqShift™ 5-speed automatic overdrive transmission w/tow/haul, Hydro-Max brakes w/4-wheel ABS, 175-amp. alternator (32D, 35P)

24,000-lb. Chassis (37F)

26,000-lb. Chassis (38Q)

7-pin trailer wiring

Trailer Hitch⁸ 5,000-lb. drawbar/500-lb. maximum vertical tongue weight

Stylized aluminum wheels

Hydraulic leveling jacks w/3-position controls

OPTIONAL EQUIPMENT

24,000-lb. Chassis (35P)

Cab Conveniences

Radio/Rearview Monitor System 6" LCD color touch screen, remote, iPod®/MP3 input, rear color camera

Chassis/house battery radio power switch

Cab seats adjustable armrests, fixed lumbar support, multi-adjustable slide/recline/swivel

6-way power driver seat

3-point seat belts

Defroster fans

Cab sound control package

Cruise control

12-volt powerpoints

Map lights

Power steering w/tilt wheel

Dash workstation

Power mirrors w/defrost and sideview cameras

MCD solar/blackout powered front shade

Privacy curtain driver and passenger windows

Solar shades driver and passenger windows

OPTIONAL EQUIPMENT

Infotainment Center with Rand McNally RV GPS 6" touch screen color monitor w/split screen function, Rand McNally RV GPS safe & easy routing, amenities & tools, trips & content, turn-by-turn voice guidance, AM/FM radio w/CD/DVD player, handheld remote, SiriusXM™ (subscription not included), compass, outside temperature, iPod/iPhone® audio integration, Bluetooth™ color rearview camera

Passenger seat w/footrest

Interior

Dining table/buffet/chairs w/retractable 47" HDTV (37F)

Entertainment center w/42" HDTV (32D)

Entertainment center w/47" HDTV (35P, 38Q)

Amplified digital HDTV antenna system

Blu-ray™ Home Theater Sound System amplifier, CD/DVD player, iPhone®/iPod dock w/video, receiver, 5 speakers, and subwoofer

OnePlace® systems center

Satellite system ready (lounge and bedroom)

MCD solar/blackout roller shades (in select areas)

Contour™ windows tinted, dual-glazed, thermo-insulated

LED ceiling and accent lighting

Soft vinyl ceilings

HDMI Matrix central video selection system

Powered ventilator fan (galley)

Powered roof vent(s) (bath)

Washer/dryer prep

Electric fireplace (32D, 38Q)

OPTIONAL EQUIPMENT

Winegard® Mission® in-motion TV antenna system

Winegard Trav'ler® automatic HDTV antenna system

Stackable washer/dryer

Vinyl tile throughout (slideouts and cab carpeted) (slideouts carpeted 32D)

Galley

Corian® solid-surface high-gloss countertop, flip-up extension (NA 32D), and decorative backsplash

Microwave/convection oven w/range fan

3-burner range top w/storage below

Corian sink and range covers

2-door residential refrigerator/freezer w/icemaker (32D)

4-door 2-way refrigerator/freezer w/icemaker (35P, 37F)

French door residential refrigerator, counter-depth, stainless steel, interior water dispenser, icemaker, and glide-out bottom drawer freezer (38Q)

Cold water filtration system

OPTIONAL EQUIPMENT

French door residential refrigerator, counter-depth, stainless steel, interior water dispenser, icemaker, and glide-out bottom drawer freezer (37F) (includes 4 AGM batteries)

3-burner range w/oven

4-door 2-way refrigerator/freezer w/icemaker (32D) (includes 2 Group 31 batteries)

Bath

Textured glass shower door

Flexible showerhead

Corian countertop w/decorative backsplash

Skylight (32D, 35P)

Water pump switch(es)

Porcelain toilet

Electric toilet (37F rear bath)

Bedroom

Powered king bed w/Ideal Rest® Natural Reserve digital comfort control mattress w/remotes (37F, 38Q)

King bed w/innerspring mattress and storage below (32D, 35P)

28" HDTV (37F)

32" HDTV (32D, 35P, 38Q)

Bedsread, pillow shams, and pillows

Ceiling fan

OPTIONAL EQUIPMENT

King Ideal Rest Natural Reserve digital comfort control mattress w/remotes (32D, 35P)

Queen Ideal Rest Natural Reserve digital comfort control mattress w/remotes (32D, 35P)

Queen bed w/innerspring mattress and storage below (32D, 35P)

Powered queen bed w/Ideal Rest Natural Reserve digital comfort control mattress w/remotes (37F, 38Q)

Exterior

Driver's side service light

TriMark® KeyOne™ lock system

Lower front protective mask

Porch light

Automatic entrance steps

Powered entrance awning (38Q)

Powered patio awning w/LED lighting and metal wrap

Ladder

Front and rear mud flaps

Lighted storage compartments (in select compartments)

OPTIONAL EQUIPMENT

Exterior Entertainment Center 32" HDTV

Heating & Cooling System

35,000 BTU low-profile furnace (32D)

40,000 BTU low-profile 2-speed furnace (35P, 37F, 38Q)

TrueAir® Maximum Comfort A/C 2-13,500 BTU, low-profile air conditioners w/heat pumps

Motoraid auxiliary coach heat system

Electrical System

AC/DC distribution system

45-amp. converter/charger (35P)

Service Center cable TV input, 50-amp. power cord, QuickPort® service connection hatch, portable satellite dish hookup

Cummins Onan® Energy Command™ automatic generator start system

Exterior AC duplex receptacle

5,500-watt Cummins Onan Marquis Gold™ generator

1,000-watt inverter (35P)

2,000-watt inverter/charger (32D, 37F, 38Q)

PowerLine® Energy Management System

Auxiliary start circuit

2 deep-cycle Group 31 batteries (35P, 37F)

4 deep-cycle Marine/RV sealed AGM batteries (32D, 38Q)

Battery disconnect systems (coach and chassis)

Automatic dual-battery charge control

Generator/shoreline automatic changeover switch

OPTIONAL EQUIPMENT

100-watt solar panel/battery charger

Plumbing System

LPG accessory connection (patio area)

Service Center QuickPort service connection hatch, exterior wash station w/pump switch, pressurized city water hookup w/diverter valve, drainage valves, 10' sewer hose

Black tank flushing system

Permanent-mount LP tank w/gauge

TrueLevel™ holding tank monitoring system

On-demand water pump

Heated holding tank compartment

Winterization Package water heater bypass valve and siphon tube

10-gallon water heater, 110-volt/LP w/motoraid auxiliary hot water supply system

Gravity water tank fill w/lockable door

OPTIONAL EQUIPMENT

Tankless water heater

Safety

Child seat tether anchor (dinette) (35P)

LP, smoke, and carbon monoxide detectors

10 BC fire extinguisher

Ground fault interrupter

Fog lamps

High-mount brake lamps

Warranty⁷

12-month/15,000-mile basic limited warranty⁸

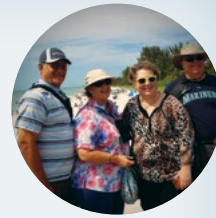
36-month/36,000-mile limited warranty on structure⁸

10-year limited parts-and-labor warranty on roof skin⁸

FOOTNOTES

- 1 The height of each model is measured to the top of the tallest standard feature and is based on the curb weight of a typically equipped unit. The actual height of your vehicle may vary by several inches depending on chassis or equipment variations. Please contact your dealer for further information.
- 2 Floorplans feature a wide-body design - over 96" In making your purchase decision, you should be aware that some states restrict access on some or all state roads to 96" in body width. Before making your purchase decision, you should confirm the road usage laws in the states of interest to you.
- 3 The load capacity of your motorhome is designated by weight, not by volume, so you cannot necessarily use all available space when loading your motorhome.
- 4 Capacities are based on measurements prior to tank installation. Slight capacity variations can result due to installation applications.
- 5 Capacities shown are tank manufacturer's listed water capacity (W.C.) Actual filled LP capacity is 80% of listing due to overfilling prevention device on tank.
- 6 Actual towing capacity is dependent upon your particular loading and towing circumstances, which includes the GVWR, GAWR and GCWR as well as adequate trailer brakes. Please refer to the Operator's Manual of your vehicle for further towing information.
- 7 See separate chassis warranty.
- 8 See your dealer for complete warranty information.

Winnebago's continuing program of product improvement makes specifications, equipment, model availability, and prices subject to change without notice. Published content reflects the most current product information at time of printing. Please consult your dealer for individual vehicle features and specifications.



Let us host your next

Adventure

Over 20 Tours in 2015



WGOAdventures.com



Show your Winnebago love with high-quality gifts and wearables.



Apparel | Gifts | Parts | Gear

WinnebagoOutdoor.com

Find your style



Connect with Winnebago (Click one of the following)



Like us



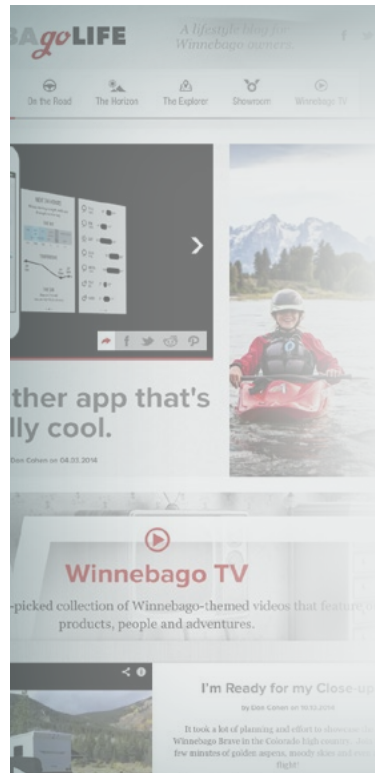
Follow us



Watch now

WinnebagoInd.com Has All The Answers

Visit WinnebagoInd.com on your computer, smartphone, or tablet for the latest product information and updates.



Welcome to GoLife!

Visit our lifestyle blog for motorhome news, personal travelogues, and community stories.

WinnebagoLife.com



LOOK BACK
TELL YOUR STORY
JOIN THE CREW



SEE HOW FAR WE'VE COME
THIS IS NOW
JOIN THE CREW

WINNEBAGO HAS A STORY AND WHAT A STORY IT IS

Looking Back



Take a Drive Down Memory Lane
Our 70th Anniversary begins in the American heartland of Forest City, Iowa over 70 years ago. Here we have...
innovating and building high quality, eye-catching recreation vehicles. Here our story between the wheels.

Tell us your story

The story of Winnebago is about the people who love our products and take their wild enthusiasm on the road. Now we want to hear from *you*—your stories. Please, do tell. We promise, we'll tell everyone! All story submissions will receive a Crew t-shirt. Added bonus: If your story is posted to the website, we'll send you a vintage-style Crew t-shirt. Read more about The Crew below.



WRITE YOUR STORY READ ALL ABOUT IT

Join the Crew

Show Your Pride
We're looking for a few good men and women on wheels. Start here and we want everybody to join The Crew! If you love Winnebago products and want to be part of the fun, you're invited to join The Crew! Show us how you love your motorhome and photos to become part of The Crew.



See How Far We've Come



Then & Now



The Crew is Back
To help you see how far we've come, we're introducing a new feature to our website. We've added a "Then & Now" feature to help you see how far we've come. Click on the "Then & Now" button to see the evolution of our products and services.

SEE TRIBUTE SEE CREW

Add from the Archives



VISIT:
MyWinnebagoStory.com

PREFERRED CARE PROGRAM

We back our motorhomes with best-in-class support both before *and* after the sale:



TRIPSAVER
FAST TRACK PARTS
WINNEBAGO

- 12-month/15,000-mile basic limited warranty
- 36-month/36,000-mile limited warranty on structure
- 10-year limited parts-and-labor warranty on roof skin
- Complimentary 24-hour roadside assistance program
- TripSaver® Fast Track Parts guarantees that in-stock warranty parts ship directly to your dealer within 24 hours
- National dealer service network



For more information, visit us
WGOService.com



From RV to personal insurance, Winnebago RV Insurance can provide all the coverage and services you need to feel at home on the road.

For more information:
(800) 642-4892



CONTACT US

GENERAL INQUIRIES

Corporate Switchboard
(641) 585-3535

CURRENT PRODUCT OWNER AND SERVICE-RELATED INQUIRIES

(800) 537-1885
or@winnebagoind.com

NEW VEHICLE SALES INQUIRIES

sales@winnebagoind.com

FAX

(641) 585-6966

POSTAL ADDRESS

Winnebago, Inc.
P.O. Box 152
Forest City, IA 50436

STREET ADDRESS

Winnebago, Inc.
605 West Crystal Lake Road
Forest City, IA 50436

WIT CLUB

Join the Club, Join the Fun

Here's the perfect way to begin your life on the road as the owner of a new Winnebago – by joining the exclusive WIT Club. Start your adventure with other fun-loving WIT Club members from across the country and get the most out of your new Winnebago motorhome.



Members enjoy:

- Caravans and rallies
- Newsletters
- Local and state group activities
- RV travel benefits

See more at
WITClub.com

©2015 Winnebago
Seat belts are your most important hookup. Always buckle up.



Grand National Rally

G'day mates! Explore the outback at this year's "Down Under" Grand National Rally. Each year, thousands of Winnebago owners descend upon the land down under – a.k.a. Forest City, Iowa.

Rally-goers enjoy an unforgettable week reconnecting with friends, taking tours, participating in activities, and more. Hop on down and join the adventure this July!

