

Adventurer



It's all in our name.

WINNEBAGO

Blazing The Trail.

You could hike the same hills a hundred times, but step from the worn trail, and you begin to experience the forest from a new perspective. The colors become more vivid and even the rustling leaves sound different. It's like discovering the forest for the very first time.

We approached the Adventurer® in much the same way – by leaving the well-walked path of motor home design behind. We've been working for years to develop more comfortable, better handling, structurally stronger motor homes. Figuratively speaking, our new approach helped us blaze a better trail to the summit.

To start off, many competitive motor homes bolt a wooden truss substructure to the chassis. Adventurer's substructure is steel, firmly welded to the chassis. The chassis and substructure work as one, providing the best support for fluid tanks, walls and interior amenities.

Because we also use steel in other crucial areas like the cab cage, we can add automotive features like steel-mounted windshields and wipers. Many motor

homes only fasten these items in fiberglass. Adventurer also offers an exclusive driver's door option. Even more important is a 3-point seat belt secured to the steel cab substructure.

On the advanced steel foundation, we created an extraordinary living area utilizing an innovative process called Home Comfort Design. The comfort is exceptional and, as you would expect, there is an abundance of interior and exterior storage. We treat all fabrics with Scotchgard™ Protector and cover the floor with plush, stain-free carpeting. To take care of you on the road, all purchases include Preferred Care, a program providing 24-hour customer service and road-side assistance.

With the innovative rethinking of the Adventurer, we've taken basement style motor homes to new heights. With 6 superb models, including the new 29RQ, you can understand why we've got the beaten path beat.



Even with 6'8" of interior headroom and a full basement, Adventurer was designed not to look bulky like other large storage motor homes. The front end and wrap-around windshield are angled back for aerodynamics. The running lights are recessed so the line of the front is uninterrupted. And as with other Winnebago® motor homes, the Thermo-Panel® sidewalls will hold their smooth beauty for years.

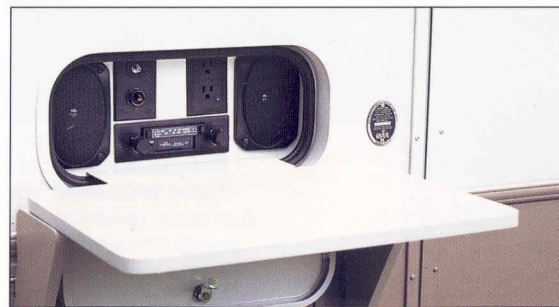
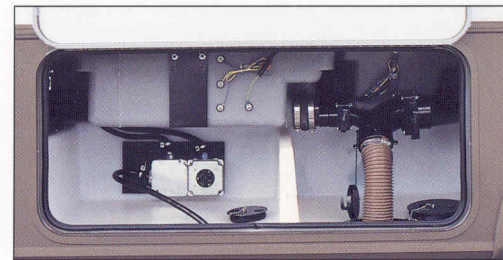


The hood tilts down and out of the way, making it easy to check the fluids. The long wipers are mounted lower so they won't spoil the view and we've anchored them in the steel substructure.



When it comes to practicality, nothing beats having a pull-out shower on the outside. Though it's not a feature found on all motor homes, it's standard on every Adventurer.

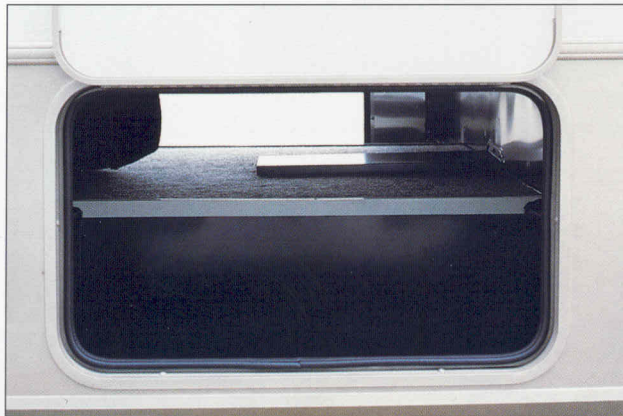
Each section of the heated utility center has its own floor hatch, so the outside door doesn't need to be open while you're using the various connections.



The entertainment center sets you up with a radio and cassette deck as well as a table for a TV. You can plug your TV right into the motor home's antenna system.

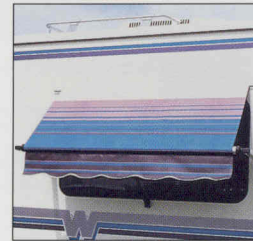


On the 34RQ model, you have the option of adding a rear door. Like the forward entry, it comes with a screen door that's more solidly constructed than those on other competitive motor homes.



There is room in the pass-through storage compartment for the longest walking sticks. As with all compartments, this bay has a weather sealed, radiused-cornered opening and we cover the steel construction with a floor lining. Every storage compartment comes with lights for convenience in the evening.

The largest exterior difference you'll see from floorplan to floorplan is the rear cap on the 34RQ Pusher model shown here. The fully vented engine door swings up for easy maintenance. The ladder and luggage rack are standard on all floorplans, and you have the choice of adding the rear view camera and monitor with an one-way audio system.



An exciting new feature on this year's Adventurer is the new custom vinyl awning option. Anyone who has used awnings before knows how nice it feels to sit in the shade or have that extra roof above the door when it rains.





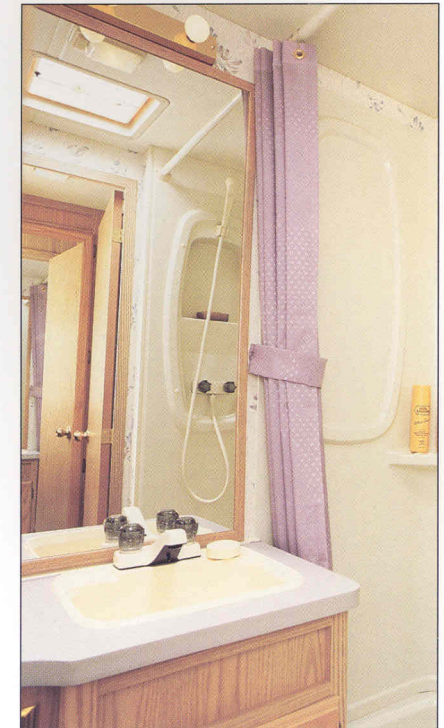
For Winnebago's 35th Anniversary celebration, we've created a limited edition color theme, Secret Garden. This optional interior color theme is fully coordinated throughout the motor home and beautifully accents the wood tones.

The deep wardrobe of the Adventurer may surprise those who have owned other motor homes. There's plenty of room for full-length hanging and the floor is carpeted so it's easy to clean. In addition, it has its own light and mirrored doors.



This view of the bathroom gives you an idea of how our storage works. We use every available area while maintaining an elegant sense of space and beauty. Our Home Comfort Design strategy directs everything we create so that all rooms meet their functional purpose while incorporating comfort, style and convenience.

The shower and tub's single-piece design eliminates leaks. Built into the mold is space for shampoo bottles and soap so your bathroom always looks tidy.





Strap yourself in with the 3-point seat belt and discover why so many RVers enjoy how this vehicle handles. As you would expect, Adventurer comes with power-assisted steering, cruise control, tilt wheel, air conditioning, and a stereo with its own power switch. On the Pusher model shown here, the center console cabinet is located between the cab seats.



This kitchen is designed for people who like to cook in style. The recessed sink comes with a cover and the combination of the microwave, range hood, range and oven is standard on every model. What you can't see here is that these flush mounted appliances (including the large refrigerator) are held in with steel tie-downs, so they won't budge even when you're traveling over rough terrain.

From the padded vinyl headliner to the plush stain-free carpeting, we have given careful thought to how people use their motor homes. That's why you'll find some of the deepest overhead cabinets, assist handles and straps at the doorway, a sensible floor-vented furnace and the most relaxing atmosphere.





3400 PUSHER

Interior Color Themes

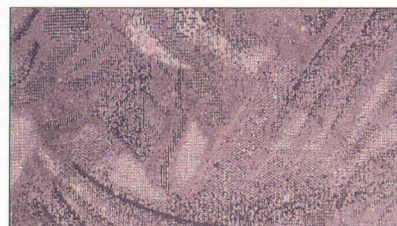


Accent



Carpet

Sandalwood



Accent

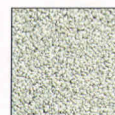


Carpet

City Lights



Accent



Carpet

Secret Garden (35th Anniversary)

Even on our newest floorplan, the 29RQ, there's exceptional space for living. This model utilizes a cross-aisle kitchen and angled bathroom design.

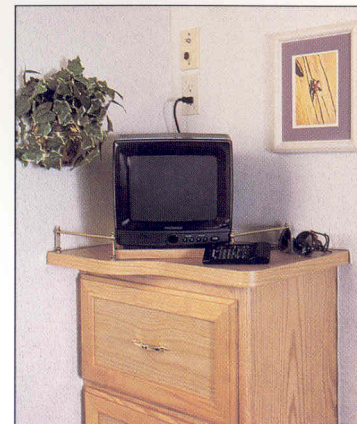


Reading lights, mirrored storage and nightstands – all part of what makes this bedroom so charming and easy to relax in.



Lift up the bed and you'll find an unbelievable amount of storage for extra blankets or sweaters. Gas springs come on every model. Underbed storage is not available on the 34RQ Pusher.

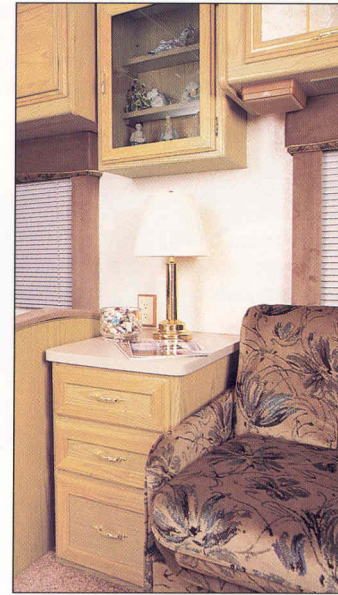
All bedrooms have connections for the TV and include either a TV shelf or stand. The switching system on the front TV/VCR option allows you to watch videos in the bedroom.



29RQ



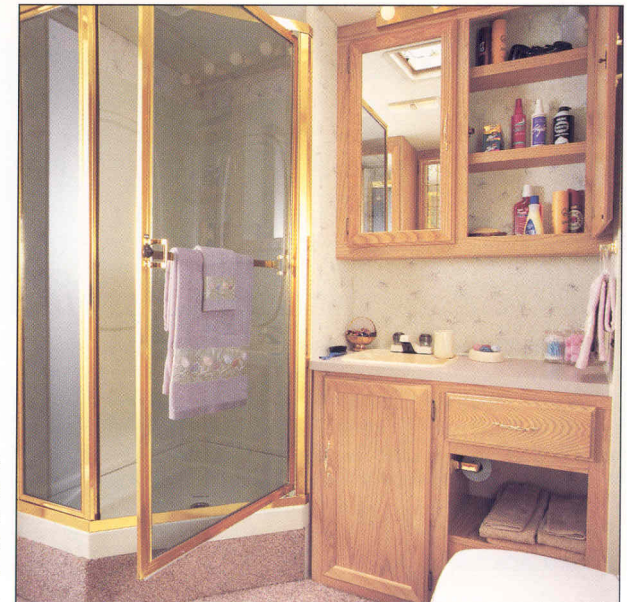
The large angled galley on the 37RW model sits directly across from the dinette making it easy to cook and serve. As you can see, there is an abundance of space to work and for storage.



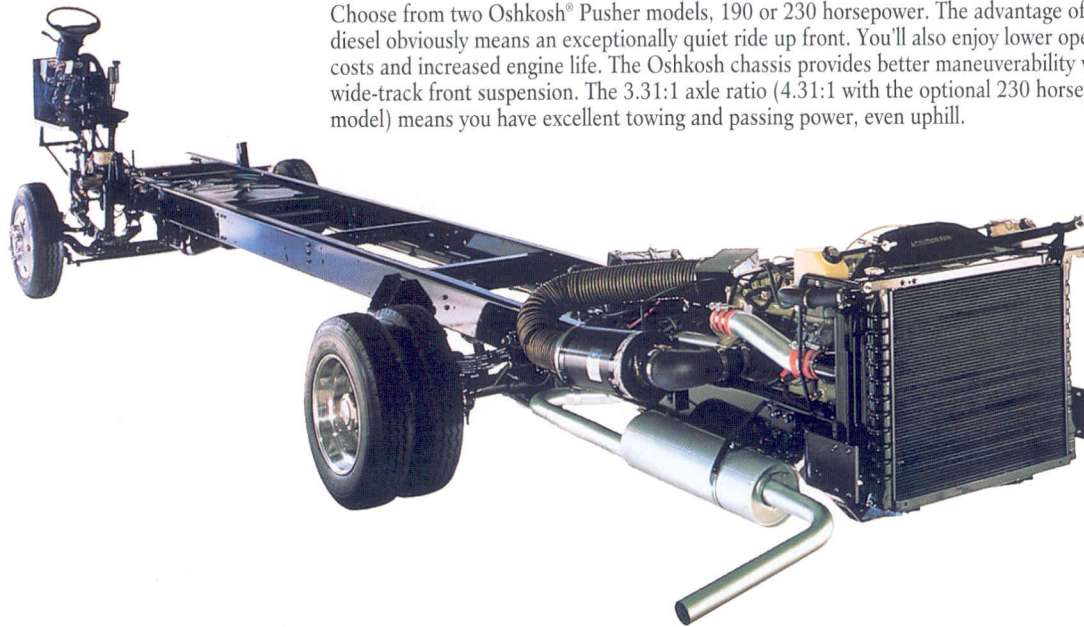
Another unique feature of the 37RW is this cabinet that includes its own file drawer. It's ideal for anyone who needs to take business on the road.



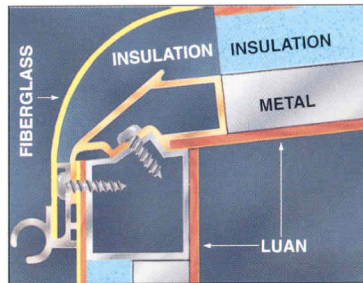
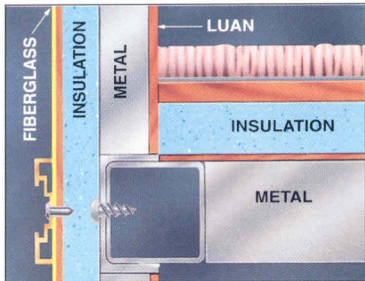
The two wardrobes on the 37RW stand on either side of a linen closet and table. If you need space to set your accessories while dressing, this is the perfect configuration.



The floorplans on the back cover will give you a good idea of how well the bathroom is arranged. The amount of space you have in this bathroom and dressing area is second to none.



Choose from two Oshkosh® Pusher models, 190 or 230 horsepower. The advantage of diesel obviously means an exceptionally quiet ride up front. You'll also enjoy lower operating costs and increased engine life. The Oshkosh chassis provides better maneuverability with wide-track front suspension. The 3.31:1 axle ratio (4.31:1 with the optional 230 horsepower model) means you have excellent towing and passing power, even uphill.



Winnebago's exclusive jointing system strengthens the roof, sidewalls and floor where they meet. The roof design provides outstanding moisture runoff and the floor joint locks into place so the weight of the wall is on the steel floor substructure. Steel is found throughout the cab, dash, floor and foundation, providing a solid mounting surface for the windshield and 3-point seat belts. The sidewall structure, roof structure and underbelly are of aluminum for light, yet tough support.



Home. It's What We Do Best.

For 35 years, we have led the quest to create the best home on the road. As a result, Winnebago Industries has the largest and most advanced motor home manufacturing complex in the world. Computer-aided design and manufacturing controls our building process, from pre-testing to the finishing touches. We also run extensive tests on joint stress, climate performance and road conditions.



We invite you to visit us and see what sets a Winnebago Industries motor home apart from the rest. Tours begin at our visitor center where you'll learn about our history, advances in technology and the motor homes we build. Call us at (515) 582-3535 to set up your tour.



Protect The Best Years Of Your Life.

Unbelievably, Winnebago Industries is one of the only RV manufacturers to use automotive, 3-point seat belts on most models. Our motor homes also have detectors for carbon monoxide, LP leaks and smoke. It's all part of our extra effort to create a safe environment.



No Surprise That Our First Innovation Had To Do With Comfort.

Thirty-five years ago, our first task was to create a comfortable seat cushion. Today we continue with a new strategy to insure our motor homes are the most livable: Home Comfort Design. It pushes us to make the best use of space for living, storage and style. You'll feel the difference.



Get Your Promises In Steel.

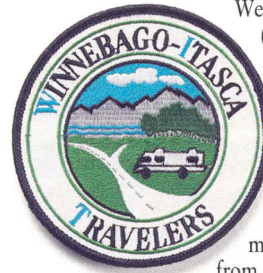
Each motor home we make has a steel cab substructure that protects you and assures the integrity of the vehicle for years. Steel may seem like common sense, but the fact is, many others still use wood for their foundations and sometimes even their firewalls.

Beauty Is Built In.

We're proud to say we produce many more of our own components. Sure, we could buy them off the shelf. But by building our own furniture and cabinetry, we guarantee they fit exactly. It also allows us to provide things like Scotchgard™ Protector as standards. We're a company that believes this kind of perfection is important.



You're In Good Company.



We make it easy to be an enthusiast. With the Winnebago-Itasca Travelers (WIT) Club, you can meet Winnebago Industries owners in your area and access special services like professional trip routing and mail forwarding. The WIT Club Magazine will keep you up-to-date on rallies and caravans.

The fun continues when you join Winnebago Motorsports. Created to pay homage to the world of motorsports, you'll see us everywhere from car races to speedboat events. We provide hospitality at events, a full compliment of racing merchandise and chances to meet the racing celebrities.



The Great Wall Of Winnebago.

Every Winnebago Industries motor home has our innovative Thermo-Panel® wall structure insulating and strengthening the shell without adding a lot of weight. When the cold snap comes through, you'll be glad we thought of it.

You Are Not Alone.

If you need help on the road, Winnebago Industries' free round-the-clock Road Assistance Service is a phone call away. It's part of our Preferred Care program taking care of you down the road.

We also have one of the most comprehensive warranty packages in the industry. The standard warranty protects your motor home for 12 months or 15,000 miles. At expiration of the basic warranty, the coverage continues for 36 months/36,000 miles on structural components. A

10 year limited warranty protects the roof and walls, and the 100% stain-free carpeting carries an extensive stain and wear warranty. We can provide this kind of coverage because our vehicles last. In fact, they have the highest overall resale value of competitive motor homes on the road.



1994 ADVENTURER

29RQ	32RQ	34RQ	34RA	37RW	34RQ PUSHER	
29'10"	32'	34'	34'	37'4"	34'	Length
11'5"	11'7"	11'8.5"	11'9.5"	11'8.5"	NA	Exterior Height w/Roof Air - Chevrolet
TBD	11'6"	11'8"	11'6"	11'10"	NA	Exterior Height w/Roof Air - Ford
NA	NA	NA	NA	NA	11'7"	Exterior Height w/Roof Air - Pusher
8'	8'	8'	8'	8'	8'	Exterior Width
6'8"	6'8"	6'8"	6'8"	6'8"	6'8"	Interior Height
7'7"	7'7"	7'7"	7'7"	7'7"	7'7"	Interior Width
TBD	88.8 cu. ft.	106 cu. ft.	110 cu. ft.	102 cu. ft.	106 cu. ft.	Exterior Storage
78 gal.	78 gal.	78 gal.	78 gal.	78 gal.	NA	Fuel Capacity - Chevrolet
75 gal.	75 gal.	75 gal.	75 gal.	75 gal.	NA	Fuel Capacity - Ford
NA	NA	NA	NA	NA	90 gal.	Fuel Capacity - Pusher
106 gal.	106 gal.	106 gal.	106 gal.	106 gal.	92 gal.	Fresh Water Capacity w/Heater
111 gal.	99 gal.	105 gal.	99 gal.	105 gal.	105 gal.	Holding Tank Capacity
60 lbs.	80 lbs.	100 lbs.	100 lbs.	100 lbs.	130 lbs.	LP Capacity
14,800 lbs.	16,000 lbs.	16,000 lbs.	16,000 lbs.	18,000 lbs.	NA	GVWR - Chevrolet
15,200 lbs.	17,000 lbs.	17,000 lbs.	17,000 lbs.	19,000 lbs.	NA	GVWR - Ford
NA	NA	NA	NA	NA	18,340 lbs.	GVWR - Pusher
NA	NA	NA	NA	NA	19,840 lbs.	GVWR - Pusher (Optional)
178"	208"	228"	228"	228" + Tag	228"	Wheelbase

AUTOMOTIVE

29RQ	32RQ	34RQ	34RA	37RW	34RQ PUSHER	
■	■	■	■	■	■	Chassis - Chevrolet 7.4L 454 V-8 Fuel-Injected Gasoline Engine, Automatic Transmission w/Overdrive & Cooler, Front Suspension: Independent, Coil Spring w/Aux. Air Springs, Rear Suspension: Leaf Spring, 630-CCA Battery/105-Amp. Alternator
□						Chassis - Chevrolet 6.5L Turbo Diesel Engine, Automatic Transmission w/Overdrive & Cooler, Front Suspension: Gas, Rear Suspension: Leaf Spring, 630-CCA Battery/105-Amp. Alternator, Available Spring 1994
□	□	□	□	□	□	Chassis - Ford 7.5L 460 V-8 Fuel-Injected Gasoline Engine, Automatic Transmission w/Overdrive & Cooler, Front Suspension: Mono-Beam Axle w/Leaf Spring, Rear Suspension: Multi-Leaf Spring, 650-CCA Battery/130-Amp. Alternator
				■		Chassis - Oshkosh 5.9L 190 H.P. Turbo-Charged/After-Cooled Cummins Diesel Engine, Automatic Transmission w/Overdrive & Cooler, I-Beam w/Leaf Spring Front Suspension, Leaf Spring Rear Suspension, 923-CCA Battery/100-Amp. Alternator
				□		Chassis - Oshkosh 5.9L 230 H.P. Turbo-Charged/After-Cooled Cummins Diesel Engine, Automatic Transmission w/Overdrive & Cooler, I-Beam w/Leaf Spring Front Suspension, Leaf Spring Rear Suspension, 923-CCA Battery/100-Amp. Alternator
□	□	□	□	□	□	Shocks (Gas) Front, Chevrolet
■	■	■	■	■	■	Suspension (Air) Tag Axle
						Tires (Radial) w/Spare

DRIVER CONVENIENCES

29RQ	32RQ	34RQ	34RA	37RW	34RQ PUSHER	
■	■	■	■	■	■	12-V Electrical Supply/Lighter
■	■	■	■	■	■	Battery Charge Control Dual, Automatic
■	■	■	■	■	■	Battery Disconnect Auxiliary
					■	Cabinet Center Console
■	■	■	■	■	■	Convenience Tray
■	■	■	■	■	■	Cruise Control
■	■	■	■	■	■	Curtain w/Track Front Wrap-Around
□	□	□	□	□	□	Defroster Auxiliary 2-Speed
□	□	□	□	□	□	Driver's Door
■	■	■	■	■	■	Heating/Air Conditioning Automotive Blend Air System

Standard ■ Optional □ *Not all options available in combinations. See dealer for details. Winnebago Industries' continuing program of product improvement makes specifications, model availability and prices subject to change without notice.

29RQ 32RQ 34RQ 34RA 37RW 34RQ PUSHER

■	■	■	■	■	■	Hood Release Exterior Key Locks
■	■	■	■	■	■	Map Light
■	■	■	■	■	■	Mirrors (Rear View) Low Mounted
□	□	□	□	□	□	Mirrors (Rear View) Low Mounted, Include Convex Element
□	□	□	□	□	□	Rear View Monitor System Video/Audio
■	■	■	■	■	■	Seats w/3-Point Retracting Seat Belts Reclining High-Back Design, Hinged Armrests, Lumbar Support, Swivel/Slide Pedestal
■	■	■	■	■	■	Service Light Driver's Side
■	■	■	■	■	■	Start Circuit Auxiliary
■	■	■	■	■	■	Steering Power Assisted w/Tilt Wheel
■	■	■	■	■	■	Storage Cabinet (Front Overhead)
■	■	■	■	■	■	Sunvisors
□	□	□	□	□	□	Upgrade - Driver's Convenience Package Carpeted Floor Mats, Wall-Mount Map Pockets
■	■	■	■	■	■	Windows (Driver/Passenger) Sliding, w/Screens
■	■	■	■	■	■	Windshield Wipers (Intermittent)

ENTERTAINMENT

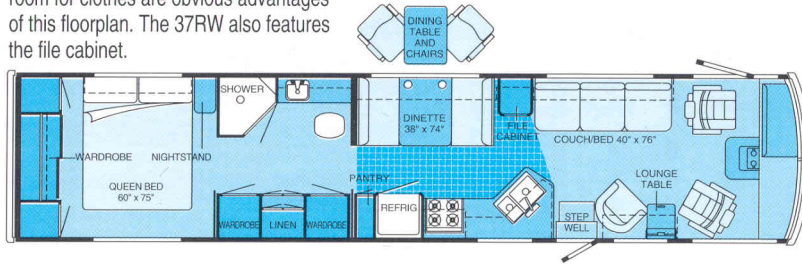
29RQ	32RQ	34RQ	34RA	37RW	34RQ PUSHER	
■	■	■	■	■	■	Antenna (Radio) Roof-Mounted, Flexible Rubber
□	□	□	□	□	□	C.B. Prep Kit Antenna, Coax Wiring, 12-V Power Connection
□	□	□	□	□	□	Entertainment Center (Patio) AM/FM Radio, Cassette Deck, Speakers (2), DC Receptacle, 110-V Outlet, TV Jack, Radio Antenna, TV Table, Locking Door
□	□	□	□	□	□	Inverter 110-V for TV/VCR
■	■	■	■	■	■	Stereo Power Switch For Main or Auxiliary Battery Use
■	■	■	■	■	■	Stereo w/Digital Clock (Cab) Electronic Tune AM/FM Cassette Deck w/Seek, Speakers (4)
□	□	□	□	□	□	TV (13" Color) & VCR w/Remote Switching System, Cabinet Exchange
□	□	□	□	□	□	TV (13" Color) w/Remote
□	□	□	□	□	□	TV (9" Color) w/Remote Located in Bedroom
■	■	■	■	■	■	TV Enhancement Package Antenna (Amplified), DC Receptacles (2), Interior Jacks (2), Coax Wiring, Cable Input, Exterior Antenna Jack, TV Shelf or Stand

INTERIOR

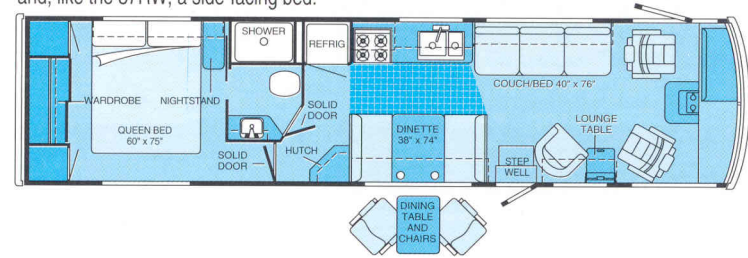
29RQ	32RQ	34RQ	34RA	37RW	34RQ PUSHER	
■	■	■	■	■	■	Cabinets Wood Doors
■	■	■	■	■	■	Carpeting w/Pad Stain Resistant w/Scotchgard™ Protector
■	■	■	■	■	■	Ceiling Padded Vinyl Headliner
■	■	■	■	■	■	Ceiling Lights
■	■	■	■	■	■	Ceiling Vent Powered, Bathroom
□	□	□	□	□	□	Ceiling Vent Powered Ventilator Fan, Galley
■	■	■	■	■	■	Ceiling Vents Non-Powered, Lounge, Galley & Bedroom
■	■	■	■	■	■	Clock Decorator Style
□	□	□	□	□	□	Color Themes (Interior) Choice of Sandalwood (Brown), City Lights (Eggplant)
■	■	■	■	■	■	Color Theme (Exterior) Secret Garden (35th Anniversary)
						Divider Folding Door
						Divider Hinged Door
		■		■	■	Divider Sliding Doors (2) 1 Door on 32RQ
						Lamp(s) Decorator Style, in Lounge
						Light (Aisle Courtesy) by Entrance Door
						Mini-Blinds Galley & Bath
						Storage below All Couches
						Washer/Dryer Combination
■	■	■	■	■	■	Windows Tinted w/62% Light Transmittal
□	□	□	□	□	□	Windows Dual Glazed, Thermo-Insulated, Available Fall 1993

1994 Adventurer Floorplans

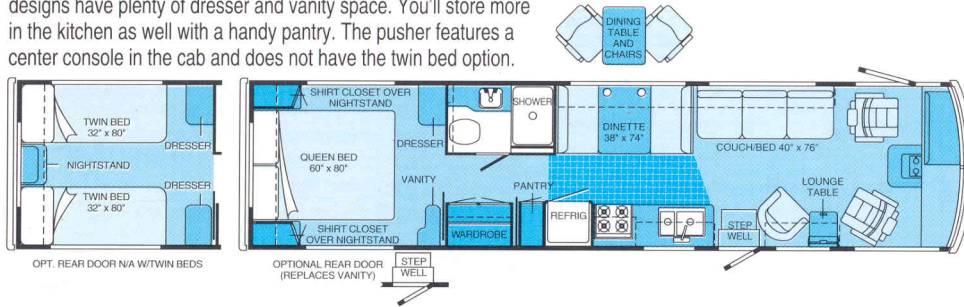
37RW The spacious kitchen, bathroom and abundant room for clothes are obvious advantages of this floorplan. The 37RW also features the file cabinet.



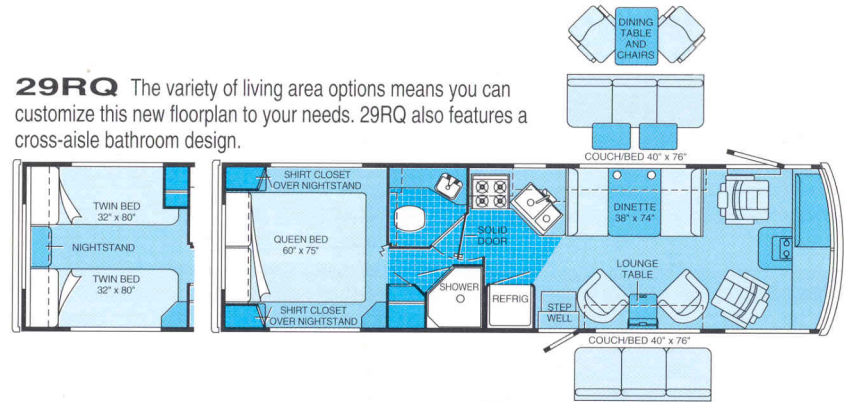
34RA Enter the bathroom from either direction on the side-aisle 34RA. This floorplan comes with an exclusive hutch and, like the 37RW, a side-facing bed.



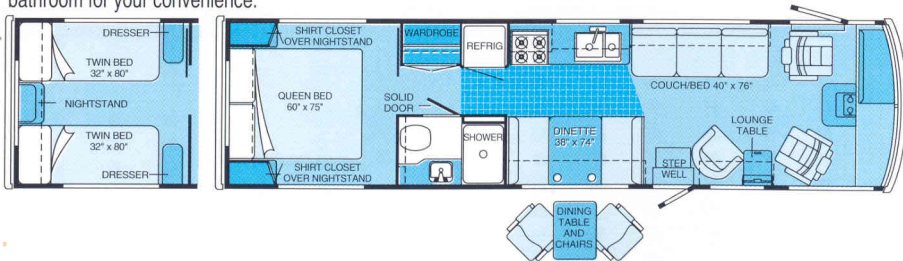
34RQ /34RQ PUSHER The bedroom designs have plenty of dresser and vanity space. You'll store more in the kitchen as well with a handy pantry. The pusher features a center console in the cab and does not have the twin bed option.



29RQ The variety of living area options means you can customize this new floorplan to your needs. 29RQ also features a cross-aisle bathroom design.



32RQ Abundant living and dining space is a highlight of the 32RQ floorplan. We've placed the wardrobe directly across from the bathroom for your convenience.



Dimensions shown are for sleeping space only and dashed lines denote overhead storage area. Patterned area indicates optional vinyl floor covering.

For Winnebago sales and service, contact:

WINNEBAGO
It's all in our name.