

# Exteriors

# Décor

Choose from deluxe graphics or customize your look with one of four full-body paint options.



**Bright Platinum**  
DELUXE GRAPHICS



**Pewter Pearl**  
DELUXE GRAPHICS



**Autumnwood**  
FULL-BODY PAINT



**Pearl**  
FULL-BODY PAINT



**Silver Leaf**  
FULL-BODY PAINT



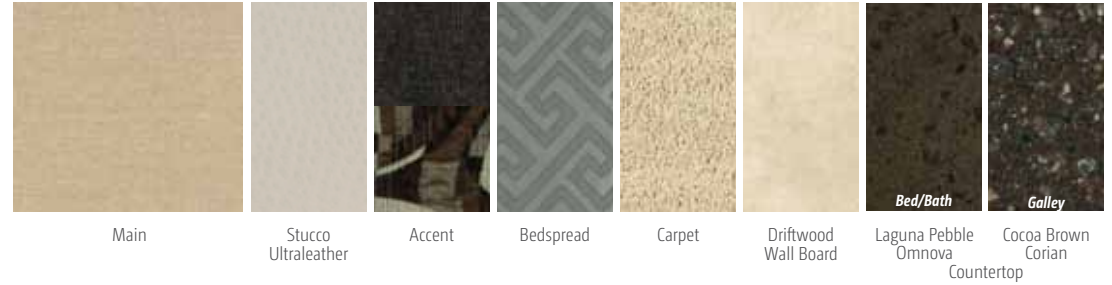
**Toreador**  
FULL-BODY PAINT

Choose from three fabric collections and three cabinet woods with satin nickel hardware and hidden hinges.

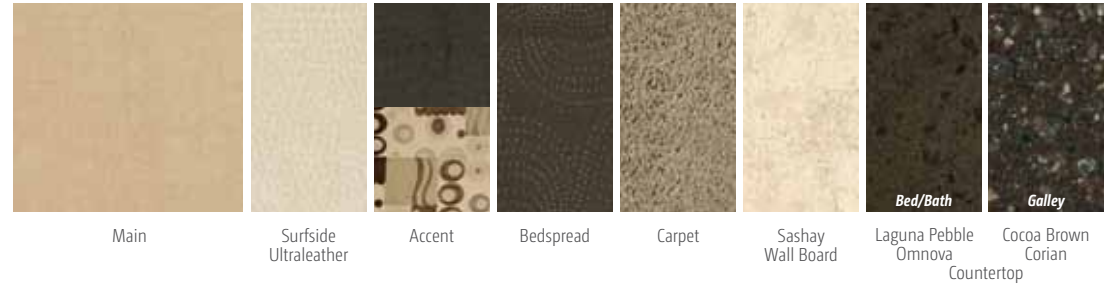
**Sunset Ridge** *Understated earthy warmth with soft geometric patterns to add interest*



**Imperial** *Regal color palette juxtaposes cool and warm to create a sophisticated ambiance*



**Westwood** *Velvety elegance in dark and light fabrics offset with playful abstract accents*



Honey Cherry      Forest Cherry      Coffee-Glazed Vienna Maple

*Fabrics and carpets may change without notice or obligation.*



## Don't Miss Out

Caravans, rallies, local and state events, and exclusive RV travel benefits can all be yours as a WIT Club member—and you can meet like-minded folks that possess the same enthusiasm for traveling this great nation of ours. It's a wonderful way to make your Sightseer a way of life. Learn more about the Winnebago-Itasca Travelers Club at WITclub.com.



### Members enjoy:

- Caravans and Rallies
- Local and State Group Activities
- RV Travel Benefits



## Committed to Service

We back our motor homes with best-in-class support both before *and* after the sale:

- 12-month/15,000-mile basic limited warranty
- 36-month/36,000-mile warranty on structure
- 10-year standard limited parts-and-labor roof skin warranty
- Complimentary 24-hour roadside assistance program
  - RV Technical Assistance Hotline
  - RV Service Appointment Assistance
  - Emergency Trip Interruption
  - Emergency Message Service
  - Nationwide Trip Routing
  - Fee-Free Travelers Cheques



- TripSaver Fast Track Parts guarantees that in-stock warranty parts ship directly to your dealer within 24 hours
- National dealer service network



**WINNEBAGO**  
GoWinnebago.com

For photos, videos and a whole lot more about the full lineup of Winnebago motor homes, visit [GoWinnebago.com](http://GoWinnebago.com).



THE MOST RECOGNIZED  
NAME IN MOTOR HOMES®

NYSE: WGO

[GoWinnebago.com](http://GoWinnebago.com)



For Sales and Service Information Contact:



2012 Sightseer





On the cover: 33C Pewter Pearl Deluxe Graphics





30A Westwood with Forest Cherry



33C Imperial with Coffee-Glazed Vienna Maple

## Don't Miss a Thing

Exploring the sights and sounds of America will be a joy in your 2012 Winnebago Sightseer,<sup>®</sup> where Class A luxury and value come together with the premium amenities you deserve at a price you'll love. This year sees the introduction of a new floorplan—the 30A—with the innovative extendable U-shaped dinette, a hybrid couch/dinette that offers convenience, comfort, and style—with seating for six. Add to that the 42" LCD TV that slides out (30A) for optimal viewing even when the slideout is not extended, and you see how Winnebago Industries<sup>®</sup> is determined to create motor homes that will not only meet your needs, but feed your dreams.

Features you've come to expect in a Winnebago motor home include cab seats that swivel to face the lounge—clothed in durable, Ultraleather,<sup>™</sup> your choice of the Comfort Sofa Sleeper (33C/35J) or Extendable Sectional Sofa (36V); and floorplans with either the BenchMark<sup>®</sup> full comfort dinette (NA 30A) or extendable dining table and chairs with buffet (33C).

With technology like our PowerLine<sup>®</sup> energy management system, 3-position controls, OnePlace<sup>®</sup> systems center, and much more, there's a lot to see in the 2012 Winnebago Sightseer.



**Recognized Quality** The RV Dealers Association bestows its annual Quality Circle Award based on dealer ratings to the manufacturers that provide exceptional products, service and support. Only one manufacturer has received this honor for fifteen consecutive years: Winnebago Industries.<sup>®</sup>

### Why Sightseer?

- Four innovative floorplans
- Corian<sup>®</sup> galley countertops
- MCD American Solo<sup>®</sup> blackout roller shades
- Swivel Ultraleather<sup>™</sup> cab seats
- Spacious bedrooms
  - Queen bed standard 30A, 33C and 36V
  - King bed and bunk beds standard on 35J
  - King bed available on 33C and 36V
- Available Ultraleather on select furniture



## Take It All In

There's so much to appreciate in this year's Sightseer. Gourmets will be pleased to find a three-burner range top, microwave oven with vented range hood, pullout pantry and ample refrigerator. Traditional cabinetry in three striking finishes offers attractive storage, and Corian countertops make food prep fun. You'll have plenty of prep space, too, with the flip-up countertop extension (33C & 35J) and sink/range covers. Need more? Choose the three-burner range with oven, the microwave/convection oven, and the four-door refrigerator with icemaker available on 33C and 36V.

Dining is pure pleasure, whether you opt for the 33C, 35J, or 36V with BenchMark dinette or the 33C with available extendable dining table and chairs with buffet, or the 30A and its innovative extendable U-shaped sectional dinette. Comfort, space, and additional storage are yours to enjoy, further showing how Winnebago Industries works to make the most of your space.

The mid-coach 42" LCD TV (NA 33C) means you will enjoy the best possible viewing. Add another 32" LCD TV (35J/36V) to the lounge if that strikes your fancy. Ready for bed? Each model's private bedroom includes a slideout, queen- or king-size bed, available LCD TV, and plentiful wardrobe cabinetry.



**Invite Them All** 2012 introduces our extendable sectional U-shaped dinette, a gorgeous and flexible dinette that extends to provide a larger dining space and additional seating when the situation arises. It also converts into a large sleeping space.



**Kick Back** Wind down after a day of adventure in the new Ultraleather Euro Chair with a built-in footrest.



# Best in Class

See how Winnebago Industries takes motor home design and function to the next level, and why we've earned the right to be called the Most Recognized Name in Motor Homes.®



**Keep in Touch** The *Dash Workstation* is a great place to catch up on emails or write a letter.



**Versatility** All sofa beds are not created equal. The *Comfort Sofa Sleeper* is wrapped in durable Ultraleather and easily converts to a spacious bed with a self-inflating mattress so cozy, your guests won't want to leave (33C, 35J).



**SmartSpace** Our SmartSpace™ philosophy shines in the well-appointed galley. Drawers are sized to maximize storage and open wide on full-extension slides for easy access.



**Perfect Viewing** The large LCD TV slides out to be seen even with the slideout retracted (30A).



**Get Ready** The *Mirrored Wardrobe and Bedroom Vanity* make it easy to pick your outfit and get ready for the day's adventures or a night out.



**Power Down** Say goodbye to heat and sunlight thanks to the available front windshield *Powered Sunvisor* that includes a solar screen and blackout shade—powered by the push of a button.



**Let There Be Light** With our available smoothly retracting *MCD American Duo® Solar/Blackout Roller Shades* you can control just how much light and privacy you want—no matter the time of day. MCD Solo® shades are standard.



**Technology** Other motor homes have tank monitors with probes that can corrode. The *TrueLevel™ Tank Monitoring System* harnesses sonar technology to provide accurate readings every time.



**Outdoor Fun** Liven up the campsite by choosing the *Exterior Entertainment Center* with LCD TV, CD/DVD, AM/FM and two speakers in a lockable compartment.

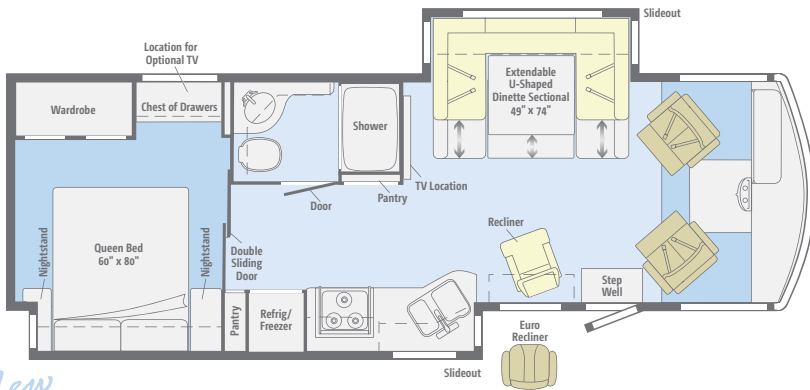
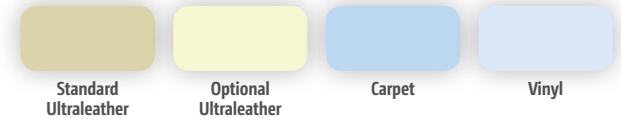
**WINNEBAGO**  
GoWinnebago.com

GoWinnebago.com is your resource for web-exclusive content and all the details you can't fit in a brochure!



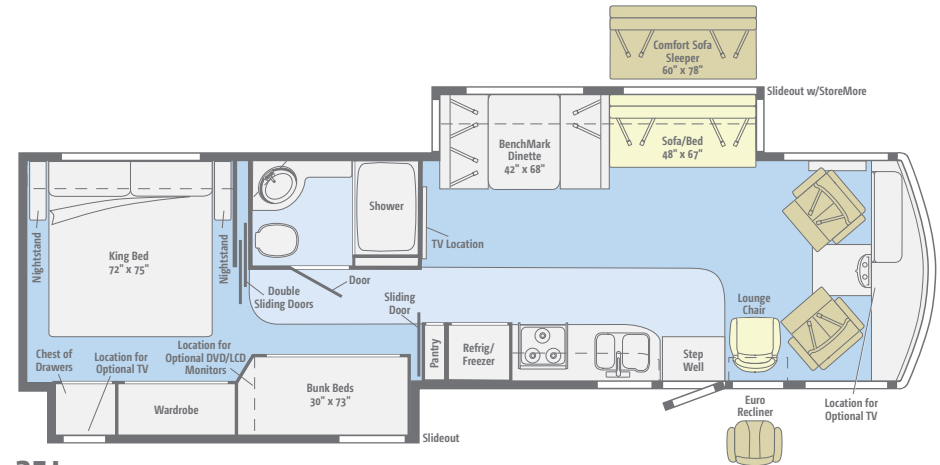
# Floorplans

Dimensions shown are for sleeping space only and may vary due to styling differences. Dashed lines denote overhead storage areas. Floorplans and specifications are also available online at [GoWinnebago.com](http://GoWinnebago.com).

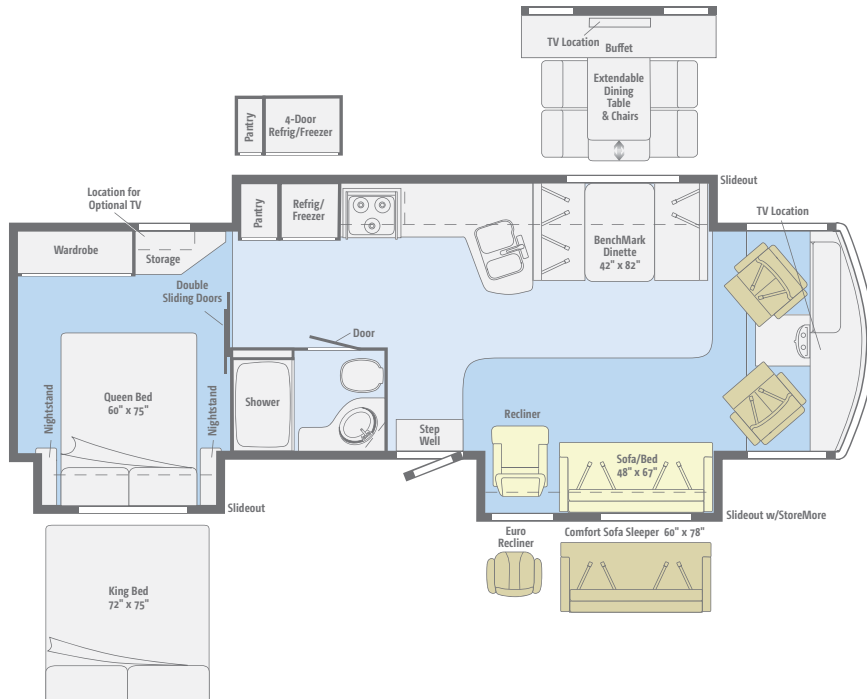


*New*

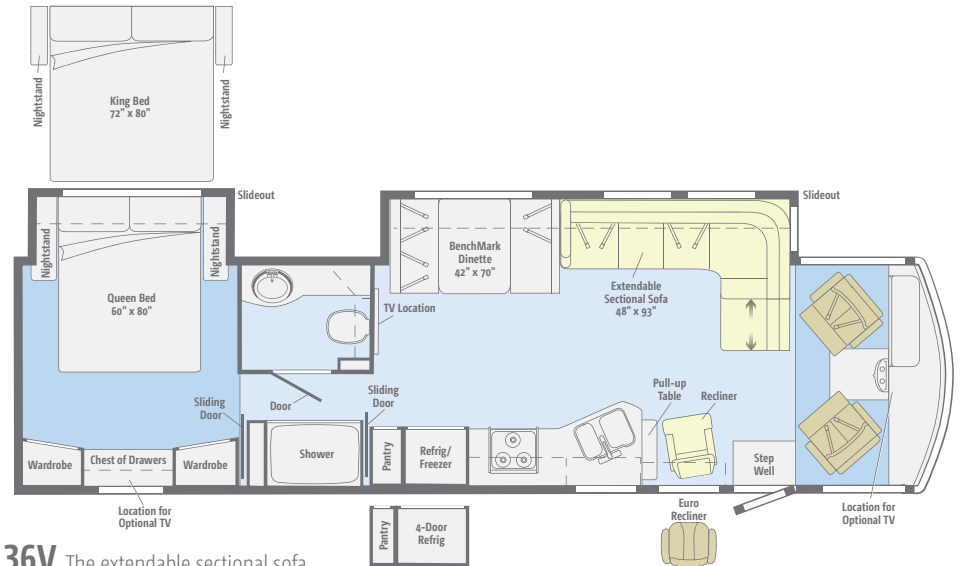
**30A** A generous bedroom and bathroom couple with the exciting new extendable sectional U-shaped dinette and available Euro recliner with built-in footrest.



**35J** A king bed, bunk beds and sliding doors create two bedrooms in this smartly arranged floorplan.



**33C** Three slideouts give you lots of room to move with a king bed, Comfort Sofa Sleeper, and buffet options with retractable 42" LCD TV.



**36V** The extendable sectional sofa with room for up to six and available king bed with plentiful wardrobe highlight this expansive floorplan.



See your favorite motor homes come alive with virtual tours at [GoWinnebago.com](http://GoWinnebago.com).





# Specifications

## CHASSIS

**Ford® F53 Chassis** 362-hp 6.8L Super Duty V10 SEFI Triton® engine, TorqShift™ 5-speed automatic transmission w/tow haul, Hydro-Max™ power brakes, 4-wheel ABS, 175-amp. alternator

**7-pin trailer wiring**

**Trailer Hitch**® 5,000-lb. drawbar/500-lb. maximum vertical tongue weight

**Automatic hydraulic leveling jacks w/3-position controls**

**Stylized aluminum wheels w/22.5" tires**

## CAB CONVENIENCES

**Cab Seats** armrests, lumbar support and multi-adjustable slide/recline/swivel

**Stereo System** AM/FM, CD/DVD player, alarm clock, front input jack and remote

**Chassis/house battery radio power switch**

**Power assist steering w/tilt wheel**

**12-volt powerpoint**

**Cruise control**

**Power mirrors w/defrost**

**Map lights**

**Sunvisors**

**C.B. wire prep**

**Cab wraparound curtain**

**Dash workstation**

**Rearview color monitor system w/one-way audio**

## OPTIONAL EQUIPMENT

**Sideview color camera monitor system**

**Defroster fans**

**MCD American Duo® powered front shade w/solar and blackout shades, privacy curtains for driver and passenger windows**

**6-way power driver seat**

## INTERIOR

**32" LCD TV** (33C)

**42" LCD TV** (35J, 36V)

**42" LCD TV mounted to a locking extendable slide system** (30A)

**Amplified digital HDTV antenna system**

**Satellite system ready**

**Soft vinyl ceiling**

**MCD American Solo® blackout roller shades** (lounge, dinette and bedroom)

**Mini blinds** (galley) (30A, 35J, 36V)

**OnePlace® systems center**

**Tinted windows**

**Powered ventilator fan** (lounge)

**Powered roof vent** (bath)

**Key-activated slideroom master lock switch**

## OPTIONAL EQUIPMENT

**32" LCD TV** (35J, 36V)

**42" LCD TV w/dining table/buffet** (33C)

**MCD American Duo® solar/blackout roller shades** (lounge, dinette and bedroom)

**Tinted, dual-glazed, thermo-insulated windows**

**Vinyl floor covering** (front to bedroom; cab area, slideouts and bedroom carpeted) (33C, 35J)

**Satellite dish antenna w/remote extender**

## GALLEY

**Corian® solid-surface countertops**

**Backsplash**

**Flip-up countertop extension** (33C, 35J)

**Range and sink covers**

**2-door refrigerator/freezer**

**Microwave oven w/vented range hood**

**3-burner range top w/storage below**

## OPTIONAL EQUIPMENT

**Microwave/convection oven w/vented range hood**

**Large capacity 2-door refrigerator/freezer w/icemaker and water filter** (30A, 35J)

**4-door refrigerator/freezer w/icemaker** (33C, 36V)

**3-burner range w/oven**

## BATH

**Thermo-formed laminated countertop**

**Flexible showerhead**

**Sliding textured glass shower door**

**Skylight**

## BEDROOM

**Innerspring mattress**

**Bedsread, pillows and shams**

**Bunk beds w/foam mattresses, mattress covers, pillows w/shams and privacy curtains** (35J)

## OPTIONAL EQUIPMENT

**2 DVD players w/headphones, 8.5" LCD monitors and headphones** (bunk area) (35J)

**19" LCD TV, DVD cable ready** (35J)

**26" LED TV, DVD cable ready** (30A, 33C, 36V)

## EXTERIOR

**Main Entrance w/screen door**

**Automatic entrance door steps**

**Porch light**

**Lighted storage compartments**

**Premium smooth high-gloss skin**

**KeyOne™ lock system**

**Front mud flaps**

**Ladder**

**Powered patio awning**

## OPTIONAL EQUIPMENT

**Additional powered patio awning** above entrance door (30A)

**Entertainment Center** 32" LCD TV, AM/FM stereo, DVD player, remote (NA 35J w/range/oven option)

**Lower front protective mask** (w/full-body paint)

## HEATING & COOLING SYSTEM

**Two high-efficiency roof air conditioners w/energy management system**

**35,000 BTU low-profile ducted furnace** (30A, 33C)

**40,000 BTU low-profile ducted furnace** (35J, 36V)

## OPTIONAL EQUIPMENT

**Two high-efficiency air conditioners w/heat pumps**

## ELECTRICAL SYSTEM

**AC/DC electrical distribution system 55-amp. converter/charger**

**50-amp. power cord**

**5,500-watt Cummins Onan® Marquis Gold™ gas generator**

**Generator/shoreline automatic changeover switch**

**Two deep-cycle, Group 31 batteries**

**Chassis and coach battery disconnect systems**

**PowerLine® energy management system**

**Automatic dual-battery charge control**

**Auxiliary start circuit**

**Exterior antenna jack and AC duplex receptacle**

## OPTIONAL EQUIPMENT

**1,000-watt inverter**

## PLUMBING SYSTEM

**Service Center** color-coded labels, cable TV input, pressurized city water hook-up w/diverter valve, 3" drainage valve, portable satellite dish hook-up, power cord, 10' sewer hose, QuickPort® exterior wash station w/lighted pump switch

**Permanent-mount LP tank**

**On-demand water pump**

**TrueLevel™ holding-tank monitoring system**

**Winterization Package** water heater bypass valve and siphon tube

**Heated holding-tank compartment**

**6-gallon 110 V/LP water heater w/motoraid and auto heater**

## SAFETY

**Seat belts**

**Child seat tether anchor in forward-facing dinette seat** (30A, 35J, 36V)

**LP, smoke and carbon monoxide detectors**

**10 BC fire extinguisher**

**Ground fault interrupter**

**High-mount brake lamp**

## WARRANTY<sup>7</sup>

**12-month/15,000-mile basic warranty<sup>8</sup>**

**36-month/36,000-mile limited warranty on structure<sup>8</sup>**

**10-year limited parts and labor warranty on roof skin<sup>8</sup>**

- 1 The height of each model is measured to the top of the tallest standard feature and is based on the curb weight of a typically equipped unit. The actual height of your vehicle may vary by several inches depending on chassis or equipment variations. Please contact your dealer for further information.
- 2 Sightseer floorplans feature a wide-body design—over 96" in making your purchase decision, you should be aware that some states restrict access on some or all state roads to 96" in body width. Before making your purchase decision, you should confirm the road usage laws in the states of interest to you.
- 3 The load capacity of your motor home is designated by weight, not by volume, so you cannot necessarily use all available space when loading your motor home.
- 4 Capacities are based on measurements prior to tank installation. Slight capacity variations can result due to installation applications.
- 5 Capacities shown are tank manufacturer's listed water capacity (W.C.) Actual filled LP capacity is 80% of listing due to overfilling prevention device on tank.
- 6 Actual towing capacity is dependent on your particular loading and towing circumstances which includes the GVWR, GAWR, and GCWR, as well as adequate trailer brakes. Please refer to the Operator's Manual of your vehicle for further towing information.
- 7 See separate chassis warranty.
- 8 See your dealer for complete warranty information.

NA Not Available

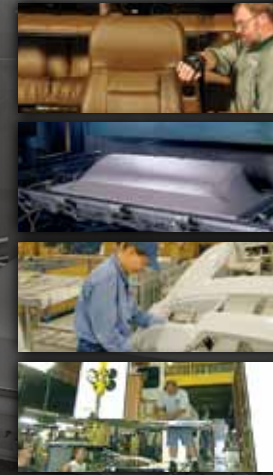
Not all items available in combination. See dealer for details.

Winnebago Industries'® continuing program of product improvement makes specifications, equipment, model availability, and prices subject to change without notice. Comparisons to other motor homes are based on the most recent information available at printing.

## Weights & Measures

	30A	33C	35J	36V
Length	31'1"	34'6"	35'10"	37'5"
Exterior Height <sup>1</sup>	12'6"	12'5"	12'6"	12'6"
Exterior Width <sup>2</sup>	8'5.5"	8'5.5"	8'5.5"	8'5.5"
Exterior Storage <sup>3</sup> (cu. ft.)	66.4	93.5	117.8	161.7
Awning Length	15'6"	19'	14'	20'
Interior Height	6'8"	6'8"	6'8"	6'8"
Interior Width	8'0.5"	8'0.5"	8'0.5"	8'0.5"
Freshwater Capacity w/Heater <sup>4</sup> (gal.)	86	83	75	94
Holding Tank Capacity - Black/Gray <sup>4</sup> (gal.)	39/50	39/59	44/48	39/44
LP Capacity <sup>5</sup> (gal.)	18	18	18	18
Fuel Capacity (gal.)	80	80	80	80
GCWR <sup>3,6</sup> (lbs.)	26,000	26,000	26,000	26,000
GVWR (lbs.)	22,000	22,000	22,000	22,000
GAWR - Front (lbs.)	8,000	8,000	8,000	8,000
GAWR - Rear (lbs.)	15,000	15,000	15,000	15,000
Wheelbase	190"	220"	228"	242"

## Take a Tour



We're proud of our processes, state-of-the-art facilities and the people who make Winnebago Industries number one. We invite you to visit our complex in Forest City, Iowa, for a first-hand look at the dedication and technology behind every motor home we build.

# NO SHORTCUTS — NO COMPROMISES

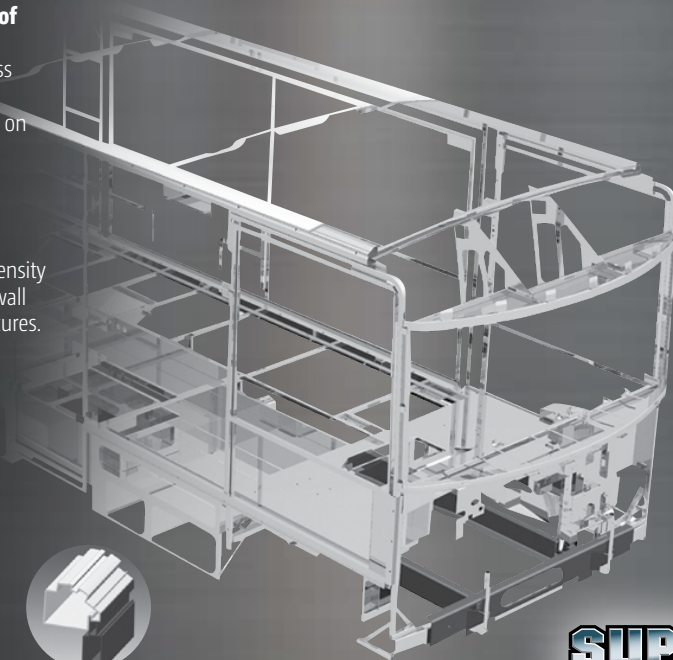
The crowned, one-piece **fiberglass roof** is backed by a 10-year limited parts-and-labor roof skin warranty. Fiberglass offers superior strength and durability over less attractive rubber roofs found on so many competitive models that can streak and degrade over time.

Durable, lightweight **Thermo-Panel® sidewalls** combine fiberglass, high-density block-foam insulation and the inner wall surface with aluminum support structures.

**Metal substructures** secure cabinets and appliances to add safety and stability.

An **electrodeposition coating** helps protect critical steel components.

Specially engineered **interlocking joints** connect the floor, sidewalls and roof into a cohesive unit.



**SUPER  
STRUCTURE**



You can compare features. You can compare styles. But when it comes to quality construction, there is no comparison. Only motor homes manufactured by Winnebago Industries harness the legendary strength and durability of our SuperStructure® construction process—a process we've been perfecting for more than 50 years.

SuperStructure means a solid framework, steel and aluminum substructures and components built in-house to our exacting standards. It means managing each detail to ensure the integrity and quality of every coach. It means barcoding parts to save time and frustration during service and running every coach through a high-pressure leak test before it leaves the factory.

Where other manufacturers cut corners, SuperStructure ensures the features you can't see are treated with the same care as the ones you can. When you buy a Winnebago motor home, you are getting a coach that is built for you—and built to last.