

2009 *Sightseer*[®]





2009 *Sightseer*®

See the country in a Winnebago Sightseer. With beautiful curved cabinetry (NA 37L) and available full-body paint, it's a coach you'll want to be seen in, too. Inside you'll find exciting features like a 37" LCD TV in the 31E and 37L and available UltraLeather™ furniture and cab seats. Plus, it has all the SmartSpace™ amenities you expect in a Winnebago motor home to make the most of the available space. Choose between the standard Ford® chassis or available Workhorse™ chassis. With so many choices, including the new 37L, a triple-slideout floorplan with traditional-style honey cherry cabinetry and an available fireplace, it's easy to see yourself in a 2009 Winnebago Sightseer.

Perfectly appointed.

A complete galley provides everything you need to prepare delightful meals or quick snacks for you and your guests, including a Magic Chef® three-burner range top and a microwave oven. For added cooking flexibility, choose the microwave/convection oven. Plentiful storage with full-extension drawer slides holds all of your kitchen tools. Select the interior upgrade package for accent rope lighting (NA 37L), a galley backsplash, galley sink covers and the Dream Dinette™ table (NA 37L) that easily adjusts up or down with one-handed operation.

The 35J entertainment center comes with a 19" TV or an available 32" TV. It is connected to the dash stereo, which includes a CD/DVD player for your favorite movies. Watch the TV from the sofa, lounge chair or available Euro chair and ottoman (31E & 35J).



The **WEB** icon designates a Winnebago Industries Key Feature. For further in-depth information and photos, use the drop-down Menu or click on the 'Key Features' page at gowinnebago.com.



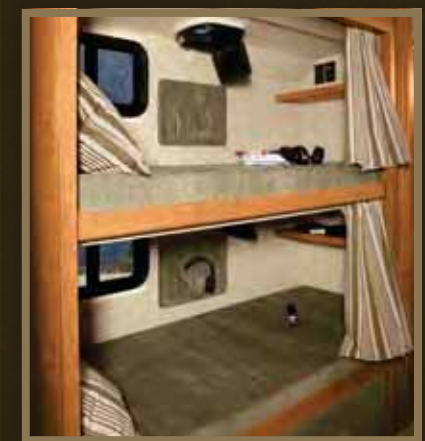
SLEEP TIGHT A generous rear slideout creates a comfortable and inviting bedroom. A queen-size bed on the 29R and 31E and a king-size bed on the 35J and 37L provide a great night's rest. A 20" TV is available, which incorporates easy-access connection points in the wall if you want to connect a DVD player.



SOFA/SLEEPER A sofa that readily converts to a bed is standard. Upgrade to the added comfort of the sofa/airbed that automatically inflates at the flip of a switch (31E, 35J & 37L).



WEB BenchMark® The BenchMark full-comfort dinette features innerspring cushions and is shown here with the upgraded Dream Dinette table, which easily adjusts with one hand for quick conversion to a comfortable bed.



BUNK BEDS Let the kids drift off to their favorite movie. Personal DVD players can be added to the bunk beds in the 35J.



HIGH STYLE

The Sightseer looks and feels good with stainless steel wheel liners and available, energy-efficient dual-glazed windows.

Travel without reservation.

It's easy to plan for trips when you know you have plenty of available storage and the ability to tow up to 5,000⁶ pounds. Reach your destination and stretch out beneath the available patio awning. It is a fine complement to the standard graphics packages or the available full-body paint.

A 5,500-watt Cummins Onan® Marquis Gold™ generator (4,000-watt MicroQuiet™ on the 29R) and two new larger-capacity Group 31 batteries that deliver 33% more amp-hours provide power for the available exterior entertainment center when no shoreline source is available.



WEB STORE MORE StoreMore storage compartments extend with the slideroom for easy access to all your gear (NA 37L).



ONE PLACE
POWERLINE®
TRUELEVEL
HOLDING TANK MONITORING SYSTEM
WEB

SYSTEMS CENTER The OnePlace systems center houses all of your important switches and gauges. The PowerLine energy management system monitors 110-volt usage and cycles appliances on and off to prevent campground overloads (NA 29R). TrueLevel uses sonar technology to read liquid levels from outside the tank. There are no probes to corrode or clog, just accurate readings time after time.



WEB **QuickPort**. The QuickPort service connection hatch allows you to stay connected with the bay door closed.



EXTERIOR ENTERTAINMENT CENTER The available exterior entertainment center includes AM/FM stereo, CD player, remote, removable table and a lockable compartment.



SIDEVIEW CAMERAS Available sideview cameras activate with the turn signal for added confidence when maneuvering.



WEB **position controls**. The available hydraulic jacks can be controlled from the cab, entrance door or service center so you can watch the jacks lower into position.

50 years on the road

Since the first Winnebago Industries RV rolled off the assembly line 50 years ago, the RV lifestyle has grown from a curiosity to a phenomenon. We're proud to have led the way with innovative products, quality construction and a passion for customer satisfaction. Join all of us in the extended Winnebago Industries family as we celebrate 50 years of travel, tailgates and extended weekends.

Standard Graphics



*MEDIUM PARCHMENT
w/BRIGHT PLATINUM
METALLIC*



*MEDIUM PARCHMENT
w/CATALINA BLUE*

Full-body Paint



TEAKWOOD



GOLDEN STONE

Full-body Paint



CRIMSON CHARCOAL

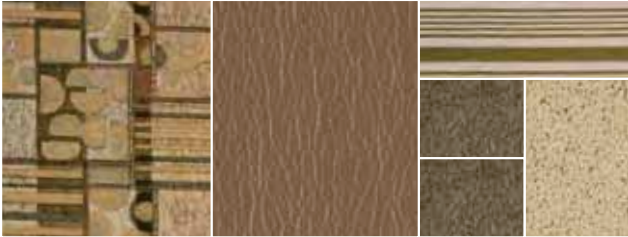


50 YEARS ON THE ROAD

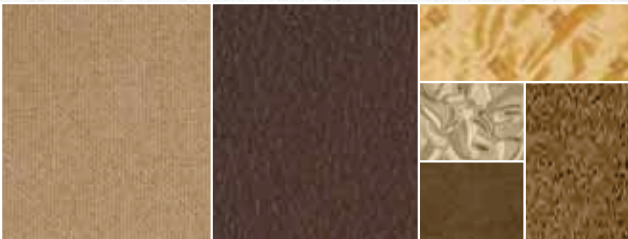
Interior Decor

Choose from three fabric selections and three cabinet wood choices with hidden hinges.

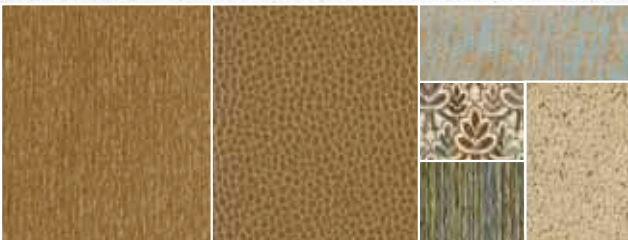
| | | | |
|------|---------------|-----------|--------|
| MAIN | ULTRA-LEATHER | BEDSPREAD | |
| | | ACCENT | CARPET |
| | | ACCENT | |



ASPEN LEAF WITH AVAILABLE PINE CONE ULTRALEATHER™



SESAME SEED WITH AVAILABLE TRUFFLE ULTRALEATHER



HAMPTON BLUE WITH AVAILABLE FIELDS ULTRALEATHER



HONEY CHERRY



WASHED MAPLE



*HONEY CHERRY
TRADITIONAL STYLE
(37L ONLY)*

Chassis

Ford® F53 chassis

- 362-hp 6.8L Super Duty V10 SOHC Triton® engine
- TorqShift™ 5-speed automatic transmission
- Hydraulic brakes
- 4-wheel ABS
- 130-amp. alternator

7-pin trailer wiring

Trailer hitch⁶: 5,000-lb. drawbar/500-lbs. maximum vertical tongue weight

Stainless steel wheel liners

| 29R | 31E | 35J | 37L |
|-----|-----|-----|-----|
| ○ | ○ | ○ | ○ |
| ○ | | | |
| | | | |
| ○ | ○ | ○ | ○ |

Optional Equipment

Automatic leveling jacks w/3-position controls

Workhorse™ W18 chassis

- 340-hp 8.1L GM Vortec™ V8 engine
- 4L85-E 4-speed transmission
- Hydraulic brakes
- 4-wheel ABS
- 145-amp. alternator

Workhorse W22 chassis

- 340-hp 8.1L GM Vortec V8 engine
- Allison® 1000MH 6-speed transmission
- Hydraulic brakes
- 4-wheel ABS
- 145-amp. alternator

Cab Conveniences

Fabric cab seats w/armrests, lumbar support, multi-adjustable slide/recline/swivel

AM/FM radio w/CD/DVD player, alarm clock, weather band, iPod/MP3 input, remote

Chassis/house battery radio power switch

Tilt steering wheel

Cruise control

Map lights

Sunvisors

C.B. wire prep

| 29R | 31E | 35J | 37L |
|-----|-----|-----|-----|
| ○ | ○ | ○ | ○ |
| ○ | ○ | ○ | ○ |
| ○ | ○ | ○ | ○ |
| ○ | ○ | ○ | ○ |

Optional Equipment

Rearview monitor system

Sideview camera monitor system (requires rearview monitor system)

Defroster fans

Power mirrors w/defrost

Interior

19" LCD TV (29R & 35J) (front overhead)

20" LCD TV (37L) (dining area)

37" LCD TV (31E & 37L) (mid coach)

Satellite system ready

Cab wraparound curtain

Mini blinds (lounge and dinette)

OnePlace® systems center

Roof vent (lounge)

| 29R | 31E | 35J | 37L |
|-----|-----|-----|-----|
| | ○ | | ○ |
| ○ | | ○ | |
| ○ | ○ | ○ | ○ |
| ○ | ○ | ○ | ○ |
| ○ | ○ | ○ | ○ |
| ○ | ○ | ○ | ○ |
| ○ | ○ | ○ | ○ |
| ○ | ○ | ○ | ○ |
| ○ | ○ | ○ | ○ |

Optional Equipment

Electric fireplace

19" LCD TV w/remote (front overhead)

26" LCD TV (dining area)

32" TV (front overhead)

Interior Upgrade Package: rope lighting (NA 37L), range backsplash, Dream Dinette™ dining table (NA 37L), range cover, Titanium Touch™ stainless finish refrigerator doors, galley sink covers, 2 throw pillows, single-control lavatory faucet

Day/night pleated shades (lounge and dinette)

Dual-glazed, thermo-insulated windows

Vinyl floor covering (lounge)

Satellite dish antenna

Powered roof vent (lounge)

Galley

Laminate countertops

2-door refrigerator/freezer

Microwave oven

3-burner range top w/drawers below

Vented range hood

Mini blinds

| 29R | 31E | 35J | 37L |
|-----|-----|-----|-----|
| ○ | ○ | ○ | ○ |
| ○ | ○ | ○ | ○ |
| ○ | ○ | ○ | ○ |

Optional Equipment

Microwave/convection oven

3-burner range w/oven

Bath

Laminate countertop

Handheld showerhead

Skylight

Powered roof vent

Bedroom

King Serta® innerspring mattress (35J & 37L)

Queen Serta innerspring mattress (29R & 31E)

Foam mattress (bunk beds 35J)

Pleated shades

| 29R | 31E | 35J | 37L |
|-----|-----|-----|-----|
| ○ | ○ | ○ | ○ |
| ○ | ○ | ○ | ○ |
| ○ | ○ | ○ | ○ |

Optional Equipment

2 DVD players w/headphones, 8.5" LCD monitors (bunk area)

20" LCD TV

Day/night pleated shades

Exterior

Automatic entrance door steps

Lighted storage compartments

| 29R | 31E | 35J | 37L |
|-----|-----|-----|-----|
| ○ | ○ | ○ | ○ |
| ○ | ○ | ○ | ○ |
| ○ | ○ | ○ | ○ |
| ○ | ○ | ○ | ○ |
| ○ | ○ | ○ | ○ |
| ○ | ○ | ○ | ○ |

Optional Equipment

Vinyl patio awning

Acrylic patio awning w/metal wrap (requires full-body paint)

Entertainment center w/AM/FM, CD player and remote

Vetrolite® smooth high-gloss skin

Ladder

Lower front protective mask w/full-body paint

Heating and Cooling System

14,800 BTU roof air conditioner (29R)

Two high-efficiency roof air conditioners w/EMS (31E, 35J & 37L)

30,000 BTU low-profile furnace (29R)

35,000 BTU low-profile furnace (31E)

40,000 BTU low-profile furnace (35J & 37L)

In-floor heat ducting

| 29R | 31E | 35J | 37L |
|-----|-----|-----|-----|
| ○ | ○ | ○ | ○ |
| | | | |
| ○ | ○ | ○ | ○ |

Optional Equipment

One A/C heat pump

Two high-efficiency A/C heat pumps

Electrical System w/QuickPort®

AC/DC load center, DC fuses, 120V AC circuit breakers, 45-amp. converter/charger (29R)

AC/DC electrical distribution system, AC/DC breaker panel, 45-amp. converter/charger w/remote (31E, 35J & 37L)

30-amp. power cord

4,000-watt Cummins Onan® MicroQuiet™ gas generator (29R)

5,500-watt Cummins Onan Marquis Gold™ gas generator (31E, 35J & 37L)

2 deep-cycle, Group 31 batteries

Chassis battery disconnect system

PowerLine® energy management system (NA 29R)

Automatic dual battery charge control

Auxiliary start circuit

| 29R | 31E | 35J | 37L |
|-----|-----|-----|-----|
| ○ | ○ | ○ | ○ |
| ○ | ○ | ○ | ○ |
| | | | |
| ○ | | | |

Optional Equipment

50-amp. power cord

300-watt inverter

600-watt inverter

Plumbing System w/QuickPort

Service Center:

cable TV input, city water hook-up w/diverter valve, 3" drainage valve, exterior wash station, portable satellite dish hook-up, power cord, 10' sewer hose

6-gallon water heater

TrueLevel™ holding tank monitoring system

Winterization Package:

water heater bypass valve and siphon tube

| 29R | 31E | 35J | 37L |
|-----|-----|-----|-----|
| ○ | ○ | ○ | ○ |
| ○ | ○ | ○ | ○ |
| ○ | ○ | ○ | ○ |

Optional Equipment

Exterior wash station w/pump switch

6-gallon water heater w/motoraid

Safety

Seat belts

Child seat anchor, forward facing dinette seat (NA 37L)

LP, smoke and carbon monoxide detectors

10 BC fire extinguisher

Ground fault interrupter

High-mount brake lights

Warranty⁷

12-month/15,000-mile basic warranty;⁸ 36-month/36,000-mile limited warranty on structure;⁸ 10-year limited parts and labor warranty on roof skin⁸

- The height of each model is measured to the top of the tallest standard feature and is based on the curb weight of a typically equipped unit. The actual height of your vehicle may vary by several inches depending on chassis or equipment variations. Please contact your dealer for further information.
- Sightseer floorplans feature a wide-body design – over 96". In making your purchase decision, you should be aware that some states restrict access on some or all state roads to 96" in body width. Before making your purchase decision, you should confirm the road usage laws in the states of interest to you.
- The load capacity of your motor home is designated by weight, not by volume, so you cannot necessarily use all available space when loading your motor home.
- Capacities are based on measurements prior to tank installation. Slight capacity variations can result due to installation applications.
- Capacities shown are tank manufacturer's listed water capacity (WC). Actual filled LP capacity is 80% of listing due to overfilling prevention device on tank.
- Actual towing capacity is dependent on your particular loading and towing circumstances which includes the GVWR, GAWR, and GCWR as well as adequate trailer brakes. Please refer to the Operator's Manual of your vehicle for further towing information.
- See separate chassis warranty details provided in Owner's Manual.
- See your dealer for complete warranty information.

○ Optional.

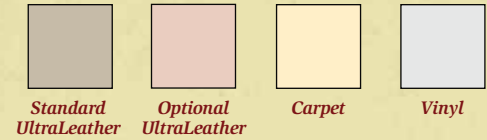
NA Not Available.

Not all items available in combination. See dealer for details.

Winnebago Industries® continuing program of product improvement makes specifications, equipment, model availability, and prices subject to change without notice. Comparisons to other motor homes are based on the most recent information available at printing.

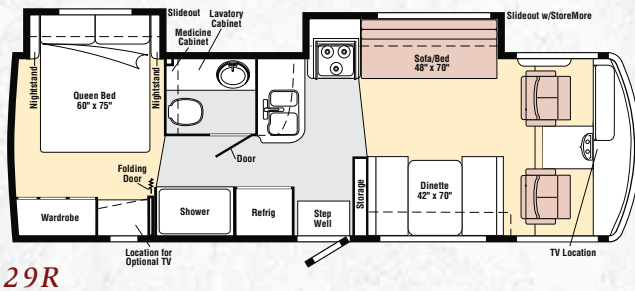
2009 *Sightseer*® Floorplans & Specifications

Dimensions shown are for sleeping space only and may vary due to styling differences. Dashed lines denote overhead storage areas. Floorplans and specifications are also available online at: gowinnebago.com

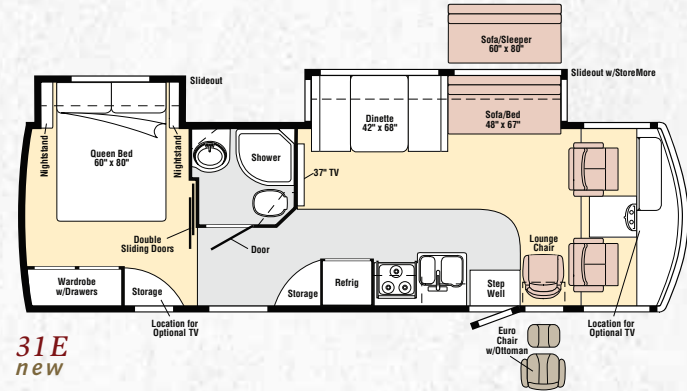


| Weights & Measures | 29R | 31E | 35J | 37L |
|--|--|--|--|--|
| Length | 29'9" | 32'4" | 35'3" | 38' |
| Exterior Height ¹ | 12'3" | 12'3" | 12'3" | 12'5" |
| Exterior Width ² | 8'5" | 8'5" | 8'5" | 8'5" |
| Exterior Storage ³ (cu. ft.) | 77.5 | 92.9 | 101.8 | 76 |
| Awning Length - Front/Rear | 16' | 14' | 14' | 11'6"/17' |
| Interior Height | 6'8" | 6'8" | 6'8" | 6'8" |
| Interior Width | 8'0" | 8'0" | 8'0" | 8'0" |
| Freshwater Capacity w/Heater ⁴ (gal.) | 84 | 84 | 75 | 70 |
| Holding Tank Capacity - Black/Gray ⁴ (gal.) | 37/41 | 38/44 | 44/48 | 47/42 |
| LP Capacity ⁵ (gal.) | 18 | 18 | 18 | 18 |
| Fuel Capacity (gal.) | 75 | 75 | 75 | 75 |
| GCWR ⁶ (lbs.) | 26,000 ^A /22,000 ^B | 26,000 ^A /26,000 ^C | 26,000 ^A /26,000 ^A /26,000 ^C | 26,000 ^A /26,000 ^C |
| GVWR (lbs.) | 18,000 ^A /18,000 ^B | 22,000 ^A /22,000 ^C | 20,500 ^A /22,000 ^A */22,000 ^C | 22,000 ^A /22,000 ^C |
| GAWR - Front (lbs.) | 7,000 ^A /7,000 ^B | 7,500 ^A /7,500 ^C | 7,500 ^A /7,500 ^A /7,500 ^C | 7,500 ^A /7,500 ^C |
| GAWR - Rear (lbs.) | 11,000 ^A /12,000 ^B | 14,500 ^A /14,500 ^C | 13,500 ^A /14,500 ^A */14,500 ^C | 14,500 ^A /14,500 ^C |
| Wheelbase | 190" | 208" | 228" | 248" |

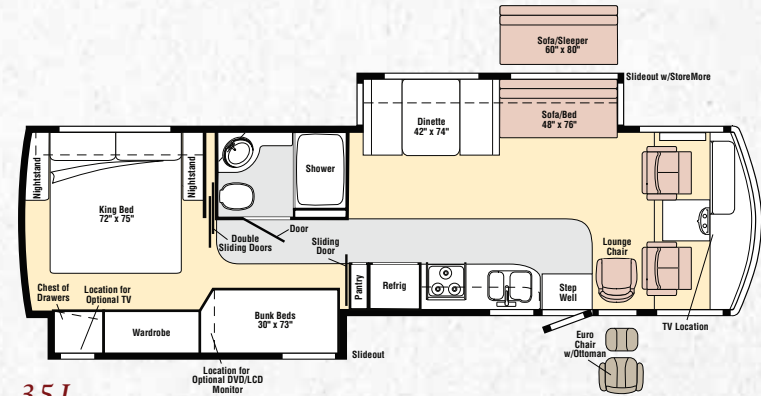
A Ford F53 Chassis **B** Workhorse W18 Chassis **C** Workhorse W22 Chassis * Running line change



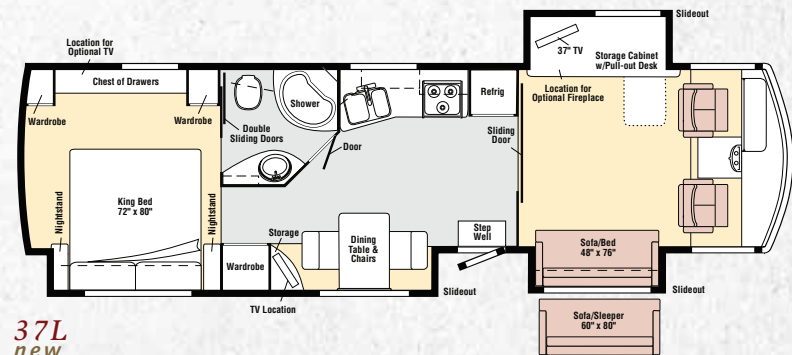
29R



31E
new



35J



37L
new

Available November 2008



Built by Winnebago Industries. Built to last.

Winnebago motor homes are built by Winnebago Industries, the company that defined motor homes. The company that built its reputation on quality construction. The company that transformed the motor home concept into a way of life.



Today, Winnebago Industries brings that reputation for quality and its 50-year history of RV innovation to the design and construction of

WEB every motor home. It's all a part of SuperStructure®, our exclusive system of proprietary structural components that instills each motor home with improved strength and durability.

Solid Foundation Steel and aluminum truss work provides a solid, flat foundation for the floor and sidewalls. Winnebago Industries engineers also take special care to distribute the weight of components to ensure proper handling and stability.



Interlocking Joints

The floor, sidewalls and roof are all integrally connected using interlocking joints. This creates a Sightseer body that

acts as a cohesive unit for improved strength and durability.

Attention to Detail Whether it's sending every Sightseer through a high-pressure water tunnel to check for leaks or labeling individual wires and barcoding parts to save time and frustration during service, Winnebago Industries considers every detail to ensure your Winnebago motor home provides you with years of pleasure.

Strong as Steel Appliances are secured directly to embedded steel plates for added safety. Windshields are also mounted in steel with an automotive-style sealant; lesser designs use a rubber gasket to mount the windshield in fiberglass.

E-Coating Winnebago Industries employs an automotive-style dip tank process to apply an advanced electrodeposition coating on critical steel components for corrosion protection.

Thermo-Panel® Sidewalls Invented by Winnebago Industries, Thermo-Panel construction combines a fiberglass panel, high-density, block-foam insulation and aluminum support structures to create some of the most durable, lightweight sidewalls in the industry.



gowinnebago.com Visit us on the web for more info on all of our motor homes, the latest product updates and a host of web-exclusive content.

Take a Tour We're proud of our process, state-of-the-art facilities and the people who make Winnebago Industries number one. We invite you to visit our complex in Forest City, Iowa, for a first-hand look at the dedication and technology behind every motor home we build.

Recognized Quality The Recreation Vehicle Dealer Association annually rates RV manufacturers and awards the Quality Circle award to manufacturers who provide exceptional products, service and support. Winnebago Industries is proud to be the only manufacturer to receive this award every year since its inception.

Committed to Service We back our motor homes with the industry's best service after the sale.

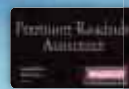
- 12-month/15,000-mile basic limited warranty
- 36-month/36,000-mile warranty on structure
- Standard 10-year limited parts-and-labor roof skin warranty
- Complimentary 24-hour roadside assistance program

- RV Technical Assistance Hotline
- RV Service Appointment Assistance
- Emergency Trip Interruption
- Emergency Message Service
- Nationwide-Trip Routing
- Fee-Free Travelers Cheques

- TripSaver Fast Track Parts. TripSaver guarantees that in-stock warranty parts ship directly to your dealer within 24 hours.
- National dealer service network

WIT Club Winnebago owners are like family. Joining the Winnebago-Itasca Travelers is a great way to meet and travel with other Winnebago enthusiasts. Members enjoy:

- Caravans and rallies
- Local and state group activities
- RV travel benefits



1-year-old Winnebago fiberglass roof



1-year-old competitor's rubber roof

Fiberglass Roof The Sightseer features a crowned, one-piece fiberglass roof, backed with a 10-year limited parts-and-labor roof skin warranty. Fiberglass offers superior strength, attractiveness and durability over the rubber roofs found on many competitive models which can chalk, streak and degrade over time. Fiberglass also provides increased puncture and tear resistance.

Built proudly by



NYSE listing: WGO

For Sales and Service Information Contact:

Printed in USA

Seat belts are your most important hookup. Always buckle up.
© 2008 Winnebago Industries, Inc.