

2007

WINNEBAGO  
Adventurer®

Adventurer





WEB  SMARTSPACE

38T Light Box with Sierra Maple

## Your Home On the Road.

For 2007, the industry's best-selling Class A motor home is even better. The moment you step inside the Adventurer you'll notice the spaciousness created by the 7-foot-2.5-inch ceiling. The roomy coach is enhanced by our SmartSpace™ design philosophy, which makes the most of interior living areas by maximizing functionality and incorporating space-saving, user-friendly features.

To keep you comfortable, our Home Comfort Plus Package comes standard on all models — providing an auxiliary automotive heater; insulated, power roof vents; and a heat pump that provides warmth for your coach without using the LP furnace. Plus, standard dual-glazed windows provide increased thermal efficiency. To control the amount of light and for additional privacy, our standard day/night pleated shades are found in the lounge, dinette and bedroom areas.

New for 2007, your Adventurer comes standard with a full-coach water filtration system, so whether you're enjoying a glass of ice water or taking a relaxing shower, you'll know the water will be consistently fresh and clean.

You can even stretch your legs by the fire in the available Euro Lounge Chair, when you select the electric fireplace in the lower portion of the stand-alone entertainment center (available on the 38T).

On the cover: 38T with Pearl II Full-Body Paint



## Maximum Entertainment.

After an enjoyable day of RVing, you can spend the evening watching your favorite TV show or movie. Every Adventurer comes with a standard 27-inch Sony® flat-face TV. The large television is complemented by unparalleled sound and picture quality is delivered by the standard Home Theatre Sound System and DVD player.

Add the available King-Dome® in-motion satellite dish, which provides excellent reception and a wide variety of channels. And for added convenience, the available 600-watt inverter lets you enjoy your favorite programs even when you're not connected to shoreline or generator power.

**WEB** Select a Key Feature

The **WEB** icon designates a Winnebago Industries Key Feature. For further in-depth information and photos, use the Search Window or click on the Key Features page at [winnebagoind.com](http://winnebagoind.com).



35A Sahara Sun with Washed Maple



### J-Lounge.

The J-Lounge includes a power recliner (standard on 38J only).



### Hoop-Base Lounge Chair.

The hoop-base lounge chair is amazingly comfortable and can be moved to your favorite spot when parked.



**WEB**

### Rest Easy.

The Rest Easy® multi-position lounge glides from a couch to a recliner to a comfortable bed at the touch of a button.



35A

There's no shortage of upscale cooking options, thanks to the standard microwave oven with exhaust fan and the three-burner range, which features a storage drawer below. Or choose the available microwave/convection oven.



Drawer Slides

## A Recipe for Great Meals.

Indirect lighting gives the galley a stylish ambiance, and the solid-surface countertops provide plenty of space to prepare your favorite dishes. A separate faucet with a water filtration system comes standard on all models.

The large four-door refrigerator/freezer with icemaker gives you even more cold storage and is available as an upgrade from the standard double-door unit. A conveniently located pantry provides plenty of storage space to keep you well-stocked for lengthy trips.

Enjoy your meals at the free-standing table with drop leaves, or you can choose the BenchMark™ full-comfort dinette. The BenchMark offers innerspring seat cushions and contemporary styling. Flip up the seats to access the large storage spaces or fold down the table to quickly convert the dinette into a comfortable bed.

### Refrigerator.

The refrigerator features Titanium Touch stainless finish doors, a Winnebago Industries exclusive, which has the look of stainless steel, resists fingerprints and is warmer to the touch than traditional stainless steel. As an added benefit, you can even use your favorite kitchen magnets.



titanium TOUCH  
STAINLESS



### Dining Room Table.

The dining room table has a residential feel and comes with drop leaves, so you can add more room to your dining experience.



### Wastepaper Basket.

We pay attention to the smallest details; that's why we've added formed handles to the wastebasket, so you can easily use a plastic grocery bag in place of a garbage bag.



WEB

BenchMark  
FULL-COMFORT DINETTE

### BenchMark Dinette.

This full-comfort dinette offers storage and a child-seat tether (not available on the 38J).

## A Bedroom to Call Your Own.

The standard rear slideout turns the Adventurer's spacious bedroom into your own personal haven where you can catch some Z's in the standard walk-around queen-sized bed (king-size available on the 35L). Plus, you'll find abundant living and storage space, thanks to the beautiful wardrobe and cabinetry.

You can watch your favorite show on the bedroom's standard 20-inch (24-inch on the 37B) flat-face TV. The available rear stereo system includes AM/FM radio with CD and DVD players and alarm clock. The auxiliary input allows you to listen to MP3s through speakers.

The bathroom feels like home, thanks to the residential-height toilet and the Moen® Posi-Temp® valve, which maintains consistent shower temperature even if the water pressure fluctuates.



38T Light Box with Sierra Maple



### Bath.

*The bathroom is spacious and well designed. Add the available shower upgrade package, which provides a fold-down shower seat and a handheld showerhead.*



### Washer/Dryer.

*Planning an extended trip or stay? Do the laundry in the comfort of your motor home when you add the washer/dryer combination (not available on the 33V or 35L with king-sized bed).*



### Sleep Number Bed®

*The available Vantage Point™ Sleep Number bed by Select Comfort™ includes digital hand controls that let you quickly adjust the firmness of each side of the mattress to your Sleep Number — Your Key to a Perfect Night's Sleep™.*



The workstation is great for a laptop computer and it slides forward to access the storage compartment.



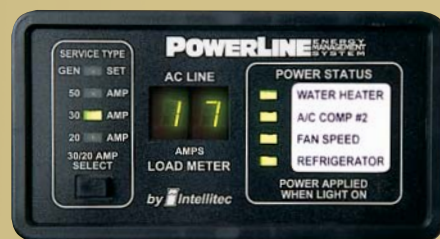
## A Dash Built Around You.

Your Adventurer will put you at ease behind the wheel with conveniently placed controls and features such as the standard rearview monitor and map light. The available sideview cameras activate with the turn signal for added peace of mind when turning and maneuvering. Manual sun visors are standard or you can choose powered sun visors that adjust at the touch of a button. For added comfort and class, select the available leather driver and passenger seats. The six-way power assist for the driver seat lets you adjust perfectly to your favorite position.

The RV Radio® includes AM/FM stereo; CD player; weather band; and large, easy-to-use buttons and knobs. For added versatility, the RV Radio comes with two remotes—one handheld and one on the steering wheel. Upgrade your RV Radio with the available Sirius® Satellite Radio package, which comes with a free six-month subscription (not available in Canada). Sirius brings you 120 channels of crystal clear programming.



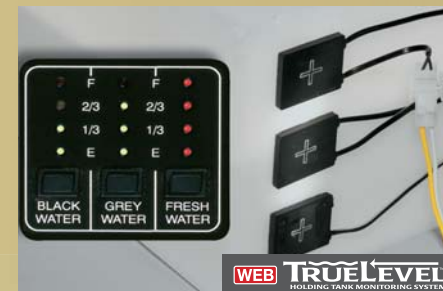
**OnePlace®**  
This complete systems center places frequently used switches, gauges and controls in one convenient location.



**WEB POWERLINE®**  
**PowerLine®**  
This energy management system monitors electrical usage and automatically cycles postponable appliances on and off to prevent campground circuit overloads.



**TRUEAIR®**  
This residential central air conditioning system cools 40 percent faster and runs 10 percent quieter than roof airs. The key is a Coleman®-Mach® cooling unit located in the basement for a lower vehicle profile.



**TRUELEVEL™**  
Eliminate the guesswork when it comes to tank levels with our exclusive TrueLevel holding tank monitoring system. It incorporates detector cells that sense liquid levels from outside the tank. No probes mean no more corrosion, just accurate readings time after time.

## Features You'll Appreciate.

A Winnebago Industries original, StoreMore® is the industry's premium slideout system. StoreMore features large, well-lit exterior storage compartments designed to accommodate bulky and odd-shaped items. Automatic exterior compartment lights are door activated and a master light switch is located in the entrance area. Best of all, these compartments extend along with the slideroom for easy access. No more crawling on your hands and knees to get your gear. You'll also appreciate how easy it is to open the exterior compartment doors, thanks to single-paddle latches and gas struts.



**STOREMORE** WEB



Entrance Door



Dash Pad



Service Center



### Exterior Entertainment Center.

Bring your entertainment outdoors with the exterior entertainment center, which includes AM/FM radio with remote, CD player, speakers, 12-volt powerpoint and 110-volt outlet.



WEB

**QuickPort**  
SERVICE CONNECTION HATCH

### Service Center.

The QuickPort® service connection hatch allows the bay door to close while your hookups are connected. The QuickConnect® coupling valve on the sewer hose makes for fast and clean hookups and has its own storage holster.



WEB

**QuickConnect**



Lakeside



Light Box



Sahara Sun



A-Main Fabric  
B-Carpet  
C-Accent



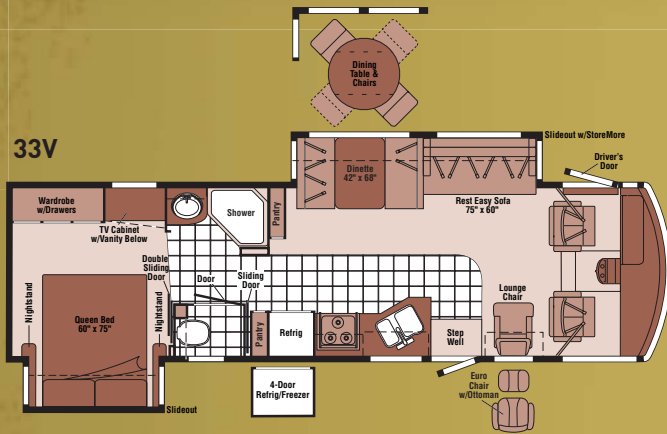
Concert Cherry



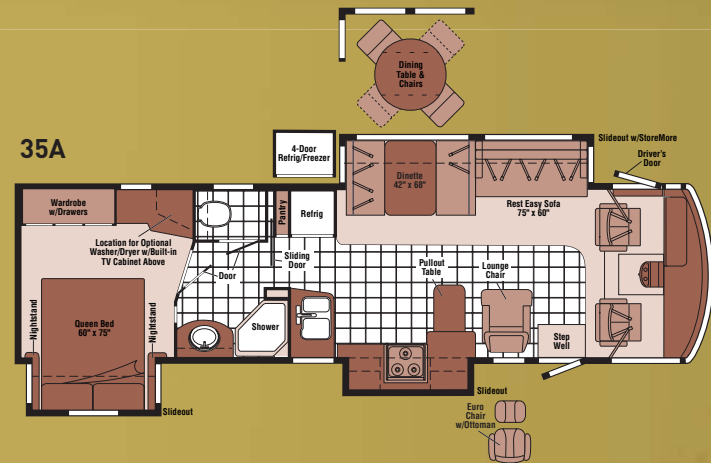
Sierra Maple



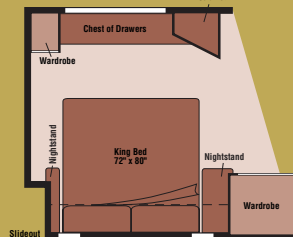
Washed Maple



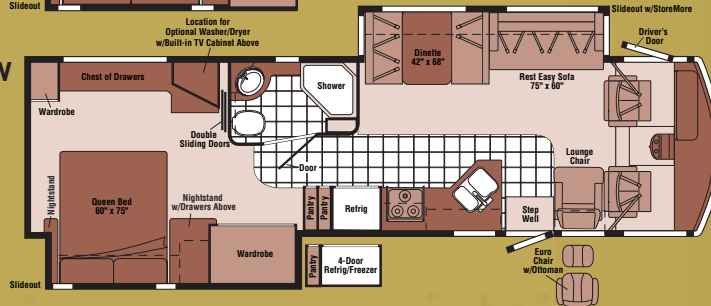
33V



35A



35L - NEW



Note: Dimensions shown are for sleeping space only and may vary due to styling differences. Dashed lines denote overhead storage areas.





WEIGHTS & MEASURES	33V	35A	35L NEW	37B	38J	38T
Length	33'7" <sup>A</sup> /33'7" <sup>B</sup>	35'11" <sup>A</sup> /35'11" <sup>B</sup> /35'11" <sup>C</sup>	36' <sup>A</sup> /36' <sup>B</sup> /36' <sup>C</sup>	38'1" <sup>C</sup>	38'10" <sup>C</sup>	38'9" <sup>C</sup>
Exterior Height <sup>1</sup>	12'2" <sup>A</sup> /12'1" <sup>B</sup>	12'2" <sup>A</sup> /12'2" <sup>B</sup> /12'2" <sup>C</sup>	12'2" <sup>A</sup> /12'2" <sup>B</sup> /12'1" <sup>C</sup>	12'1"	12'	12'1"
Exterior Width <sup>2</sup>	8'5.5"	8'5.5"	8'5.5"	8'5.5"	8'5.5"	8'5.5"
Exterior Storage <sup>3</sup> (cu. ft.)	68.8	93.1	87.5	107.4	97.4	116.9
Awning Length	18'	20'	15'	19'	19'	13'
Interior Height	7'2.5"	7'2.5"	7'2.5"	7'2.5"	7'2.5"	7'2.5"
Interior Width	8'5"	8'5"	8'5"	8'5"	8'5"	8'5"
Freshwater Capacity w/Heater <sup>4</sup> (gal.)	86	88	86	88	88	88
Holding Tank Capacity – Black/Gray <sup>5</sup> (gal.)	55/43	50/75	65/49	50/58	51/53	53/70
LP Capacity <sup>6</sup> (gal.)	28	28	28	28	28	28
Fuel Capacity (gal.)	75	75	75	75	75	75
GCWR <sup>7</sup> (lbs.)	26,000 <sup>A</sup> /26,000 <sup>B</sup>	26,000 <sup>A</sup> /26,000 <sup>B</sup> /30,000 <sup>C</sup>	26,000 <sup>A</sup> /26,000 <sup>B</sup> /30,000 <sup>C</sup>	30,000 <sup>C</sup>	30,000 <sup>C</sup>	30,000 <sup>C</sup>
GVWR (lbs.)	22,000 <sup>A</sup> /22,000 <sup>B</sup>	22,000 <sup>A</sup> /22,000 <sup>B</sup> /24,000 <sup>C</sup>	22,000 <sup>A</sup> /22,000 <sup>B</sup> /24,000 <sup>C</sup>	24,000 <sup>C</sup>	24,000 <sup>C</sup>	24,000 <sup>C</sup>
GAWR – Front (lbs.)	7,500 <sup>A</sup> /8,500 <sup>B</sup>	7,500 <sup>A</sup> /8,500 <sup>B</sup> /9,000 <sup>C</sup>	7,500 <sup>A</sup> /8,500 <sup>B</sup> /9,000 <sup>C</sup>	9,000 <sup>C</sup>	9,000 <sup>C</sup>	9,000 <sup>C</sup>
GAWR – Rear (lbs.)	14,500 <sup>A</sup> /15,000 <sup>B</sup>	14,500 <sup>A</sup> /15,000 <sup>B</sup> /15,500 <sup>C</sup>	14,500 <sup>A</sup> /15,000 <sup>B</sup> /15,500 <sup>C</sup>	15,500 <sup>C</sup>	15,500 <sup>C</sup>	15,500 <sup>C</sup>
Wheelbase	208" <sup>A</sup> /208" <sup>B</sup>	228" <sup>A</sup> /228" <sup>B</sup> /228" <sup>C</sup>	228" <sup>A</sup> /228" <sup>B</sup> /228" <sup>C</sup>	248" <sup>C</sup>	248" <sup>C</sup>	266" <sup>C</sup>

Standard - S Optional - O	33V	35A	35L	37B	38J	38T
<b>AUTOMOTIVE/CHASSIS</b>						
<b>A - Ford® Chassis</b> – 6.8L Super-Duty V10 SOHC Triton® engine, 362-hp, Torqshift™, 5-speed overdrive transmission, 130-amp. alternator, 4-wheel ABS, <b>Tires</b> 22.5"; <b>Wheels</b> stylized aluminum	S	S	S			
<b>B - Workhorse™ Chassis</b> – 8.1L Vortec V8, 340-hp, Allison® 1000 Series™ 6-speed electronic overdrive transmission, 145-amp. alternator, 4-wheel ABS, <b>Tires</b> 22.5"; <b>Wheel Liners</b> stainless steel	O	O	O			
<b>C - Workhorse Chassis</b> – Workhorse 8.1L Vortec V8, 340-hp, Allison 2100 Series 6-speed electronic overdrive transmission, 145-amp. alternator, 4-wheel ABS, <b>Tires</b> 22.5"; <b>Wheel Liners</b> stainless steel		O	O	S	S	S
<b>Leveling Jacks</b> HWH® hydraulic, with three-way switching system, <b>Trailer Hitch</b> † 5,000-lb. drawbar/500 lbs. maximum vertical tongue weight & 7-pin wiring connector	S	S	S	S	S	S
<b>Wheels</b> stylized aluminum (Workhorse chassis)	O	O	O	O	O	O
<b>CAB AREA &amp; DRIVER CONVENIENCES</b>						
<b>Cab Seats (Fabric)</b> multiposition armrests, headrest, manually adjustable lumbar support, multiadjustable swivel/slide/recline, <b>Cab Sound Control Package</b> , <b>Cigarette Lighter/12-Volt DC Powerpoint</b> , <b>Convenience Tray</b> , <b>Cruise Control</b> , <b>Door</b> driver w/power window, assist bar, KeyOne™ System (common key w/entrance door & exterior storage compartments), trim panel w/beverage holder, storage pocket, power mirror controls, <b>Courtesy Light</b> , <b>Map Lights</b> , <b>Monitor System</b> b/w rearview w/single camera & 1-way audio, <b>Shades</b> front wraparound, <b>Trim Panel</b> passenger side w/beverage holder, storage, switch appliqué, 12-volt DC powerpoint, <b>Steering Wheel</b> tilt w/power assist, <b>Sunvisors</b> , <b>Window (Passenger)</b> full-slider w/screen, dual-glazed/thermo-insulated, <b>Windshield Wipers</b> intermittent, <b>Workstation</b> in-dash	S	S	S	S	S	S
<b>Cab Seats (Leather w/Vinyl Surround)</b> , <b>Cab Seat Pedestal</b> 6-way power assist (driver), <b>Defroster Fans (2)</b> auxiliary 2-speed w/instrument panel switch, <b>Sunvisors (2)</b> powered, switch, <b>Video Camera System</b> 2 side-mounted cameras	O	O	O	O	O	O

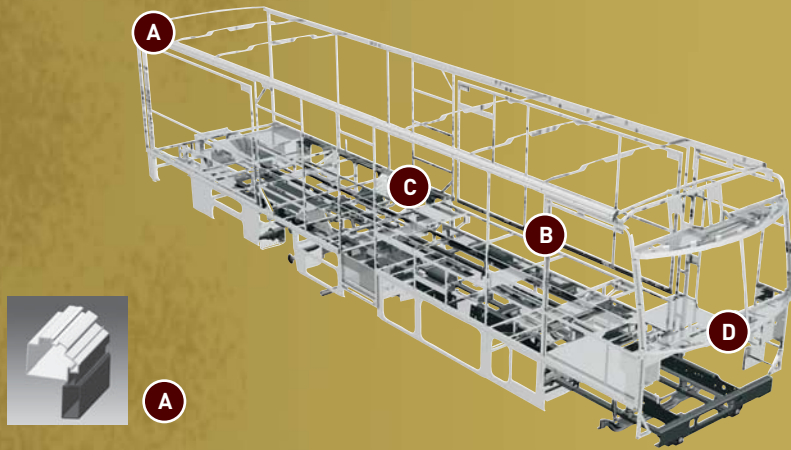
Standard - S Optional - O	33V	35A	35L	37B	38J	38T
<b>ENTERTAINMENT</b>						
<b>C.B. Prep</b> 12-volt DC powerpoint, <b>Entertainment Center w/CD Player (Exterior)</b> DC receptacle, AC duplex receptacle, AM/FM radio, radio antenna, speakers (2), lockable compartment, removable table (NA on 38T), <b>Home Theater Sound System</b> amplifier, DVD, receiver, speakers (5), <b>RV Radio® (Cab)</b> AM/FM/stereo/CD player w/weather band, remotes, roof-mounted flexible rubber antenna, <b>Radio Power Switch</b> main/auxiliary battery, <b>Satellite System Ready</b> , <b>Telephone</b> input & interior jacks, <b>TV Enhancement Package</b> antenna (amplified), interior jacks, exterior jack, coax wiring, cable input, <b>Video Selection System</b>	S	S	S	S	S	S
<b>Compact Multidisc Changer</b> , <b>Radio Satellite</b> Sirius® (includes 6-month subscription, NA in Canada), <b>Satellite Dish Antenna</b> RV digital, elevation sensing unit, manual or power, <b>Satellite Dish Antenna</b> RV digital, in-motion, King-Dome®, <b>Stereo System (Rear)</b> AM/FM/CD/DVD player, alarm clock, front TV jack (plays MP3)	O	O	O	O	O	O
<b>Entertainment Center</b> TV 27" flat-face, stereo, color AC w/remote, Sony®				S	S	S
<b>TV</b> 20" flat-face, color, AC w/remote, bedroom, RCA®, storage shelf	S	S	S		S	S
<b>TV</b> 24" flat-face, color, AC w/remote, bedroom, Sony				S		
<b>TV</b> 27" flat-face, stereo, color, AC w/remote, Sony (front overhead)	S	S	S	O		
<b>TV</b> 27" flat-face, stereo, color, AC w/remote, Sony, hutch cabinet, remote extender				O		
<b>INTERIOR</b>						
<b>Ceiling</b> vinyl, <b>Countertops</b> solid-surface, galley & bath, <b>Lights</b> ceiling, incandescent, bath, bedroom w/wall switches, <b>Light</b> decorative oval, <b>Lights</b> fluorescent, recessed, galley & lounge w/wall switches, <b>Lights</b> reading, <b>Mini Blinds</b> galley & bath, <b>Shades</b> day/night pleated, lounge, dinette, & bedroom, <b>Windows</b> flush-mounted/dual-glazed/thermo-insulated	S	S	S	S	S	S
<b>Fireplace</b> electric						O

Standard - S	Optional - O	33V	35A	35L	37B	38J	38T	
<b>FURNITURE</b>								
Dining Table & Chairs freestanding (2), folding (2)		0	0	0	0	S	S	
BenchMark™ Full Comfort Dinette access to storage below		S	S	S	S		0	
Lounge Chair (Leather) hoop-base, Rest Easy® Multi-Position Lounge (Fabric or Leather) dual-control, 75" x 60"; Lounge Chair (Leather) Euro recliner w/ottoman		0	0	0	0	0	0	
Lounge Chair (Fabric) hoop-base, recliner, rocker, footrest		S	S	S	S	S	S	
Rest Easy Multi-Position Lounge (Fabric) throw pillows, 75" x 60"		S	S	S	S	0		
Rest Easy Multi-Position Lounge (Fabric) power recliner, dual-trundle, throw pillows, 75" x 70"							S	
Rest Easy Multi-Position Lounge (Leather)		0	0	0	0	0	0	
Sofa (Fabric) J-lounge, power recliner, drawer below						S		
Sofa (Leather) J-lounge, power recliner, drawer below						0		
Cabinet end table, magazine rack							S	
<b>GALLEY</b>								
Cutting Board slideout, Faucet single-control w/pullout sprayer, Light undercabinet, Lights indirect, Microwave Oven w/vented range fan, touch control, black, Pantry, Range Top 3-burner w/storage below, sealed burners w/1 high output, backsplash, Amana®, Range Cover, Refrigerator/Freezer large double-door, Titanium Touch stainless finish, Norcold®, Wastepaper Basket, Water Purification System w/separate faucet		S	S	S	S	S	S	S
Appliance Storage Cabinet(s), Decorative Storage Cabinet			S					
Countertop Flip-Up Extension(s)		S	S	S	S	S		
Microwave/Convection Oven w/vented range fan, touch control, stainless steel, Sharp®, Range 3-burner w/large oven, recessed, sealed burners, 1 w/high-output, Amana, Refrigerator/Freezer large double-door w/icemaker, 4-door w/icemaker, Titanium Touch stainless finish, Norcold		0	0	0	0	0	0	
<b>BATH</b>								
Cabinet lavatory, Cabinet medicine, Faucet (Lavatory) single-control, Faucet (Shower) single-control, fixed showerhead w/Moen® Posi-Temp®, Light shower, Lights makeup, Shower Door textured glass		S	S	S	S	S	S	
Shower Package handheld showerhead, fold-down shower seat		0	0	0	0	0	0	
<b>BEDROOM</b>								
Bed queen, innerspring mattress w/underbed storage, Bedspread, Lights decorative wall lamps, Pillows, Powerpoint 12-volt DC receptacle(s), Throw Pillow		S	S	S	S	S	S	
Bed king inner-spring mattress				0				
Bed king Sleep Number® by Select Comfort™, remote holders				0				
Bed queen Sleep Number by Select Comfort, remote holders		0	0	0	0	0	0	
<b>EXTERIOR</b>								
Awning patio, Awning Rails rain gutters, Entrance Door w/separate screen door, deadbolt lock, Door fuel-fill, Entrance Door Steps triple-electric w/doorjamb switch		S	S	S	S	S	S	

Standard - S	Optional - O	33V	35A	35L	37B	38J	38T
Ladder, Light porch, Light driver-side service, Mirrors electric, remote w/defrost, Mudflaps front & rear, Receptacle AC duplex, Sidewall Skin 1-piece smooth fiberglass, high-gloss, Storage Compartments smooth valance panels, trunk liner, gas struts, TriMark® KeyOne System, paddle latch, lights, interior master light shut-off switch		S	S	S	S	S	S
Awning patio, electric w/wind sensor & remote, Front Protective Mask w/full-body paint		0	0	0	0	0	0
<b>SYSTEMS</b>							
HEATING/AC - Automotive Heater/Air Conditioner, Home Comfort Plus Package central air heat pump, auxiliary automotive heater, insulated powered ventilator fans (bath & galley), TrueAir® Central Air Conditioning System		S	S	S	S	S	S
Furnace 35,000 BTU		S					
Furnace 40,000 BTU			S	S	S	S	S
ELECTRICAL - Auxiliary Start Circuit, Batteries (2) (Coach) Group 24 deep-cycle w/disconnect system, Converter/Charger 55-amp., electronic, Dual Battery charge control (automatic), Electrical Distribution System AC & DC breaker panels, Generator 5,500-watt, Onan® Marquis Gold™, gas, Generator/Shoreline Automatic Change-over Switch, OnePlace® Systems Center wall-mounted, battery digital voltmeter, energy management display, generator hourmeter gauge, generator start/stop switch, holding tank levels, LP tank level, solar panel/battery charger light, water heater switch & lights, water pump switch & light, water tank level, courtesy ceiling light, Power Cord 50-amp. flexible cord, PowerLine® Energy Management System, Service Center (Electrical) cable input, power cord, QuickPort® service connection hatch, telephone input, portable satellite dish hookup, Solar Panel 10-watt battery charger		S	S	S	S	S	S
Inverter DC/AC, 600-watt		0	0	0	0	0	0
PLUMBING - Drain 1" water tank, Service Compartment (Drainage/Water) city water hookup/tank diverter fill, drainage valves, 3" gray water valve, exterior wash station w/pump switch, 10' sewer hose, QuickConnect® coupling valve, QuickPort service connection hatch, Tank flushing system, black tank only, Tank holding, heated compartment, Tank LP, permanent mount w/gauge, TrueLevel™ Holding Tank Monitoring System, Water Heater 10-gallon electronic ignition, 120 VAC/LP gas w/motoraid, Water System Filtration Package housing, filter, wrench, Water System Winterization Package water heater bypass valve & siphon tube, Water Pump demand, permanent magnet motor w/diaphragm, Water Tank Fill pressurized city hookup w/diverter valve		S	S	S	S	S	S
Washer/Dryer Combination (NA on 35L with king bed)			0	0	0	0	0
<b>SAFETY</b>							
Assist Bar interior, Assist Handle exterior, acrylic, Bumpers front & rear, Detectors/ Alarms LP leak, smoke, carbon monoxide, Fire Extinguisher 10 BC, Ground Fault Interrupter, Lights high-mount brakelamps, Light courtesy w/wall switch, Lights daytime running lamps, fog, Seat Belts cab, 3-point, adjustable, Window escape, Windshield laminated safety glass		S	S	S	S	S	S
Child-Seat Tether Anchor w/BenchMark dinette		S	S	S	S		S
<b>WARRANTY*</b>							
12-month/15,000-mile basic limited warranty <sup>6</sup> 36-month/36,000-mile limited warranty on structure <sup>8</sup> 10-year limited parts & labor warranty on roof skin <sup>8</sup>		S	S	S	S	S	S

- The height of each model is measured to the top of the tallest standard feature and is based on the curb weight of a typically equipped unit. The actual height of your vehicle may vary by several inches depending on chassis or equipment variations. Please contact your dealer for further information.
- Adventurer floorplans feature a wide-body design — over 96 inches. In making your purchase decision, you should be aware that some states restrict access on some or all state roads to 96 inches in body width. Before making your purchase decision, you should confirm the road usage laws in the states of interest to you.
- The load capacity of your motor home is designated by weight, not by volume, so you cannot necessarily use all available space when loading your motor home.
- Capacities are based on measurements prior to tank installation. Slight capacity variations can result due to installation applications.
- Capacities shown are tank manufacturer's listed water capacity (W.C.). Actual filled LP capacity is 80% of listing due to overfilling prevention device on tank.

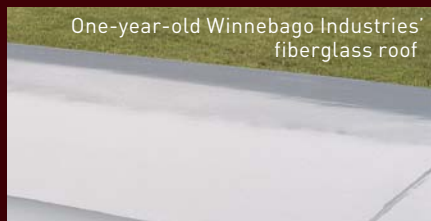
- Actual towing capacity is dependent on your particular loading and towing circumstances, which includes the GVWR, GAWR and GCWR, as well as adequate trailer brakes. Please refer to the Operator's Manual of your vehicle for further towing information.
- See separate chassis warranty.
- See your dealer for complete warranty information.
- Not all items available in combination. See dealer for details. NA - Not Available.
- Winnebago Industries'™ continuing program of product improvement makes specifications, equipment, model availability and prices subject to change without notice. Comparisons to other motor homes are based on the most recent information available.



**SUPERSTRUCTURE®** is the term given to Winnebago Industries' structural motor home design and construction. Rather than a single component, it is the culmination of design integration that incorporates steel and aluminum substructures; composite-design laminated floor risers; interlocking joint technology; and Thermo-Panel® floor, roof and sidewalls to form a high-strength, durable vehicle body.

Thermo-Panel manufacturing combines a durable exterior panel with welded aluminum support substructures. The substructures are embedded in a high-density, block-foam insulation core to create a strong, durable, yet lightweight sidewall. Just another Winnebago Industries invention.

- A** Interlocking joint construction utilizes advanced extruded aluminum structural components to create integrated floor-to-sidewall and sidewall-to-roof joints. This design effectively distributes the weight of the walls and roof, making a stronger and more durable body than competitor designs that rely on screws to carry the weight.
- B** The foundation substructure assembly is precision-aligned to maximize strength and cross-coach support as well as durability.
- C** Laminated risers feature a welded aluminum core for improved strength and provide a stable base for the floor structure and storage compartments.
- D** Critical steel components are treated using an advanced electrodeposition coating process that provides superior corrosion protection.



One-year-old Winnebago Industries' fiberglass roof



One-year-old competitor's rubber roof

**BUILT TO A HIGHER STANDARD.**

The 2007 Adventurer features a crowned, one-piece fiberglass roof skin backed with a 10-year limited parts-and-labor roof skin warranty. Fiberglass offers superior strength, attractiveness and durability compared to rubber roofs found on many competitive models. Over time, rubber roofs are susceptible to chalking, streaking and degradation, and have less puncture and tear resistance than fiberglass.



**Take a Tour** We're proud of our process, our state-of-the-art facilities and the people who make Winnebago Industries number one. We invite you to visit our factory in Forest City, Iowa, for a firsthand look at the dedication and technology behind every motor home we build.



**Recognized Quality** The Recreation Vehicle Dealer Association annually rates RV manufacturers and awards the Quality Circle award to manufacturers who provide exceptional products, service and support. Winnebago Industries is proud to be the only manufacturer to receive this award every year since its inception.



**Committed to Service** We back our motor homes with the industry's best service after the sale.

- 12-month/15,000-mile basic limited warranty
- 36-month/36,000-mile warranty on structure
- Standard 10-year limited parts-and-labor roof skin warranty
- Complimentary 24-hour roadside assistance program
- TripSaver Fast Track Parts. TripSaver guarantees that in-stock warranty parts ship directly to your dealer within 24 hours.
- National dealer service network

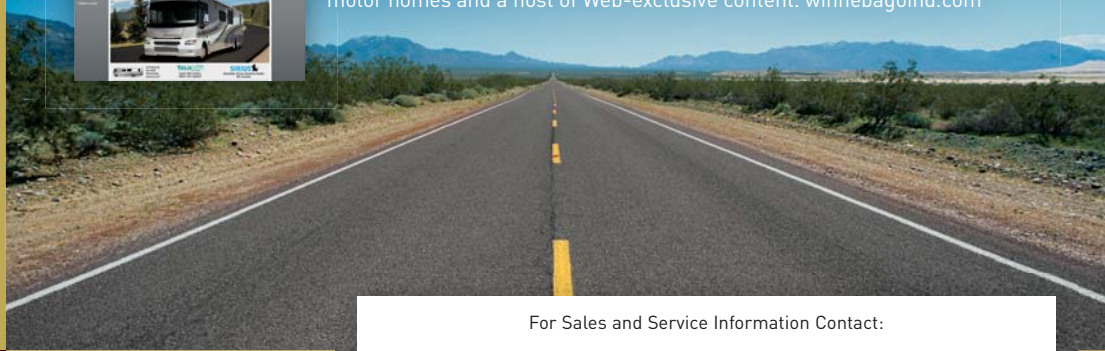


**WIT Club** Winnebago owners are like family. Joining the Winnebago-Itasca Travelers is a great way to meet and travel with other Winnebago enthusiasts. Members enjoy:

- Caravans and rallies
- Local and state group activities
- RV travel benefits



**Visit the Web** Visit us on the Web for more information on all of our motor homes and a host of Web-exclusive content. [winnebagoind.com](http://winnebagoind.com)



For Sales and Service Information Contact:

Built proudly by



NYSE listing: WGO